



The Harford County Public School System does not discriminate on the basis of race, color, sex, age, national origin, religion, sexual orientation, or disability in matters affecting employment or in providing access to programs. Inquiries related to the policies of the Board of Education should be directed to the Director of Public Information, 410 588-5203.

## Birthday Book Club



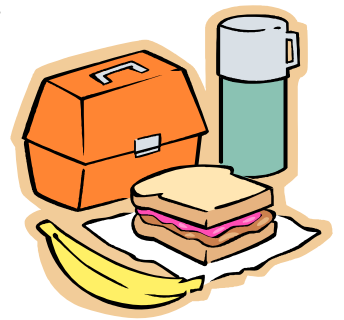
The latest additions to our Media Center were given by:

Dylan Jablon, Aubrey Jeng, Emily Messick, Colette Rosenblatt, Jonathan Roth and Sophie Rush.

Thank you for adding wonderful books to our Media Center collection! The Birthday Book Club has helped our school purchase many magnificent books. If you are interested in having your child join the Birthday Book Club, stop by the library for more information.

## Lunch Charges

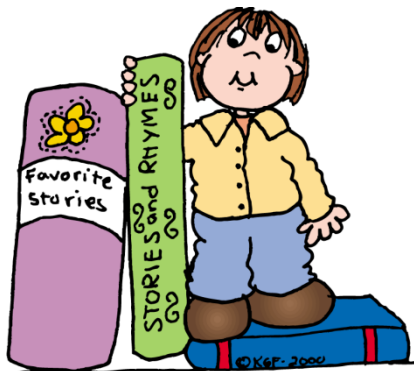
PLEASE MAKE SURE ALL LUNCH CHARGES ARE PAID PRIOR TO THE HOLIDAY BREAK. THANK YOU.



## INCLEMENT WEATHER POLICY



If schools are delayed two hours, school will start at 11:00 a.m. If elementary schools have a scheduled teacher planning early dismissal and there is a two-hour delay due to the weather, students will **NOT** be dismissed early and will remain in school for the regular school day. Weather related changes will be communicated to radio and television stations and broadcast to the public. In addition, parents will be contacted by phone through **ALERT NOW** in case of system wide or individual school schedule changes due to inclement weather or other emergency circumstances. Please be sure your phone numbers are updated in our school data base. **OPEN DOOR** parents need to be in contact with them regarding their procedures.



**Students who read 15 minutes per day (1 million words per year), scored over 80% on published standardized tests.**



## SGA MITTEN TREE/ TOY DRIVE

Thanks for all the wonderful donations! Your generous donations of hats and mittens and 180 toys helped to make the holidays special for others.

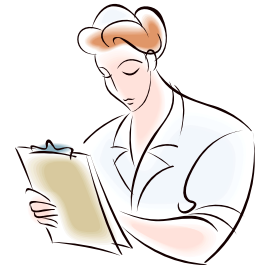


The staff of Forest Hill wishes everyone a wonderful holiday season and happy, healthy New Year. See you in 2010!

Winter Holidays School are closed  
December 24 - January 3  
Schools reopen on January 4



# Early Dismissal - December 23rd 1:00 p.m.



*TIS THE SEASON . . .*  
Some notes from Mrs. Whiteford

Kindergarten Vision/Hearing Testing will begin in January. Mrs. Whiteford is looking for parent volunteers to help with this endeavor. If you have some time available, please contact Mrs. Whiteford. Thanks to all of our parents for keeping students home when they are sick. Don't forget to practice proper hand washing with your children. This is the single most effective way to prevent the spread of germs. Have a Happy, Healthy Holiday!



## MARK YOUR CALENDARS: MSA TESTING

Please do not schedule appointments for students in grades 3-5 during MSA testing dates. Attendance is extremely important.

March 9 <sup>th</sup> Math (Grade 4)	March 12 <sup>th</sup> Reading (Grade 3)
Reading (Grade 5)	Math (Grade 5)
March 10 <sup>th</sup> Math (Grade 4)	March 16 <sup>th</sup> Math (Grade 3)
Reading (Grade 5)	Reading (Grade 4)
March 11 <sup>th</sup> Reading (Grade 3)	March 17 <sup>th</sup> Math (Grade 3)
Math (Grade 5)	Reading (Grade 4)

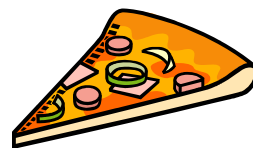
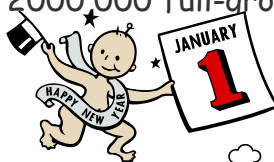
**GREAT JOB FHES!** Thank you to all the families and local businesses who sponsored or sent in donations to have another successful Bingo.



Happy Holidays from the Environmental Club! We would like to thank everyone that helped recycle at the PTA Basket Bingo. The Green Team collected 8 bags of recycling from the tables and 1 bag of trash.

We would also like to share some Holiday Recycling Trivia.

- People throw away 38,000 miles of ribbon each year - enough to tie a bow around the entire Earth!
- The energy needed to power holiday lights can cause as much pollution as 250,000 cars.
- Between November and December, we throw away an extra one million tons of trash per week. That's the same weight as 2000,000 full-grown elephants! (For more tips: visit [thedailygreen.com](http://thedailygreen.com))



### January Dates to Remember:

- January 4 School Reopens After Winter Break
- January 6 BREAKFAST PIZZA WITH PARENTS
- January 13 ENOTRIO FAMILY NIGHT 4-8 P.M.
- January 14 GEOGRAPHY BEE - 6:30 (CAFETERIA)

