



# HAVRE DE GRACE ELEMENTARY

January 2009

600 Juniata Street, Havre de Grace, MD 21078 • 410-939-6616 • 410-939-6632 fax

## WELCOME

### AT A GLANCE

**FACILITY OPENED:** 1950

**ADDITIONS/RENOVATIONS:** None

**SCHOOL CAPACITY:** 574

**TOTAL ENROLLMENT:** 393

**CLASSROOM TEACHERS:** 41

### ADMINISTRATION

**PRINCIPAL:**

Joyce Stevenson

**ASSISTANT PRINCIPAL:**

Vicki L. Elliott

**INSTRUCTIONAL FACILITATOR:**

Dorothy L. Ward



Havre de Grace Elementary School has been part of the historic Havre de Grace community for over 50 years. Many of our parents are former students. We take pride in our diversity and value our partnerships with our families and the greater Havre de Grace community. The staff is committed to providing a learning environment that ensures success for all children. A collaborative and supportive work environment provides all educators the opportunity for professional growth. We are a Title I school that offers a two-session Pre-K program, three full-day kindergarten classes, and three classes in grades one through five. In addition, we are one of two elementary schools to offer a Classroom Support Program for students throughout the county. We provide special education services in a full inclusion model with general and special education using various co-teaching models. Intervention programs include SIPPS, Launch, I Station, Success Maker, Math Recovery and Knowing Math. Students participate in Before and After School Intervention Programs. In addition, our staff includes a full-time enrichment teacher, full time reading and math specialists, a full time school mentor, a full time data specialist, a full-time school psychologist, as well as a full-time mental health counselor. Our students enjoy special classes in art, media, physical education, and choral music. Fourth and fifth grade students may also participate in chorus, band, and orchestra. We also have a student and a teacher steel drum performing group. We have a fully equipped T.V studio that is run by students in grades 4 and 5. There is a fully equipped computer lab and a Ben Carson Reading Room for students and parents. Havre de Grace Elementary School is a community school where teachers care deeply for their students, their school families, and for one another.

Our decisions are student centered as each day is designed to provide a learning environment that is based on state standards, that is differentiated to engage learners, and that guarantees success for all and fulfills our mission to "Believe, Receive, and Achieve!"

*Joyce Stevenson*  
Principal



# Student Population Characteristics

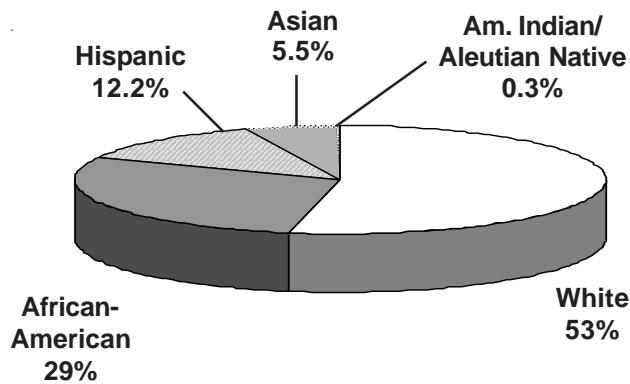
Student Enrollment	2005	2006	2007	2008	2009
Grade					
Pre-School	0	0	0	0	0
Pre-K	39	40	40	32	36
Kindergarten	62	58	45	58	53
1	70	54	51	51	54
2	60	61	47	63	72
3	71	54	53	54	53
4	77	68	63	54	61
5	82	78	69	61	64

Students Absent				
< 5 days	29.5%	21%	35.3%	35.3%
> 20 days	10.2%	11.3%	7.6%	7.6%
Student Mobility				
Entrants	16.2%	14.5%	13.9%	17.3%
Withdrawals	11.5%	24.3%	15.8%	13.3%

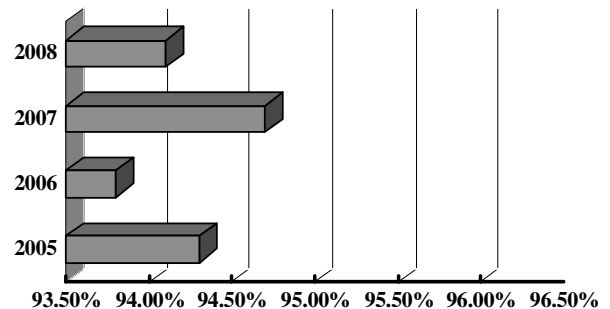
Students Receiving Special Services	2006 %	2007 %	2008 %
Free/Reduced Price Meals	60.5	60.1	57.7
Limited English Proficient	5.5	4.8	6.9
Special Education	17.5	13.9	15.1

\*\*Reflects students enrolled in "ungraded special education"

## Student Membership by Ethnicity (2008)

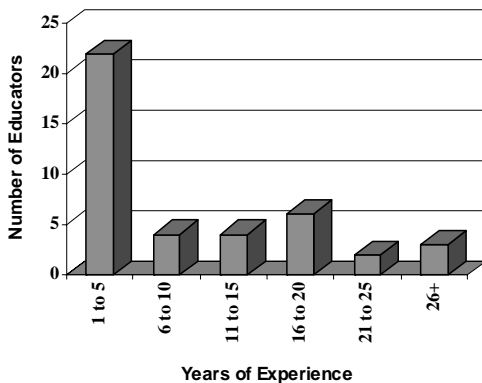


## Student Attendance

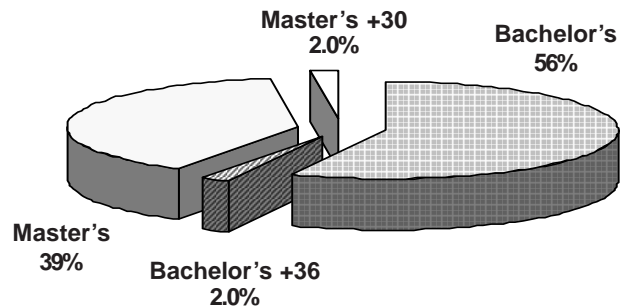


# School Staff Characteristics

## Professional Staff Experience

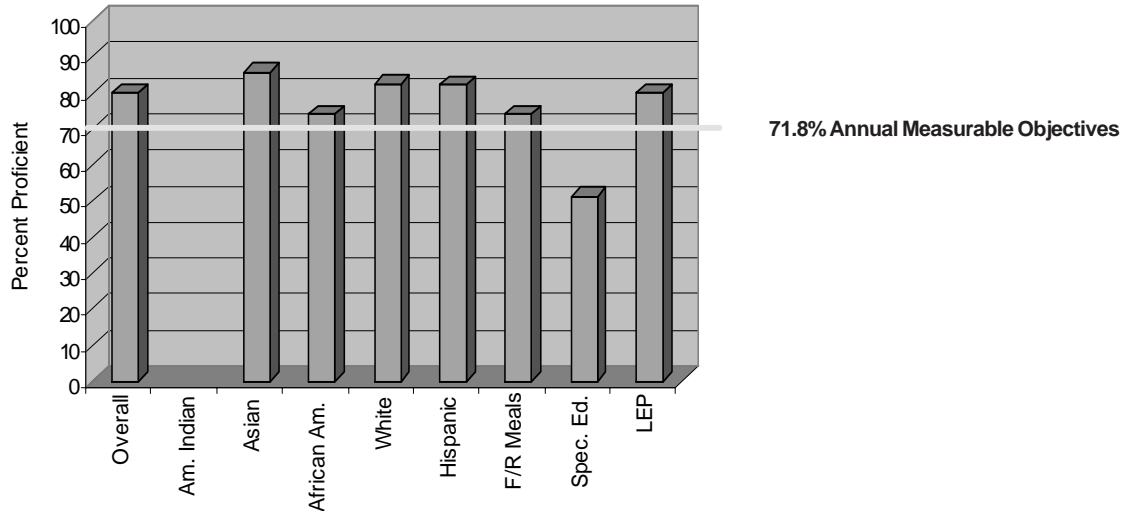


## Education of Professional Staff

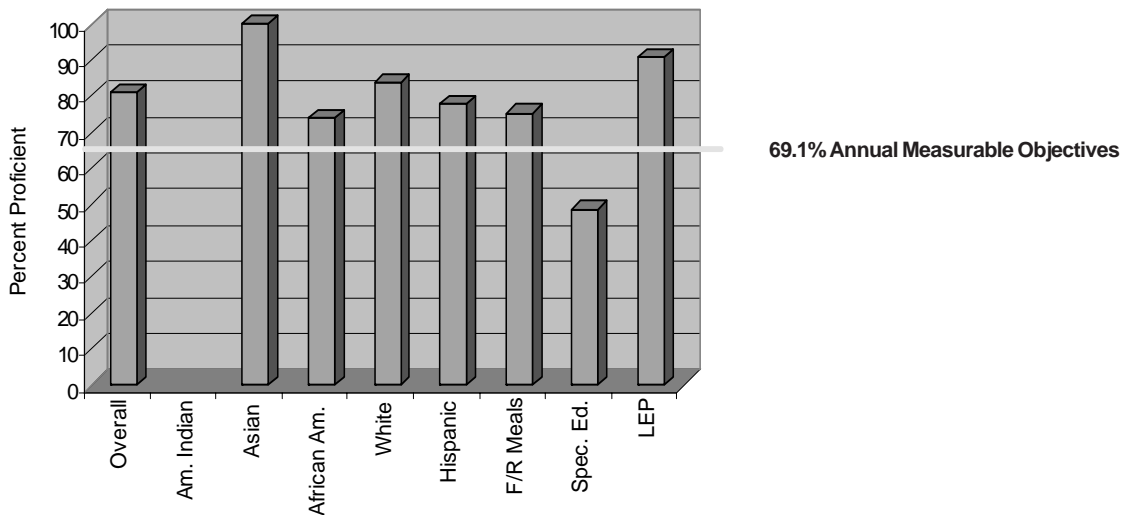


## MSA Results: 2008

### Reading: Grades 3, 4, and 5 Weighted Average



### Mathematics: Grades 3, 4, and 5 Weighted Average



*The graphs above show the percent of eligible third, fourth, and fifth grade students who performed at the proficient level on the Maryland State Assessment Reading and Mathematics tests. If a category is empty, there were too few students to monitor. For more information, go to [www.msde.state.md.us](http://www.msde.state.md.us), and click on 2008 Performance Report.*