



ABERDEEN HIGH

January 2009

251 Paradise Road, Aberdeen, MD 21001 • 410-273-5500 • 410-273-5587 fax

AT A GLANCE

FACILITY OPENED: 1952

ADDITIONS/RENOVATIONS: 2004, 2008

SCHOOL CAPACITY: 1,370

TOTAL ENROLLMENT: 1,504

CLASSROOM TEACHERS: 109

ADMINISTRATION

PRINCIPAL:

Thomas M. Szerensits

ASSISTANT PRINCIPALS:

Valerie L. Cooper

Carlton G. Ford

Edward Stevens

INSTRUCTIONAL FACILITATOR:

Mary A. Boswell McComas



WELCOME

Aberdeen High School's philosophy of education recognizes and responds to our community of diverse learners with consideration to the demands of an increasingly complex and constantly changing technological society. The beliefs and daily operations of the school hinge upon the necessity of life-long learning in a spirit of cooperation among students, community, and academic leaders.

Although housed in a new and modern facility, AHS has a long and distinguished history of excellence. The AHS Hall of Fame situated along the Hall of Fame Boulevard is a lasting illustration of that excellence. The School of Math, Science, and Technology recognizes and responds to our diverse students with consideration to the demands of an increasingly complex and constantly changing technology society. The School of Humanities, Performing and Visual Arts recognizes that our students possess their unique qualities of creative expression.

Additionally, the Science and Mathematics Academy magnet school is located in Aberdeen High School, and provides unique opportunities for students in terms of its program and its access to technology. Students are invited to join the Science and Mathematics Academy based on an application process conducted during the winter of each year.

The school year is divided into two semesters of 18 weeks each. Students take courses within a rotating AB-block schedule.

Thomas M. Szerensits
Principal



Student Population Characteristics

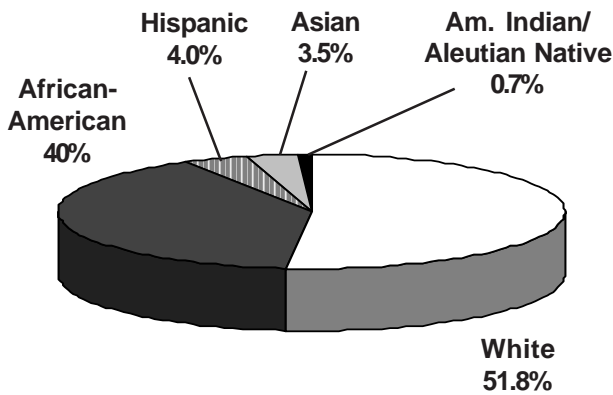
Student Enrollment	2005	2006	2007	2008	2009
Grade					
9	485	526	482	463	431
10	337	418	444	402	379
11	277	312	357	361	349
12	259	287	306	343	345

Students Absent	2005	2006	2007	2008
< 5 days	20%	17.6%	26.1%	26.1%
> 20 days	30.7	33.9%	25.3%	25.3%
Student Mobility	2005	2006	2007	2008
Entrants	13.8%	12.6%	10.5%	9.6%
Withdrawals	20.2%	16.7%	17.7%	15.8%

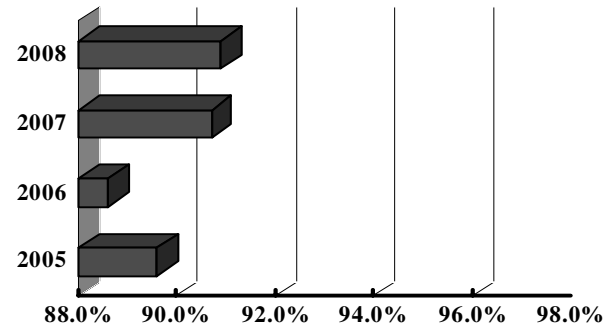
Students Receiving Special Services	2006 %	2007 %	2008 %
Free/Reduced Price Meals	29.2	28.2	28.6
Limited English Proficient	0.5	*	0
Special Education	12.9	12.9	13.6

* Fewer than 5 students

Student Membership by Ethnicity (2008)

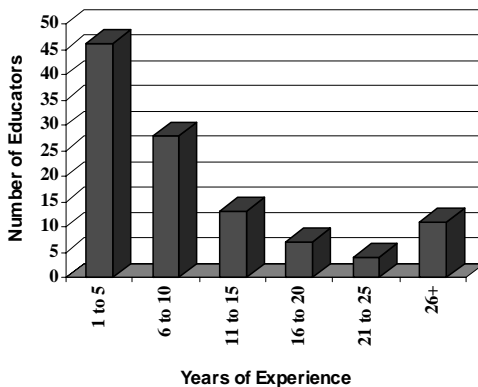


Student Attendance

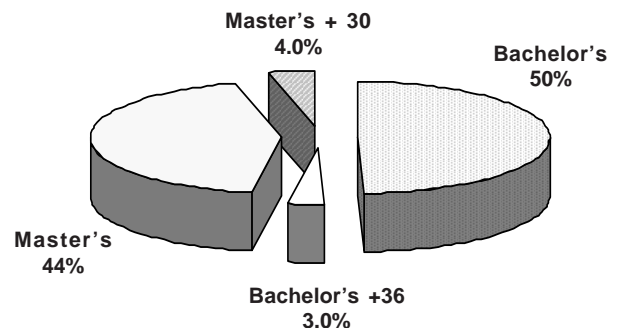


School Staff Characteristics

Professional Staff Experience



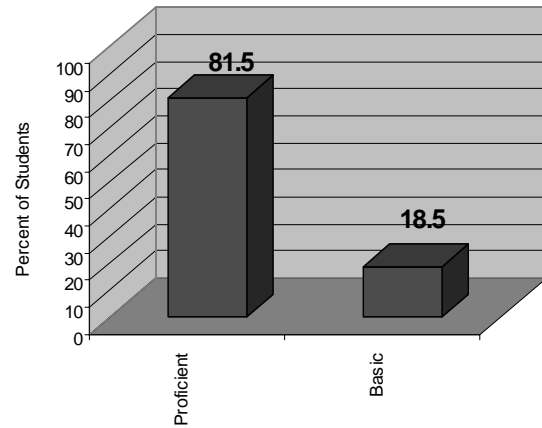
Education of Professional Staff



Post-Secondary Plans/Intentions (Class of 2008)

Plans/Intentions	#	%
Employment	16	5.7
Technical/Specialized School	15	5.3
2 year college	43	15.1
4 year college	109	38.2
Military	11	3.9
Other and no response <i>Includes those entering an apprenticeship program</i>	91	31.9

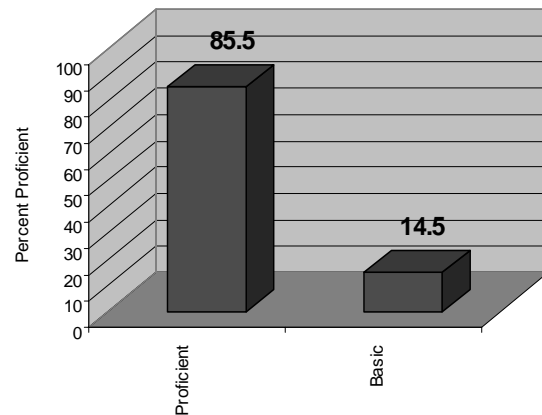
2008 English 2: Proficiency Levels



Grade Point Averages: 200867

	Number of Students	Average GPA
Grade 9	463	2.06
Grade 10	402	2.27
Grade 11	361	2.54
Grade 12	343	2.53
TOTAL Average GPA: 2.32		

2008 Algebra: Proficiency Levels



2008 High School Assessment Test Participation and Status Grade 10 All Subjects*

Test	Passing Score	% Passing
Algebra	412	67.0
English II	400	54.2
Government	396	74.4
Biology	394	62.7

*Data is as of the current school year

Average SAT Scores

	2008 Writing	2008 Math	2008 Verbal	2008 TOTAL	2007 TOTAL
Aberdeen	469	489	480	1438	1378
Harford County	490	521	505	1516	1507
State	497	502	499	1498	1498
National	494	515	502	1511	1511