



HARFORD TECHNICAL HIGH

January 2009

200 Thomas Run Road, Bel Air, MD 21015 • 410-638-3804 • 410-638-3820 fax

AT A GLANCE

FACILITY OPENED: 1978

ADDITIONS/RENOVATIONS: 1995,
1999, 2008

SCHOOL CAPACITY: 920

TOTAL ENROLLMENT: 1,040

CLASSROOM TEACHERS: 84

ADMINISTRATION

PRINCIPAL:

Charles G. Hagan

ASSISTANT PRINCIPALS:

Lari M. Dunlap, Sr.

Wanita Fleury

INSTRUCTIONAL FACILITATOR:

Michael J. Thatcher



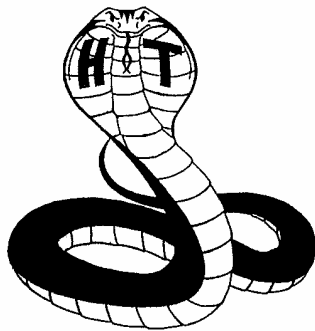
WELCOME

As Harford County's singular school for academic studies and career/technical education, Harford Technical High School serves a population of students from throughout the county. Students in grades nine through 12 are offered opportunities to prepare for college, further post-secondary technical education, and/or enter into the work force or U.S. military. Harford Technical High provides state-of-the-art facilities, with a rigorous curriculum offered by staff who create a challenging learning environment for all students. Faculty and staff strive to integrate academic and technical fields so that all studies are meaningful and rewarding for all students.

Students at Harford Technical High School may elect to study in technical fields that will prepare them for direct entry into the work force, or as preparation for post-secondary education in college or in a specific technical school. Several programs at Harford Technical High are articulated with Harford Community College and the Community College of Baltimore County through the Tech Prep Program, which allows students to earn college credit for coursework completed in high school. Businesses and industry in the Harford County area have formed strong partnerships with Harford Technical High, providing valuable assistance with expertise, guest speakers, donations of money and materials, and employment opportunities for students. These partnerships maintain a vital link between the school and the surrounding business community, allowing students to realize success both in school, at work, and in volunteer projects.

Beyond the classrooms and labs, Harford Technical High offers its students a full range of extracurricular and athletic activities in which they may participate. Students at Harford Tech are active in organizations based at the school, as well as in national organizations that teach leadership, technical mastery, and career skills. We welcome inquiries and questions from the community about our school, and we are proud to point out the authentic, "live" work that our students do on a daily basis.

Charles G. Hagan
Principal



Student Population Characteristics

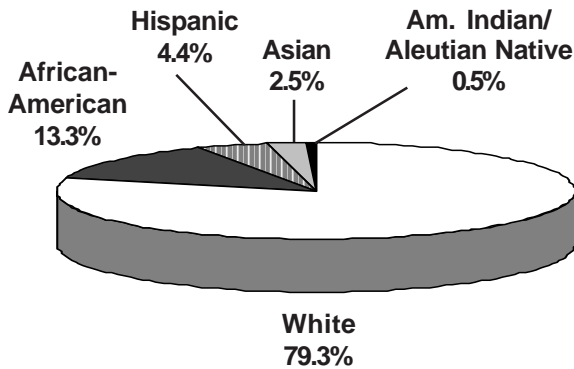
Student Enrollment	2005	2006	2007	2008	2009
Grade					
9	289	281	275	280	288
10	243	274	274	256	264
11	268	243	268	259	242
12	269	254	239	261	246

Students Absent	2005	2006	2007	2008
< 5 days	35%	31%	38.9%	38.9%
> 20 days	10.7%	12%	7.5%	7.5%
Student Mobility				
Entrants	1.4%	1.6%	2.9%	0.7%
Withdrawals	3.8%	3.6%	4.4%	3.2%

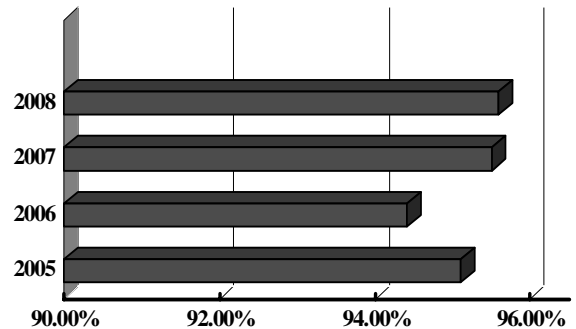
Students Receiving Special Services	2006 %	2007 %	2008 %
Free/Reduced Price Meals	13.9	12	11.5
Limited English Proficient	2.7	3.4	4.9
Special Education	13.1	13.1	12

* Fewer than 5 students

Student Membership by Ethnicity (2008)

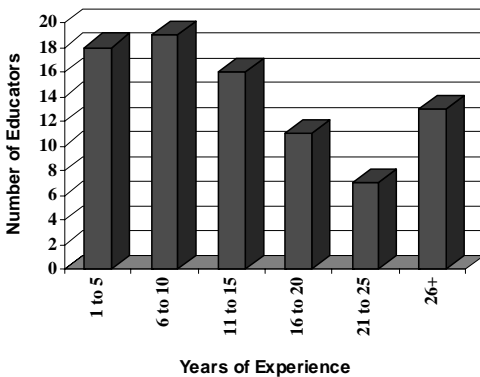


Student Attendance

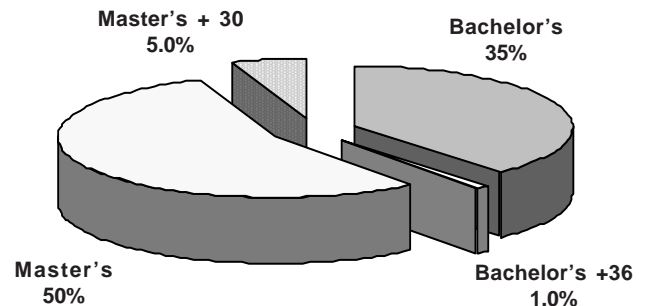


School Staff Characteristics

Professional Staff Experience



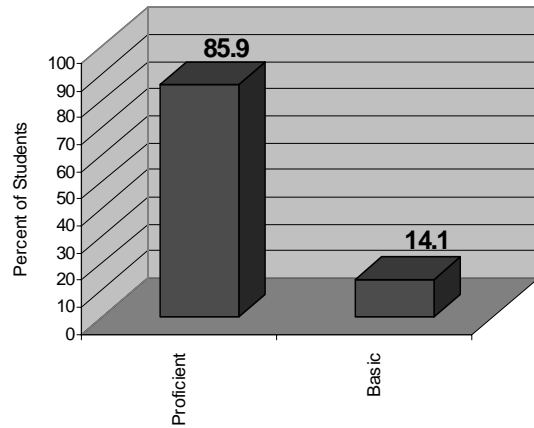
Education of Professional Staff



Post-Secondary Plans/Intentions (Class of 2008)

Plans/Intentions	#	%
Employment	40	15.6
Technical/Specialized School	7	2.7
2 year college	52	20.2
4 year college	70	27.2
Military	6	2.3
Other and no response <i>Includes those entering an apprenticeship program</i>	82	31.9

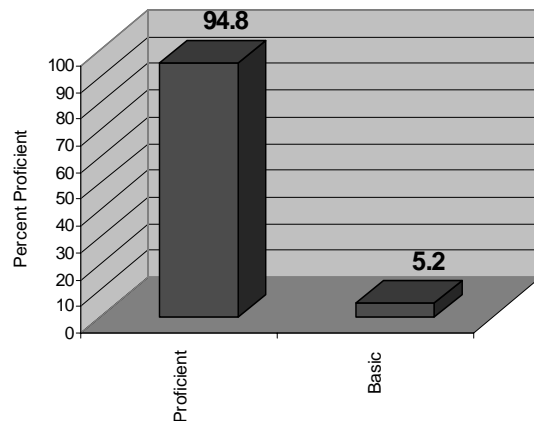
2008 English 2: Proficiency Levels



Grade Point Averages: 2008

	Number of Students	Average GPA
Grade 9	280	2.83
Grade 10	256	2.77
Grade 11	259	2.78
Grade 12	261	2.82
TOTAL Average GPA: 2.80		

2008 Algebra: Proficiency Levels



2008 High School Assessment Test Participation and Status Grade 10 All Subjects*

Test	Passing Score	% Passing
Algebra	412	94.8
English II	400	75.0
Government	396	96.8
Biology	394	93.3

*Data is as of the current school year

Average SAT Scores

	2008 Writing	2008 Math	2008 Verbal	2008 TOTAL	2007 TOTAL
Harford Tech	469	513	491	1473	1374
Harford County	490	521	505	1516	1507
State	497	502	499	1498	1498
National	494	515	502	1511	1511