



# CHURCHVILLE ELEMENTARY

January 2009

2935 Level Road, Churchville, MD 21028 • 410-638-3800 • 410-638-3834 fax

## AT A GLANCE

**FACILITY OPENED:** 1931

**ADDITIONS/RENOVATIONS:** 1953,  
1962, 1968, 1998

**SCHOOL CAPACITY:** 388

**TOTAL ENROLLMENT:** 363

**CLASSROOM TEACHERS:** 32

## ADMINISTRATION

### PRINCIPAL:

Thomas M. Smith

### ASSISTANT PRINCIPAL:

Tara DeDeaux

### INSTRUCTIONAL FACILITATOR:

Margaret "Peggy" Konopka

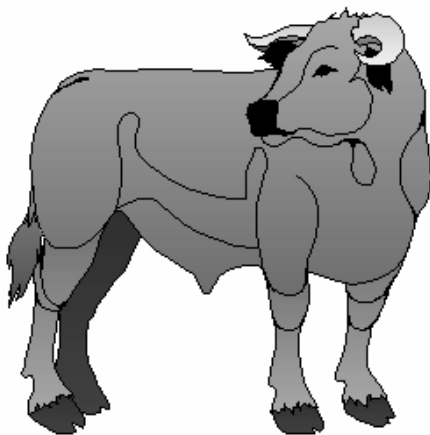


## WELCOME

Churchville Elementary School is centrally located in beautiful Harford County. While only five minutes from I-95, it is surrounded by farmland and a wide variety of single family dwellings. Originally built in the early 1930's, several additions and renovations have allowed the school to maintain its original charm and yet also to have updated technology, air conditioning, and other physical improvements. Tradition and basic values are extremely important to this community. Students benefit from an extensive volunteer program, highly active PTA, and a broad base of business and community partnerships.

Student achievement is the highest priority at Churchville Elementary. Focus areas in our school improvement plan include providing students with high quality instruction, using the observation and evaluation process to support quality instructional practices, and continuing to provide a safe, nurturing learning environment for students. Many different teams share responsibility for monitoring student progress and improving learning resources. Our mission statement begins with "dedication to educational excellence." We strive to meet this expectation every day, welcoming one and all to join us in this journey.

*Thomas M. Smith*  
Principal



# Student Population Characteristics

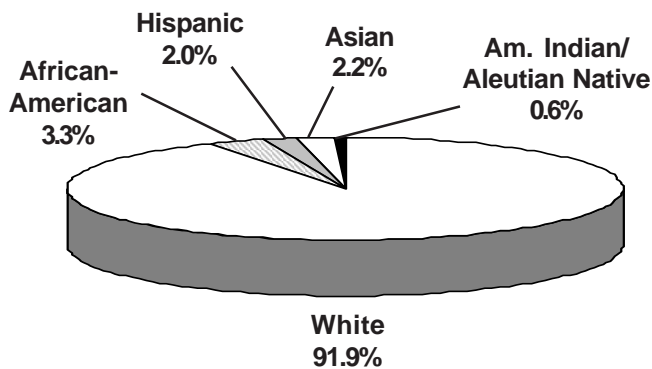
Student Enrollment	2005	2006	2007	2008	2009
Grade					
Pre-School	0	0	0	0	0
Pre-K	NA	NA	NA	NA	0
Kindergarten	53	62	61	64	61
1	55	58	59	56	65
2	61	56	58	59	56
3	78	58	60	57	63
4	67	75	64	60	58
5	69	74	69	63	60

Students Absent		2005	2006	2007	2008
< 5 days		40.9%	27.9%	42.1%	42.1%
> 20 days		3.0%	5.0%	2.0%	2.0%
Student Mobility		2005	2006	2007	2008
Entrants		5.0%	6.7%	6.0%	4.4%
Withdrawals		3.8%	3.6%	3.9%	6.6%

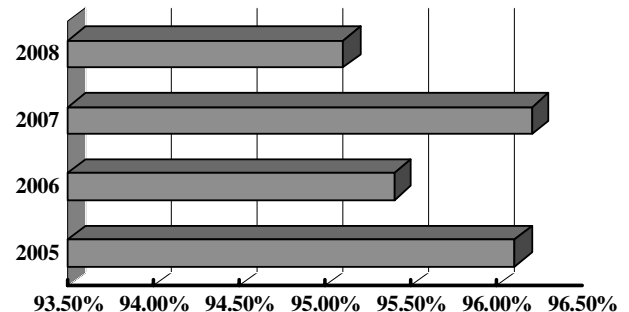
Students Receiving Special Services	2006 %	2007 %	2008 %
Free/Reduced Price Meals	13.6	11	14
Limited English Proficient	*	*	*
Special Education	14.1	11	15.3

\*Fewer than 5 students

## Student Membership by Ethnicity (2008)

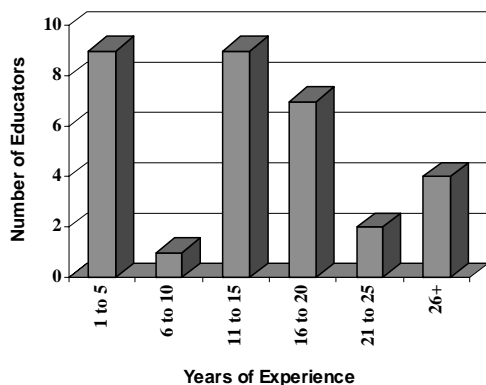


## Student Attendance

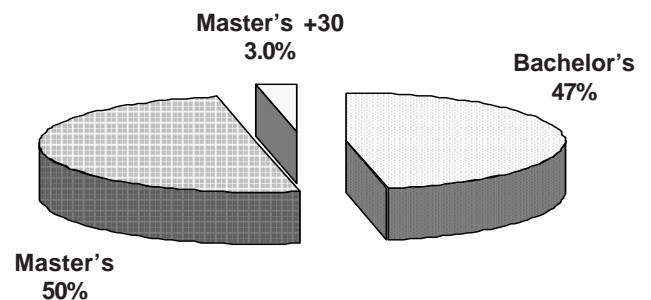


# School Staff Characteristics

## Professional Staff Experience

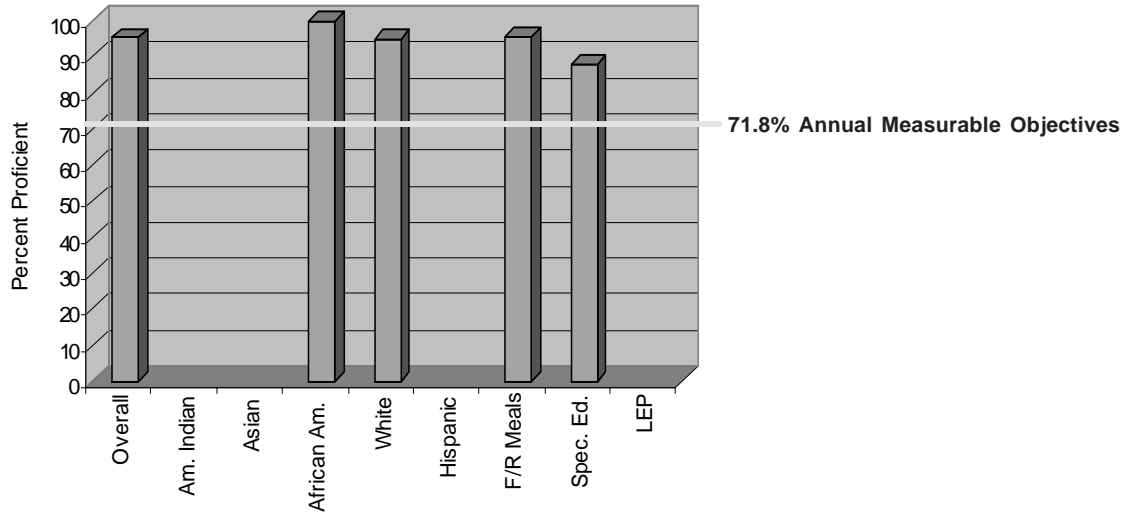


## Education of Professional Staff

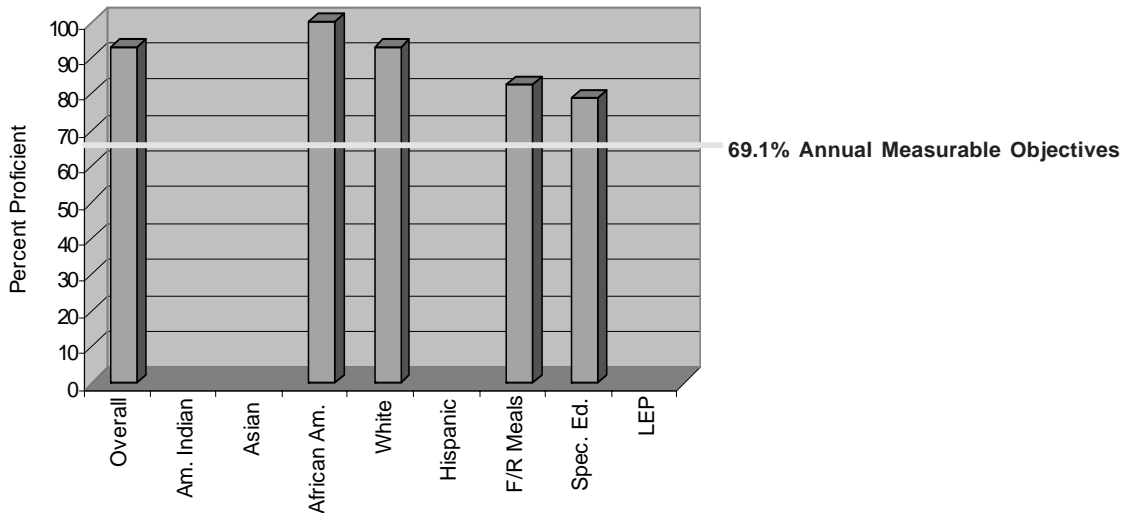


## MSA Results: 2008

### Reading: Grades 3, 4, and 5 Weighted Average



### Mathematics: Grades 3, 4, and 5 Weighted Average



*The graphs above show the percent of eligible third, fourth, and fifth grade students who performed at the proficient level on the Maryland State Assessment Reading and Mathematics tests. If a category is empty, there were too few students to monitor. For more information, go to [www.msde.state.md.us](http://www.msde.state.md.us), and click on 2008 Performance Report.*