



DARLINGTON ELEMENTARY

January 2009

2119 Shuresville Rd., Darlington, MD 21034 • 410-638-3700 • 410-638-3701 fax

AT A GLANCE

FACILITY OPENED: 1938

ADDITIONS/RENOVATIONS: 1966, 1995

SCHOOL CAPACITY: 192

TOTAL ENROLLMENT: 125

CLASSROOM TEACHERS: 18

ADMINISTRATION

PRINCIPAL:

Brenda R. Taylor

ASSISTANT PRINCIPAL: None

INSTRUCTIONAL FACILITATOR:

Alberta Porter



WELCOME

Darlington Elementary is located on the northeastern fringe of Harford County, situated in a rural community by the Susquehanna River. The school has approximately 130 students from K-5 and two primary autistic classes. Our staff, parents, and grandparents provide a supportive, challenging, and enjoyable school environment for all. Our highly accomplished staff combined with children who are ready to learn, an active PTA, and a strong volunteer program result in quality learning opportunities for every child.

DES offers reading intervention, a school-wide enrichment program, and special education services to meet the needs of all children. We achieved great gains in mathematics and reading, achieving the highest status in the county on the 2006 Maryland School Assessment. Central to our school's success is our staff and community's commitment to teaching and learning. The staff has developed a school improvement plan that emphasizes students' achievement. Ongoing development assists the staff in reaching these goals. There is a passion for learning and teaching at Darlington. We are truly proud of our warm and welcoming atmosphere where adults and children truly care about each other and have fun while learning. We live by our school motto "Preserving our heritage and enriching our future."

Brenda R. Taylor
Principal



Student Population Characteristics

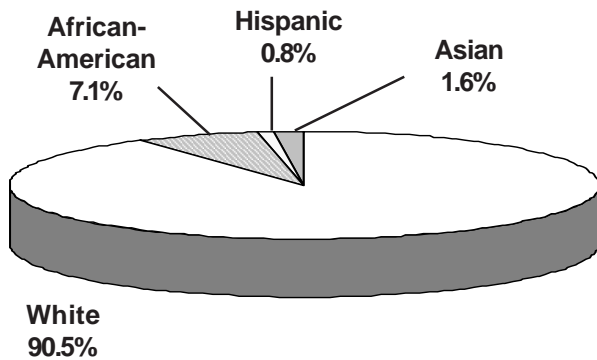
Student Enrollment	2005	2006	2007	2008	2009
Grade					
Pre-School	1	0	0	0	0
Pre-K	3	3	1	0	0
Kindergarten	19	21	29	20	20
1	25	20	16	31	18
2	18	25	22	17	26
3	22	18	20	19	16
4	26	27	16	22	19
5	23	25	26	17	26

Students Absent				
< 5 days	27.7%	30.2%	45.1%	45.1%
> 20 days	7.6%	3.4%	5.9%	5.9%
Student Mobility				
Entrants	8.9%	10.3%	5.1%	11.3%
Withdrawals	11.1%	5.9%	4.4%	4.5%

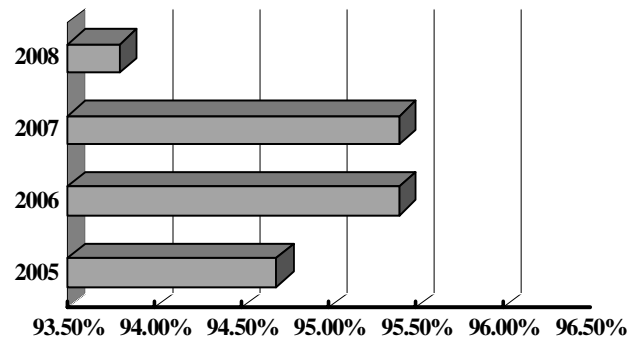
Students Receiving Special Services	2006 %	2007 %	2008 %
Free/Reduced Price Meals	25	24.5	30.5
Limited English Proficient	0	0	*
Special Education	20.3	17.3	19.1

* Fewer than 5 students

Student Membership by Ethnicity (2008)

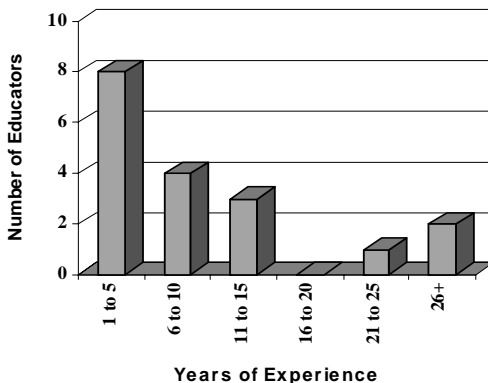


Student Attendance

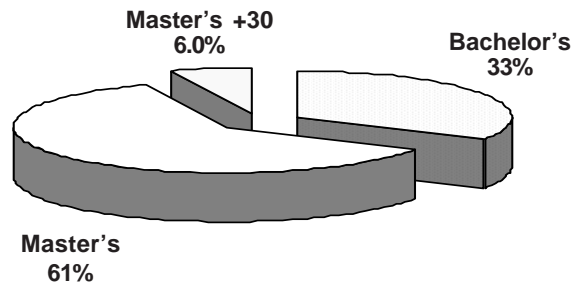


School Staff Characteristics

Professional Staff Experience

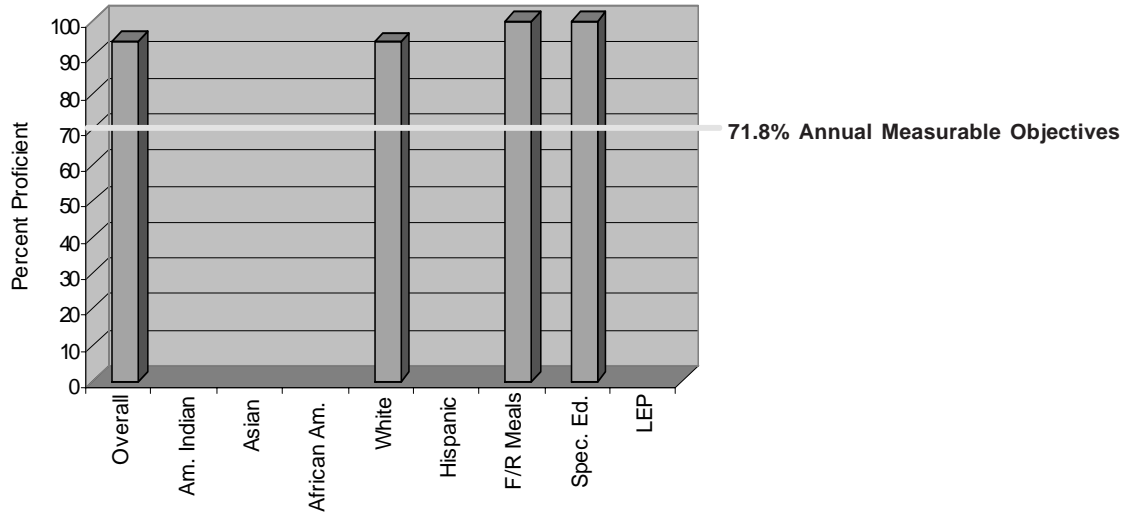


Education of Professional Staff

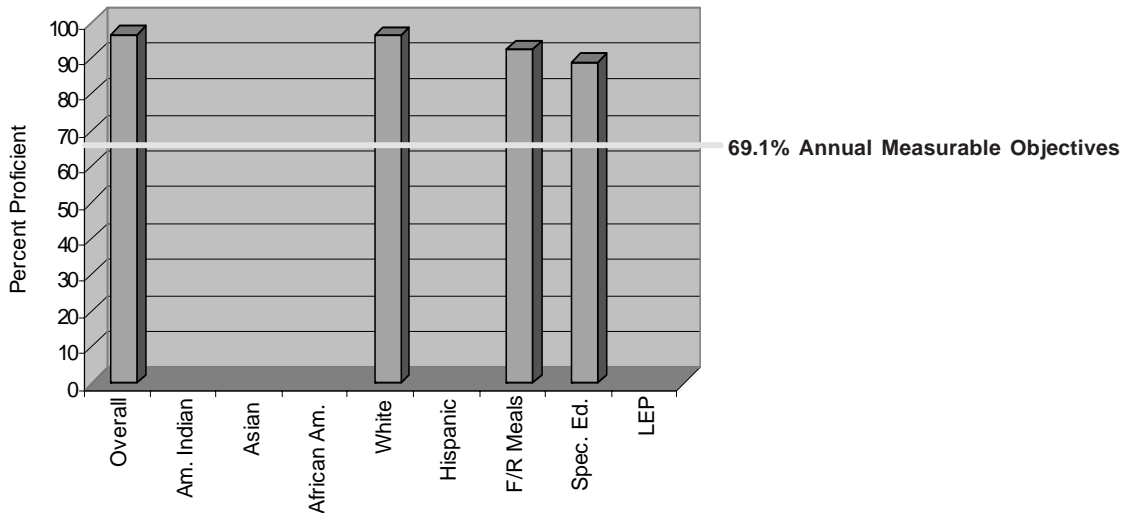


MSA Results: 2008

Reading: Grades 3, 4, and 5 Weighted Average



Mathematics: Grades 3, 4, and 5 Weighted Average



The graphs above show the percent of eligible third, fourth, and fifth grade students who performed at the proficient level on the Maryland State Assessment Reading and Mathematics tests. If a category is empty, there were too few students to monitor. For more information, go to www.msde.state.md.us, and click on 2008 Performance Report.