



# EDGEWOOD ELEMENTARY

January 2009

2100 Cedar Drive, Edgewood, MD 21040 • 410-612-1540 • 410-612-2013 fax

## WELCOME

### AT A GLANCE

**FACILITY OPENED:** 1969

**ADDITIONS/RENOVATIONS:** 2000

**SCHOOL CAPACITY:** 511

**TOTAL ENROLLMENT:** 393

**CLASSROOM TEACHERS:** 41

### ADMINISTRATION

**PRINCIPAL:**

Lisa B. Sundquist

**ASSISTANT PRINCIPAL:**

Gregory J. Lane

**INSTRUCTIONAL FACILITATOR:**

Jennifer Drumgoole



The highly qualified staff at Edgewood Elementary School is dedicated to providing each student with a meaningful and rigorous educational program. Our school's mission is "Empowering All to Achieve!" Therefore, it is the mission of all staff to provide a safe and nurturing learning environment that supports excellence and life long learning for all students. Teaching teams use classroom performance and assessment results to design an appropriate program for each child. Programs to support continued student achievement include full-day Kindergarten, Preindergarten, and an Early Intervention class. Intervention programs include SIPPS (Systematic Instruction in Phoneme Awareness, Phonics, and Sight Words), LAUNCH (Language Arts Understanding to Nurture Children's Literacy Attainments), Wilson Reading Systems, Math Masters, and GT (Gifted and Talented)

The Family Liaison Program involves parents in the educational progress of their children. Monthly activities are provided to allow students and parents to work together and to assist parents in supporting their children at home. GT allows a half-time enrichment resource teacher to provide options for developing the talents of our diverse student body. Math Masters during the school day uses manipulative rich lessons to supplement outcomes through the development of problem-solving strategies for at-risk students. Additionally, after school programs focus on developing math understandings and solid mathematical foundation and reading competencies. A ten-year partnership with the United States Army Environmental Command (USAEC) has benefited all students as they work with Army mentors to learn about environmental issues, career goals, and citizenship.

The faculty and staff at Edgewood believe that all students are individuals with diverse needs and talents. When provided with a variety of learning opportunities, students will strive to meet high standards. Our vision is to foster respect and self esteem within our school community and promote successful learning for all students. We invite you to join us as we partner with parents, families, and the community to empower all to achieve!

*Lisa B. Sundquist*  
Principal



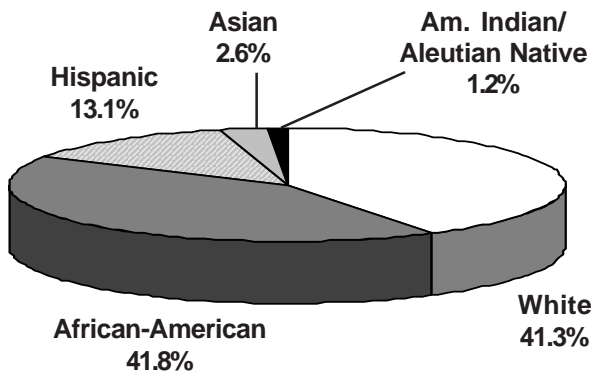
# Student Population Characteristics

| Student Enrollment | 2005 | 2006 | 2007 | 2008 | 2009 |
|--------------------|------|------|------|------|------|
| Grade              |      |      |      |      |      |
| Pre-School         | 18   | 7    | 10   | 10   | 8    |
| Pre-K              | 79   | 70   | 69   | 72   | 77   |
| Kindergarten       | 81   | 68   | 64   | 62   | 44   |
| 1                  | 70   | 84   | 61   | 59   | 59   |
| 2                  | 56   | 66   | 63   | 60   | 60   |
| 3                  | 64   | 49   | 52   | 57   | 51   |
| 4                  | 71   | 63   | 50   | 48   | 51   |
| 5                  | 74   | 66   | 53   | 51   | 43   |

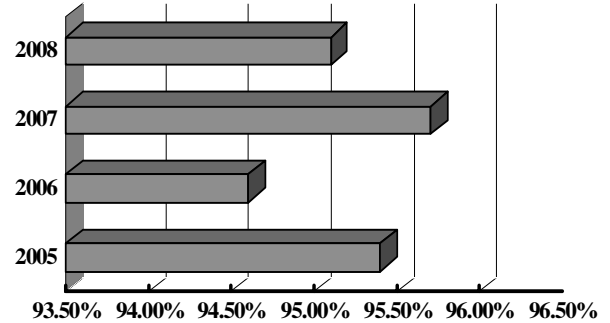
| Students Absent  |  | 2005  | 2006  | 2007  | 2008  |
|------------------|--|-------|-------|-------|-------|
| < 5 days         |  | 34.7% | 25.8% | 40.6% | 40.6% |
| > 20 days        |  | 4.7%  | 8.1%  | 5.8%  | 5.8%  |
| Student Mobility |  | 2005  | 2006  | 2007  | 2008  |
| Entrants         |  | 28.8% | 18.4% | 20.8% | 23%   |
| Withdrawals      |  | 20.8% | 20.5% | 21.8% | 24.5% |

| Students Receiving Special Services | 2006 % | 2007 % | 2008 % |
|-------------------------------------|--------|--------|--------|
| Free/Reduced Price Meals            | 54.4   | 48     | 56.3   |
| Limited English Proficient          | 3.4    | 4.5    | 9.3    |
| Special Education                   | 23.9   | 18.5   | 24.6   |

Student Membership by Ethnicity (2008)

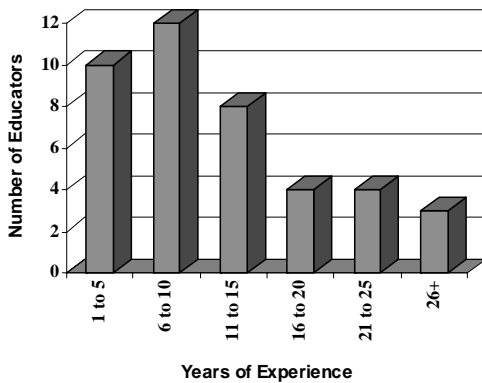


Student Attendance

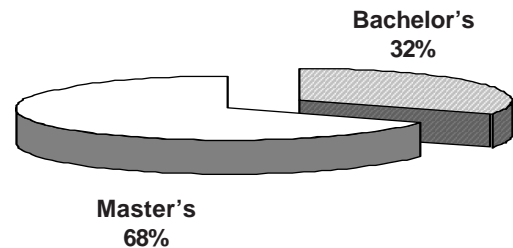


# School Staff Characteristics

Professional Staff Experience

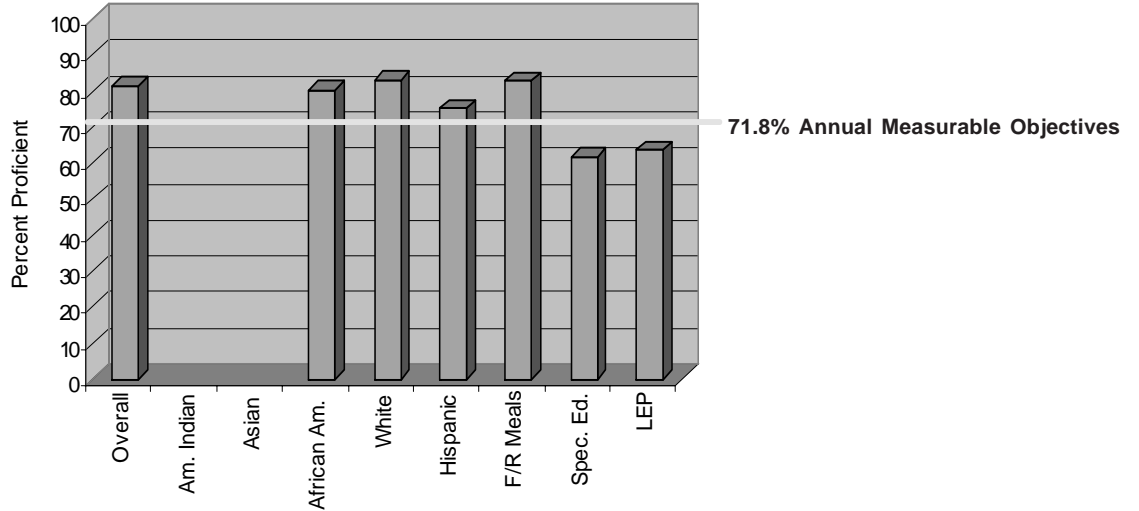


Education of Professional Staff

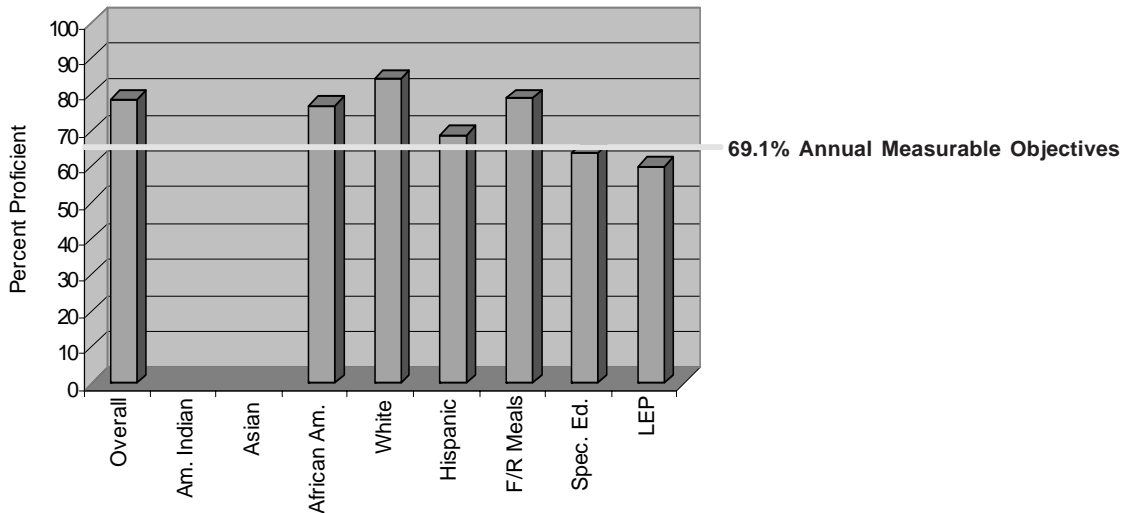


## MSA Results: 2008

### Reading: Grades 3, 4, and 5 Weighted Average



### Mathematics: Grades 3, 4, and 5 Weighted Average



*The graphs above show the percent of eligible third, fourth, and fifth grade students who performed at the proficient level on the Maryland State Assessment Reading and Mathematics tests. If a category is empty, there were too few students to monitor. For more information, go to [www.msde.state.md.us](http://www.msde.state.md.us), and click on 2008 Performance Report.*