



FOUNTAIN GREEN ELEMENTARY

January 2009

517 Fountain Green Rd., Bel Air, MD 21015 • 410-638-4220 • 410-638-4347 fax

WELCOME

AT A GLANCE

FACILITY OPENED: 1993

ADDITIONS/RENOVATIONS: None

SCHOOL CAPACITY: 571

TOTAL ENROLLMENT: 651

CLASSROOM TEACHERS: 51

ADMINISTRATION

PRINCIPAL:

Stacey L. Gerringer

ASSISTANT PRINCIPAL:

Kathy Garafola

INSTRUCTIONAL FACILITATOR:

Margaret Konopka



Fountain Green Elementary School is situated on 30 acres in a community on the eastern fringes of Bel Air in Harford County. Since its opening in 1993, Fountain Green Elementary has grown to become a hub for academic, social, and recreational activity for its students and their families.

The faculty and staff enjoy strong partnerships with families, the Parent-Teacher Association, and local businesses. Working together, they help to provide an atmosphere in which high academic achievement is both encouraged and celebrated. In addition to a curriculum based on rigorous standards, many other programs are supported annually to address the needs, interests, and learning styles of our students. Staff and volunteers engage in planning many curriculum related and extra-curricular initiatives including the Patriot Program, Reflections Program, Destination Imagination, Art Show, Band and String Concerts, and numerous cultural arts events.

Our School Improvement Team monitors the academic performance of our students and on an on-going basis makes recommendations related to instruction, character education, and technology.

The entire Fountain Green family – students, staff, and parents are committed to ensuring a high level of achievement for our students. We are true to our motto, “Soaring Higher than the Rest!”

Stacey L. Gerringer
Principal



Student Population Characteristics

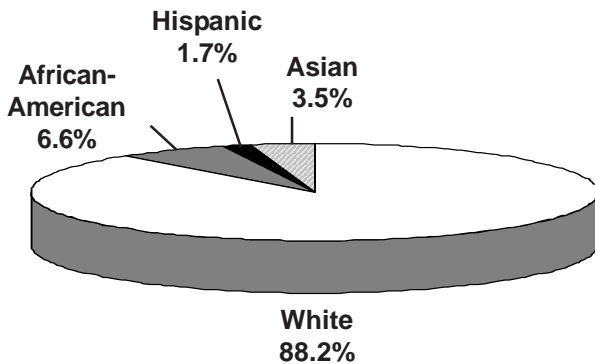
Student Enrollment	2005	2006	2007	2008	2009
Grade					
Pre-School	0	0	0	0	0
Pre-K	NA	NA	NA	NA	NA
Kindergarten	91	107	95	104	96
1	117	105	108	98	105
2	113	115	109	117	97
3	94	116	115	108	118
4	118	103	115	121	110
5	83	118	101	114	125

Students Absent				
< 5 days	37.4%	31.6%	48.7%	48.7%
> 20 days	3.2%	3.4%	1.6%	1.6%
Student Mobility				
Entrants	4.2%	3.4%	4.1%	3.4%
Withdrawals	4.3%	3.1%	4.4%	2.2%

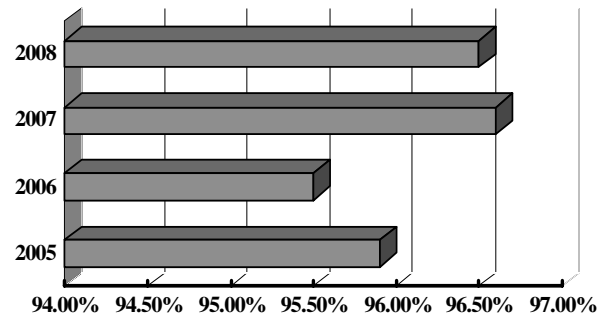
Students Receiving Special Services	2006 %	2007 %	2008 %
Free/Reduced Price Meals	5.0	4.9	8.2
Limited English Proficient	*	0.8	*
Special Education	13.3	11.6	8.5

* Fewer than 5 students

Student Membership by Ethnicity (2008)

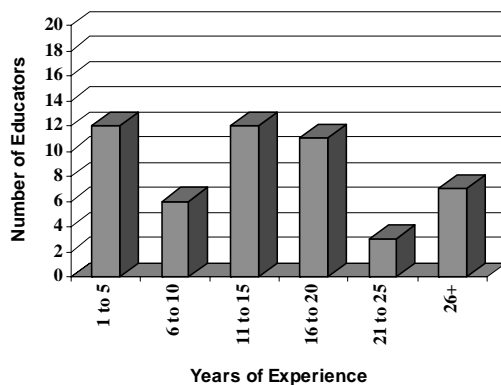


Student Attendance

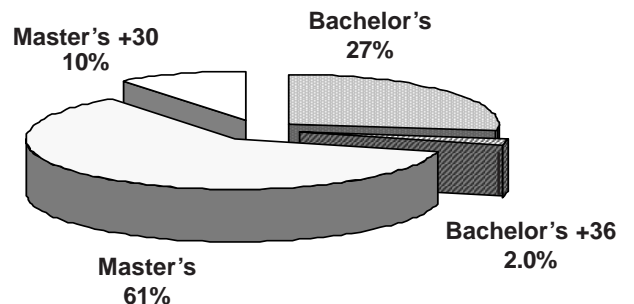


School Staff Characteristics

Professional Staff Experience

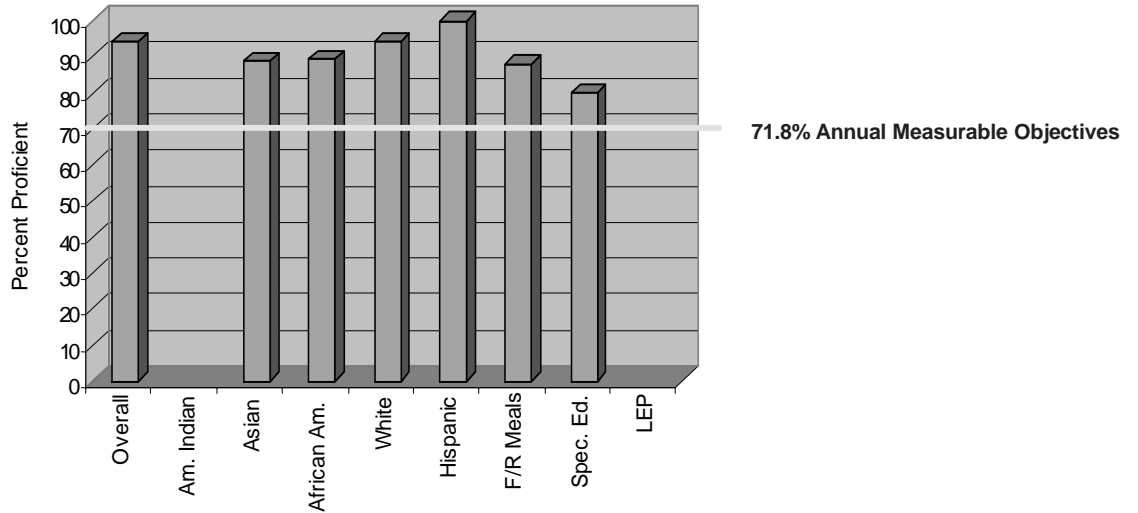


Education of Professional Staff

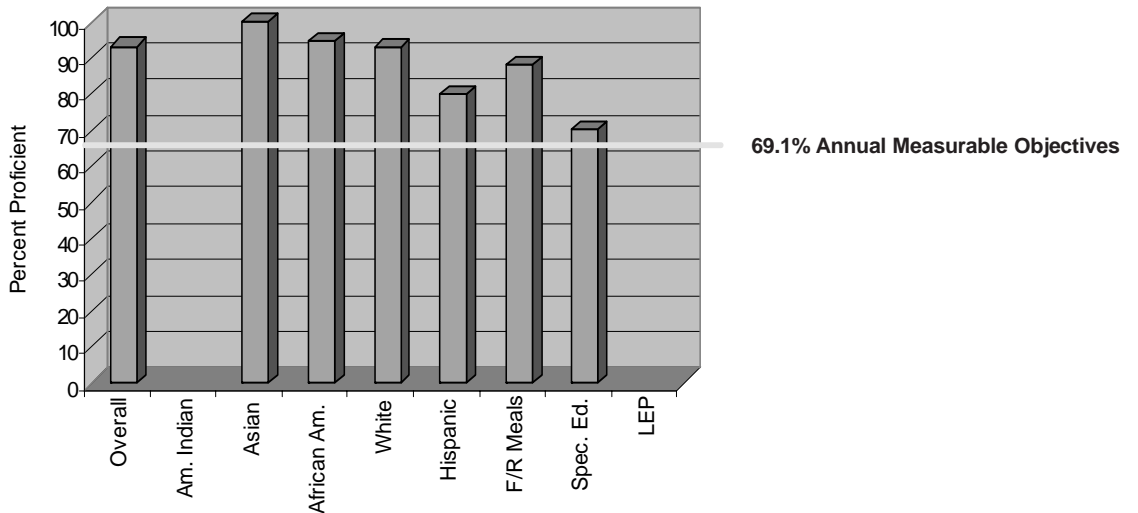


MSA Results: 2008

Reading: Grades 3, 4, and 5 Weighted Average



Mathematics: Grades 3, 4, and 5 Weighted Average



The graphs above show the percent of eligible third, fourth, and fifth grade students who performed at the proficient level on the Maryland State Assessment Reading and Mathematics tests. If a category is empty, there were too few students to monitor. For more information, go to www.msde.state.md.us, and click on 2008 Performance Report.