



NORTH BEND ELEMENTARY

January 2009

1445 North Bend Rd., Jarrettsville, MD 21084 • 410-692-7815 • 410-692-7826 fax

AT A GLANCE

FACILITY OPENED: 1991

ADDITIONS/RENOVATIONS: None

SCHOOL CAPACITY: 513

TOTAL ENROLLMENT: 402

CLASSROOM TEACHERS: 37

ADMINISTRATION

PRINCIPAL:

Steven R. Hardy

ASSISTANT PRINCIPAL:

Susan H. Gebhardt

INSTRUCTIONAL FACILITATOR:

Tammy O. Bosley



WELCOME

North Bend Elementary has successfully served the students and families of the Jarrettsville community since it first opened its doors in September 1991. For the past 15 years the school's staff has been enthusiastically working together with the families of the North Bend community to meet the individual needs of the whole child. Our common goal is to instill in children the life-long love of learning that fosters an appreciation of their environment and their place in the world.

North Bend staff, parents, and grandparents are committed to providing an inviting, supportive, challenging, and enjoyable school environment for all learners. The school's highly accomplished and dedicated staff combined with children who are ready to learn, a very active PTA, and a strong volunteer program result in quality learning opportunities for each and every child.

North Bend offers a full-day Kindergarten program, an "Earobics" Program for first graders, after school reading and math intervention programs, a strong school-wide Enrichment Program, and special education services to best meet the needs of each child attending our school. The school is a Governor's "Green School" and participated in a three-year grant as a "Bay School" with the Chesapeake Bay Foundation. In addition, technology is an integral component of daily instruction for students. The use of computers in the classroom, the media center, and in the school's Technology Lab has provided our students with integrated technology tools to meet academic and educational standards. The school improvement plan serves to improve student achievement and to provide students with Character Education traits through a well-developed and implemented "Character for Life" program. Major objectives include data analysis to improve classroom instruction, the infusion of technology throughout the curriculum, and the implementation of research based interventions to meet the needs of all learners. There is a passion for teaching and learning at North Bend Elementary. This has become both tradition and a culture for excellence within our school.



Steven R. Hardy
Principal

Student Population Characteristics

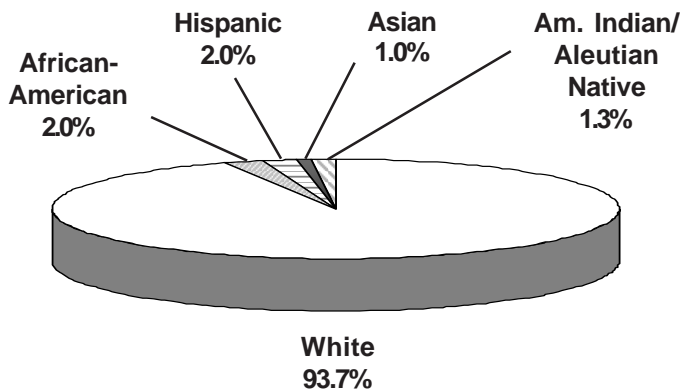
Student Enrollment	2005	2006	2007	2008	2009
Grade					
Pre-School	6	0	0	0	0
Pre-K	9	0	0	0	7
Kindergarten	56	62	61	57	72
1	68	65	65	57	61
2	79	70	69	65	57
3	83	80	70	71	61
4	79	86	77	70	75
5	91	86	86	79	69

Students Absent				
< 5 days	42.8%	32.8%	46.7%	46.7%
> 20 days	2.5%	2.6%	1.9%	1.9%
Student Mobility				
Entrants	4.9%	3.7%	3.3%	5.1%
Withdrawals	4.5%	4.2%	4.5%	2.3%

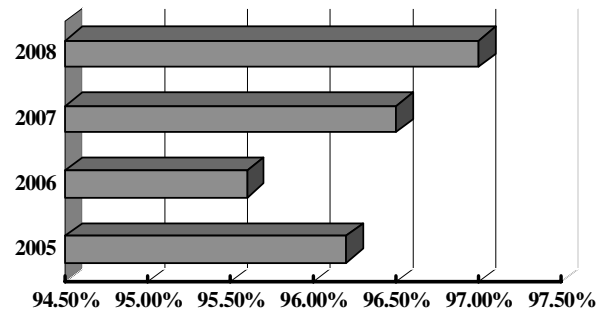
Students Receiving Special Services	2006 %	2007 %	2008 %
Free/Reduced Price Meals	9.7	12.2	11.9
Limited English Proficient	0	*	*
Special Education	18.3	16.1	13.4

*Fewer than 5 students

Student Membership by Ethnicity (2008)

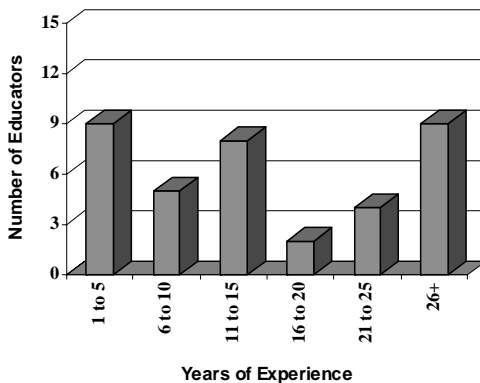


Student Attendance

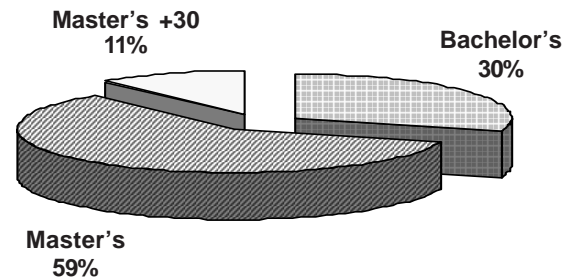


School Staff Characteristics

Professional Staff Experience

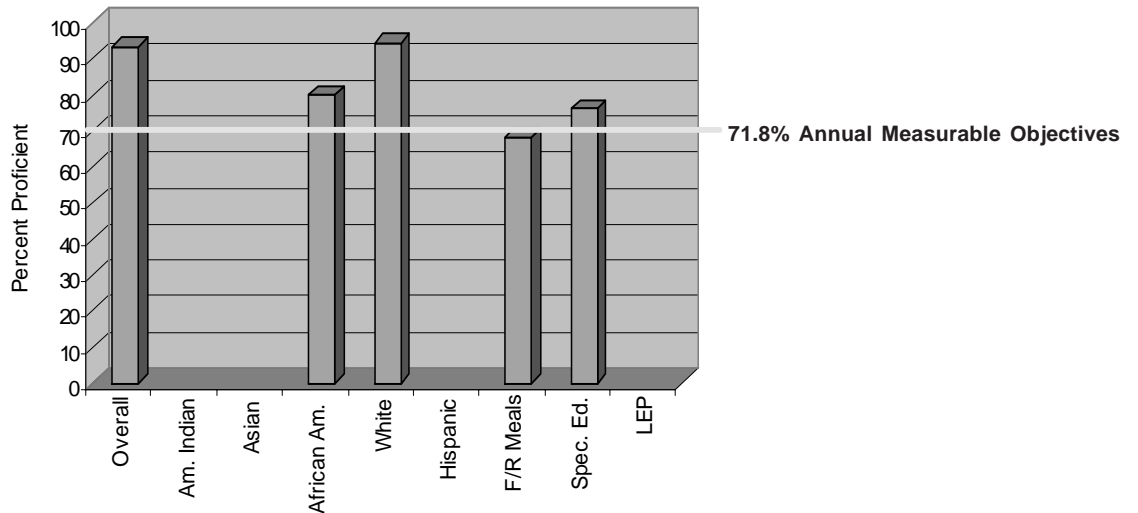


Education of Professional Staff

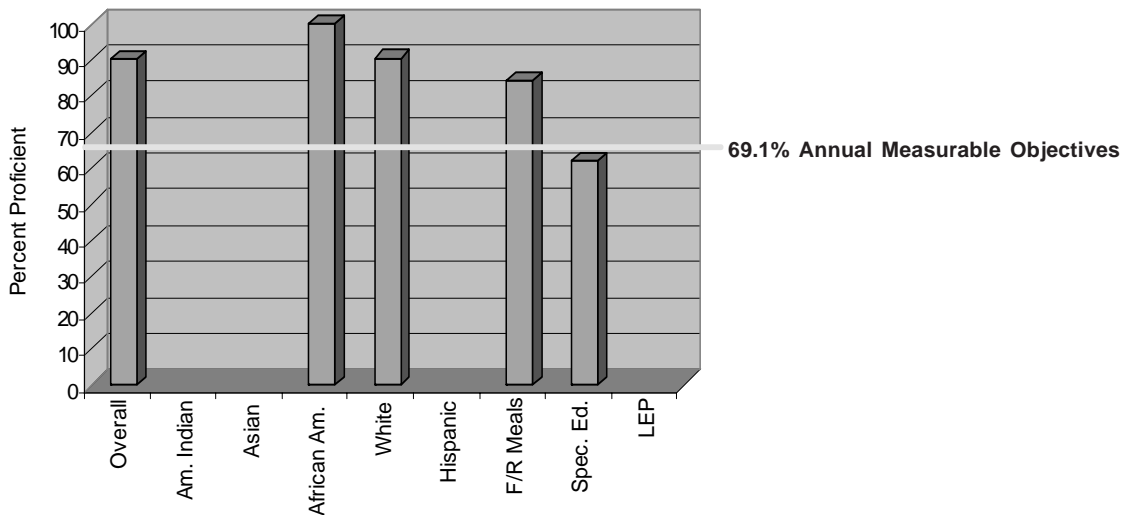


MSA Results: 2008

Reading: Grades 3, 4, and 5 Weighted Average



Mathematics: Grades 3, 4, and 5 Weighted Average



The graphs above show the percent of eligible third, fourth, and fifth grade students who performed at the proficient level on the Maryland State Assessment Reading and Mathematics tests. If a category is empty, there were too few students to monitor. For more information, go to www.msde.state.md.us, and click on 2008 Performance Report.