



WILLIAM PACA/OLD POST ROAD ELEMENTARY

January 2009

2706 Old Phila. Rd., Abingdon, MD 21009 • 410-612-2033/1566 • 410-612-1587 fax

AT A GLANCE

FACILITY OPENED: 1956

ADDITIONS/RENOVATIONS: 1964,
1985, 1997, 1998, 1999, 2000

SCHOOL CAPACITY: 940

TOTAL ENROLLMENT: 1,020

CLASSROOM TEACHERS: 86

ADMINISTRATION

PRINCIPAL:

Gail I. Dunlap

ASSISTANT PRINCIPALS:

Pamela E. Terry Lewis

Benjamin D. Richardson

INSTRUCTIONAL FACILITATOR:

Renee Villareal



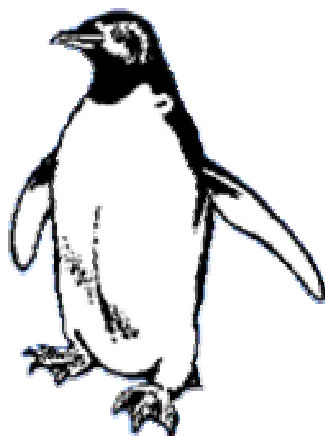
WELCOME

For the past 43 years, the professional staff at William Paca/Old Post Road Elementary School has worked tirelessly to help all of its students achieve academic excellence. Our location on Old Philadelphia Road ensures that our students come from a diverse geographic area and mandates that our school vision emphasizes inclusion for all, an appreciation for diversity, and a focus on student achievement.

We are aided in our mission by an active PTA that vigorously supports all school initiatives. Parent volunteers provide valuable service in our school everyday. A variety of program offerings help us to accommodate the diverse learning styles of our students. Support programs such as School-wide Enrichment, (2) centralized computer labs, outreach programs for School Health Readiness and individual student counseling support, helps to facilitate success for the whole child. Title I resources support our family liaisons, Title I paraprofessionals and additional reading support. Our Teacher Mentors, Reading and Math Specialists and Instructional Facilitator provide ongoing opportunities for staff development and family academic engagement. Intervention programs such as SIPPS, I-Station, Foundations, Wilson, and LAUNCH provide valuable additional practice opportunities for at-risk learners, as do our school-based Speech/Language and Special Education support staff. A variety of preschool programs and ten full-day Kindergarten classes provide early learning experiences for our youngest learners and help to build a strong foundation for academic success for all students.

Our School Improvement Team and the Instructional Leadership Team have utilized the analysis of existing data and an extensive knowledge of research-based best practices to target areas for school-wide improvement. Our current School Improvement Plan has identified reading, math and positive behavior goals as our focus for achieving continuous, ongoing school improvement. At William Paca/Old Post Road Elementary, we strive to achieve academic excellence every day.

Gail Dunlap
Principal



Student Population Characteristics

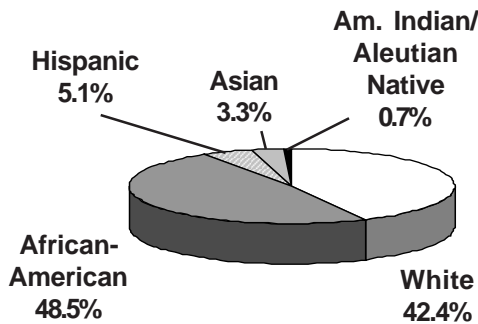
Student Enrollment	2005	2006	2007	2008	2009
Grade					
Pre-School	33	32	22	13	12
Pre-K	79	80	70	72	80
Kindergarten	157	172	167	178	149
1	154	159	167	168	180
2	154	170	146	151	166
3	149	152	168	134	157
4	135	150	153	146	130
5	165	137	151	148	146

Students Absent					
< 5 days	31.2%	24.3%	37.2%	37.2%	
> 20 days	10.1%	12.6%	7.5%	7.5%	
Student Mobility					
Entrants	13.4%	13.9%	15%	15%	
Withdrawals	12.8%	10.4%	13.7%	15%	

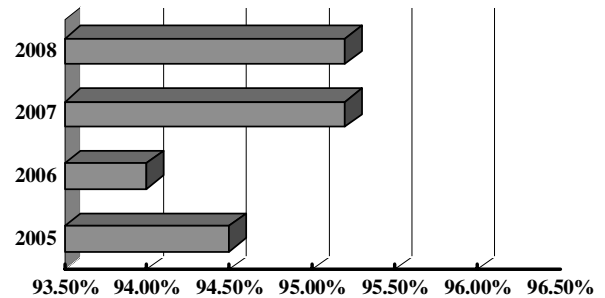
Students Receiving Special Services	2006 %	2007 %	2008 %
Free/Reduced Price Meals	51	54.8	53.4
Limited English Proficient	1.6	2.4	3.0
Special Education	14	12.4	13.9

**Reflects students enrolled in "ungraded special education"

Student Membership by Ethnicity (2008)

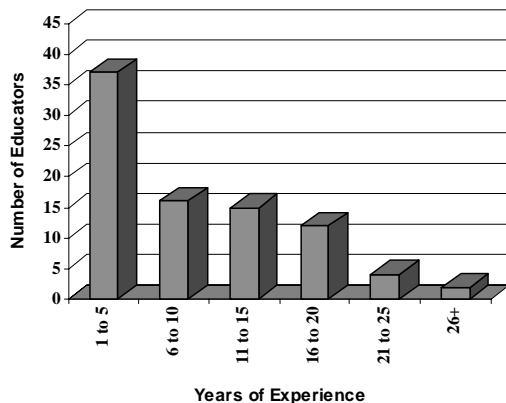


Student Attendance

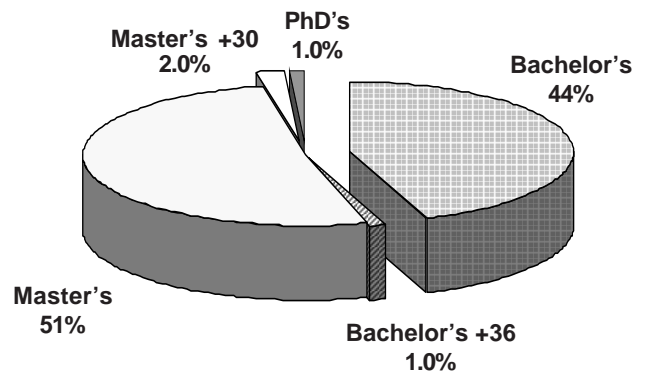


School Staff Characteristics

Professional Staff Experience

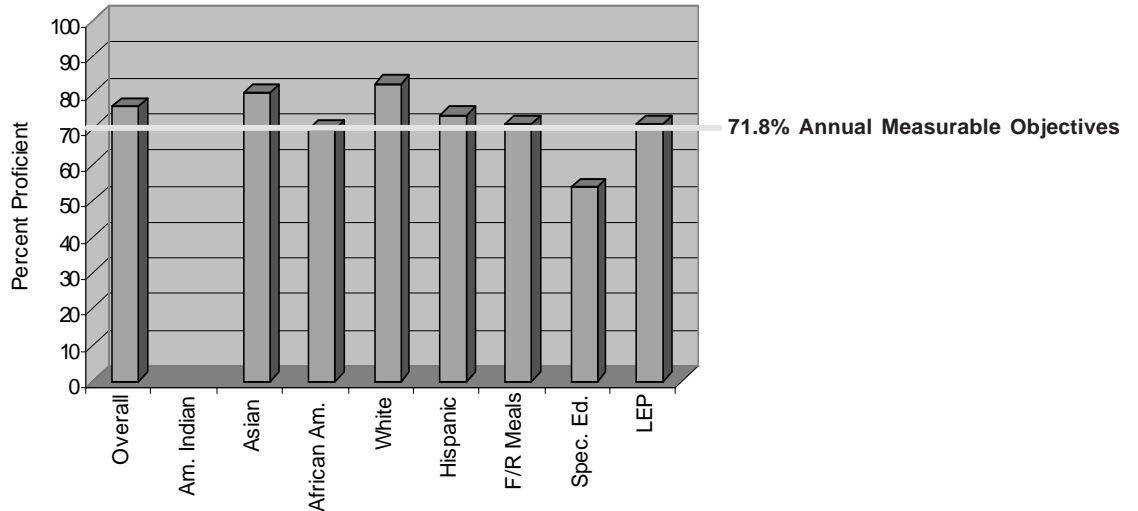


Education of Professional Staff

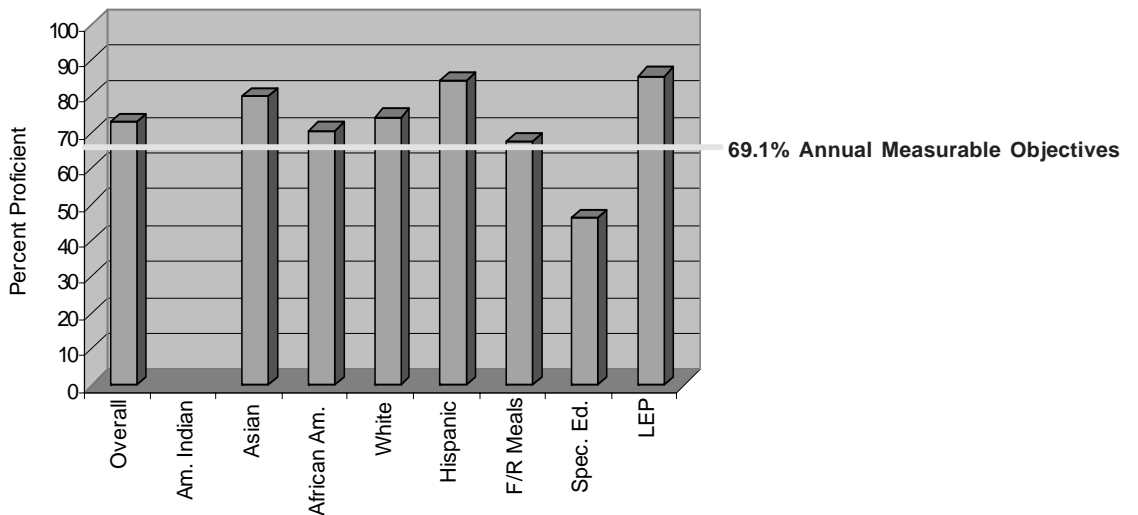


MSA Results: 2008

Reading: Grades 3, 4, and 5 Weighted Average



Mathematics: Grades 3, 4, and 5 Weighted Average



The graphs above show the percent of eligible third, fourth, and fifth grade students who performed at the proficient level on the Maryland State Assessment Reading and Mathematics tests. If a category is empty, there were too few students to monitor. For more information, go to www.msde.state.md.us, and click on 2008 Performance Report.