



# BEL AIR HIGH

January 2009

100 Heighe St, Bel Air, MD 21014 • 410-638-4600 • 410-638-4604 fax

## WELCOME

### AT A GLANCE

**FACILITY OPENED:** 1950

**ADDITIONS/RENOVATIONS:** 1954,  
1968, 1983

**SCHOOL CAPACITY:** 1,423

**TOTAL ENROLLMENT:** 1,380

**CLASSROOM TEACHERS:** 101

### ADMINISTRATION

**PRINCIPAL:**

Joseph L. Voskuhl

**ASSISTANT PRINCIPALS:**

Erica Harris

Kilo C. Mack

James F. Reynolds

**INSTRUCTIONAL FACILITATOR:**

Teresa Reilly



Bel Air High School is located, as it has been since the opening of the Bel Air Academy in 1815, in the county seat of Harford County. For over 185 years Bel Air has educated thousands of students who have gone on to further education at the collegiate and technical levels as well as employment and military service.

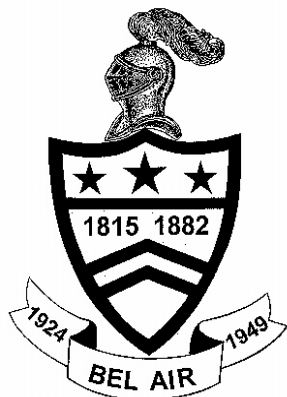
Consistently over the years, approximately 81% of our students are University of Maryland high school qualifiers. At graduation, 85% of our students plan college education; 3% plan technical or specialized education, and 10% plan to enter the work force and/or military.

During the course of four years, Bel Air High students are able to take 32 classes while accumulating the 26 required for graduation in Maryland. This full-inclusion, comprehensive program leads to Advanced Placement Class in Art (1), English (Music Forever), Languages, Mathematics (3), Science (4), and Social Studies (4) for usually almost one-third of the 1,600 plus students. Of those taking the AP tests, our usual success rate is 70%. This strong academic focus allows Bel Air High School to always exceed the local, state, and national averages on any tests of achievement (ACT, AP, SAT, MD-MSA's and HSA's).

In addition to our unusually strong academic focus, Bel Air High has a nationally recognized art and journalism program while also hosting award-winning vocal and instrumental music and physical education programs. Another highlight of student success is the Bel Air Drama Company. Not to be outdone, our 15 varsity sports programs produce annual county and regional champions on the way to state play-off competitions in a variety of male and female athletics.

In short, Bel Air High School has a long-standing reputation as one of the finest high schools in the state of Maryland.

*Joseph L. Voskuhl*  
Principal



# Student Population Characteristics

Student Enrollment	2005	2006	2007	2008	2009
Grade					
9	467	436	467	367	380
10	423	411	406	243	358
11	405	408	408	409	237
12	343	384	402	384	405

Students Absent	2005	2006	2007	2008
< 5 days	37.9%	31.4%	39.4%	39.4%
> 20 days	12.3%	15.6%	12.9%	12.9%

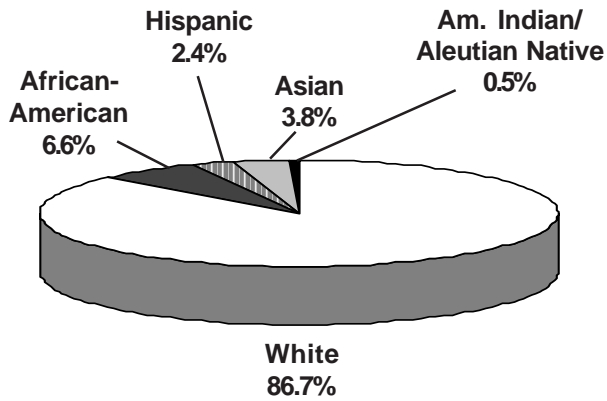
  

Student Mobility	2005	2006	2007	2008
Entrants	3.7%	3.4%	4.5%	3.6%
Withdrawals	5.8%	6.8%	6.6%	6.9%

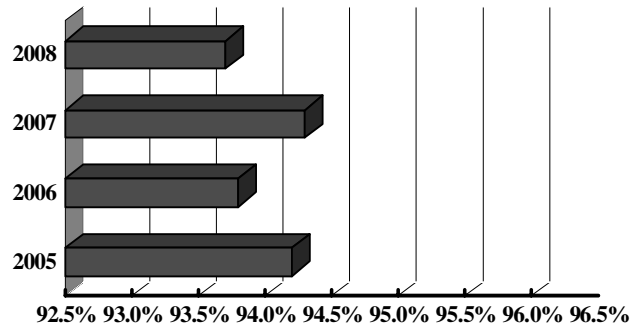
Students Receiving Special Services	2006 %	2007 %	2008 %
Free/Reduced Price Meals	7.4	7.8	8.2
Limited English Proficient	*	*	*
Special Education	10.5	9.9	10.1

\* Fewer than 5 students

## Student Membership by Ethnicity (2008)

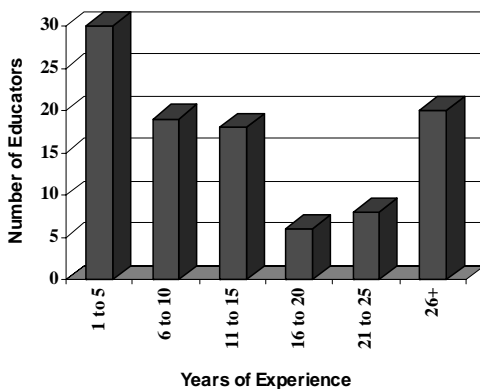


## Student Attendance

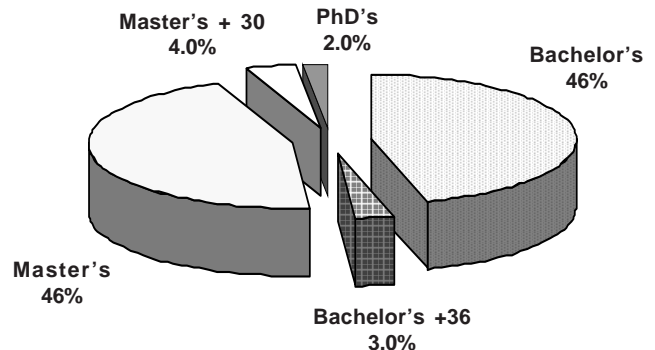


# School Staff Characteristics

## Professional Staff Experience



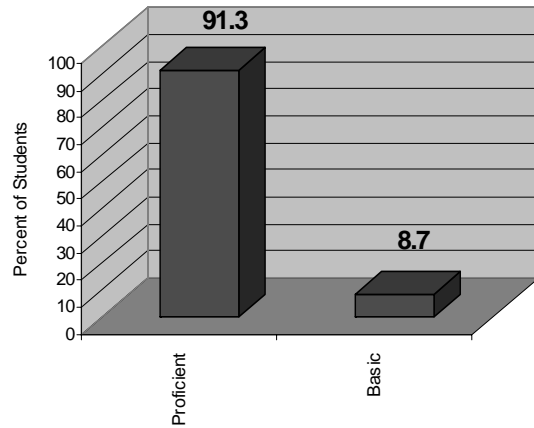
## Education of Professional Staff



### Post-Secondary Plans/Intentions (Class of 2008)

Plans/Intentions	#	%
Employment	25	6.8
Technical/Specialized School	13	3.5
2 year college	95	25.5
4 year college	175	47
Military	4	1.1
Other and no response <i>Includes those entering an apprenticeship program</i>	60	16.1

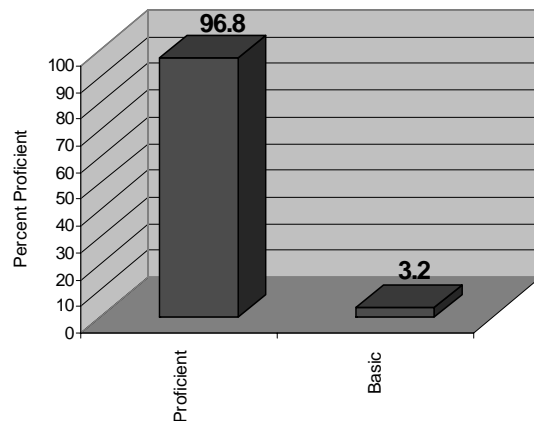
### 2008 English 2: Proficiency Levels



### Grade Point Averages: 2008

	Number of Students	Average GPA
Grade 9	367	2.69
Grade 10	243	2.54
Grade 11	409	2.77
Grade 12	384	2.86
<b>TOTAL Average GPA: 2.73</b>		

### 2008 Algebra: Proficiency Levels



### 2008 High School Assessment Test Participation and Status Grade 10 All Subjects\*

Test	Passing Score	% Passing
Algebra	412	96.8
English II	400	92
Government	396	98.4
Biology	394	94.4

\*Data is as of the current school year

### Average SAT Scores

	2008 Writing	2008 Math	2008 Verbal	2008 TOTAL	2007 TOTAL
Bel Air	527	553	531	1611	1597
Harford County	490	521	505	1516	1507
State	497	502	499	1498	1498
National	494	515	502	1511	1511