



# FALLSTON HIGH

January 2009

2301 Carrs Mill Rd., Fallston, MD 21047 • 410-638-4120 • 410-638-4125 fax

## AT A GLANCE

**FACILITY OPENED:** 1977

**ADDITIONS/RENOVATIONS:** None

**SCHOOL CAPACITY:** 1,529

**TOTAL ENROLLMENT:** 1,365

**CLASSROOM TEACHERS:** 101

## ADMINISTRATION

### PRINCIPAL:

Joseph A. Schmitz

### ASSISTANT PRINCIPALS:

Colin P. Carr

Jonise E. Stallings

Eileen R. Turowski

### INSTRUCTIONAL FACILITATOR:

Helen Miller



## WELCOME

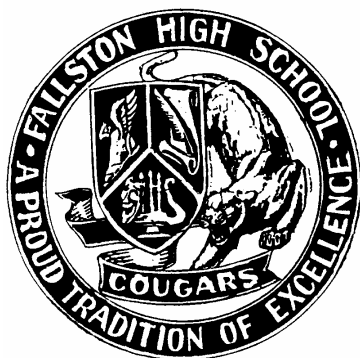
In keeping with our “Proud Tradition of Excellence,” Fallston High School provides students with the skills and knowledge to be successful after graduation.

Our School Improvement Plan stresses our commitment to a safe, positive learning environment for all, and to the acceleration of student learning and elimination of achievement gaps. To those ends, Fallston High School has programs in character education, service learning and school safety. Students are encouraged to push themselves to succeed at the highest academic levels possible. We offer over 120 courses. An extensive Advanced Placement program includes courses in biology, calculus, chemistry, English Literature, English Composition, environmental science, European history, world history, government, physics, psychology, statistics, and United States history. Our faculty, in addition to graduate studies, is actively involved in improving instruction and student achievement through the formation of professional learning communities within the school.

Fallston High School enjoys a high level of community and parent support. There is an active PTSA, as well as parent support groups for the athletic program, and instrumental and choral music programs. The school also benefits from numerous business partnerships.

All of these factors combine to make Fallston one of Maryland’s finest highest schools.

*Joseph A. Schmitz*  
Principal



# Student Population Characteristics

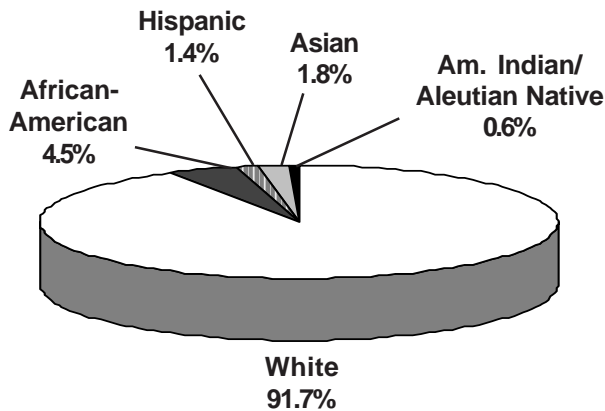
Student Enrollment	2005	2006	2007	2008	2009
Grade					
9	419	446	391	294	300
10	437	390	415	378	278
11	376	424	377	407	385
12	403	383	423	374	402

Students Absent	2005	2006	2007	2008
< 5 days	41.7%	31.8%	44.4%	44.4%
> 20 days	10.4%	11.6%	7.1%	7.1%
Student Mobility				
Entrants	2.2%	3.1%	2.9%	2.3%
Withdrawals	3.7%	3.6%	4.0%	4.4%

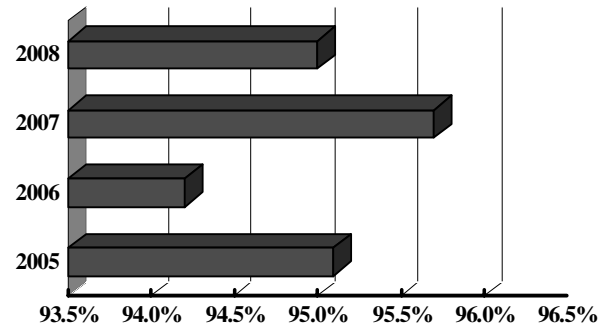
Students Receiving Special Services	2006 %	2007 %	2008 %
Free/Reduced Price Meals	4.3	4.1	4.9
Limited English Proficient	*	*	0
Special Education	9.0	8.2	7.2

\* Fewer than 5 students

## Student Membership by Ethnicity (2008)

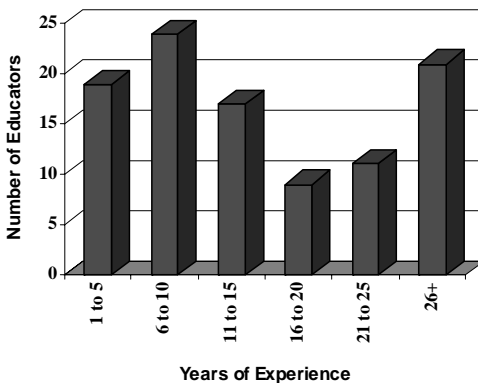


## Student Attendance

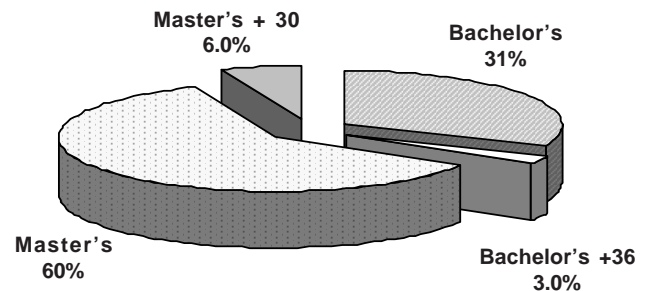


# School Staff Characteristics

## Professional Staff Experience



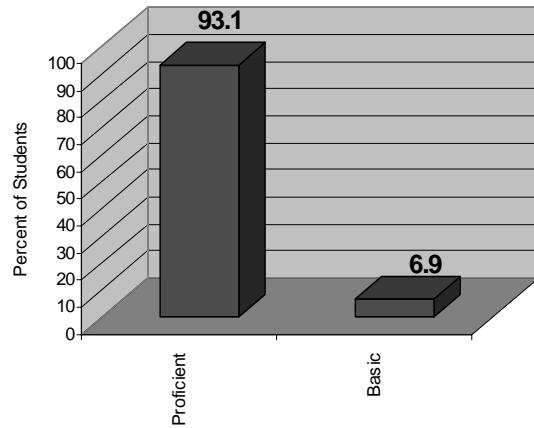
## Education of Professional Staff



### Post-Secondary Plans/Intentions (Class of 2008)

Plans/Intentions	#	%
Employment	23	6.2
Technical/Specialized School	5	1.4
2 year college	89	24.1
4 year college	181	49.1
Military	8	2.2
Other and no response <i>Includes those entering full- or part-time employment, plus school</i>	63	17.1

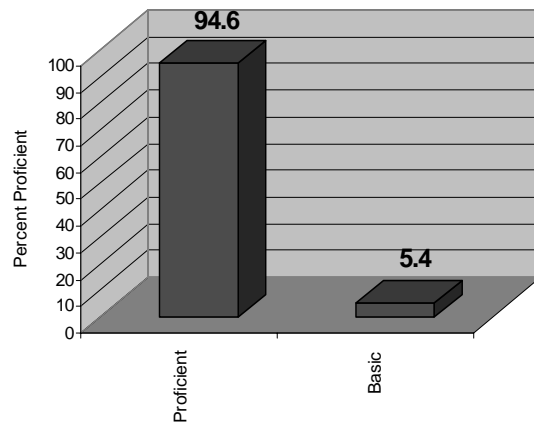
### 2008 English 2: Proficiency Levels



### Grade Point Averages: 2008

	Number of Students	Average GPA
Grade 9	294	2.75
Grade 10	378	2.70
Grade 11	407	2.78
Grade 12	374	2.74
<b>TOTAL Average GPA: 2.74</b>		

### 2008 Algebra: Proficiency Levels



### 2008 High School Assessment Test Participation and Status Grade 10 All Subjects\*

Test	Passing Score	% Passing
Algebra	412	90.0
English II	400	87.1
Government	396	94.8
Biology	394	89.0

\*Data is as of the current school year

### Average SAT Scores

	2008 Writing	2008 Math	2008 Verbal	2008 TOTAL	2007 TOTAL
Fallston	493	540	517	1550	1551
Harford County	490	521	505	1516	1507
State	497	502	499	1498	1498
National	494	515	502	1511	1511