



HAVRE DE GRACE HIGH

January 2009

700 Congress Ave., Havre de Grace, MD 21078 • 410-939-6600 • 410-939-6667 fax

AT A GLANCE

FACILITY OPENED: 1955

ADDITIONS/RENOVATIONS: 1983

SCHOOL CAPACITY: 850

TOTAL ENROLLMENT: 764

CLASSROOM TEACHERS: 55

ADMINISTRATION

PRINCIPAL:

M. Patricia Walling

ASSISTANT PRINCIPALS:

Senora W. Haywood

Bryan E. Pawlicki

INSTRUCTIONAL FACILITATOR:

Mary A. Boswell McComas



WELCOME

Havre de Grace High School is a place with vision, rich with energy and enthusiasm, and high expectations for all. We have promoted self worth and dignity within our student population that is infused through curriculum and extracurricular activities, knowledge, understanding, acceptance, and appreciation for each and everyone.

The committed and talented faculty proved that excellence for all is a realistic and attainable expectation. The strategic planning process, which includes administrators, faculty, staff, students, parents, and our business community, is used to insure success for all students. Havre de Grace High and its community embrace the notion that we can achieve higher and better, as we continue to fulfill our visions of excellence.

The school is located within an incorporated city of approximately 12,000 people located at the confluence of the majestic Susquehanna River and the incomparable Chesapeake Bay. It is classified as suburban and represents all socio-economic levels. The residents of Havre de Grace are employed by local businesses, Aberdeen Proving Ground, and the Baltimore business community.

Havre de Grace High believes in its motto, which serves as the basis of our school's vision: "Enter to Learn — Learn to Serve."

M. Patricia Walling
Principal



Student Population Characteristics

Student Enrollment	2005	2006	2007	2008	2009
Grade					
9	231	243	203	214	229
10	167	191	193	186	179
11	155	153	169	187	177
12	152	134	152	182	179

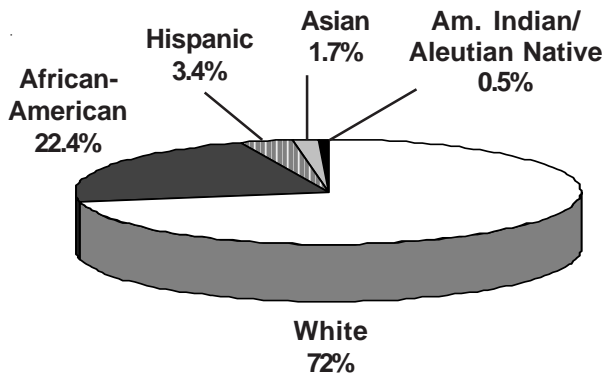
Students Absent	2005	2006	2007	2008
< 5 days	20.8%	16.8%	23.3%	23.3%
> 20 days	27.9%	31.4%	26.8%	26.8%

Student Mobility	2005	2006	2007	2008
Entrants	6.7%	9.3%	8.1%	8.8%
Withdrawals	14.8%	14.1%	13.3%	12.8%

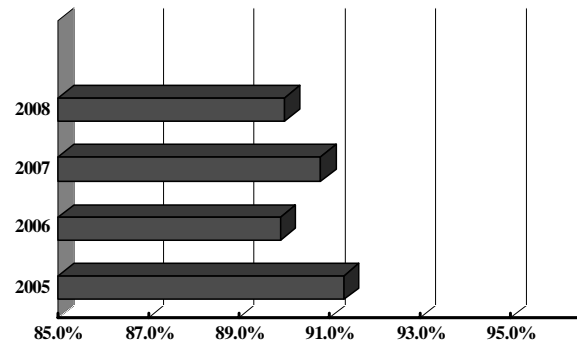
Students Receiving Special Services	2006 %	2007 %	2008 %
Free/Reduced Price Meals	28.2	29.3	30.1
Limited English Proficient	*	*	*
Special Education	14.2	13.9	14

* Fewer than 5 students

Student Membership by Ethnicity (2008)

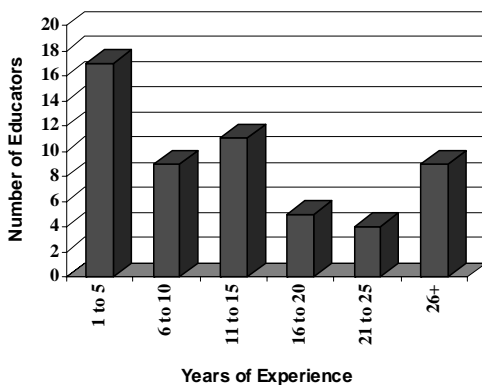


Student Attendance

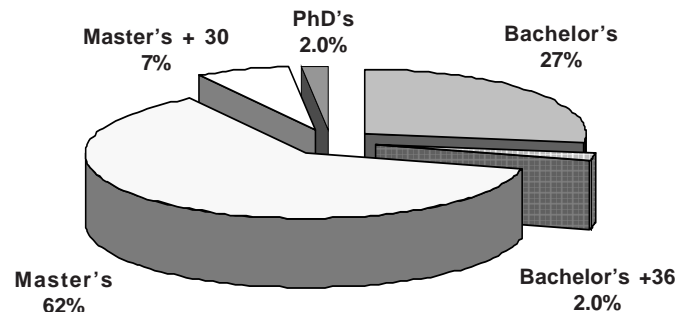


School Staff Characteristics

Professional Staff Experience



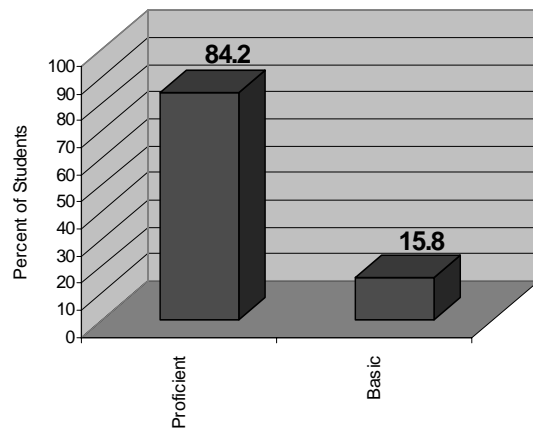
Education of Professional Staff



Post-Secondary Plans/Intentions (Class of 2008)

Plans/Intentions	#	%
Employment	17	10.4
Technical/Specialized School	1	0.6
2 year college	54	32.9
4 year college	44	26.8
Military	8	4.9
Other and no response <i>Includes those entering an apprenticeship program</i>	40	24.3

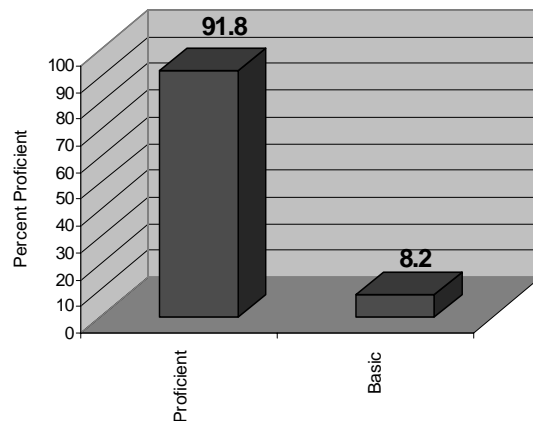
2008 English 2: Proficiency Levels



Grade Point Averages: 2008

Grade	Number of Students	Average GPA
Grade 9	214	1.91
Grade 10	186	2.25
Grade 11	187	2.36
Grade 12	182	2.49
TOTAL Average GPA:		2.24

2008 Algebra: Proficiency Levels



2008 High School Assessment Test Participation and Status Grade 10 All Subjects*

Test	Passing Score	% Passing
Algebra	412	81.6
English II	400	66.9
Government	396	92.6
Biology	394	74.1

*Data is as of the current school year

Average SAT Scores

	2008 Writing	2008 Math	2008 Verbal	2008 TOTAL	2007 TOTAL
Havre de Grace	488	507	500	1495	1488
Harford County	490	521	505	1516	1507
State	497	502	499	1498	1498
National	494	515	502	1511	1511