



# BEL AIR MIDDLE

January 2009

99 Idlewild Street, Bel Air, MD 21014 • 410-638-4140 • 410-638-4144 fax

## AT A GLANCE

**FACILITY OPENED:** 1961

**ADDITIONS/RENOVATIONS:** 1967,  
1968, 1994

**SCHOOL CAPACITY:** 1,318

**TOTAL ENROLLMENT:** 1,249

**CLASSROOM TEACHERS:** 94

## ADMINISTRATION

### PRINCIPAL:

Sean W. Abel

### ASSISTANT PRINCIPALS:

Stuart Hutchinson

Marcia T. Boccia

James M. Gunning

### INSTRUCTIONAL FACILITATOR:

Kim Adkins



## WELCOME

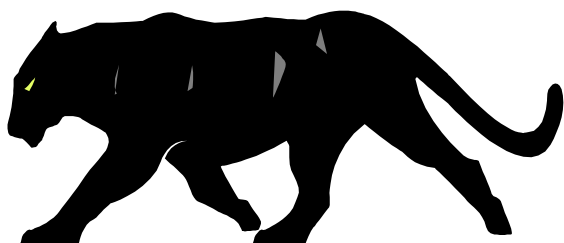
The dedicated staff of Bel Air Middle is committed to supporting a learning community that allows our students to develop their intellectual and personal potential in a safe, comfortable setting. Bel Air Middle students continue to excel on all measures of student achievement.

To encourage and promote high achievement and rigorous standards, our School Improvement Plan again focuses on the infusion of reading, writing, math, and critical thinking strategies across the curriculum and the implementation of a character education program.

Our continuous, job-embedded professional development activities, differentiated by team and department, allow our staff to implement our school improvement objectives across grade levels, to collect relevant data, and to analyze this data for continuous improvement. Quality instruction is also reinforced and strengthened through our partnership with Towson University as a Professional Development School. Bel Air Middle has been recognized as a National Blue Ribbon School of Excellence.

Our PTA is comprised of an outstanding group of parents and teachers who are actively involved in the development and implementation of numerous school programs and activities which enrich the educational experiences of all our students.

*Sean W. Abel*  
Principal



# Student Population Characteristics

Student Enrollment	2005	2006	2007	2008	2009
Grade					
6	415	489	481	392	422
7	499	426	483	430	396
8	488	519	439	422	431

Students Absent	2005	2006	2007	2008
< 5 days	38.3%	38.3%	46%	46%
> 20 days	6.2%	6.3%	3.6%	3.6%

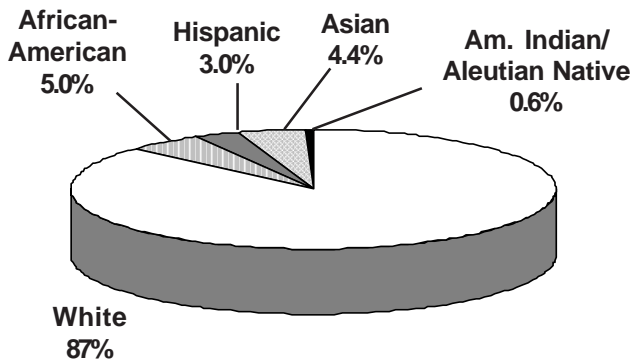
  

Student Mobility	2005	2006	2007	2008
Entrants	3.7%	4.5%	4.3%	4.1%
Withdrawals	4.4%	4.4%	4.0%	3.9%

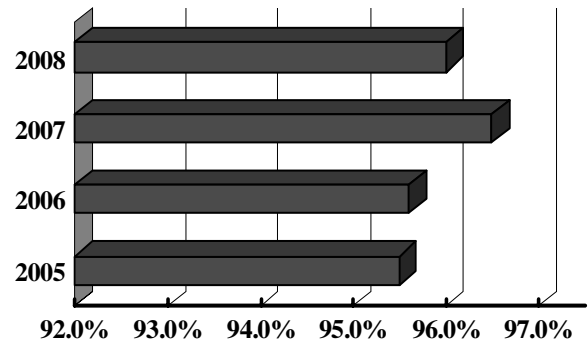
Students Receiving Special Services	2006 %	2007 %	2008 %
Free/Reduced Price Meals	7.6	7.8	8.8
Limited English Proficient	0.5	0.4	*
Special Education	12.8	12.8	10.6

\* Fewer than 5 students

## Student Membership by Ethnicity (2008)

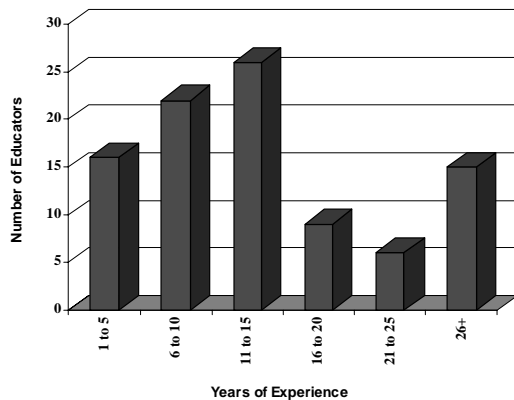


## Student Attendance

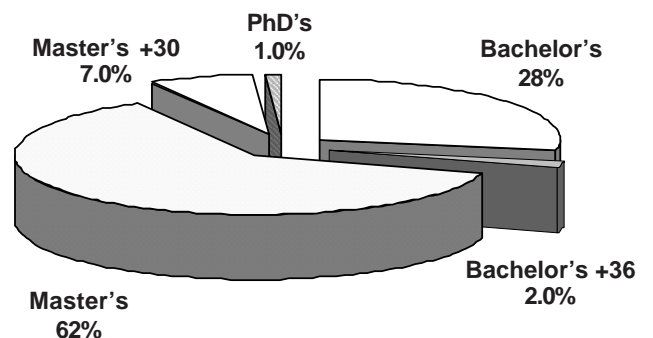


# School Staff Characteristics

## Professional Staff Experience

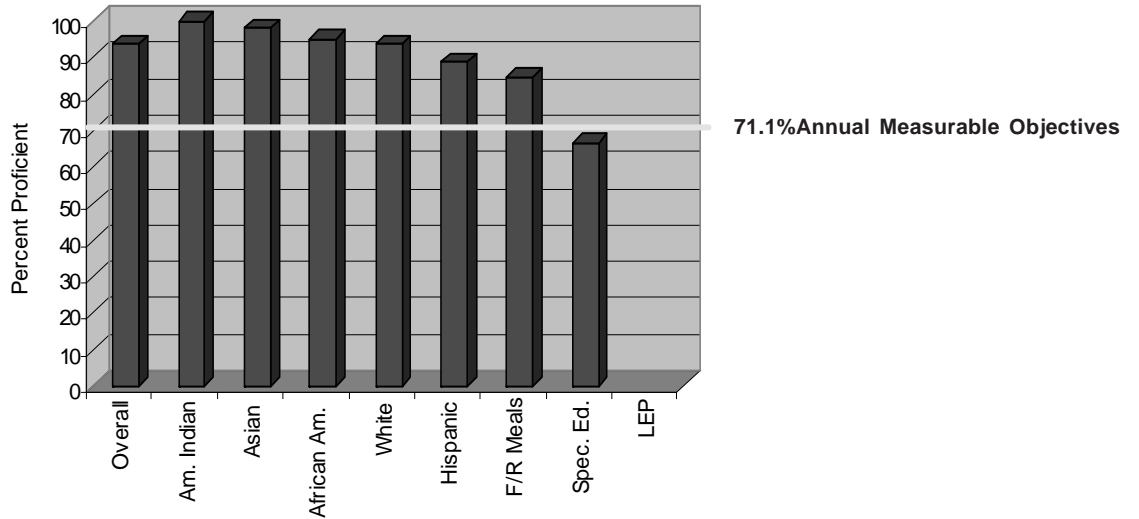


## Education of Professional Staff

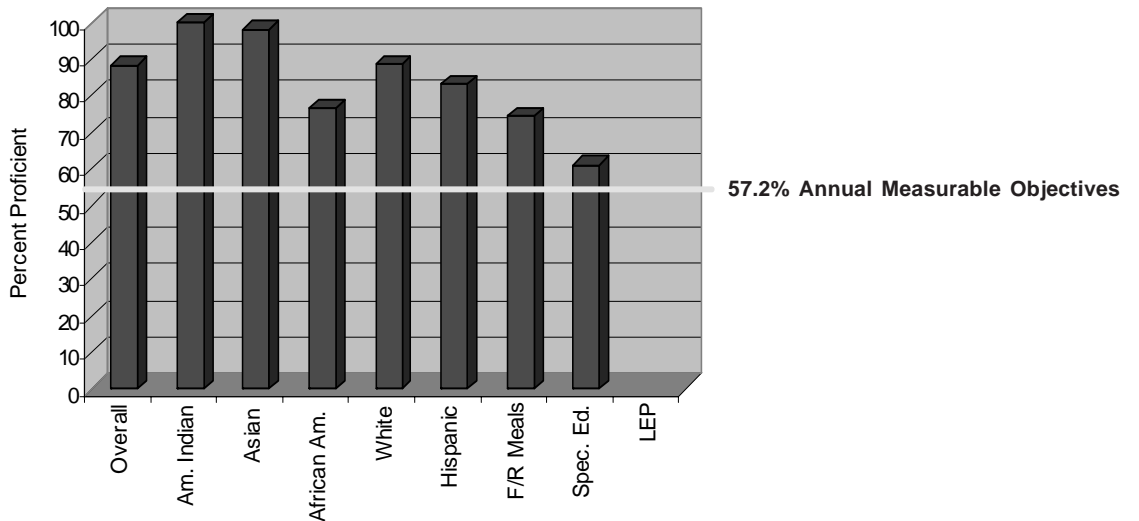


## MSA Results: 2008

### Reading: Grades 6, 7, and 8 Weighted Average



### Mathematics: Grade 8 Weighted Average



*The graphs above show the percent of eligible sixth, seventh, and eighth grade students who performed at the proficient level on the Maryland State Assessment Reading and Mathematics tests. If a category is empty, there were too few students to monitor. For more information, go to [www.msde.state.md.us](http://www.msde.state.md.us), and click on 2008 Performance Report.*