



ABERDEEN MIDDLE

January 2009

111 Mount Royal Ave., Aberdeen, MD 21001 • 410-273-5510 • 410-273-5542 fax

AT A GLANCE

FACILITY OPENED: 1973

ADDITIONS/RENOVATIONS: 1982,
1997, 1999

SCHOOL CAPACITY: 1,709

TOTAL ENROLLMENT: 1,120

CLASSROOM TEACHERS: 96

ADMINISTRATION

PRINCIPAL:

Chandra P. Krantz

ASSISTANT PRINCIPALS:

Lamark Holley

Natalie N. Holloway

James L. Johnson

INSTRUCTIONAL FACILITATOR:

Leslie E. Sunderland



WELCOME

One only needs to walk through the doors of Aberdeen Middle School to feel “Eagle Pride”. Our staff and students have learned to work together in a spirit of harmony and cooperation to reach common educational goals and a sense of achievement.

AMS offers a fully inclusive environment, which continually affords students the opportunity to challenge themselves.

The AMS staff is committed to providing high quality education for all students. This commitment spans from the Academics to the Arts. Access to a varied curriculum with rigor and relevance in the core areas of Language Arts, Reading, Mathematics, Social Studies and Science is provided on a daily basis. Extra emphasis is placed on Mathematics and Reading through intervention programs. In addition, all students participate in the Visual Arts, Physical Education, Family and Consumer Sciences, Music, and Computer Education. Additional experiences for students include: Health Education, Foreign Language and Character Education, which focuses on life skills to help students become contributing and productive citizens.

An active PTA, parent volunteers, business partners, and our School Improvement Team vigorously support many educational programs and school-wide initiatives. The 21st Century Community Learning Centers after-school program provides club selections that include tutoring and support from the City of Aberdeen as well as a variety of other local and national partnerships. A partnership with Aberdeen Proving Ground provides field trips, supplies, and Math and Science engineers who volunteer time to meet with groups of students to mentor and to share various career opportunities. In addition, our student population also reaps the benefits of our participation in the *Boys il Men Program*, which helps to build bridges between boys and positive role models both within the school walls and beyond.

Our mission at AMS is to promote positive attitudes, integrity and collaboration while inspiring life-long learning for the entire community.

Chandra P. Krantz
Principal



Student Population Characteristics

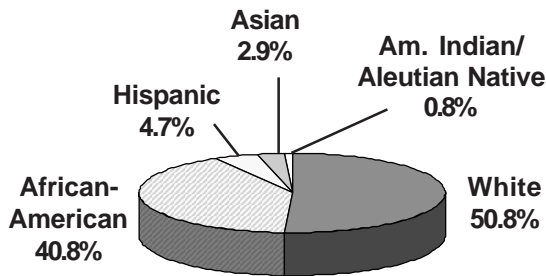
Student Enrollment	2005	2006	2007	2008	2009
Grade					
6	410	427	374	357	404
7	413	427	415	370	350
8	479	393	418	368	366

Students Absent	2005	2006	2007	2008
< 5 days	25.4%	27.5%	32.2%	32.2%
> 20 days	18.7%	16.6%	15.2%	15.2%

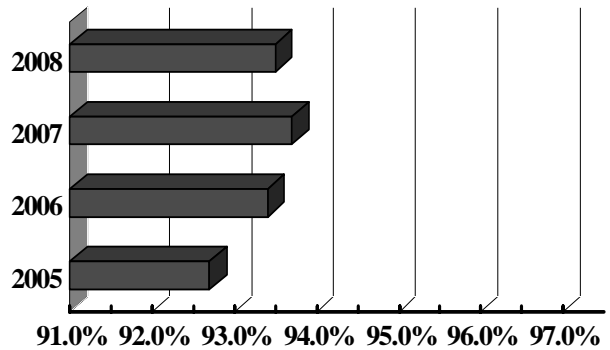
Student Mobility	2005	2006	2007	2008
Entrants	14%	12.1%	11.6%	11.7%
Withdrawals	12.4%	11.5%	12.5%	14.5%

Students Receiving Special Services	2006 %	2007 %	2008 %
Free/Reduced Price Meals	44.8	41.4	39.9
Limited English Proficient	0.6	0.8	1.0
Special Education	20.5	17.7	18.6

Student Membership by Ethnicity (2008)

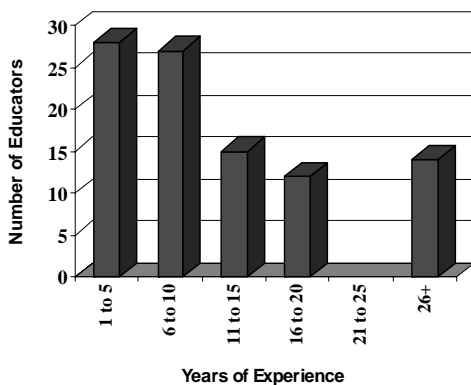


Student Attendance

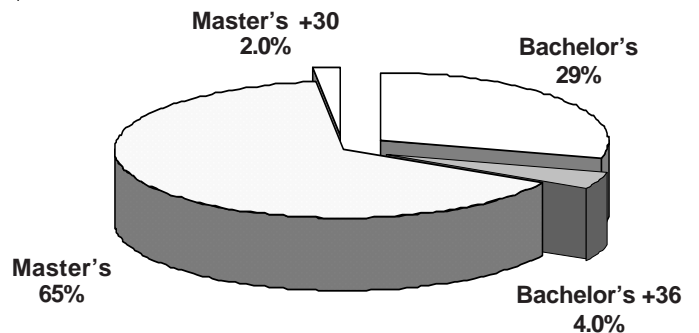


School Staff Characteristics

Professional Staff Experience

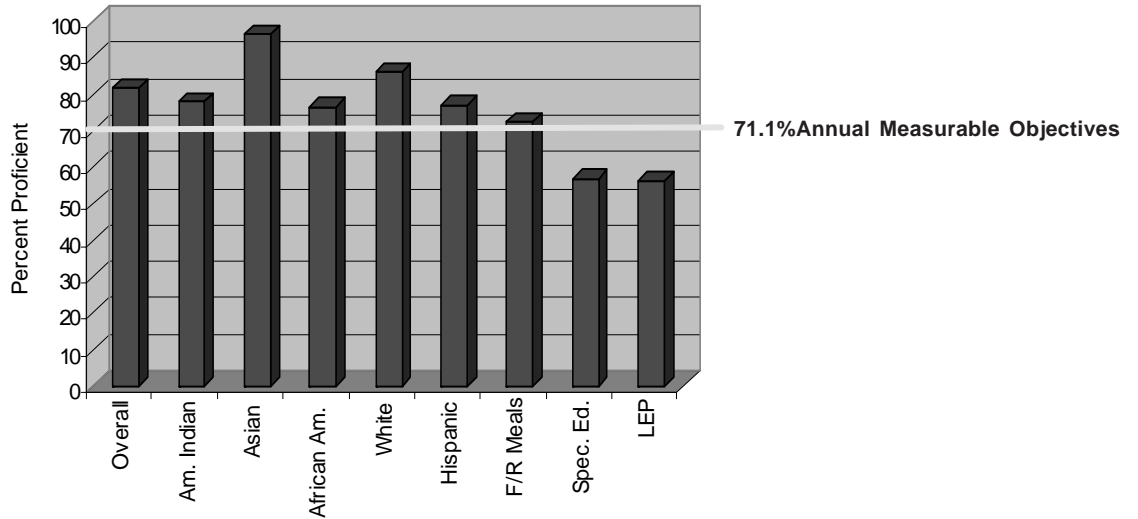


Education of Professional Staff

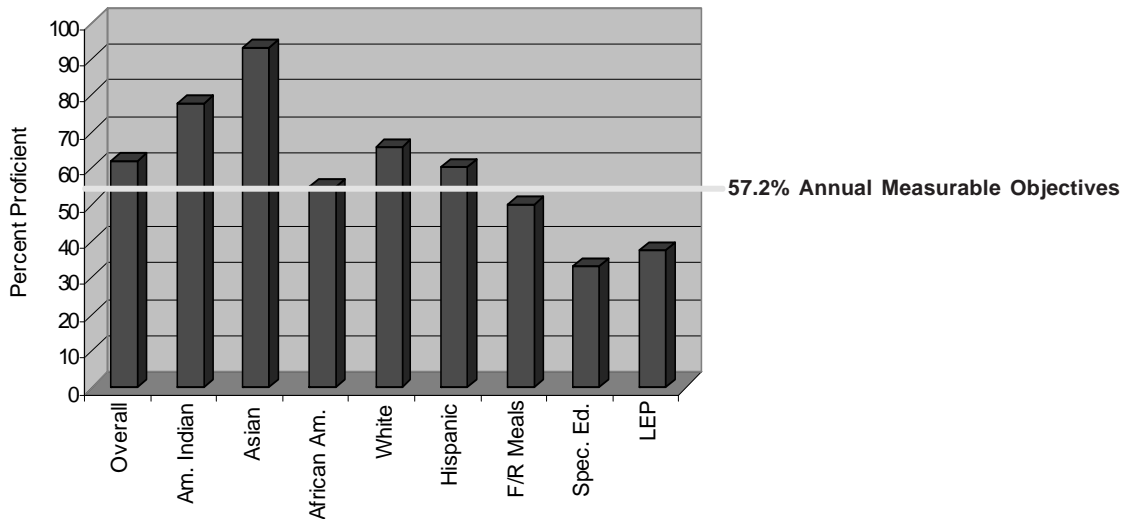


MSA Results: 2008

Reading: Grades 6, 7, and 8 Weighted Average



Mathematics: Grades 6, 7, and 8 Weighted Average



The graphs above show the percent of eligible sixth, seventh, and eighth grade students who performed at the proficient level on the Maryland State Assessment Reading and Mathematics tests. If a category is empty, there were too few students to monitor. For more information, go to www.msde.state.md.us, and click on 2008 Performance Report.