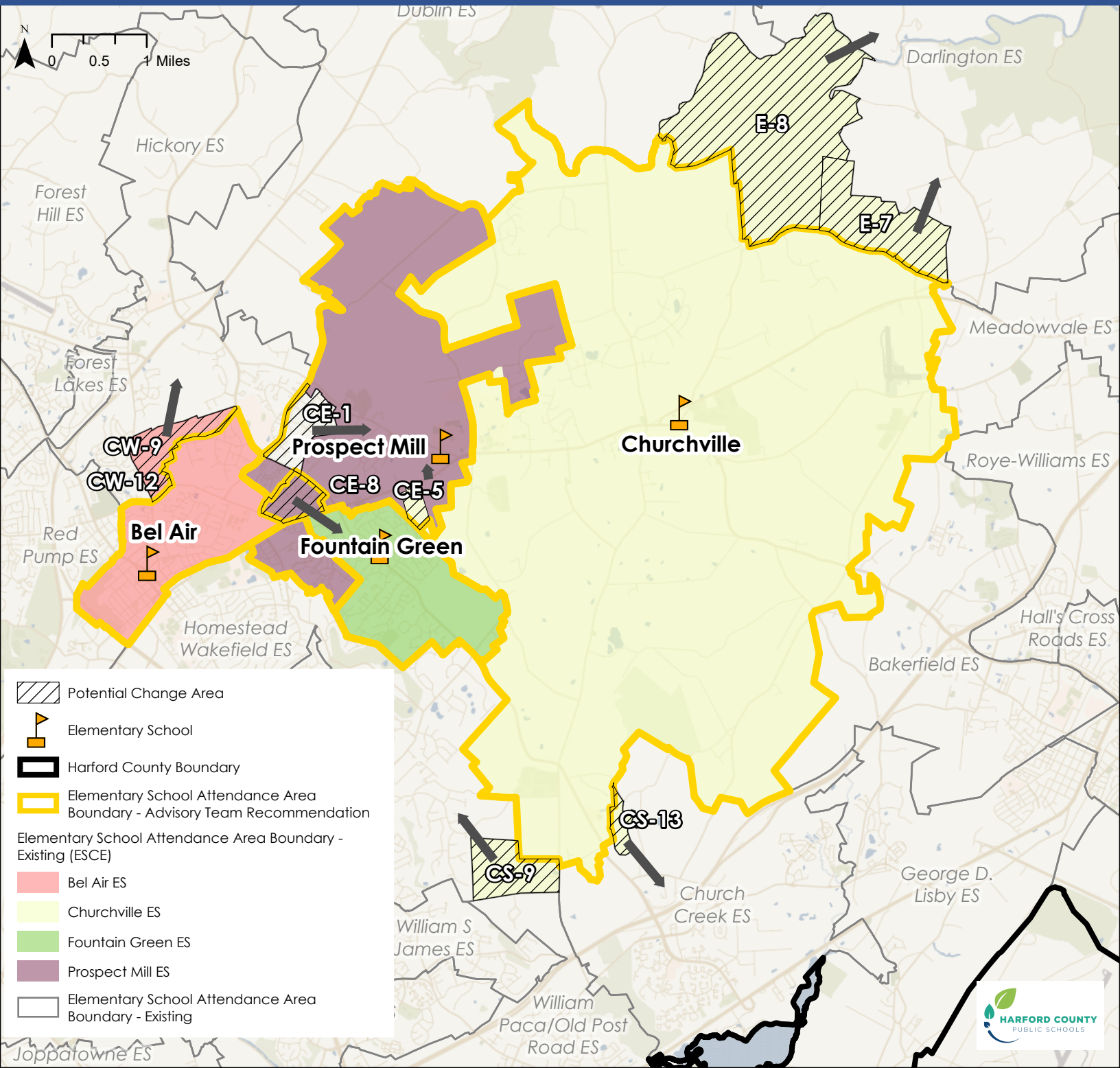




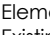

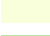











District Overview - Advisory Team Recommendation

Elementary School Center East (ESCE)



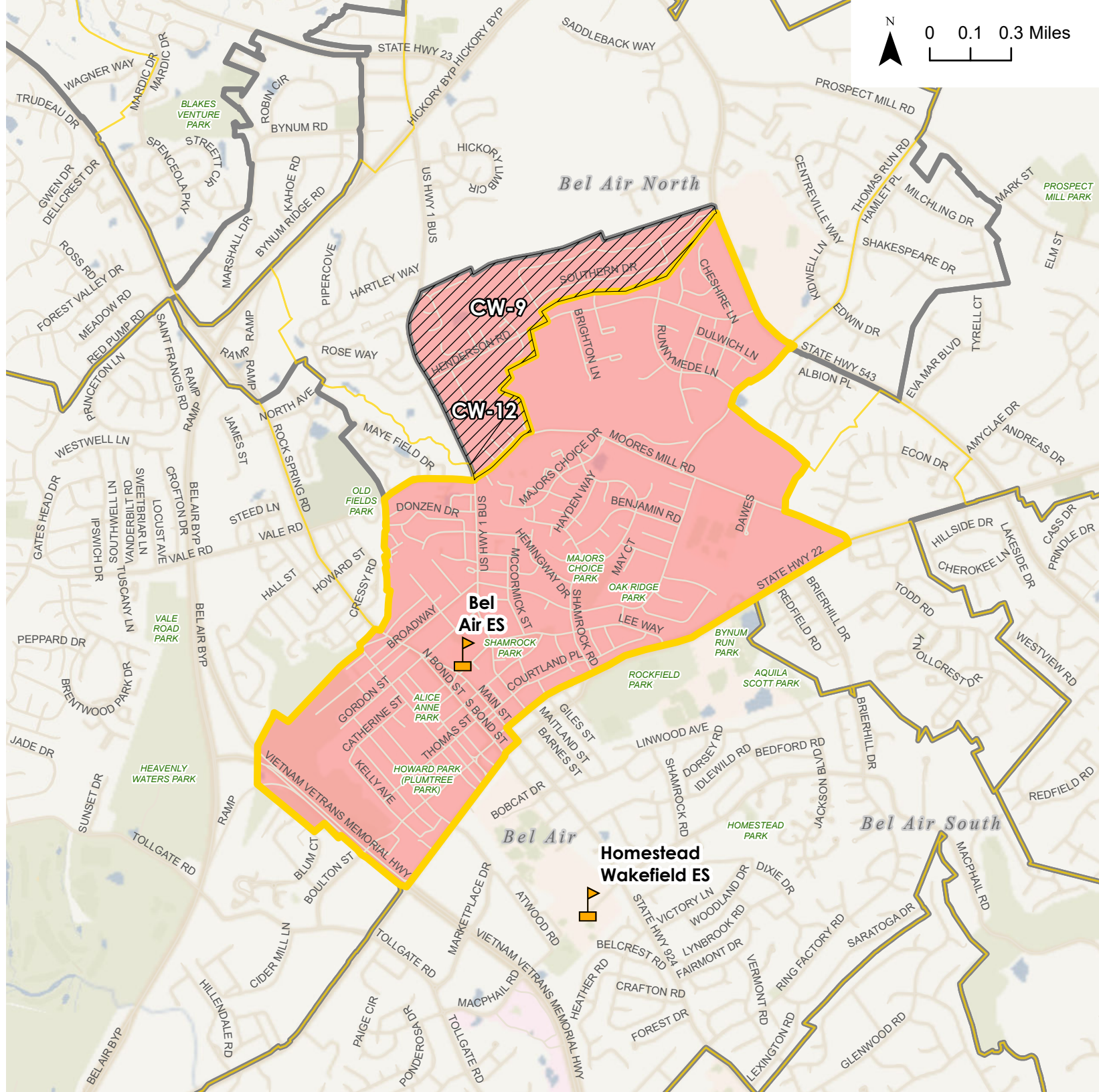
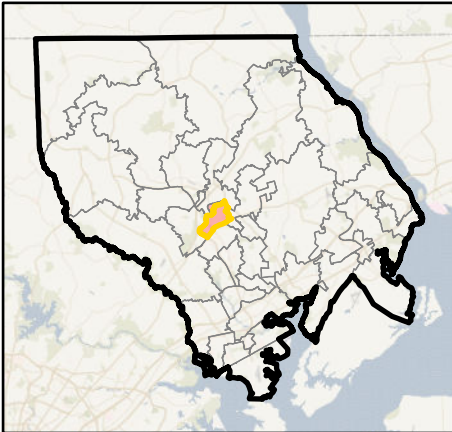
-  Potential Change Area
-  Elementary School
-  Harford County Boundary
-  Elementary School Attendance Area Boundary - Advisory Team Recommendation
-  Elementary School Attendance Area Boundary - Existing (ESCE)
-  Bel Air ES
-  Churchville ES
-  Fountain Green ES
-  Prospect Mill ES
-  Elementary School Attendance Area Boundary - Existing

Advisory Team Elementary School Boundary Recommendation - Bel Air ES




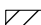



-  Elementary School
-  District Boundary
-  Advisory Team Elementary School Boundary Recommendation for Bel Air ES
-  Potential Change Area
- Current Configuration - Elementary Schools**
-  Bel Air ES Current Attendance Area
-  Elementary School Attendance Area Boundary Outline - Current Attendance Area

Potential Change Areas:
 CW-9: From Bel Air ES to Hickory ES
 CW-12: From Bel Air ES to Hickory ES

Overview Map

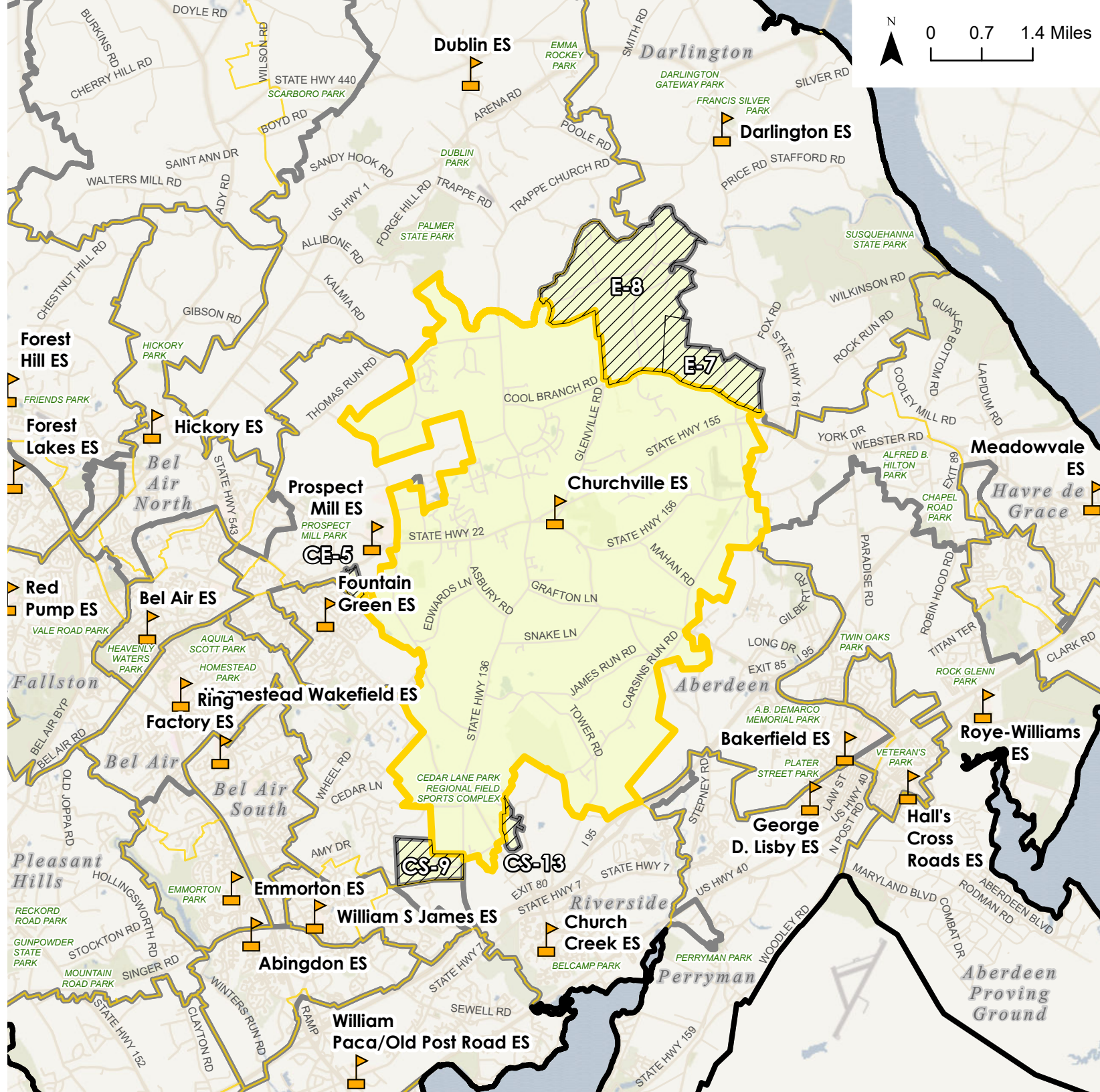
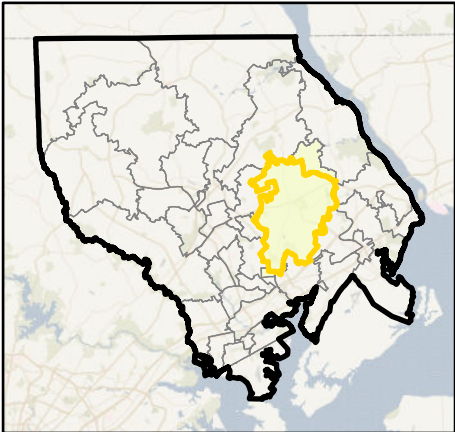


Advisory Team Elementary School Boundary Recommendation - Churchville ES




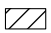




-  Elementary School
-  District Boundary
-  Advisory Team Elementary School Boundary Recommendation for Churchville ES
-  Potential Change Area
- Current Configuration - Elementary Schools**
-  Churchville ES Current Attendance Area
-  Elementary School Attendance Area
-  Boundary Outline - Current Attendance Area

Potential Change Areas:
 CE-5: From Churchville ES to Prospect Mill ES
 E-7: From Churchville ES to Darlington ES
 CS-9: From Churchville ES to Homestead Wakefield ES
 CS-13: From Churchville ES to Church Creek ES
 E-8: From Churchville ES to Darlington ES

Overview Map



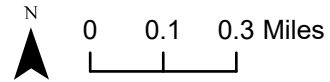
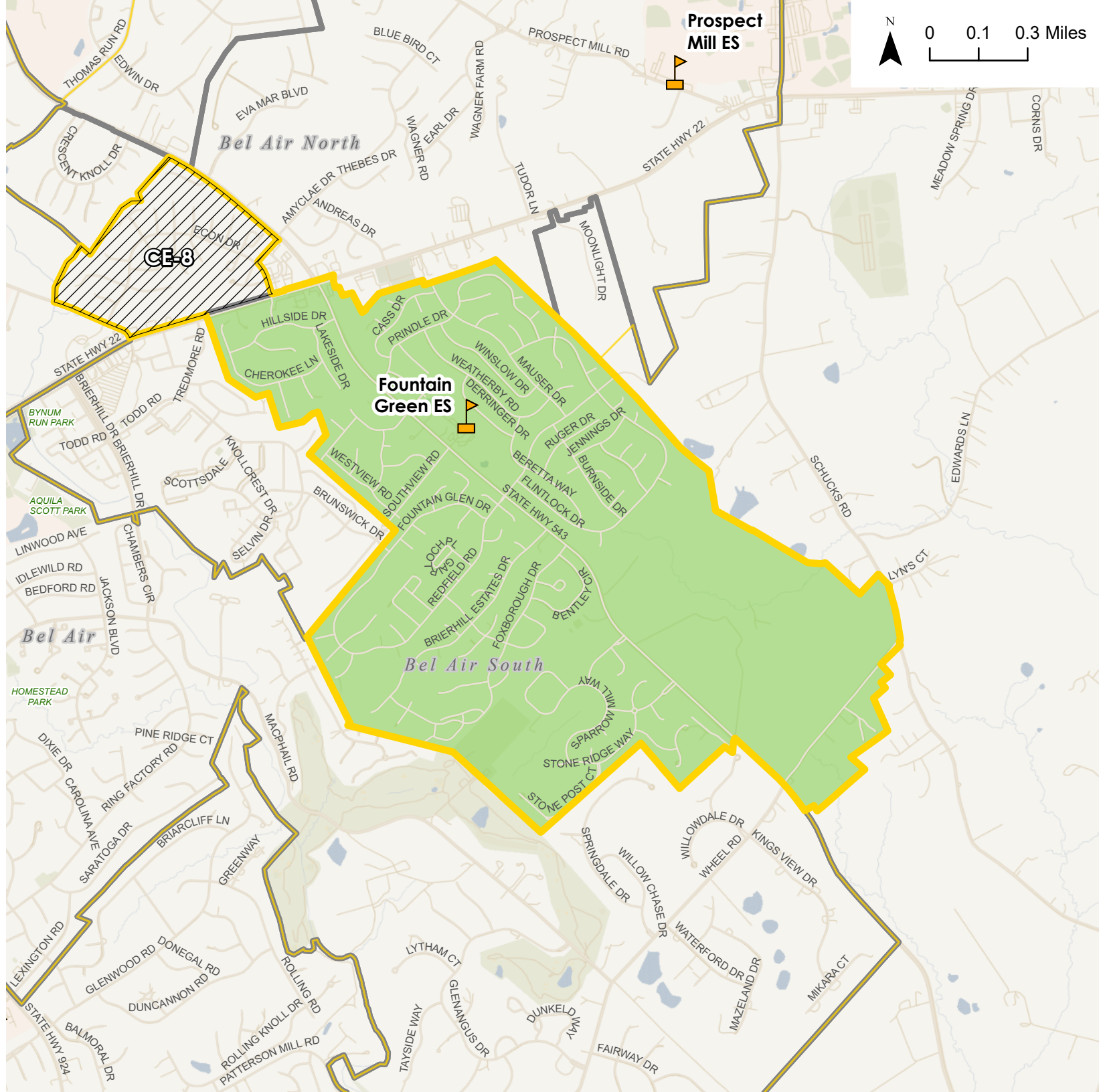
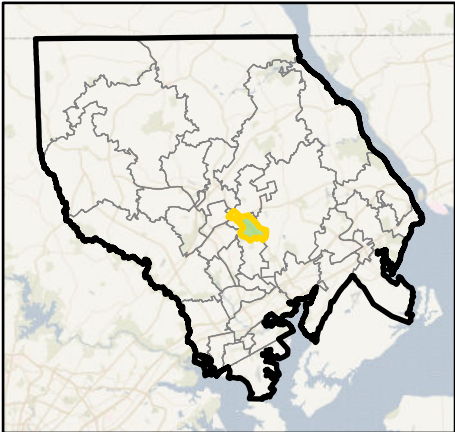
Advisory Team Elementary School Boundary Recommendation - Fountain Green ES

-  Elementary School
-  District Boundary
-  Advisory Team Elementary School Boundary
-  Recommendation for Fountain Green ES
-  Potential Change Area
- Current Configuration - Elementary Schools**
-  Fountain Green ES Current Attendance Area
-  Elementary School Attendance Area
-  Boundary Outline - Current Attendance Area




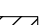




Potential Change Areas:

CE-8: From Prospect Mill ES to Fountain Green ES

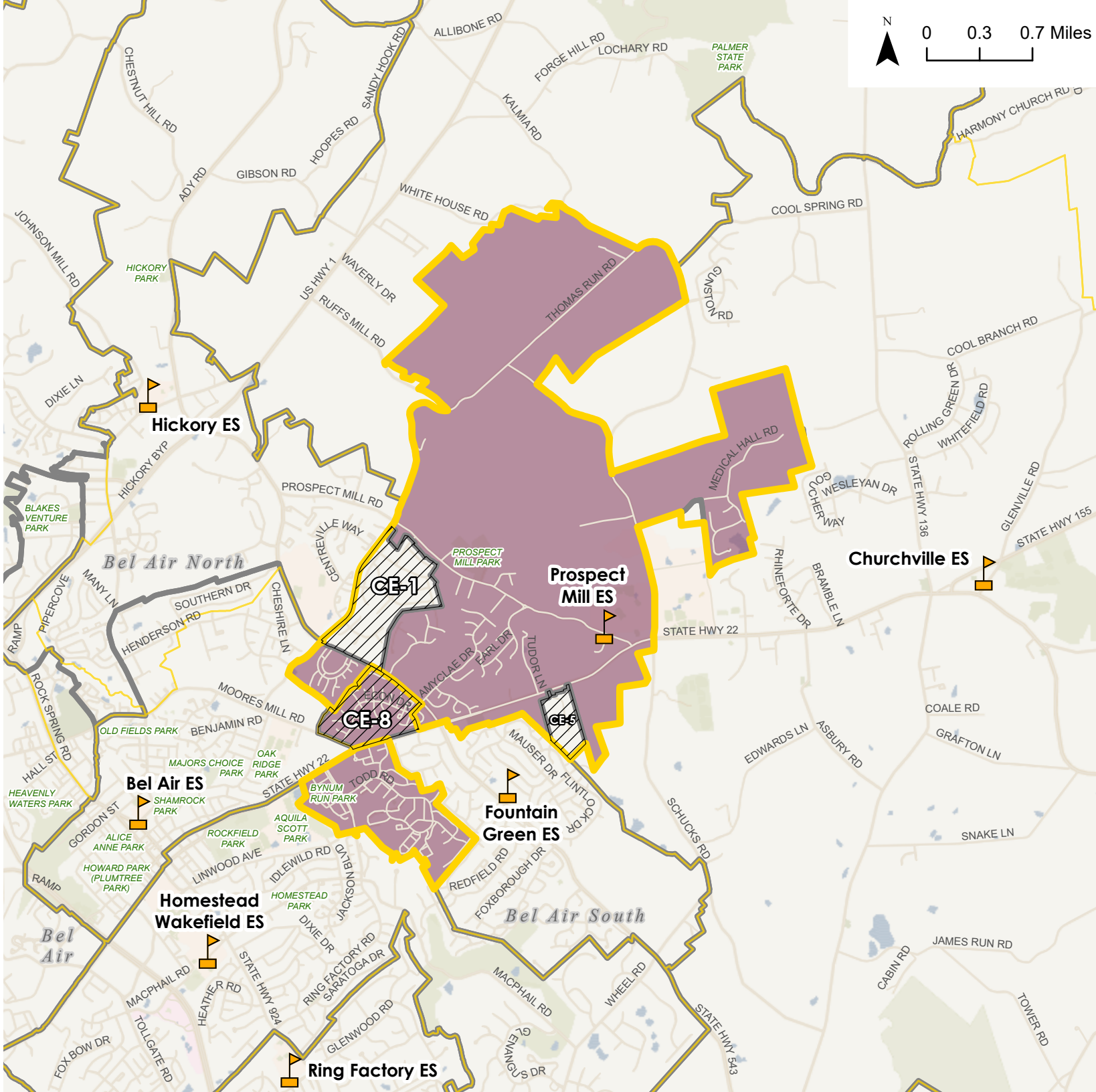
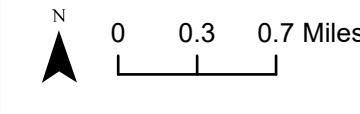
Overview Map



Advisory Team Elementary School Boundary Recommendation - Prospect Mill ES

-  Elementary School
 -  District Boundary
 -  Advisory Team Elementary School Boundary
 -  Recommendation for Prospect Mill ES
 -  Potential Change Area
- Current Configuration - Elementary Schools**
-  Prospect Mill ES Current Attendance Area
 -  Elementary School Attendance Area
 -  Boundary Outline - Current Attendance Area

Potential Change Areas:
 CE-8: From Prospect Mill ES to Fountain Green ES
 CE-5: From Churchville ES to Prospect Mill ES
 CE-1: From Hickory ES to Prospect Mill ES



Overview Map

