

Behavioral Health Report

November 1, 2022

Report Required by Section 7 of HB 1300 of 2020/Ch36 of 2021 as amended by HB1372/Ch55 of 2021 (MSAR#13741)

BOARD OF EDUCATION OF HARFORD COUNTY

Rachel Gauthier, *President* • Dr. Carol Mueller, *Vice President* • Dr. Joyce Herold
Dr. Roy Phillips • Patrice Ricciardi • Jansen Robinson • Dr. David Bauer
Ariane Kelly • Sonja Karwacki • Noa Blanken, *Student Member*

Sean W. Bulson, Ed. D., *Superintendent of Schools*



BLUEPRINT
for our students' future 

Vision: We will inspire and prepare each student to achieve success in college and career.

Mission: Each student will attain academic and personal success in a safe and caring environment that honors the diversity of our students and staff.

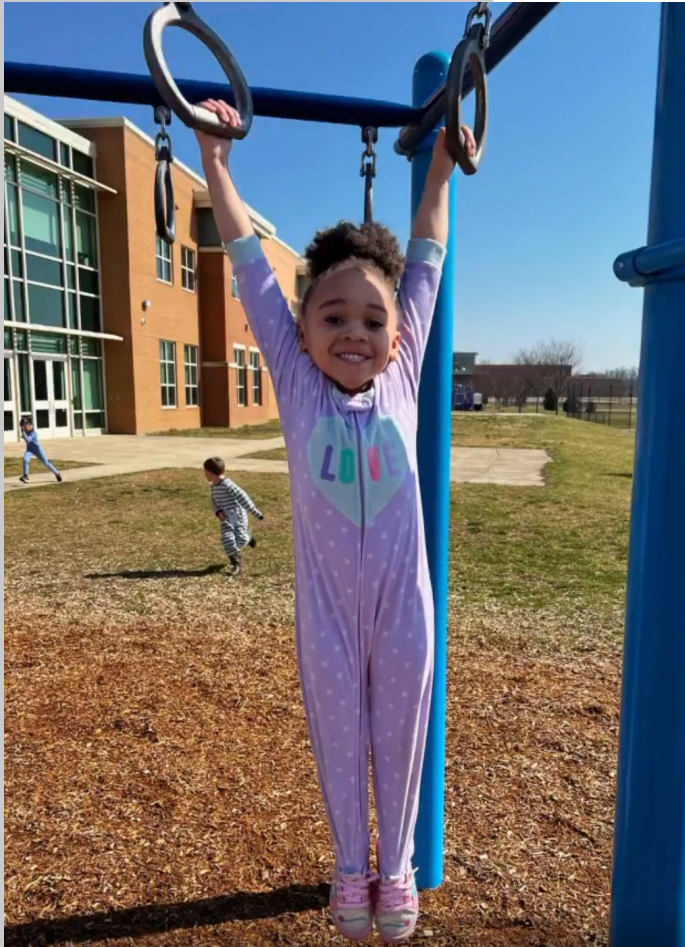
Core Values:

- We empower each student to achieve academic excellence.
- We create reciprocal relationships with families and members of the community.
 - We attract and retain highly skilled personnel.
 - We assure an efficient and effective organization.
 - We provide a safe and secure environment.

BOE Strategic Plan

- **Long Term Goal 1:** Prepare every student for success in postsecondary education and career.
- **Long Term Goal 2:** Engage families and the community to be partners in the education of our students.
- **Long Term Goal 3:** Hire and support highly effective staff who are committed to building their own professional capacity in order to increase student achievement.
- **Long Term Goal 4:** Provide safe, secure, and healthy learning environments that are conducive to effective teaching and learning, creativity and innovation.

Behavioral Health: A Plan to Support ALL HCPS Students



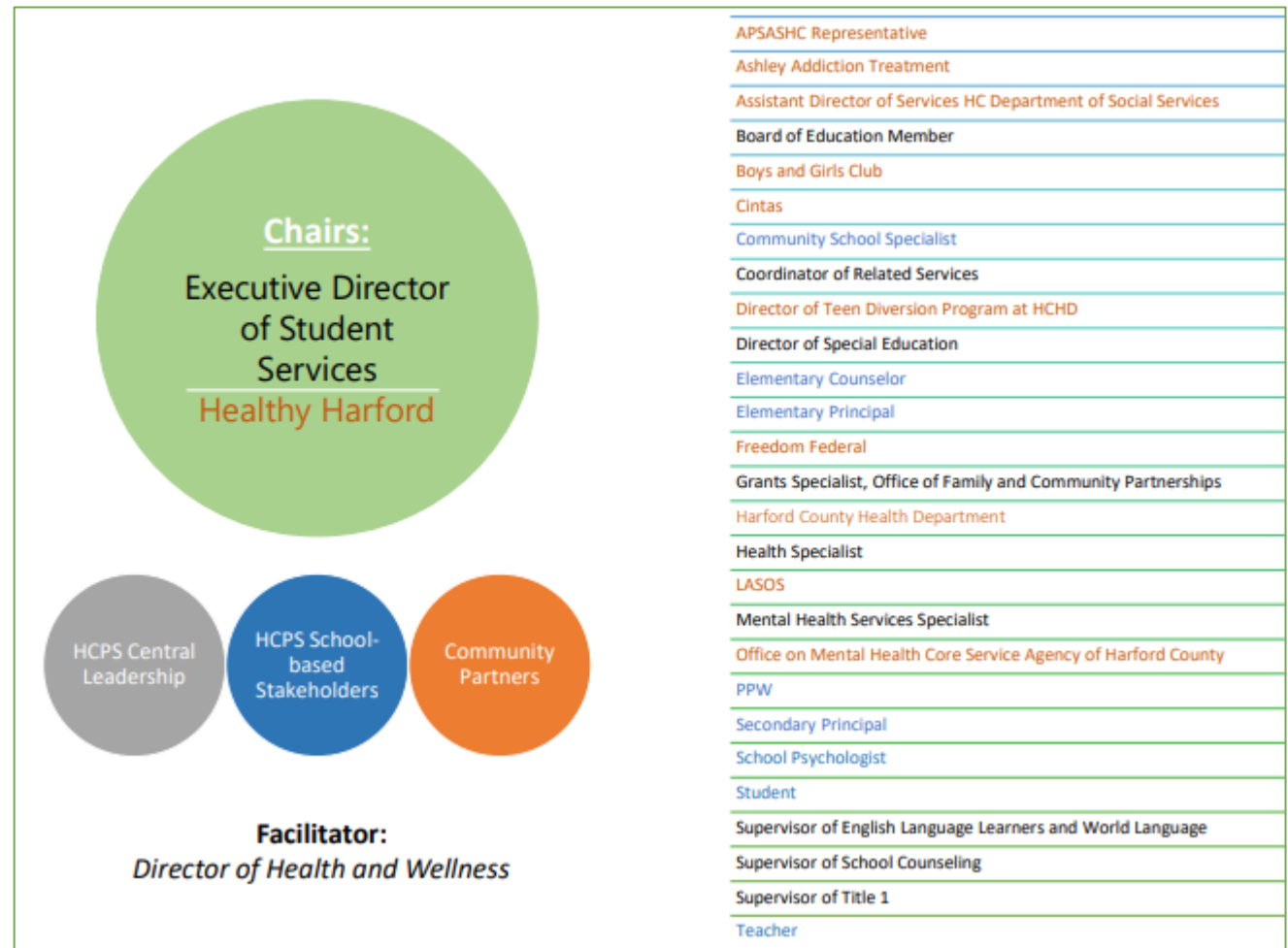
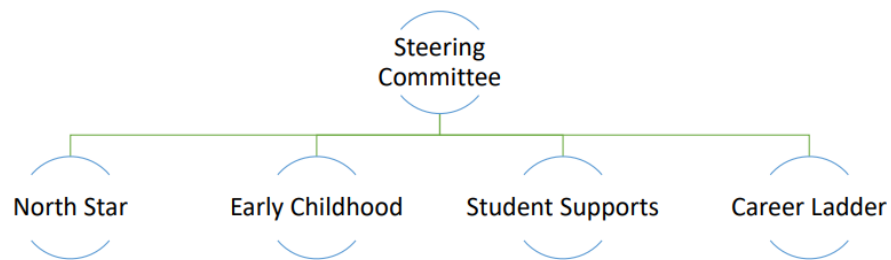
HCPS
health

BLUEPRINT
for our students' future

	<i>Page</i>
Collaborate with Community Stakeholders	4
Increase Access to Mental Health Services for ALL Students	5
Ensure ALL Students Receive Referrals to Services if Needed	6
Provide Frequent and Visible Access to Information	7
Provide Guidance Documents to Students, Families, and Staff	8
Strengthen Partnerships to Best Serve ALL Students	9
Increase HCPS Professional Staff to Support ALL Students	10
Equip Professional Staff with Knowledge	11
Expand the Reach of Trauma Informed Care and Teaching	12
Leverage Community Schools to Serve Students and Families	13
Assess the Social and Emotional Needs of Our Students	15
Engage Students in Action Planning	16
Move Students Forward through COVID-19 Recovery & Measure Success	17

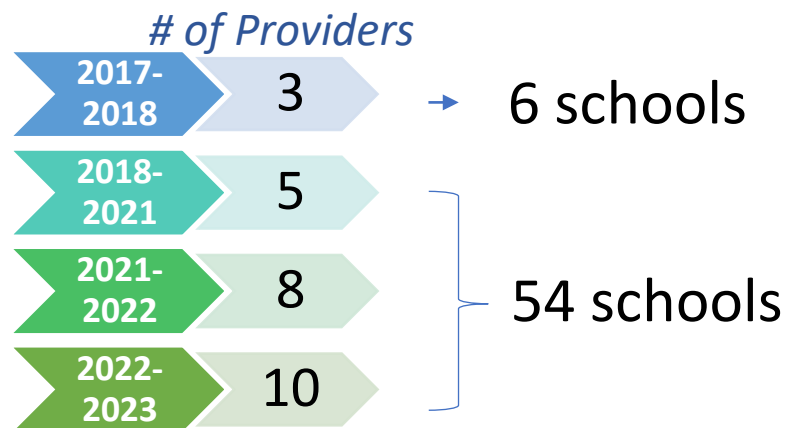
Collaborate with Community Stakeholders

HCPS has implemented a Blueprint committee structure that integrates community, student, school, and central leadership for the “Blueprint Student Supports Sub-Committee,” which reports to a diverse Steering Committee to ensure that many stakeholders and perspectives are part of HCPS planning for behavioral health and all Blueprint goals.



Increase Access to Mental Health Services for ALL Students

Private mental health providers
in schools district wide
serving around 1,000 students:



Since 2016, HCPS has partnered with outside mental health agencies to provide school-based mental health support to our students in grades K-12. Over the past eight years, we have continued to expand the availability of this resource in an effort to assist more students with mental health needs. We have grown this program from three providers in six schools in 2017, to having a provider in all schools in 2018. In 2021, we introduced two additional providers as available options and had two of our schools take on a second provider. For the 2022-23 school year, we expanded to ten outside agency providers servicing all of our comprehensive schools with six of our schools utilizing two providers. In any given year, we have approximately 1,000 students accessing this resource during the school day and receiving their mental health treatment from outside providers at their home school.

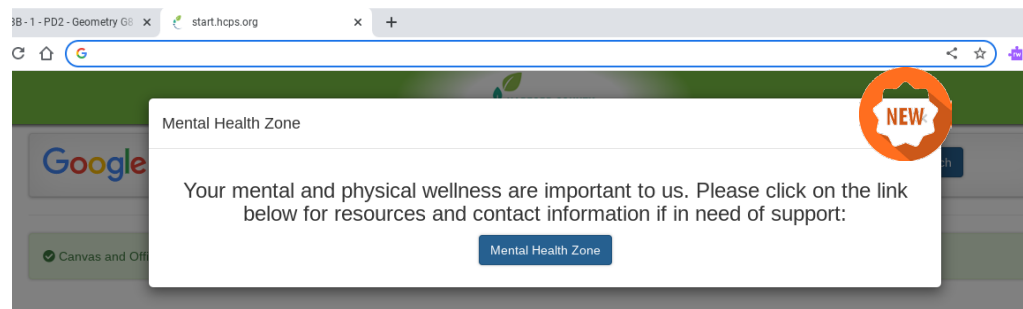


Ensure ALL Students Receive Referrals to Services if Needed

Every one of our schools, regardless of whether they have a school-based health center, have one or more school-based mental health providers with whom they partner and refer students to for counseling services. School staff are well-trained on the referral making process and communicate with parents/guardians whenever a referral is made. They also work closely with the provider and parents/guardians to coordinate initial intakes and keep all stakeholders up to date on the progress of the students involved.

Provide Frequent and Visible Access to Information

HCPS launched a new pop-up message which is installed on student devices when opening their web browser. When the link is clicked, students are taken to the HCPS Mental Health Zone for access to important support information.



Mental Health Zone

The Harford County Public Schools Mental Health Zone is dedicated to providing news, information, and resources relating to all things mental health.

Like us on Facebook, Twitter or Instagram @HCPSMHZone

Mental Health Resources

- Absence Resource
- Harford Crisis Center
- Mental Health Supports
- National Suicide Prevention Lifeline
- Parent Academy
- Virtual Calming Room

HELP FOR PHYSICAL, SEXUAL, EMOTIONAL ABUSE OR NEGLECT

Child protective services (CPS)*
(410)836-4700, press 1

*After hours, contact the Sheriff's Department (410)838-6600 📞

HELP WHEN YOU FEEL ANXIOUS OR DEPRESSED AND NEED SOMEONE TO TALK WITH TO STAY SAFE

Crisis Services:
Dial 2-1-1 or Harford Crisis Center

1-800-NEXT-STEP 📞
1-800-639-8763

TO REPORT THREATS OR SITUATIONS THAT PUT YOUR SAFETY, OR OTHERS' SAFETY, AT RISK

Safe Schools Maryland anonymous tip line:
1-833-MD-B-SAFE 📞
1-833-632-7233

Safe Schools Maryland Tip Line 📞

HELP IF YOU ARE THINKING ABOUT SUICIDE

Maryland Crisis Hotline
1-800-422-0009 📞 or 9-1-1*

National Suicide Prevention Lifeline Dial 9-8-8

*If in need of emergency life saving care

<https://www.hcps.org/students/MentalHealthZone.aspx>

Provide Guidance Documents to Students, Families, and Staff

In an effort to provide additional resources to families and provide better direction to our school-based staff, two guidance documents have been created. One is the “Mental Health Resources” one-pager which is provided to students and parents/guardians following any absence that was due to a mental health concern. The second is the “school-based Mental Health Considerations” document that is provided to school-based staff to help them understand the various nuances of the program and referral process.



MENTAL HEALTH RESOURCES

School-Based Resources

- School Counselor
- School Psychologist
- School Social Worker
- School Nurse
- Pupil Personnel Worker

HEALTH INSURANCE WEBSITE

Your health insurance site will have information about mental health providers who accept your insurance. If you are in need of health insurance please consult the MD Children's Health Insurance website at: <https://health.maryland.gov/mmcp/chp/pages/home.aspx>

OFFICE ON MENTAL HEALTH

The Harford County Office on Mental Health can assist with locating mental & behavioral health resources. (410) 803-8726 <https://harfordmentalhealth.org/>

EAP SERVICES

Your employer may offer an Employee Assistance Program that includes mental & behavioral health care.

LOCAL RESOURCES

The Klein Family Harford Crisis Center walk-in clinic: Hours: 7 days/week 9am-9pm 802 Baltimore Pike Bel Air 410-874-0711 OR The Harford County Mobile Crisis Team is available 24/7 at 1800NEXTSTEP

NATIONAL RESOURCES

Suicide Prevention Lifeline: 988
Crisis Text Line: 741741



FAMILY (CONT'D)

- WHAT TYPE OF INSURANCE DOES THE FAMILY HAVE?
- DOES YOUR SBMH PROVIDER ACCEPT EXISTING FAMILY INSURANCE?
- DOES THE FAMILY UNDERSTAND THE STUDENT WILL BE PULLED FROM CLASSES FOR SESSIONS?

WHY NOT SBMH?

- SIGNIFICANT TRAUMA HISTORY
- CHRONIC TRUANCY
- SIGNIFICANT ACADEMIC DIFFICULTIES
- FAMILY DOES NOT SUPPORT
- COMPLICATED GRIEF

STUDENT CONSIDERATIONS

- AGE (SBMH SEES STUDENTS 5 & UP)
- COGNITIVE ABILITY
- ATTENDANCE HISTORY
- MOTIVATION

IF NOT SBMH, THEN WHAT?

- CONFER W/HCPS MENTAL HEALTH SPECIALIST
- COMMUNITY-BASED OUTPATIENT MENTAL HEALTH OR PRIVATE PROVIDER
- CASE MANAGEMENT
- LCT REFERRAL

CONT'D

- HARFORD COUNTY OFFICE ON MENTAL HEALTH
- DEPARTMENT OF SOCIAL SERVICES
- HARFORD COUNTY OFFICE OF COMMUNITY SERVICES
- MD COALITION OF FAMILIES



Strengthen Partnerships to Best Serve ALL Students

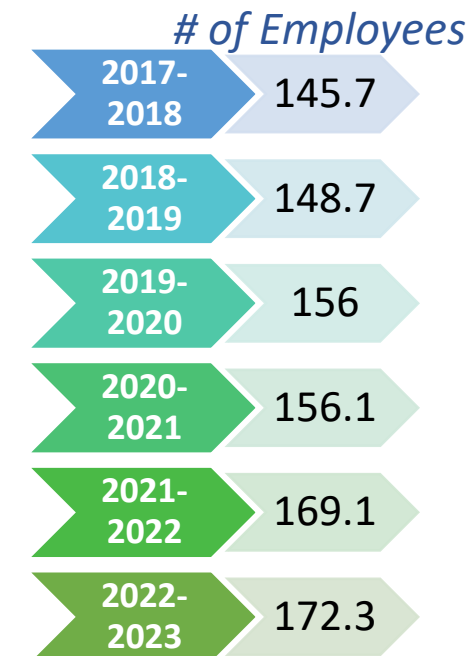
In response to the mental health needs of our students, HCPS has developed partnerships with community organizations to strengthen our delivery of services to students. Staff have quarterly meetings with school-based Mental Health providers, monthly data updates from the Klein Family Crisis Center regarding youth visits to their clinic, and monthly meetings with the Harford Crisis Response Team.



Increase HCPS Professional Staff to Support ALL Students

HCPS continues to add student support services staff to our schools. We have increased staff in the areas of school psychologists, school counselors, pupil personnel workers, nurses, and social workers. We have also added a Director of Health and Wellness who works in close partnership with our Behavioral Health Specialist to oversee and direct all of our mental and physical wellness initiatives, programming, and staff. We have added many staff to schools through the funding provided by the Concentration of Poverty grants. These identified schools used their behavioral needs assessments to determine the needs of their students and community to identify the necessary staff and programs that were required to address these needs.

HCPS employed counselors, social workers, psychologists, and mental health specialists:



Equip Professional Staff with Knowledge

HCPS is committed to equipping our staff with training in behavioral health. To date, the following trainings have been provided to HCPS staff and community members:

- Youth Mental Health First Aid
- Question, Persuade, Refer (QPR)
- Trauma Informed Practices
- Handle With Care
- Adverse Childhood Experiences (ACES)
- The Brain Architecture Game

New training for the 2022-2023 school year:

- Healthy Outcomes from Positive Experiences (H.O.P.E.)

HCPS has a robust Handle with Care program in Collaboration with Harford County Law Enforcement Agencies.

The "Handle with Care" Model:

If a law enforcement officer encounters a child during a call, that child's name and three words, **HANDLE WITH CARE**, are forwarded to the school/child care agency before the school bell rings the next day. The school implements individual, class and whole school trauma-sensitive curricula so that traumatized children are "Handled With Care". If a child needs more intervention, on-site trauma-focused mental healthcare is available at the school.



HANDLE WITH CARE MARYLAND
PROTECT • HEAL • THRIVE

Expand the Reach of Trauma Informed Care and Teaching

8 Social Workers earned Level I Trauma Treatment Certification from the Ferentz Institute.

Beginning in the Summer of 2022, Bus Contractors and Drivers participated in the Brain Architecture Game. This training was expanded to ESP's, IA's, and Media Technicians at the start of the school year.

HCPS will have a cohort of 16 staff participating in H.O.P.E. training to become facilitators, starting in November 2022. Facilitators will provide training to HCPS staff, parents/guardians, and community members.



Bakerfield Elementary School

Deerfield Elementary and
Edgewood Elementary schools

Edgewood Middle School

George D. Lisby Elementary
School at Hillsdale

Hall's Cross Roads Elementary School

Joppatowne High School

Magnolia Elementary and
Magnolia Middle schools

Old Post Road Elementary School

Riverside Elementary School

Leverage Community Schools to Serve Students and Families

Community schools develop and utilize partnerships to connect the school, students, families, and surrounding community to the resources needed in order to thrive. At its core, the community school strategy is deeply rooted in equity; it highlights the assets in traditionally underserved communities and leverages additional partnerships to provide essential services. Community schools work to provide access to health services, mental health support, academic enrichment, out-of-school time programming, crisis support, adult education classes, leadership development, and more.

Leverage Community Schools to Serve Students and Families

Our community schools have conducted needs assessments that prioritize the expansion of services to our communities. Individual community school action plans are required following the needs assessments by a School Level Steering Committee, Community School Specialist, Identification of Partners, and Targeted Strategies. Example action items include: *Positive Behavior Management Workshops, Mental Health Fairs, Home Visits, Social Emotional PD for Teachers, and Mental Health Information Nights.*

Top identified needs:

- Mental Health and Social Emotional Health Supports
- Before and After School/Out-of-School-Time Programs
- Supports to Combat Chronic Absenteeism
- Financial Literacy and Future Planning
- Safe Recreational Spaces

HCPS
health

BLUEPRINT
for our students' future



Assess the Social Emotional Needs of our Students

In 2022, Wellness Needs Assessments will be given to 34,000+ students (Grades 2-12)

To develop interventions to support the presenting needs of all students, and to provide a multi-tiered system of support

In 2023, the Wellness Needs Assessment will include the mental and physical health needs assessment

Navigation	
Social Skills GR 1-2	
Conflict Resolution GR 1-2	
Feelings GR 1-2	
Learning Habits GR 1-2	
Social Skills GR 3-5	
Conflict Resolution GR 3-5	
Feelings GR 3-5	
Learning Habits I - GR 3-5	
Learning Habits II - GR 3-5	
Social Needs - GR 6-12	
Emotional Needs - GR 6-12	
Organization/Study Skills - GR 6-12	
School Resources - GR 6-12	
Contributing Factors - GR 6-12	
School Culture - GR 6-12	
Comments - GR 6-12 & Data Download	

2022-2023 Wellness Needs Assessment

Overview

This dashboard, designed by the Department of Research and Program Evaluation in collaboration with the Department of Student Services, presents the results and analysis of the 2022-2023 Wellness Needs Assessment.

Applications

School and district leaders can use the results contained in this dashboard to develop interventions to support the presenting needs of students. The results can inform school and district planning efforts such as prioritization of supports for students, families, and teachers.

Next Steps

Based on student's feedback, school and district leaders should collaborate with mental health specialists to provide multi-tiered system of supports, including tier one, tier two and tier three interventions that support the presenting needs of our students.

Filters

Users are able to filter the data by a variety of district and respondent-level characteristics.

Note

School Counselors should click the "**Comments - GR 6-12 & Data Download**" link to view the link to download an Excel File containing responses and comments for individual students.

Please also use the page view (**Navigation**) on the left to navigate to the topic you want to explore. To return to this navigation page, click on the "**Go Back to Main**" link.

At A Glance

18.06K
Total # of Respondents
8515
Total # of Elementary Respondents
5891
Total # of Middle School Respondents
3655
Total # of High School Respondents

Engage Students in Action Planning

New this year, HCPS partnered with Towson University in Northeast and gathered student representatives from all middle and high schools to participate in action planning for behavioral health. *“SPARK-A day for Students: Plan, Activate, Reflect and Kickstart Advocacy in their schools”*

In this inaugural effort, students heard presentations on social media impacts, mental health advocacy, ripple effects of addiction, and healthy relationships. After the sessions, the groups engaged in work sessions to reflect and begin team planning using an advocacy planning guide. Each school group developed action plans on the needs of their school community. Plans included campaigns, ways to create awareness, ways to generate engagement, enlistment of fellow students, and thoughtful approaches to sustain momentum.

Students were encouraged to network with the community partners in attendance. We had the following community agencies in attendance with resource tables and staff available to students: Office of Drug Control Policy, Bridge Program, Addictions Connections Resource, Klein's Crisis Center, Office on Mental Health, and Clubhouse by Ashley.





Move Students Forward through COVID-19 Recovery

The Wellness Needs Assessment has questions specifically related to needs that have become apparent as a result of the COVID-19 pandemic. The data gathered from these needs assessments will assist us in providing a targeted approach to these specific concerns and we will use attendance, referral, discipline, and school counselor office visit data to assess the effectiveness.



Measuring Success

HCPS will use the following metrics to evaluate the effectiveness of our behavioral health services: attendance data, discipline data, Suicide Ideation Reports, visits to the school counselor's office, calls to Mobile Crisis, seclusion and restraint data, reintegration meeting data (students returning from hospitalization), Handle With Care data, and Student Support Team referrals. Many of these metrics are in line with the data that each LEA are required to submit to MSDE annually.

HCPS thanks all our staff, families, community partners, and students committed to improving behavioral health services to all.



BLUEPRINT
for our students' future 🌱



The Board of Education of Harford County Public does not discriminate on the basis of age, ancestry/national origin, color, disability, pregnancy, gender identity/expression, marital status, race, religion, sex or sexual orientation in matters affecting employment or in providing access to programs and activities and provides equal access to the Boy Scouts and other designated youth groups.

In accordance with the requirements of Title IX of the Education Amendments of 1972 (20 U.S.C. §1681, et seq.), Harford County Public Schools does not discriminate on the basis of sex in any of its programs or activities or with regard to employment. Inquiries about the application of Title IX, and its implementing regulations to Harford County Public Schools may be referred to Renee McGlothlin, Harford County Public Schools Title IX Coordinator, by mail to 102 S. Hickory Avenue, Bel Air, Maryland 21014, or by telephone to 410-809-6087 or by email to Renee.McGlothlin@hcps.org or the Assistant Secretary for the Office of Civil Rights in the United States Department of Education by mail to 400 Maryland Avenue, SW, Washington, DC 20202 or by telephone 1-800-421-3481, or both.