

ADDENDUM NO. 2

DATE: July 24, 2019

ARCHITECT: Smolen ■ Emr ■ Ilkovitch Architects
9211 Corporate Blvd., Suite 340
Rockville, Maryland 20850
Phone: (301) 770-0177
Fax: (301) 330-3224

OWNER: Harford County Public Schools

PROJECT: George D Lisby Elementary School at Hillsdale – Portable Classroom Relocation
Aberdeen, Maryland

TO: All Prospective Bidders

The following changes are made a part of the Drawings and Specifications for the subject project, dated July 9, 2019. Receipt of this Addendum is to be acknowledged, in the space provided in the Bid Form. Failure to do so may subject the Bid to be considered as non-responsive.

A. GENERAL CLARIFICATIONS

1. The bid date remains unchanged: sealed and complete bids must be received by 2:00pm on Wednesday, July 29, 2019. Bids are to be received at Harford County Public Schools Administration Building, Main Lobby, 102 South Hickory Avenue, Bel Air, Maryland.

B. RFI RESPONSES

Responses are provided below each question in **red**.

1. Belair E.S Modular Unit E was missing the Fire Alarm Panel. There was electric hanging out of the wall and the manuals for the panel were setting on the shelf. It seems to be the intent to reuse existing fire alarm panel and devices. Did the school remove the panel and will the panel be given to the contractor to reinstall or will a new fire alarm panel be required?
Response: HCPS will provide a fire alarm panel to serve the units at George Lisby ES.
2. Belair E.S. There are 2 modulares not being relocated that are on site. The electrical shed alongside of the modulares has disconnects with disconnected and damaged wires. There are no feeds from the electrical shed to the two modulares and there is electric power to the units. Are these units feed from the electrical distribution panel we are to demo? We checked the breakers in the distribution panel and there were no extra breakers or any labels calling out feeding the two modulares staying. Where do the two modulares staying get there electrical fed from? If they are feed form the distribution panel being demoed how will they get power? Are we responsible for maintaining power to the two modulares staying? If so we will need direction on where the feed will be coming from.
Response: The two existing units to remain at Bel Air ES are fed from the same BGE transformer as the group of 7 units to be moved to George Lisby ES, but they are not connected to the distribution panel to be moved with the units.

3. Falston H.S. – The modular being relocated has the fire alarm system in it that feeds the other modulares staying. Does the fire alarm panel and wiring need to be relocated and connected to the modulares staying? Please advise

Response: The existing fire alarm panel at Fallston HS shall be relocated to one of the existing units to remain as directed by HCPS.

C. CHANGES TO SPECIFICATIONS

1. No changes.

D. CHANGES TO DRAWINGS

1. ARCHITECTURAL DRAWINGS

- a) All unit footings which occur over grassy areas shall be CHANGED to concrete footings in lieu of ABS pads. A plan and detail for concrete footings has been provided by this addendum as 2/A706. The contractor shall coordinate the foundation plans 1/A706 and 2/A706 to determine the size and type of each footing according to its location.

2. ELECTRICAL DRAWINGS

- a) No changes.

E. ATTACHMENTS

1. ADDENDUM SPECIFICATIONS

AD-A1 Revised Foundation Plan
AD-A2 Concrete Foundation Plan
AD-A3 Concrete Foundation Detail

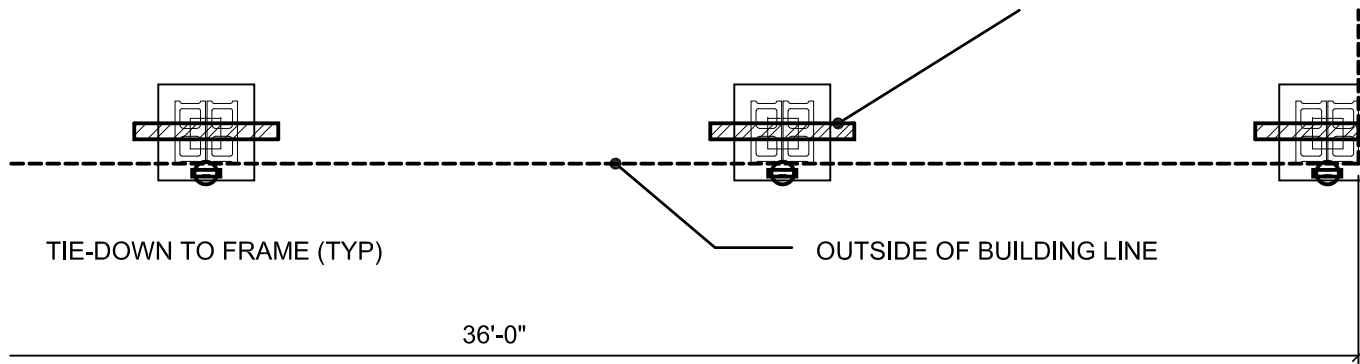
2. ADDENDUM DRAWINGS

No addendum drawings

3. OTHER

No other items

END OF ADDENDUM NO. 2
Except for attachments listed above



THIS DETAIL APPLIES TO THE FOLLOWING UNITS:

7 UNITS FROM BEL AIR ELEMENTARY SCHOOL
 1 UNIT FROM FALLSTON HIGH SCHOOL

AREAS ON HARD SURFACE ONLY


1
 A706

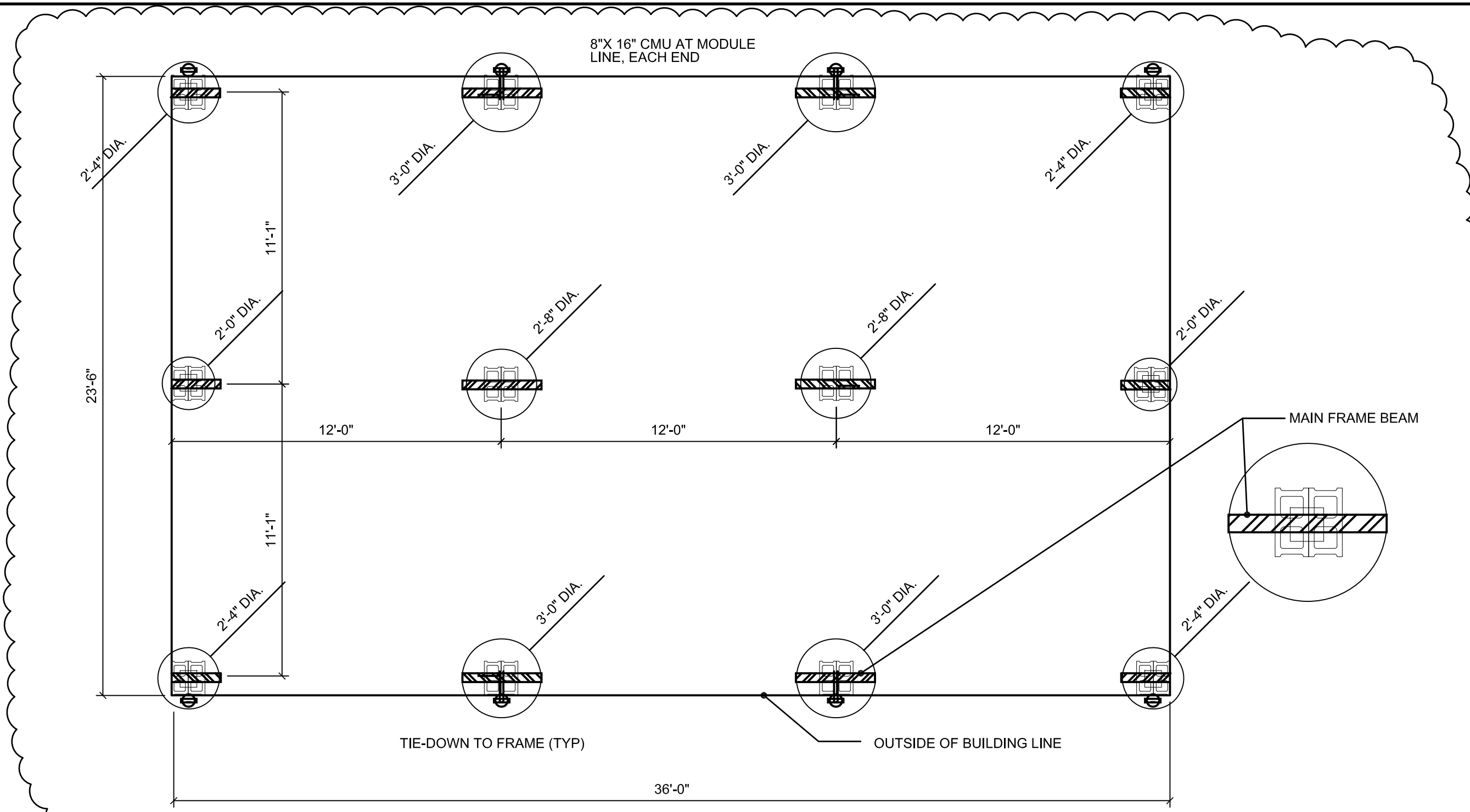
TYPICAL FOUNDATION DETAILS

FOR ABS PADS

SCALE: NOT TO SCALE

ONLY INFORMATION CLOUDED HAS BEEN CHANGED. SOME INFORMATION HAS BEEN OMITTED FOR CLARITY ONLY. THIS DRAWING SHOULD BE USED IN CONJUNCTION WITH THE CONSTRUCTION DOCUMENTS.

 SMOLEN • EMR • ILKOVITCH ARCHITECTS	GEORGE D. LISBY ELEM. SCHOOL PORTABLE CLASSROOM RELOCATION HARFORD COUNTY PUBLIC SCHOOLS	DATE: 7/24/19
		SCALE: AS NOTED
9211 CORPORATE BLVD, SUITE 340 ROCKVILLE, MD 20850 301-770-0177(P) 301-330-3224(F)	REVISED FOUNDATION PLAN	AD-A1



THIS DETAIL APPLIES TO THE FOLLOWING UNITS:

- 7 UNITS FROM BEL AIR ELEMENTARY SCHOOL
- 1 UNIT FROM FALLSTON HIGH SCHOOL

AREAS ON GRASS/EARTH ONLY

ONLY INFORMATION CLOUDED HAS BEEN CHANGED. SOME INFORMATION HAS BEEN OMITTED FOR CLARITY ONLY. THIS DRAWING SHOULD BE USED IN CONJUNCTION WITH THE CONSTRUCTION DOCUMENTS.



GEORGE D. LISBY ELEM. SCHOOL
 PORTABLE CLASSROOM RELOCATION
 HARFORD COUNTY PUBLIC SCHOOLS

DATE: 7/24/19
 SCALE: AS NOTED

9211 CORPORATE BLVD, SUITE 340
 ROCKVILLE, MD 20850
 301-770-0177(P) 301-330-3224(F)

CONCRETE FOUNDATION PLAN

AD-A2

2
 A706

TYPICAL FOUNDATION DETAILS FOR GRASS AREAS

SCALE: NOT TO SCALE

