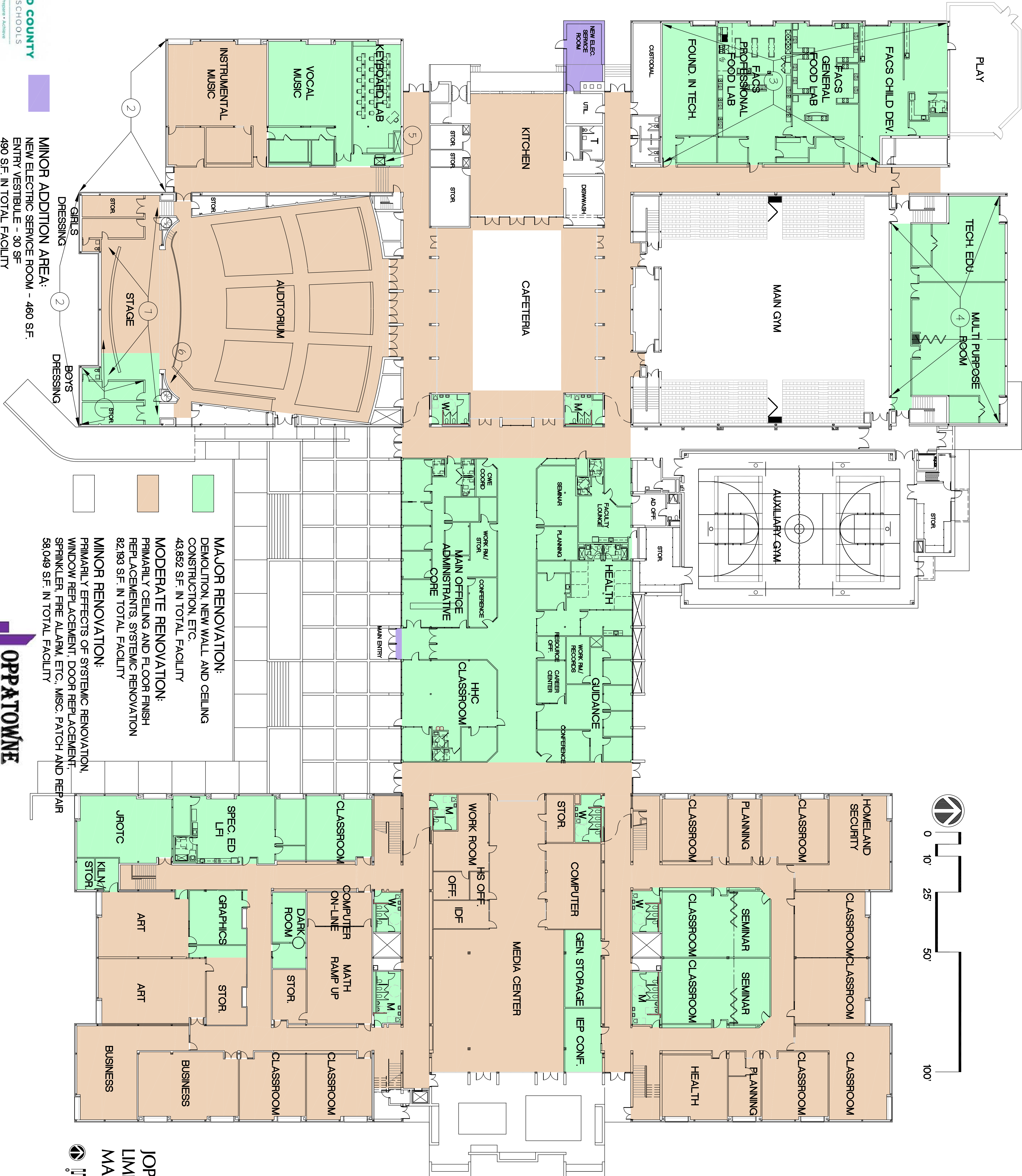


MINOR ADDITION AREA:
NEW ELECTRIC SERVICE ROOM - 460 S.F.
ENTRY VESTIBULE - 30 SF
490 S.F. IN TOTAL FACILITY



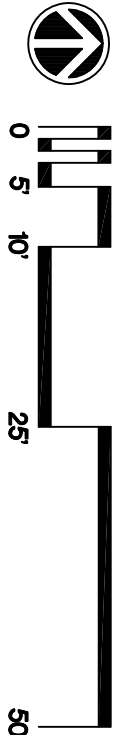
SCOPE NOTES:

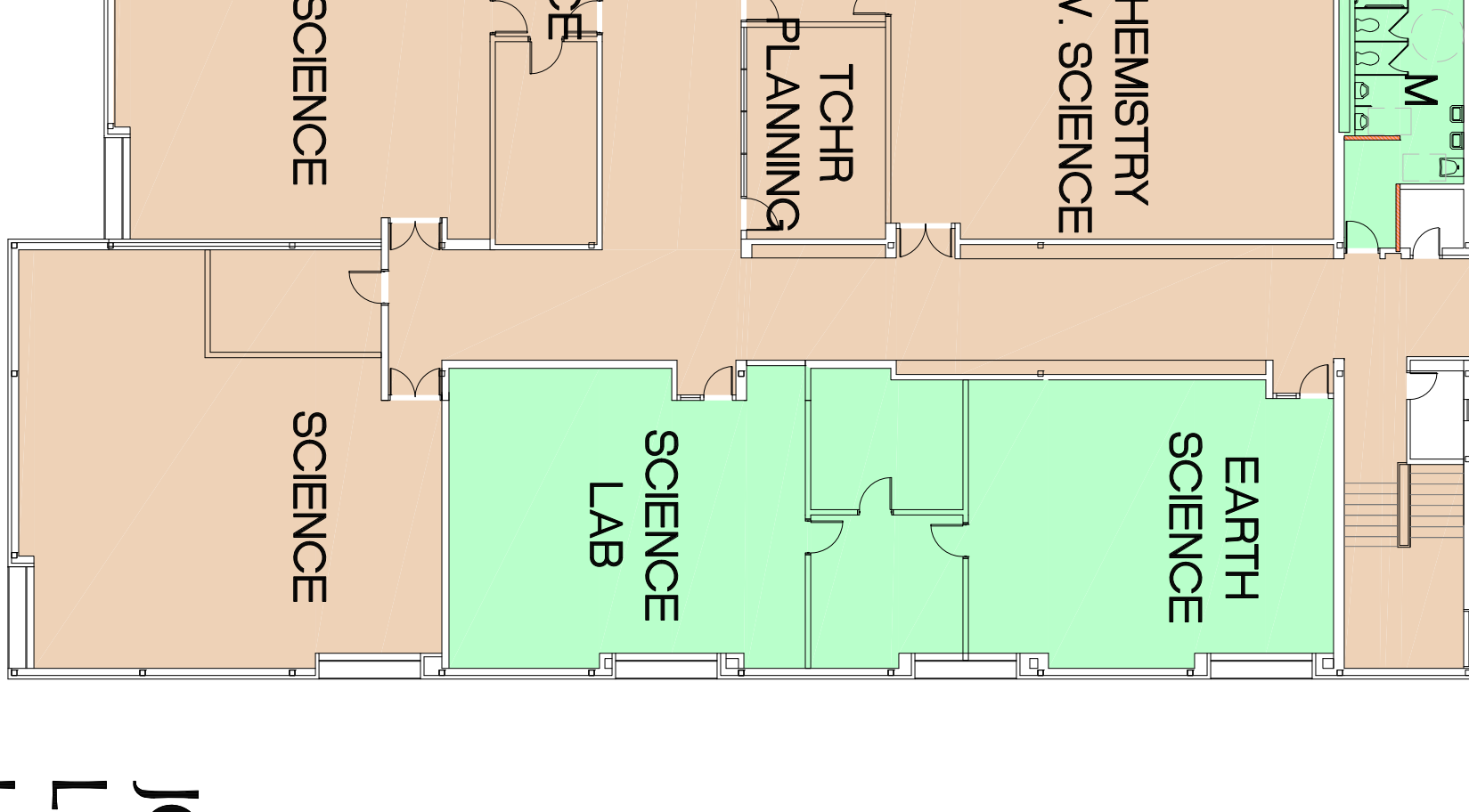
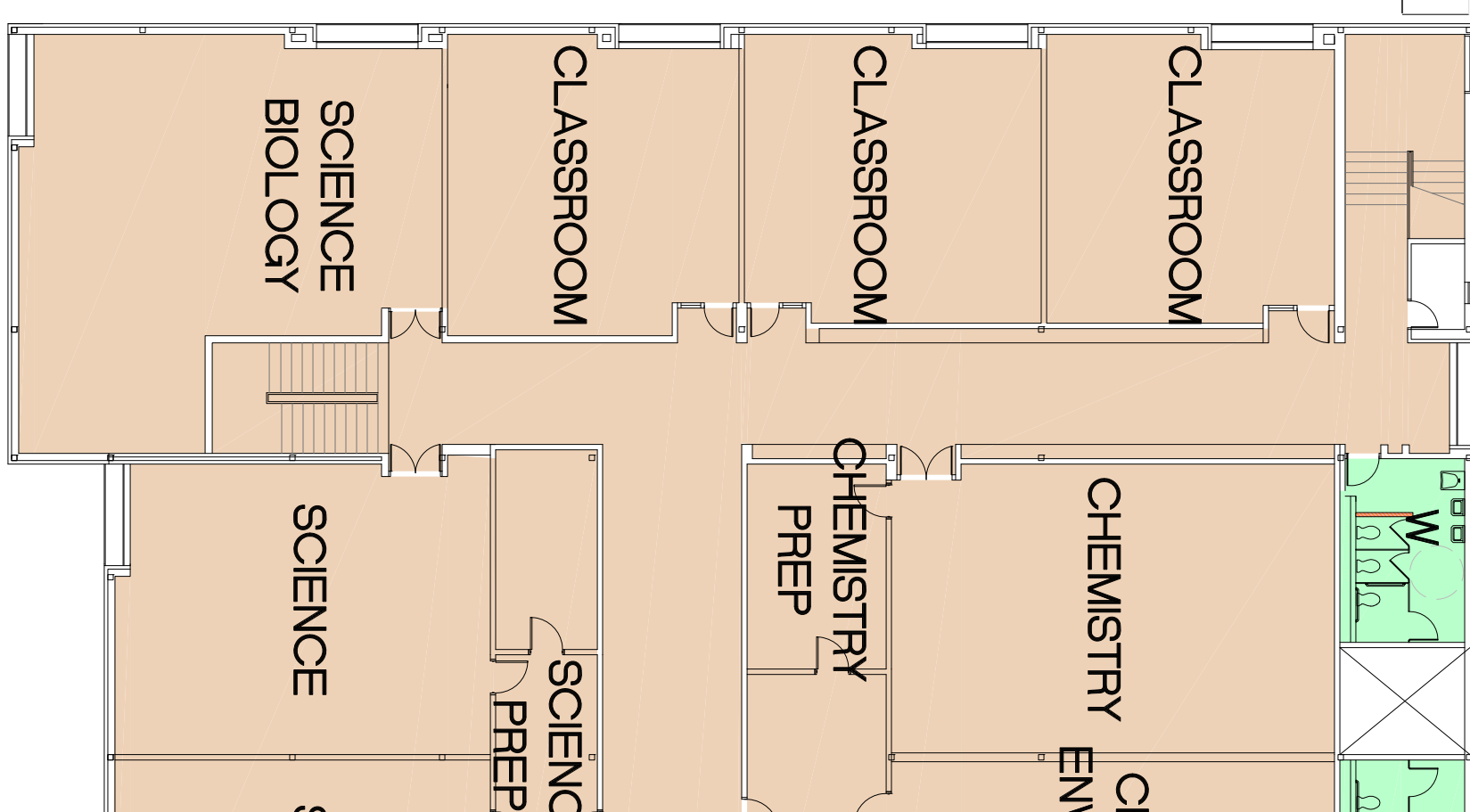
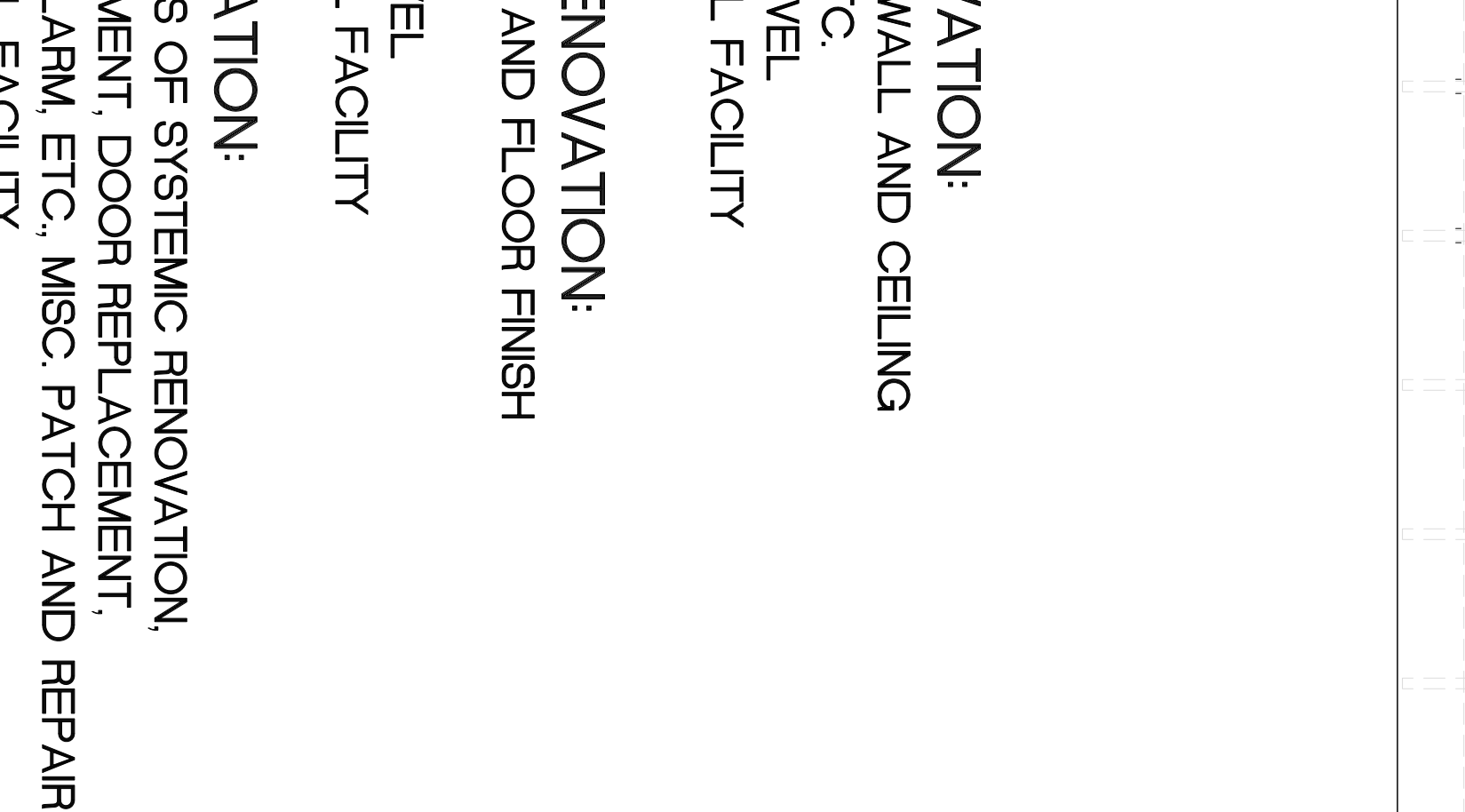
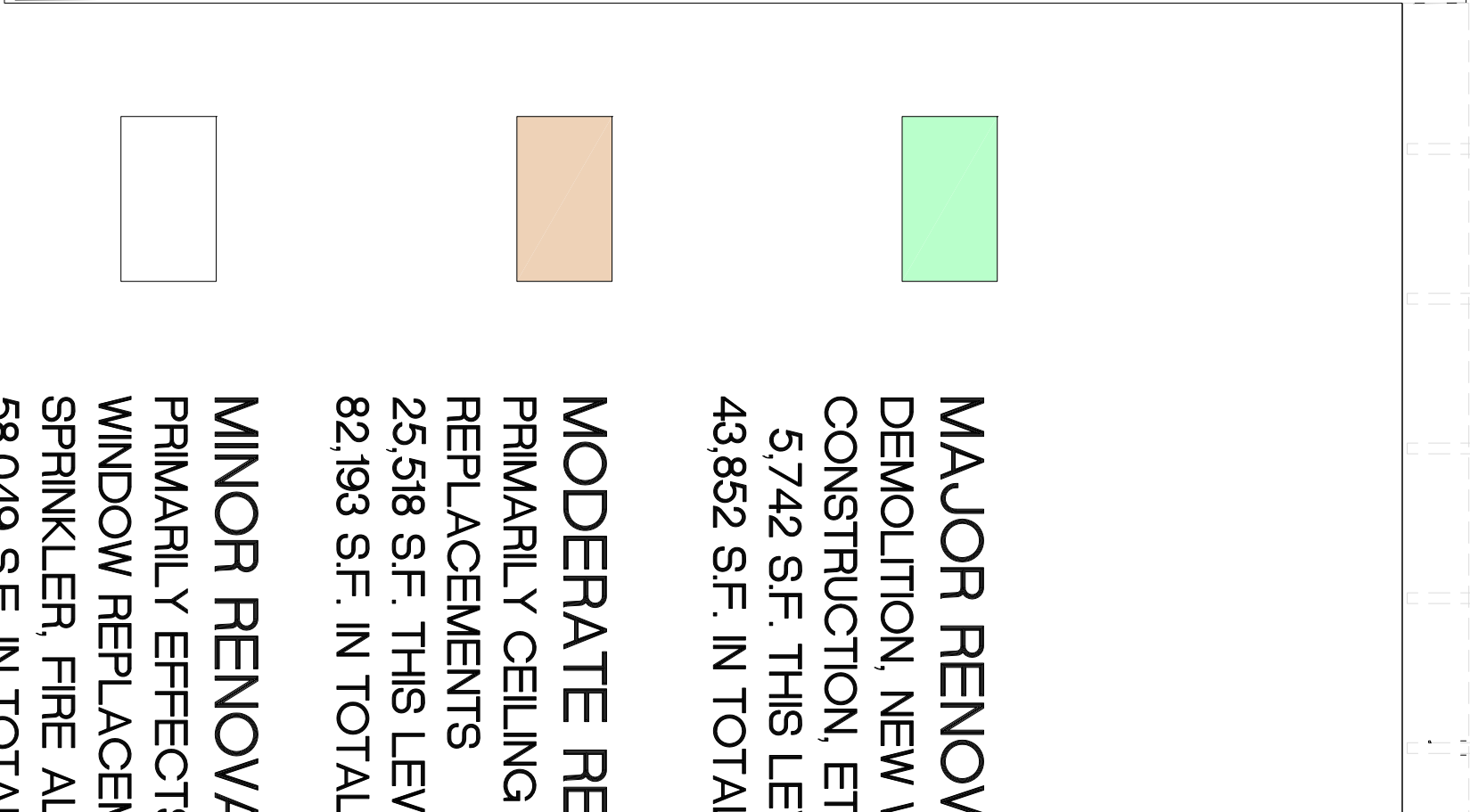
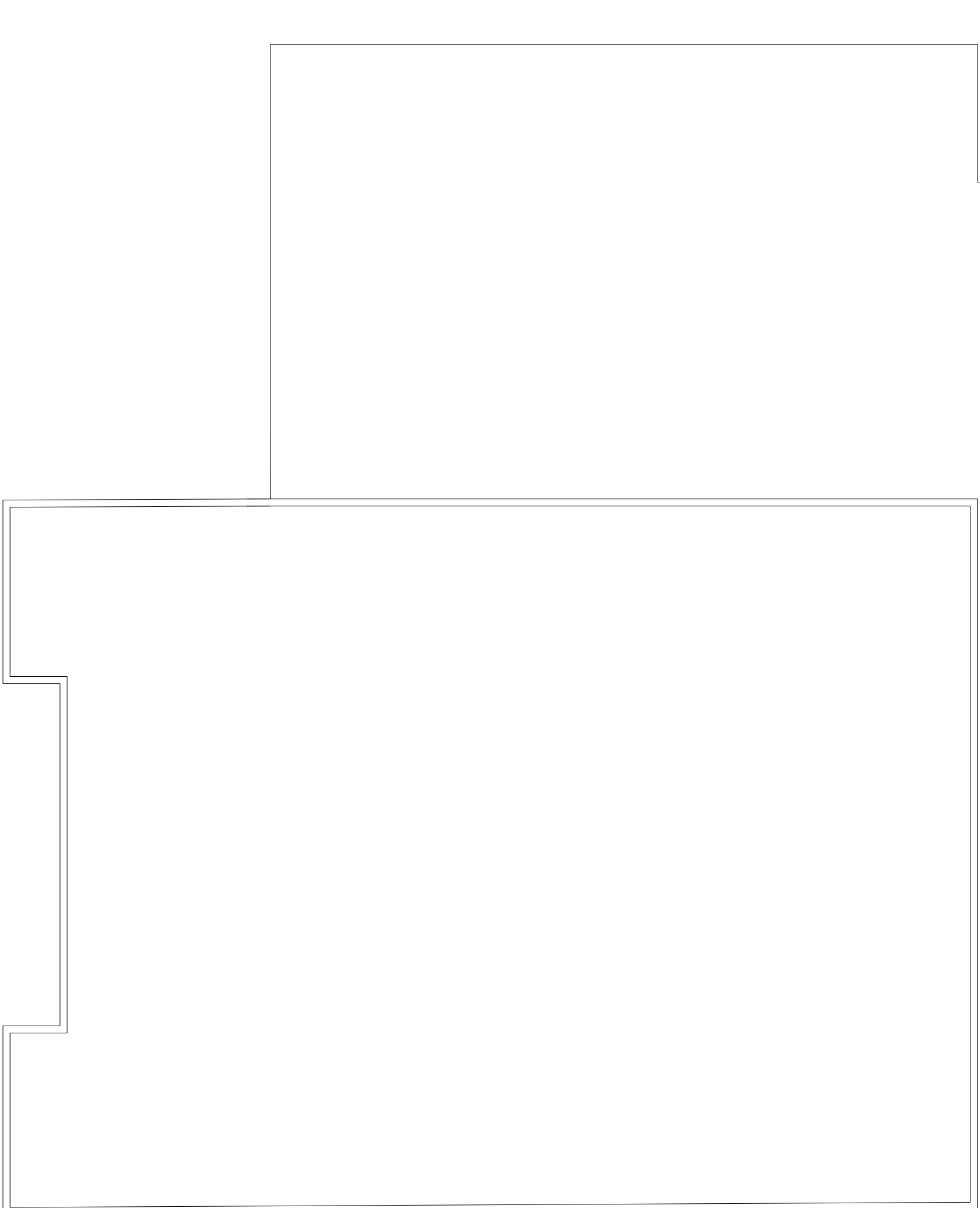
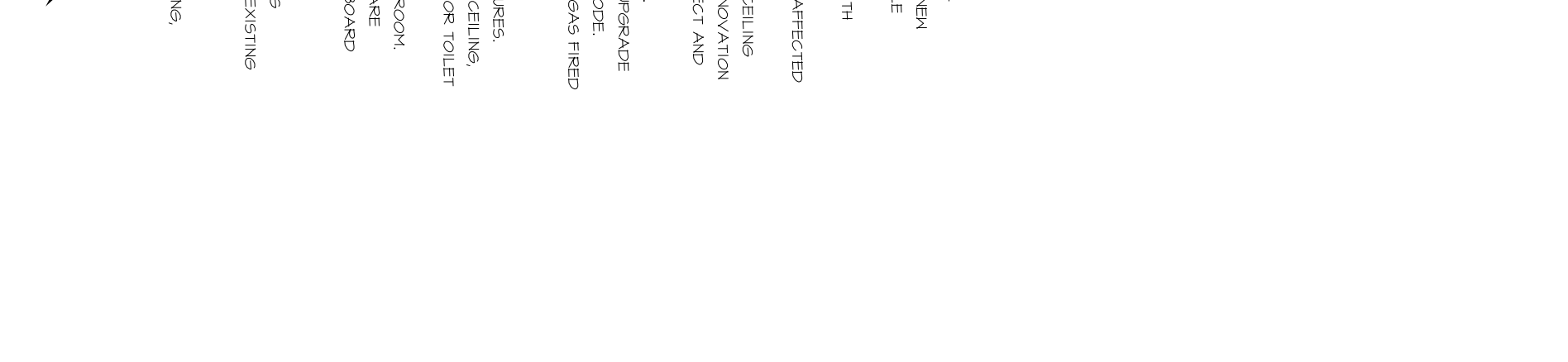
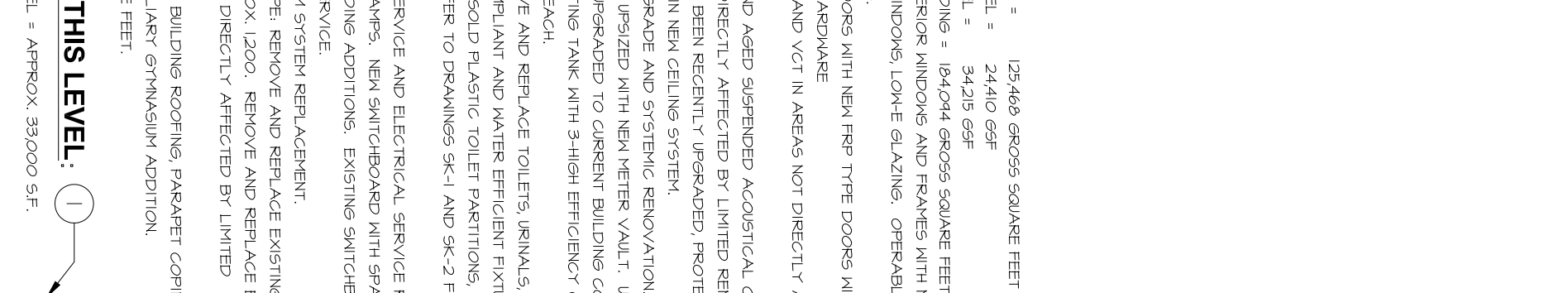
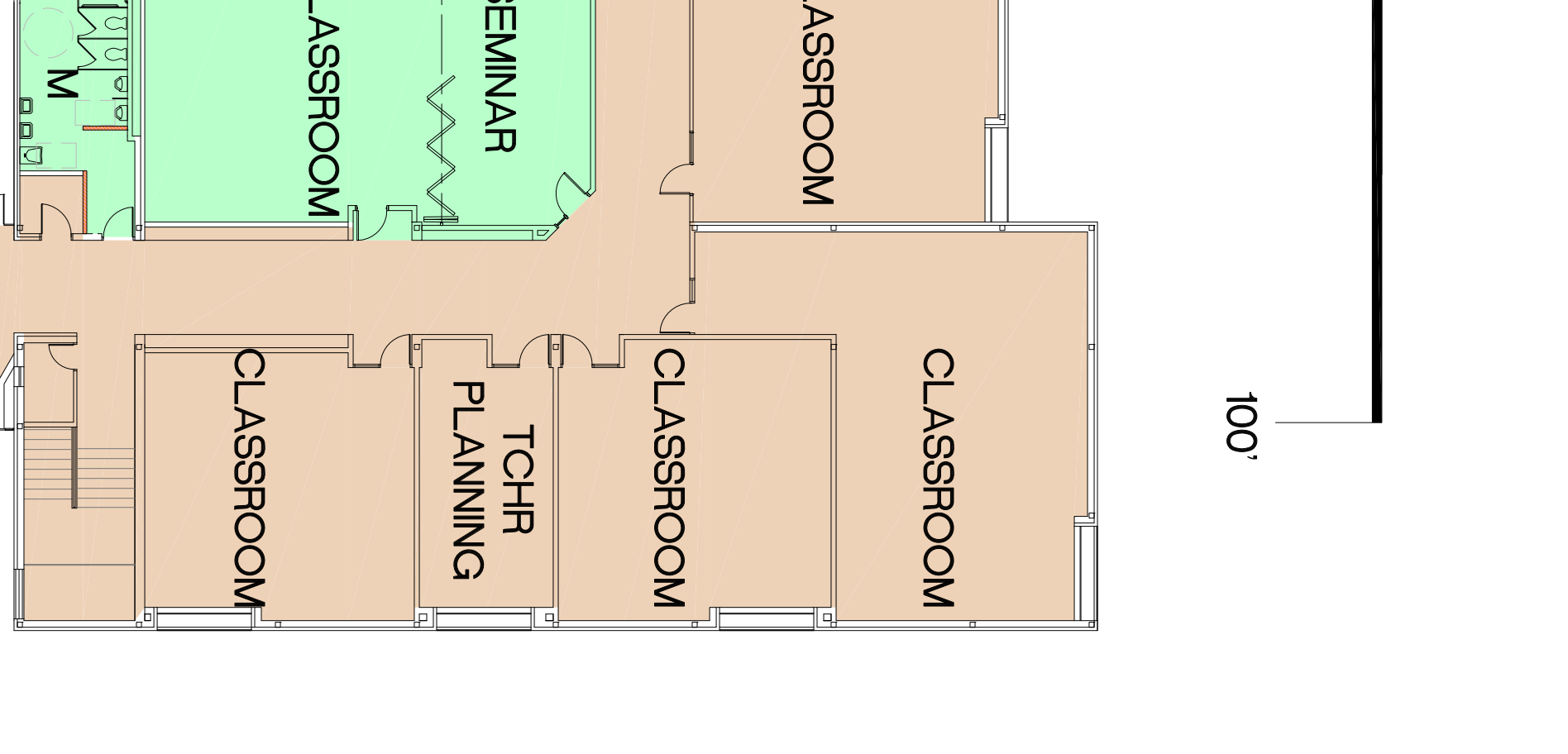
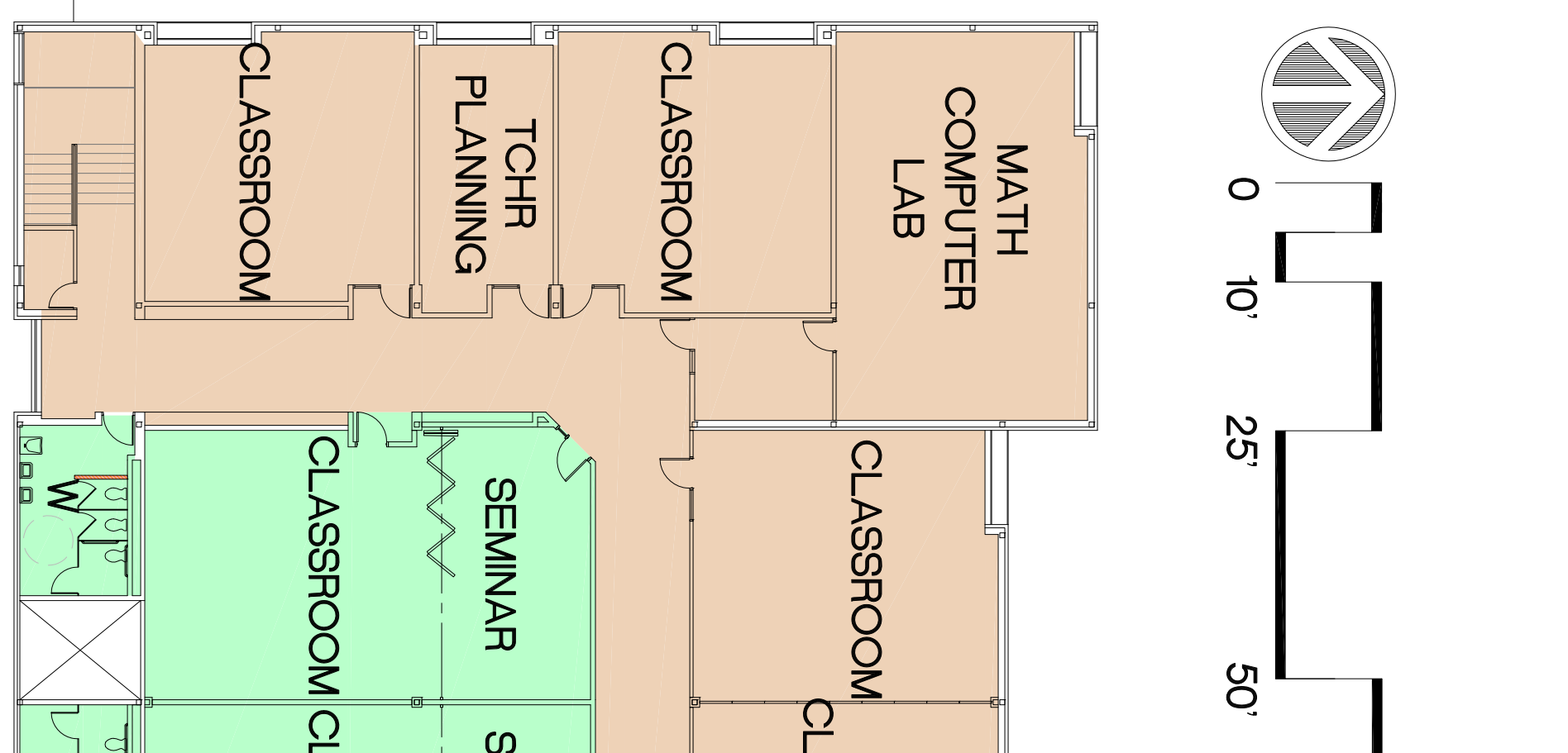
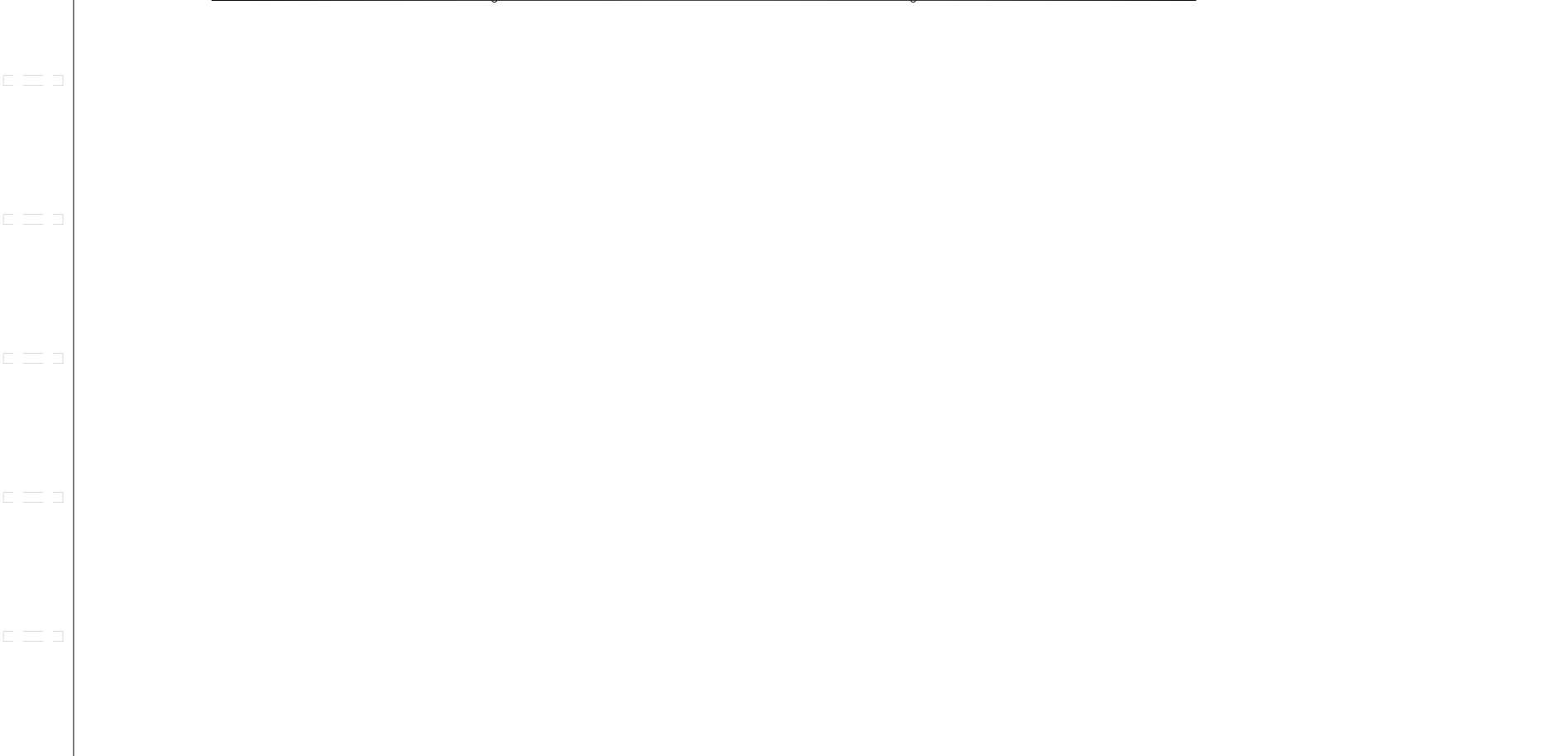
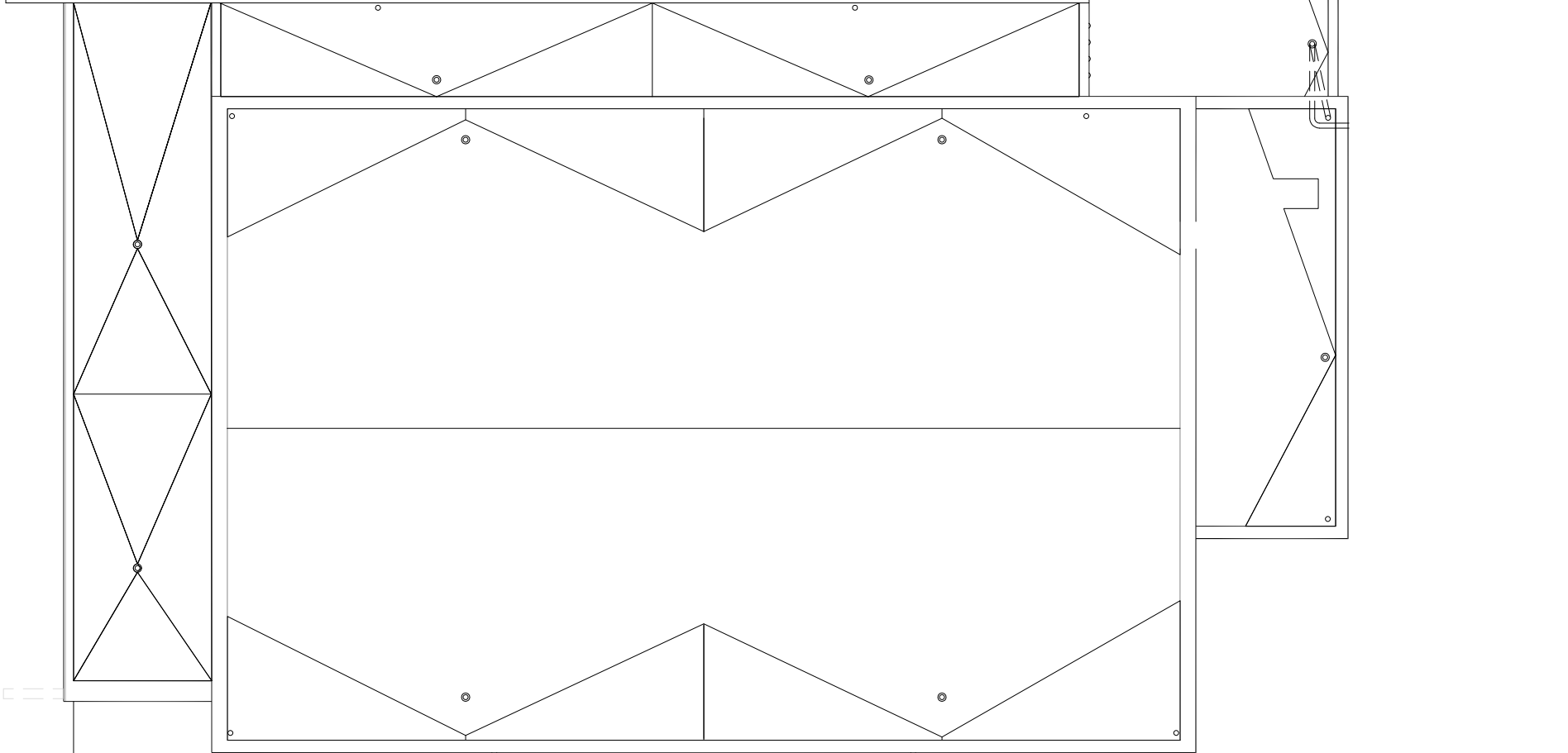
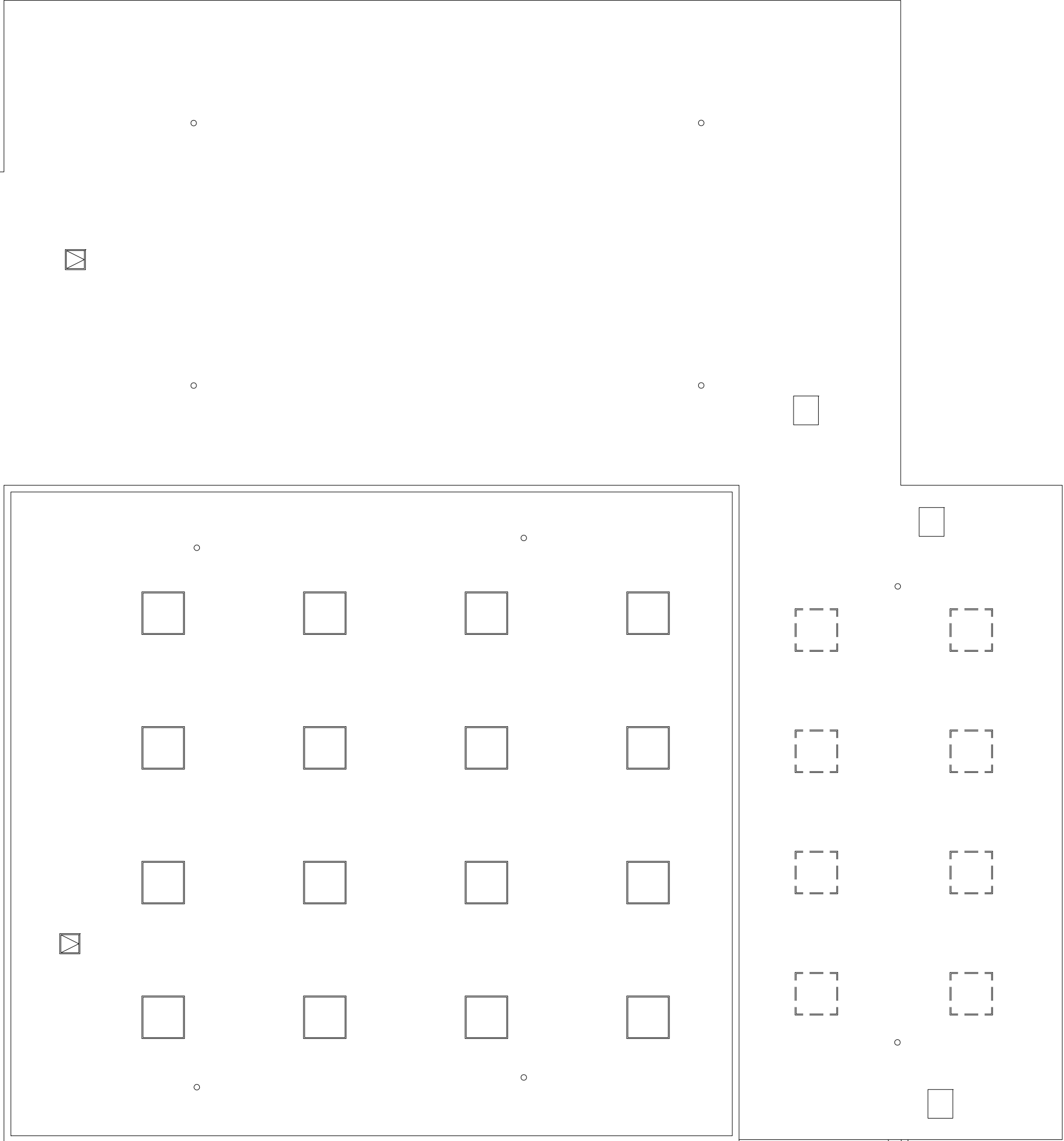
- BUILDING INFORMATION: MAIN LEVEL: * 129,449 66,056 SQUARE FEET
LOWER LEVEL: * 24,410 666
TOTAL BUILDING: * 153,859 66,722 SQUARE FEET
- A. REMOVE AND REPLACE ALL EXTERIOR WINDOWS AND DOORS WITH NEW WINDOWS AND DOORS IN CLASSROOM AREAS.
B. REMOVE EXISTING EXTERIOR DOORS WITH NEW FIRE DOOR WITH GLASS INSERTS IN CLASSROOM AREAS.
C. REMOVE AND REPLACE EXISTING DOORS AND VENTS IN AREAS NOT DIRECTLY AFFECTED BY LIMITED RENOVATION WORK.
D. REMOVE EXISTING EXTERIOR DOORS AND VENTS IN AREAS NOT DIRECTLY AFFECTED BY LIMITED RENOVATION WORK.
E. REMOVE EXISTING EXTERIOR DOORS AND VENTS IN AREAS NOT DIRECTLY AFFECTED BY LIMITED RENOVATION WORK.
F. REMOVE EXISTING EXTERIOR DOORS AND VENTS IN AREAS NOT DIRECTLY AFFECTED BY LIMITED RENOVATION WORK.
G. REMOVE EXISTING EXTERIOR DOORS AND VENTS IN AREAS NOT DIRECTLY AFFECTED BY LIMITED RENOVATION WORK.
H. REMOVE EXISTING EXTERIOR DOORS AND VENTS IN AREAS NOT DIRECTLY AFFECTED BY LIMITED RENOVATION WORK.
I. REMOVE EXISTING EXTERIOR DOORS AND VENTS IN AREAS NOT DIRECTLY AFFECTED BY LIMITED RENOVATION WORK.
J. REMOVE EXISTING EXTERIOR DOORS AND VENTS IN AREAS NOT DIRECTLY AFFECTED BY LIMITED RENOVATION WORK.
K. REMOVE EXISTING EXTERIOR DOORS AND VENTS IN AREAS NOT DIRECTLY AFFECTED BY LIMITED RENOVATION WORK.

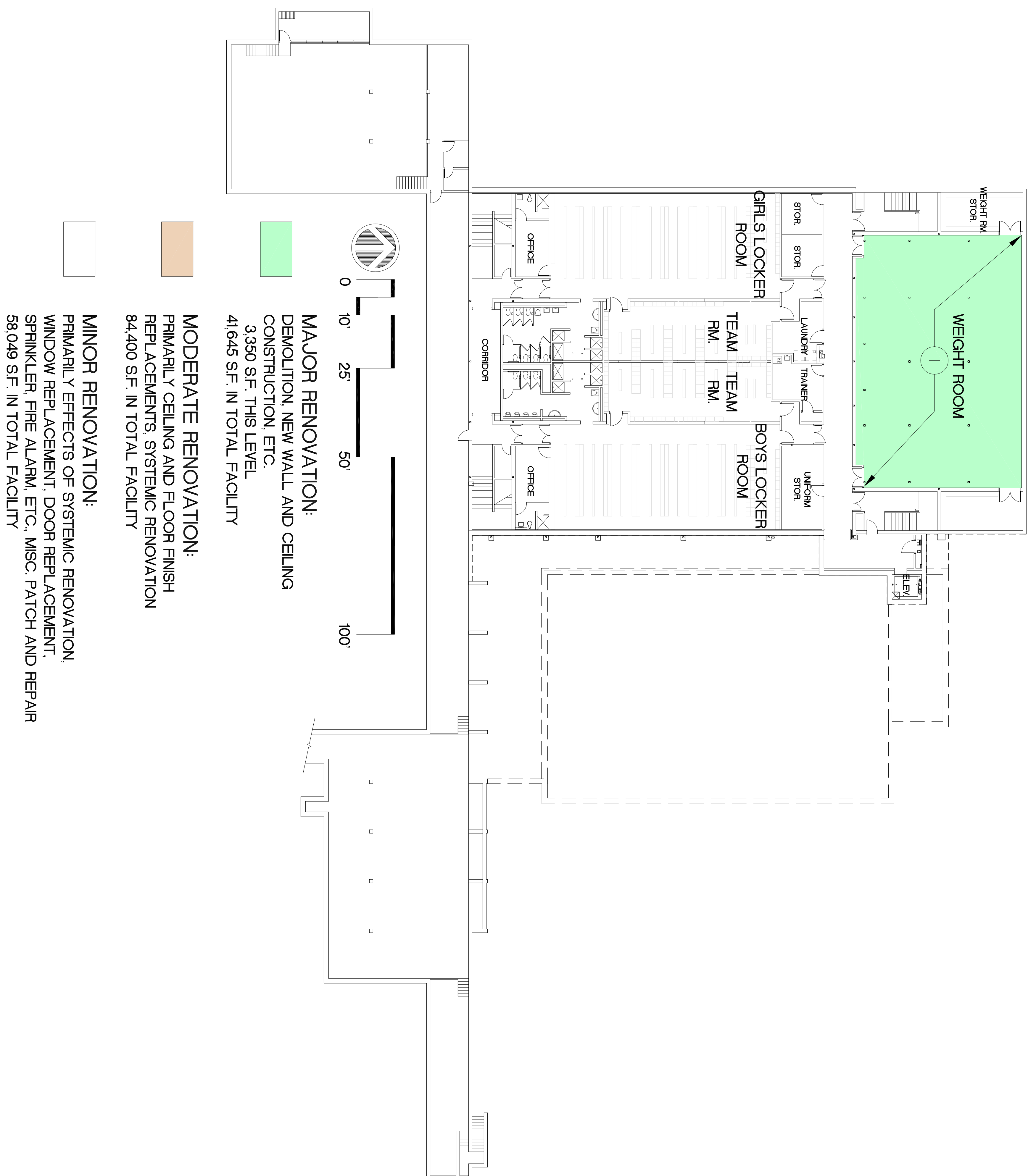
SPECIFIC PLAN NOTES - THIS LEVEL:

1. REMOVE EXISTING EXTERIOR DOORS AND VENTS IN AREAS NOT DIRECTLY AFFECTED BY LIMITED RENOVATION WORK.
2. REMOVE EXISTING EXTERIOR DOORS AND VENTS IN AREAS NOT DIRECTLY AFFECTED BY LIMITED RENOVATION WORK.
3. REMOVE EXISTING EXTERIOR DOORS AND VENTS IN AREAS NOT DIRECTLY AFFECTED BY LIMITED RENOVATION WORK.
4. REMOVE EXISTING EXTERIOR DOORS AND VENTS IN AREAS NOT DIRECTLY AFFECTED BY LIMITED RENOVATION WORK.
5. REMOVE EXISTING EXTERIOR DOORS AND VENTS IN AREAS NOT DIRECTLY AFFECTED BY LIMITED RENOVATION WORK.
6. REMOVE EXISTING EXTERIOR DOORS AND VENTS IN AREAS NOT DIRECTLY AFFECTED BY LIMITED RENOVATION WORK.
7. REMOVE EXISTING EXTERIOR DOORS AND VENTS IN AREAS NOT DIRECTLY AFFECTED BY LIMITED RENOVATION WORK.
8. REMOVE EXISTING EXTERIOR DOORS AND VENTS IN AREAS NOT DIRECTLY AFFECTED BY LIMITED RENOVATION WORK.
9. REMOVE EXISTING EXTERIOR DOORS AND VENTS IN AREAS NOT DIRECTLY AFFECTED BY LIMITED RENOVATION WORK.
10. REMOVE EXISTING EXTERIOR DOORS AND VENTS IN AREAS NOT DIRECTLY AFFECTED BY LIMITED RENOVATION WORK.

JOPPATOWNE HIGH SCHOOL
LIMITED RENOVATION
MAIN LEVEL - SCOPE NOTES







SCOPE NOTES

BUILDING INFORMATION:	
MAIN LEVEL =	125,468 GROSS SQUARE FEET
LOWER LEVEL =	24,410 GSF
UPPER LEVEL =	34,215 GSF
TOTAL BUILDING =	184,094 GROSS SQUARE FEET

- A. REMOVE AND REPLACE ALL EXTERIOR DOORS AND FRAMES WITH NEW REPAIRABLE EXISTING ALUMINUM WINDOWS, LOW E GLAZING, OPERABLE SECTIONS IN CLASSROOM AREAS.
- B. REMOVE AND REPLACE CARPET AND VCT IN AREAS NOT DIRECTLY AFFECTED BY LIMITED RENOVATION WORK.
- C. REMOVE AND ASBEST SHEDDED ACETATEL CEILING SYSTEM INCLUDING AREAS NOT DIRECTLY AFFECTED BY LIMITED RENOVATION WORK. LEADING EXPOSURES HAVE BEEN RECENTLY UPGRADED PROTECT AND MAINTAIN MECHANICAL TOTAL SYSTEM UPGRADE AND SYSTEMIC RENOVATION.
- D. NEW WATERPROOF SERVICE TO BE USED WITH NEW FETTER VALT, UPGRADE FLOOR FINISHES WATER RESISTANT TANK IN HIGH TRAFFIC AREAS TRIED HEATERS AT 700 GALONS EACH.
- E. PLUMBING/TOILET ROOMS REMOVE AND REPLACE SINKS, DRINKS & MATHWORKS RECEIVING NEW SOLID PLASTIC TOILET PARTITIONS, CELLING, LIGHTING, AIR DISTRIBUTION. REFER TO DRAWINGS 9K-1 AND 9K-2 FOR TOILET ROOM
- F. ELECTRICAL: NEW ELECTRICAL SERVICE AND ELECTRICAL SERVICE ROOM POWER CAPACITY TO BE 4000 AMPH. NEW SWITCHBOARD WITH SPARE CIRCUIT SPACE PROVIDED FOR ADDITIONAL EXPANSION. EXISTING SWITCHBOARD CAN BE BROKEN TED LINE SERVICE TOTAL. NEW ALARM SYSTEM BELL ADHERENT.
- G. REMOVAL OF EXISTING LOCKERS, HANGERS IN AREAS NOT DIRECTLY AFFECTED BY LIMITED RENOVATION WORK. NEW LOCKERS - APPROX. 1000. REMOVE AND REPLACE EXISTING DOOR CASING, TRIM, BASEBOARD, WOODWORK, WALL COVERING, CROWN MOULDING, ETC. RECENT AVIARY GRAMMADY ADDITION APPROXIMATELY 16,000 SQUARE FEET.

SPECIFIC PLAN NOTES- THIS LEVEL

1. HEIGHT/ADDITION ROOM AREA, APPROXIMATELY 3,400 S.F. CONSTRUCT NEW CONCRETE SLAB ON RETAIL DECK, SUPPORTED BY STRUCTURAL STEEL COLUMN AND BEAM SYSTEM CONTIGUOUS WITH MAIN LEVEL. (ELEVATE APPROX. 11'-4") NEW CONSTRUCTION AT 4" IN INDICATE ON PLAN. NEW CEILING LIGHTING AND FINISHES AT MAIN LEVEL. LOWER LEVEL, EXPOSED STRUCTURE-PAINTED. NEW LIGHTING, HVAC AS PART OF OVERALL SYSTEMIC RENOVATION.
2. CEILING REPLACEMENT THIS LEVEL - ONLY RELATED TO ITEM 1. ABOVE