

# FAST FACTS

based on the  
2015-16 school year



## FACILITIES

- 183 total buildings\*
- 2,295 total classrooms
- 25.65 miles of driveway
- 1,563 acres of land
- 90.07 acres of parking lots
- 1,284,423,795 total property value\*\*

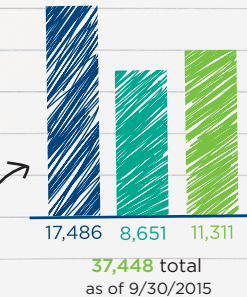


## GRADUATION RATE

89.94% for the class of 2015

## ENROLLMENT

■ Elementary ■ Middle ■ High



## 54 SCHOOLS

- 1 technical high school
- 1 special education
- 1 alternative education
- 9 middle
- 9 high
- 33 elementary

## STATE RANKINGS

- 9 Maryland Blue Ribbon and 7 National Blue Ribbon Schools
- 20 Maryland Green Schools
- 8th largest school district in Maryland
- 23rd of the 24 Maryland districts in per pupil funding\*\*\*\*

## TRANSPORTATION

- 433 buses
- 32,535 number of students transported
- 448,552 hours driven
- 7,674,761 miles traveled
- 6th of the 24 Maryland districts in school bus fleet size



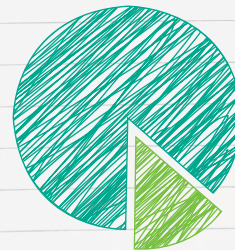
## FOOD SERVICES



- 1,517,545 breakfasts served
- 3,296,557 lunches served
- 70,689 summer meals served\*\*\*

## EMPLOYEES

- 4,819 school-based employees
- 398 non-school-based employees
- 5,217 total employees



\*This figure includes portables. \*\*Insurance Buyers Council assigned value. Includes trending increase from 10/1/2013 appraisal. \*\*\*Total includes 7,702 mobile meals. \*\*\*\*These rankings are from the FY2016 Overview of Maryland Local Governments Finances and Demographic Information, Exhibit 7.2 Per Pupil Revenues for Public Schools in Fiscal 2016.