

BOARD OF EDUCATION OF HARFORD COUNTY

INFORMATIONAL REPORT

DECISION ON SITE LOCATION STUDY FOR THE JOHN ARCHER SCHOOL

August 16, 2021

Background Information:

In 2009, Smolen & Emr Associates completed a scope study to assess the current building condition, safety, and educational program efficiency of the John Archer School (JAS) facilities. It was determined that the existing JAS building had reached a point where components and systems needed to be replaced. The original JAS was built in 1971 and was designed to serve students with severe disabilities. The scope study determined that the instructional needs, as well as the support service requirements of the students attending JAS, have changed since the construction of the original building. The scope study also considered the relocation of JAS to the Bel Air campus.

At that time, it was determined that the Bel Air campus was the most feasible site for the relocation and placement of JAS. Under the guidance of the Director of Special Education and the Facility Planner for HCPS, programmatic and spatial requirements were defined and used by the Scope Study Committee to develop three (3) concept schemes that addressed the instructional and site requirements for the future development on the Bel Air campus.

This project has remained a top priority and has been prioritized with the other major capital school facility needs within the County. Twelve years have passed, and the JAS Replacement School project is now the highest major capital priority following the Homestead/Wakefield Elementary Replacement School project. On August 10, 2020, the Board of Education approved a contract with FLO Analytics for the Balancing Enrollment project and an update of the site location study for JAS. FLO Analytics partnered with Banta Campbell Architects to conduct a site location study as part of the overall Balancing Enrollment project.

Discussion:

The John Archer School serves our most medically fragile and severely disabled students countywide; therefore, determining the best location for a replacement school is crucial for travel times and student's access to services and programs. The site location study considered seven (7) sites for the relocation of JAS. Three (3) of the sites do not currently have an existing building. Four (4) of the sites are existing school facility properties. Data was gathered for each of the sites considering proximity to the Town of Bel Air, Upper Chesapeake Medical Center, and travel distances from edge points of Harford County like White Hall, Whiteford, and Havre de Grace.

At the conclusion of the site location study for JAS, it was determined that the Campus Hills site provided the best option due to the central location and ideal access to amenities and services. The Campus Hills site is less than a mile from the current location; therefore, the school can continue with the partnerships already established with Harford Technical School High School, Harford Community College, and Towson University Northeast. Additionally, construction of the new facility would not impact any current school operations with only minimal impact to transportation routes and times. Ongoing traffic improvements in the area will also help with transportation. The site is co-located with a Parks and Recreation site where a sensory trail was recently added providing access to a valuable amenity to the population this school serves.

Once the Board of Education approves a site location, the next step would include advertising for design services to complete a feasibility study for JAS located at the Campus Hills site and the development of educational specifications. Local planning approval from the State is planned to be requested for this project with the FY 2024 Capital Improvement Program request. The State Interagency Commission on School Construction must grant local planning approval for this project to be considered for future State funding.

Superintendent's Recommendation:

The Superintendent of Schools recommends that the Board of Education approve the option to completely replace John Archer School and to relocate the school from its current location to the Campus Hills site, located at 301 Schucks Road.



Siting Location Study for

**THE JOHN
ARCHER SCHOOL**



HARFORD COUNTY PUBLIC SCHOOLS
August 3, 2021

BANTA CAMPBELL ARCHITECTS, INC.

10221 Wincopin Circle
Columbia, Maryland 21044
410-290-9006

Table Of CONTENTS

Items below are hyperlinked throughout the document

	Page
PROJECT INTRODUCTION AND BACKGROUND	2
APPROACH AND EXECUTIVE SUMMARY	2
HARFORD COUNTY SITE LOCATION MAP.....	3
SITE LOCATION AND DISTANCE DATA.....	4
OPTION 1 - WOODBRIDGE CENTER	
SUMMARY.....	5
SITE PLAN.....	6
OPTION 2 - EXISTING JOHN ARCHER LOCATION-HARFORD TECH HIGH SCHOOL	
SUMMARY.....	7
SITE PLAN OPTION 1	8
SITE PLAN OPTION 2	9
OPTION 3 - WILLIAM PACA/OLD POST ELEMENTARY	
SUMMARY.....	10
SITE PLAN.....	11
OPTION 4 - BOX HILL SOUTH	
SUMMARY.....	12
SITE PLAN.....	13
OPTION 5 - BEL AIR CAMPUS-BEL AIR MIDDLE SCHOOL	
SUMMARY.....	14
SITE PLAN.....	15
OPTION 6 - RING FACTORY ELEMENTARY	
SUMMARY.....	16
SITE PLAN.....	17
OPTION 7 - CAMPUS HILLS	
SUMMARY.....	18
SITE PLAN.....	19
APPENDIX	
STAKE HOLDER SURVEY	20

PROJECT INTRODUCTION AND BACKGROUND

The Banta Campbell Architects, Inc. Design Team was engaged by Harford County Public Schools as a component of the Flo-Analytics Enrollment Balancing process. The BCA Design Team has recently completed an updated Homestead Wakefield Elementary School Scope Study which was approved by the Board of Education in February 2021.

The existing John Archer School is located on property shared with Harford Tech High School and Prospect Mill Elementary School. The school was first constructed in 1971 with additions/renovations in 1981. There have been no significant improvements there in several years.

The previous John Archer School Scope Study was completed in 2009. It focused primarily as an addition at the Bel Air Middle School located on the “Bel Air Campus” which also include Bel Air High School and Homestead/Wakefield Elementary School. Option 3 of the previous Scope Study was designed as a stand-alone facility with corridor connections to Bel Air Middle School. No significant improvements have occurred at the Bel Air Middle School since the completion of the Scope Study.

The BCA Design Team is tasked with considering alternate site locations in Harford County. The Option 3 from the previous Scope Study is used as a guiding footprint to work with. The area of the proposed facility is approximately 125,000 square feet. Seven sites are identified as possible locations.

APPROACH AND EXECUTIVE SUMMARY

Seven sites are considered for relocation of the John Archer School. Three of the sites do not currently have an existing building. Four of the sites are existing school facility properties. Data is gathered for each of the sites considering proximity to the Town of Bel Air, Upper Chesapeake Medical Center and travel distances from edge points of Harford County like White Hall, Whiteford, and Havre de Grace.

Conceptual building footprints are indicated on each of the sites. They borrow from the Option 3 of the previous Scope Study noted above. In four instances the floor plan is modified slightly to better fit the site available area. The building footprints are shown primarily to demonstrate their impact on the site. Parking, site circulation, storm water management and more detailed site planning are not currently indicated. These will be developed in a next phase with a selected/preferred site.

Conclusion and Recommendation

The following pages include graphic representations of each of the sites being considered including site information, distance data, with pros and cons of each location. An Internal Stake Holders survey was conducted and is included as in appendix. All information gathered and considered leads to the final recommendation.

The Superintendent of Schools recommends that the Board of Education approve the Campus Hills Site as the location of the John Archer Replacement School.

HARFORD COUNTY SITE LOCATION MAP





John Archer School - Potential Site Locations Distance Data

Site Location	Physical Distance from Existing John Archer School	Physical Distance from BelAir	Physical Distance from White Hall	Physical Distance from Whiteford	Physical Distance from Havre de Grace	Mileage & Drive Time to UC Med Center	HCPS Transportation Comments	
							PROS	CONS
Woodbridge Center 1219 Clover Valley Way Edgewood, MD 21040	9.07 miles 13.6 Driving miles 21 minutes	7.48 miles 10.2 Driving miles 19 minutes	20.63 miles 25.2 Driving miles 41 minutes	19.36 miles 24.6 Driving miles 38 minutes	15.01 miles 19.5 Driving miles 24 minutes	6.32 miles 9.4 Driving miles 18 minutes	None	Negative Impact to capacity and routing due to the distance for students in the northern section of the county. Additional time and mileage to work sites and community based trips.
John Archer School 100 Thomas Run Road Bel Air, MD 21015	N/A	3.54 miles 3.8 Driving miles 7 minutes	18.61 miles 22.3 Driving miles 36 minutes	11 miles 14.2 Driving miles 21 minutes	10.51 miles 11.9 Driving miles 19 minutes	4.04 miles 5.4 Driving miles 13 minutes	Current routing would remain in place and no change in ride times for students.	None
William Paca/ Old Post Rd Elementary 2706 Old Philadelphia Rd Abingdon, MD 21009	7.48 miles 8.9 Driving miles 17 minutes	6.35 miles 7.1 Driving miles 16 minutes	21.23 miles 26.4 Driving miles 42 minutes	18.11 miles 21.5 Driving miles 33 minutes	12.9 miles 16.4 Driving miles 21 minutes	5.49 miles 6.3 Driving miles 15 minutes	None	Negative Impact to capacity and routing due to the distance for students in the northern section of the county. Additional time and mileage to work sites and community based trips.
Box Hill South 333 Windy Laurel Way Abingdon, MD 21009	6.09 Miles 7.7 Driving miles 15 minutes	5.10 miles 5.4 Driving miles 12 minutes	20.39 miles 25.9 Driving miles 43 minutes	16.74 miles 20.8 Driving miles 31 minutes	12.39 miles 15.5 Driving miles 22 minutes	4.21 miles 5.1 Driving miles 13 minutes	None	Negative Impact to capacity and routing due to the distance for students in the northern section of the county. Additional time and mileage to work sites and community based trips.
Bel Air Campus 99 Idlewild Street Bel Air, MD 21014	3.7 miles 4.3 Driving miles 11 minutes	3,261.30 ft .7 Driving miles 3 minutes	16.53 miles 20.4 Driving miles 35 minutes	12.58 miles 15.5 Driving miles 27 minutes	13.4 miles 15.9 Driving miles 28 minutes	2.8 miles 3.2 Driving miles 9 minutes Walking 1 mile 19 minutes	Close to current location and impact to routing would be minimal. Proximity to the hospital and community based trip locations is ideal.	Traffic Volume and additional congestion on a complex that already has traffic congestion concerns.
Ring Factory Elementary 1400 Emmorton Road Bel Air, MD 21014	3.82 miles 5.4 Driving miles 13 minutes	1.76 miles 1.6 Driving miles 5 minutes	17.43 miles 21.4 Driving miles 37 minutes	13.65 miles 16.5 Driving miles 29 minutes	13 miles 20.4 Driving miles 28 minutes	4,450.71 ft (1.36 km) 2 Driving miles 8 minutes	Close to current location and impact to routing would be minimal. Proximity to the hospital and community based trip locations is ideal.	Possible traffic volume and congestion concerns along Ring Factory Road during arrival and dismissal depending on changes to the tier schedule arrival would be the same as Ring Factory ES.
Campus Hills 301 Schuck's Road Bel Air, MD 21015	4,310.03 ft .8 Driving miles 3 minutes	3.22 miles 4.4 Driving miles 9 minutes	18.84 miles 22.9 Drivingmiles 36 minutes	11.7 miles 15.3 Driving miles 22 minutes	10.44 miles 12.4 Driving miles 20 minutes	3.64 miles 6 Driving miles 4 minutes	Current routing would remain in place and no change to ride times for students.	None

WOODRIDGE CENTER

1219 Clover Valley Way
Edgewood, MD 21040

19.8 Acres

Currently no building development on the site.

PROS

- Public utilities available nearby site.

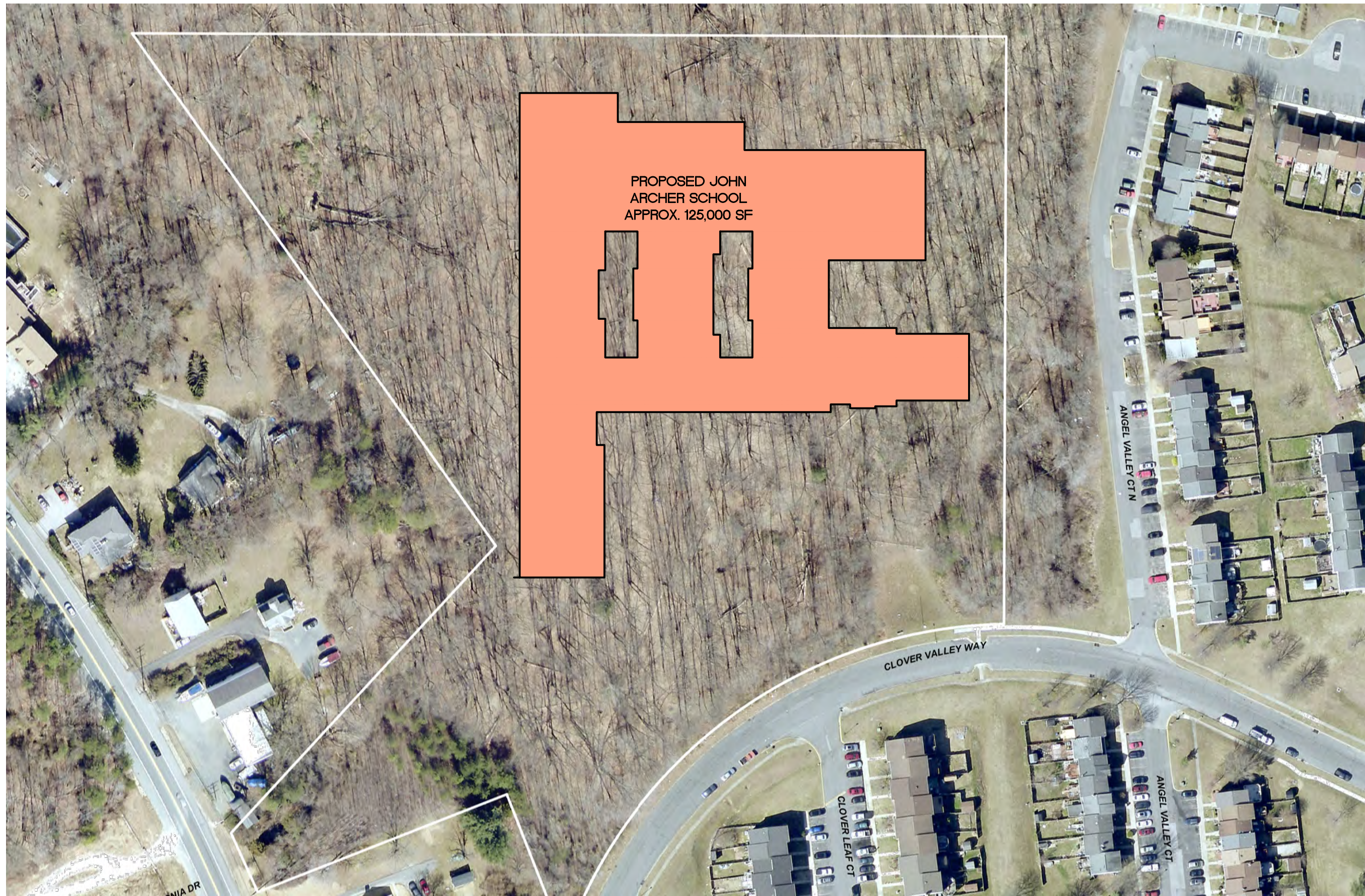
CONS

- Limited play field area available.
- Not co-located with existing school for possible peer connections.
- Existing completely wooded site.
- Most southerly site being considered.
- Access is through residential neighborhood from MD152.
- Transportation negative impact to capacity and routing.
- Distance and travel time from northern edges of Harford County – approx. 41 minutes.

SITE LOCATION AND DISTANCE DATA

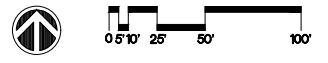
- Physical distance from existing John Archer School Bel Air, MD 21015 = 9.07 miles | Driving 13.6 miles / 21 minutes
- Physical distance from center of Bel Air (303 South Main Street) = 7.48 miles | Driving 10.2 miles / 19 minutes
- Physical distance from White Hall, MD 21161 = 20.63 miles | Driving 25.2 miles / 41 minutes
- Physical distance from Whiteford, MD 21160 = 19.36 miles | Driving 24.6 miles / 38 minutes
- Physical distance from Havre de Grace MD 21078 = 15.01 miles | Driving 19.5 miles / 24 minutes
- Mileage & Drive Time to Upper Chesapeake Medical Center Bel Air = 6.32 miles | Driving 9.4 miles / 18 minutes





PROPOSED JOHN
ARCHER SCHOOL
APPROX. 125,000 SF

CLOVER VALLEY WAY



SCALE: 1" = 100'-0"

MAY 21, 2021



JOHN ARCHER PROPOSED LOCATION -WOOD BRIDGE CENTER
1219 Clover Valley Way, Edgewood, Maryland 21009



EXISTING JOHN ARCHER SCHOOL - HARFORD TECHNICAL HIGH SCHOOL

200 Thomas Run Road
Bel Air, MD 21015

? Acres

The site currently houses the John Archer School, Harford Tech High School and Prospect Mill Elementary School. Prospect Mill has traffic access from Prospect Mill Road and does not mix with John Archer or Harford Tech.

Two location options are included. Each allow for construction of new John Archer School and demolition of the existing facility after completion. The existing school footprint will become play/practice fields displaced by new John Archer construction.

SITE LOCATION AND DISTANCE DATA

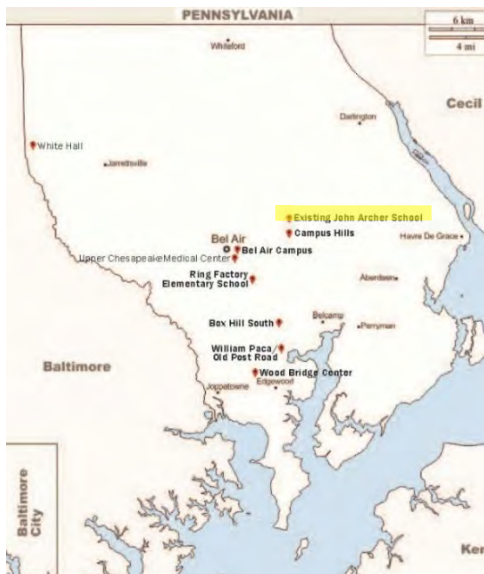
- Physical distance from center of Bel Air (303 South Main Street) = 3.54 miles | 3.8 Driving miles / 7 minutes
- Physical distance from White Hall, MD 21161 = 18.61 miles | 22.3 Driving miles / 36 minutes
- Physical distance from Whiteford, MD 21160 = 11 miles | 14.2 Driving miles / 21 minutes
- Physical distance from Havre de Grace, MD 21078 = 10.51 miles | 11.9 Driving miles / 19 minutes
- Mileage & Drive Time to Upper Chesapeake Medical Center Bel Air = 4.04 miles | 5.4 Driving miles / 13 minutes

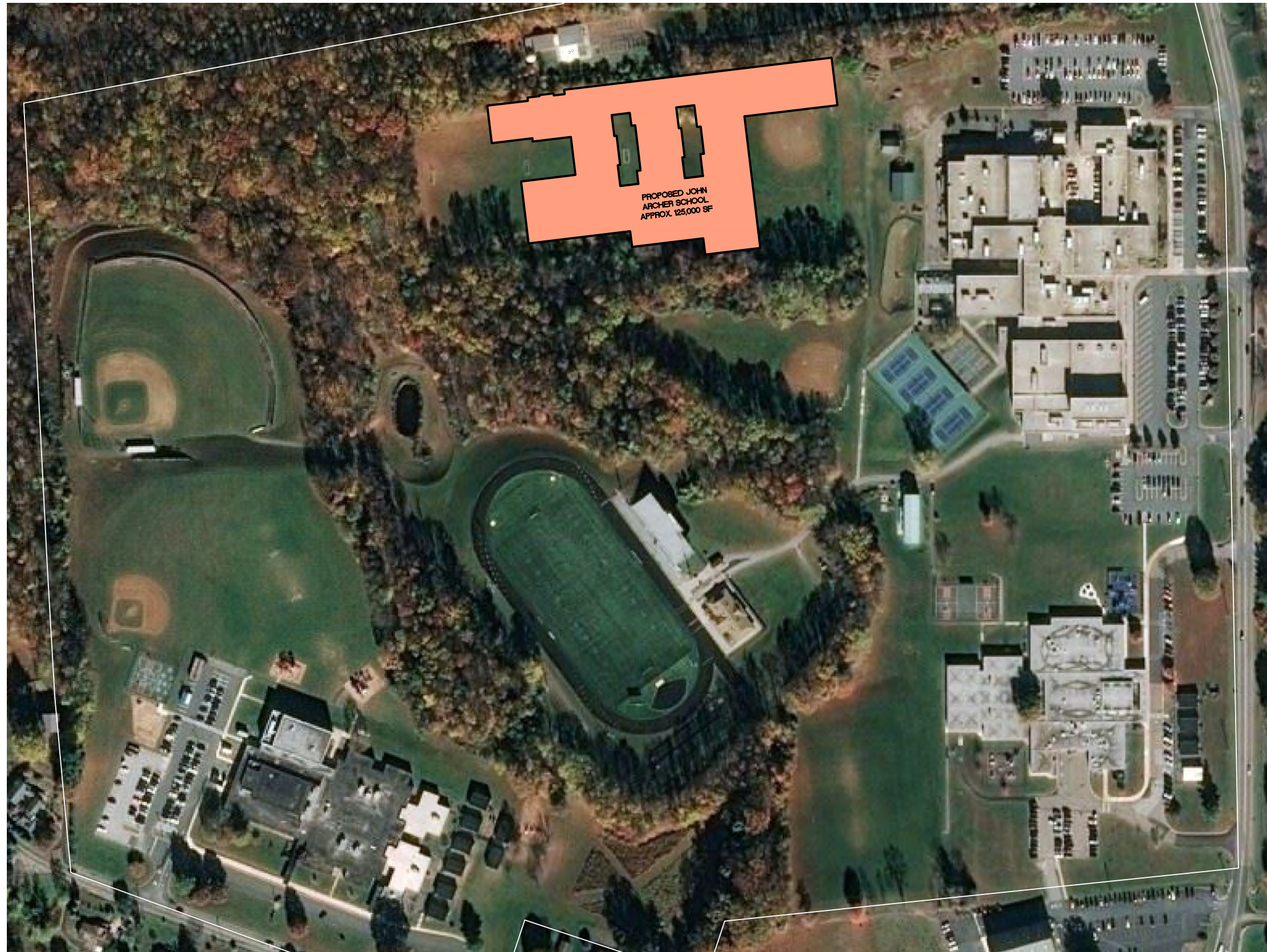
PROS

- Co-located with existing schools for possible peer connections.
- Proximity to Nursing Program at Harford Technical and Harford Community College across Thomas Run Road.

CONS

- Congested campus with three facilities.
- Connection to existing package wastewater treatment plant.
- New John Archer development will require demolition of existing facility not allowing it to be repurposed for other functions.
- Septic reserve area limits placement of new playfields on existing John Archer footprint. Playfields will be located on busy traffic corner.





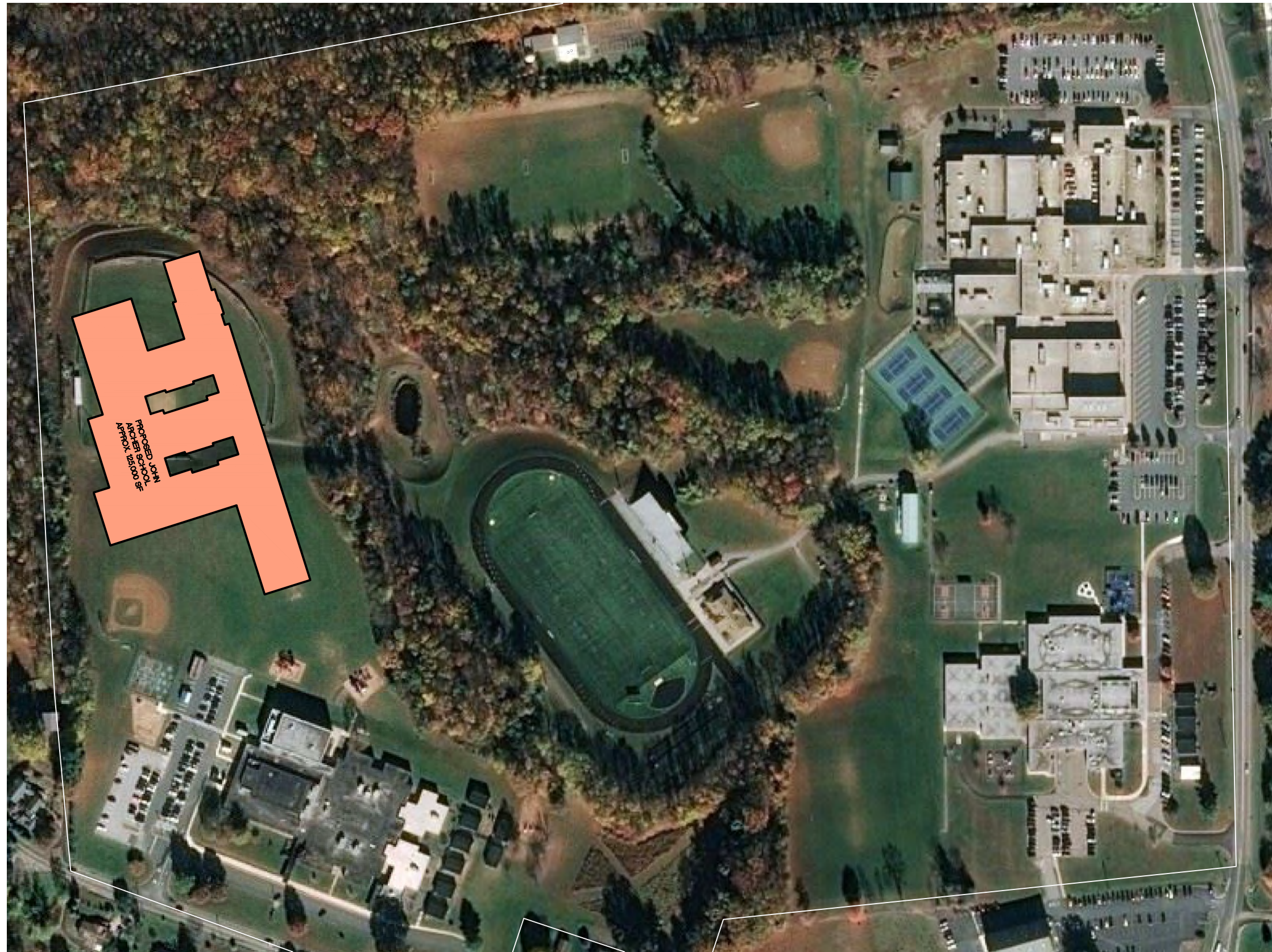
JOHN ARCHER PROPOSED LOCATION -HARFORD TECHNICAL HIGH SCHOOL - OPTION 1

Amoss Center, 200 Thomas Run Rd, Bel Air, MD 21015



SCALE: 1" = 200'-0"

MAY 21, 2021



JOHN ARCHER PROPOSED LOCATION -HARFORD TECHNICAL HIGH SCHOOL - OPTION 2

Amoss Center, 200 Thomas Run Rd, Bel Air, MD 21015



SCALE: 1" = 200'-0"

MAY 21, 2021

WILLIAM PACA/OLD POST ELEMENTARY

2706 Old Philadelphia Road
Abingdon, MD 21009

47.18 Acres

The existing site includes separate buildings for William Paca and Old Post Elementary and associated playfields.

A scope study has been completed for a replacement facility in a single structure.

PROS

- Public Utilities available on site.
- Proposed location for John Archer accounts for planned replacement building.
- Co-located with existing/replacement school for possible peer connections.

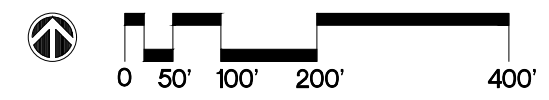
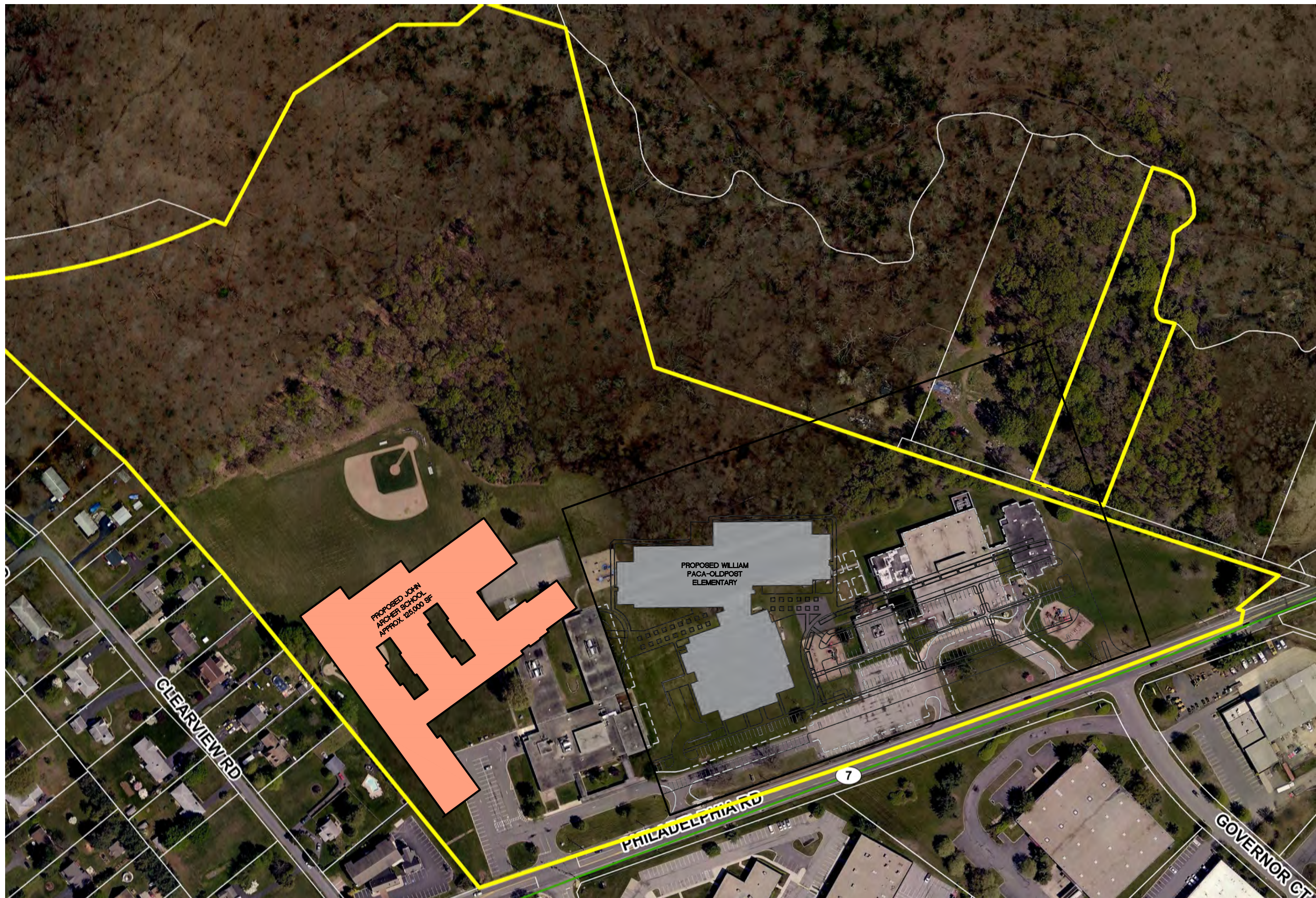
CONS

- Limited play field area unless extended into existing wooded areas.
- Construction phasing and timing with replacement school construction.
- Transportation negative impact to capacity and routing.
- Distance and travel time from northern edges of Harford County – approx. 42 minutes.

SITE LOCATION AND DISTANCE DATA

- Physical distance from existing John Archer School Bel Air, MD 21015 = 7.48 miles | 8.9 miles / 17 minutes
- Physical distance from center of Bel Air (303 South Main Street) = 6.35 miles | 7.1 miles / 16 minutes
- Physical distance from White Hall, MD 21161 = 21.23 miles | 26.4 miles / 42 minutes
- Physical distance from Whiteford, MD 21160 = 18.11 miles | 21.5 miles / 33 minutes
- Physical distance from Havre de Grace MD 21078 = 12.9 miles | 16.4 miles / 21 minutes
- Mileage & Drive Time to Upper Chesapeake Medical Center Bel Air= 5.49 miles | 6.3 miles / 15 minutes





JOHN ARCHER PROPOSED LOCATION at PROPOSED WILLIAM PACA/OLD POST ROAD ELEMENTARY
2706 Old Philadelphia Road, Abingdon, Maryland 21009

SCALE: 1" = 200'-0"
MAY 13, 2021

BOX HILL SOUTH

333 Windy Laurel Way
Abingdon, MD 21009

17.86 Acres

Currently no building development- play fields for Parks and Recreation

PROS

- Building potential does not impede or diminish any existing school facility use.
- Public utilities available nearby.
- Reasonably close to center of Harford County and access from MD24 and MD924.

CONS

- School development will displace Parks and Recreation Fields.
- Not co-located with another school for possible peer connections.
- Transportation negative impact to capacity and routing.
- Distance and travel time from northern edges of Harford County – approx. 43 minutes.

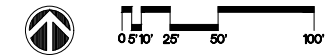
SITE LOCATION AND DISTANCE DATA

- Physical distance from existing John Archer School Bel Air, MD 21015 = 6.09 Miles | Driving 7.7 miles / 15 minutes
- Physical distance from center of Bel Air (303 South Main Street) = 5.10 miles | Driving 5.4 miles / 12 minutes
- Physical distance from White Hall, MD 21161 = 20.39 miles | Driving 25.9 miles / 43 minutes
- Physical distance from Whiteford, MD 21160 = 16.74 miles | Driving 20.8 miles / 31 minutes
- Physical distance from Havre de Grace, MD 21078 = 12.39 miles | Driving 15.5 miles / 22 minutes
- Mileage & Drive Time to Upper Chesapeake Medical Center Bel Air = 4.21 miles | Driving 5.1 miles / 13 minutes





JOHN ARCHER PROPOSED LOCATION -BOX HILL SOUTH
333 Windy Laurel Way, Abingdon, Maryland 21009



SCALE: 1" = 100'-0"
MAY 21, 2021

BCA
Banta Campbell
ARCHITECTS, INC.

BEL AIR CAMPUS – BEL AIR MIDDLE SCHOOL

99 Idlewild Street
Bel Air, MD 21014

? Acres

The site currently houses Bel Air Middle School and Homestead Wakefield Elementary School.

Bel Air High School is adjacent but not connected by roadway.

This location was considered with the previous John Archer School Scope Study.

A Scope Study has recently been completed and approved for a Homestead Wakefield Elementary School Replacement.

PROS

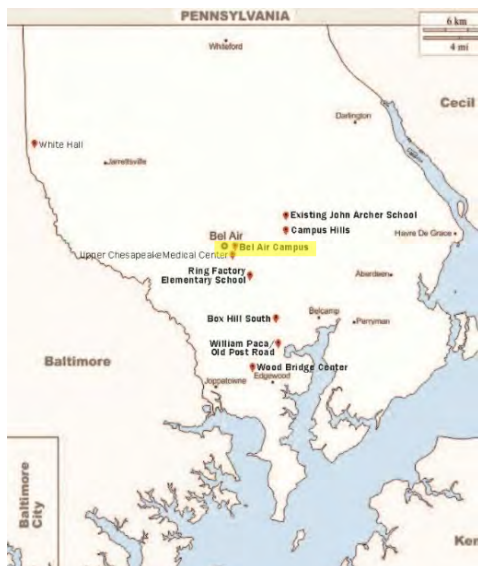
- Public utilities available on site.
- Co-located with existing school for possible peer connections.
- Proximity to Bel Air High School Bio-Med Signature Program.
- Proximity for Future Link program transportation.
- Most central location and close access to Upper Chesapeake Medical Center.

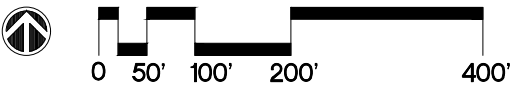
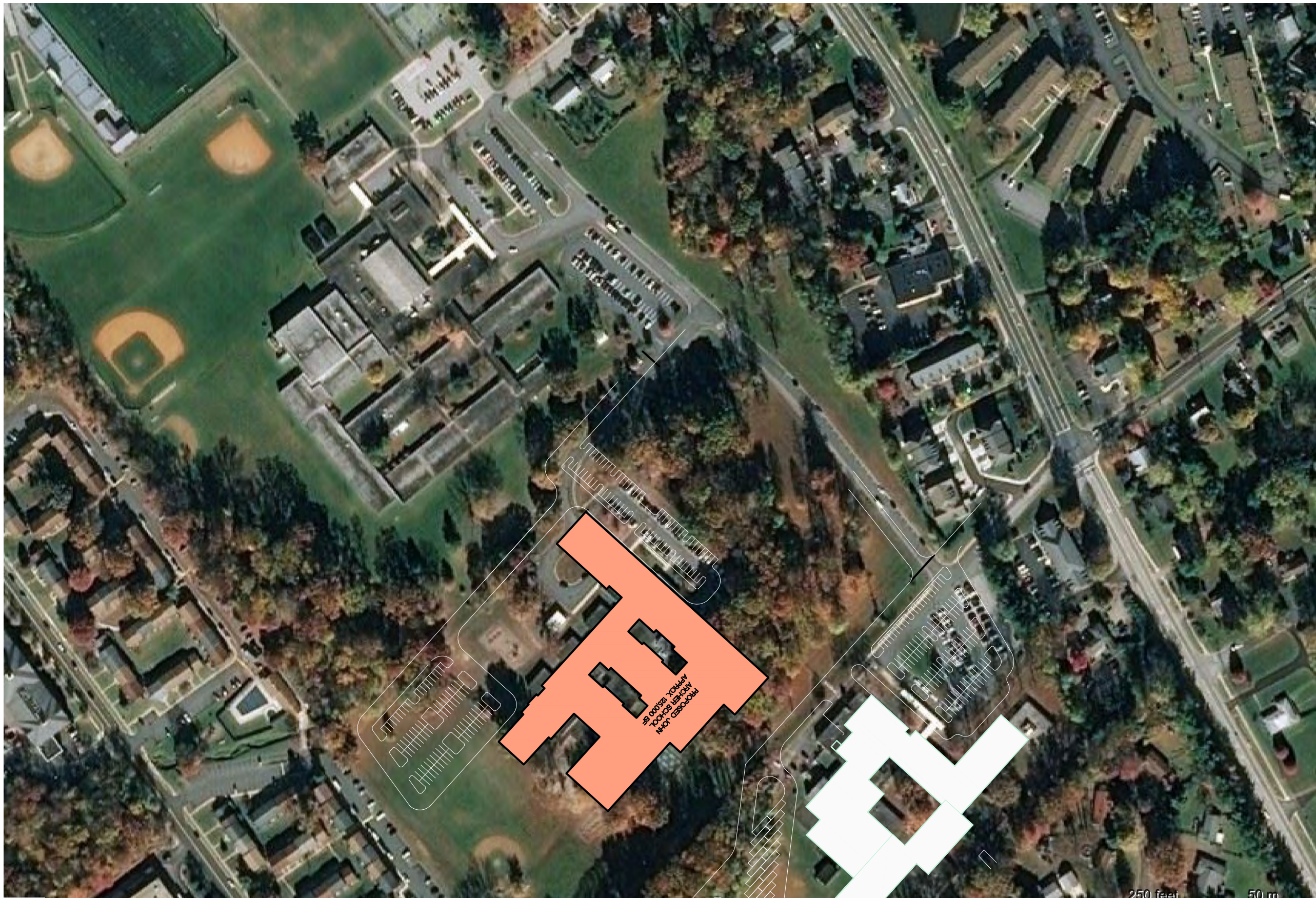
CONS

- Congested campus and traffic volume concerns. Congested traffic access from MD924 to Macphail Road and exit via Idlewild Street.
- Proposed location will greatly diminish playfields for Homestead Wakefield Elementary School.
- John Archer development will severely limit renovation/expansion possibilities for Bel Air Middle.

SITE LOCATION AND DISTANCE DATA

- Physical distance from existing John Archer School Bel Air, MD 21015 = 3.7 | 4.3 Driving miles / 11 minutes
- Physical distance from center of Bel Air (303 South Main Street) = 3,261.30 ft | .7 Driving miles / 3 minutes
- Physical distance from White Hall, MD 21161 = 16.53 miles | 20.4 Driving miles / 35 minutes
- Physical distance from Whiteford, MD 21160 = 12.58 miles | 15.5 Driving miles / 27 minutes
- Physical distance from Havre de Grace MD 21078 = 13.4 miles | 15.9 Driving miles / 28 minutes
- Mileage & Drive Time to Upper Chesapeake Medical Center Bel Air, 21014 = 2.8 miles | 3.2 Driving miles / 9 minutes





JOHN ARCHER PROPOSED LOCATION - BEL AIR MIDDLE SCHOOL
99 Idlewild St, Bel Air, Maryland, United States

SCALE: 1" = 200'-0"
MAY 21, 2021



RING FACTORY ELEMENTARY

1400 Emmorton Road
Bel Air, MD 21014

34.27 Acres

The existing site includes the Ring Factory Elementary School and associated playfields.

PROS

- Public Utilities available on site.
- Co-located with an existing school for possible peer connections.
- Central of Harford County and access from MD924.
- Very close access to Upper Chesapeake Medical Center.
- Transportation routing impact will be minimal.

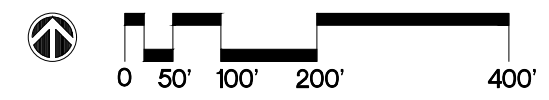
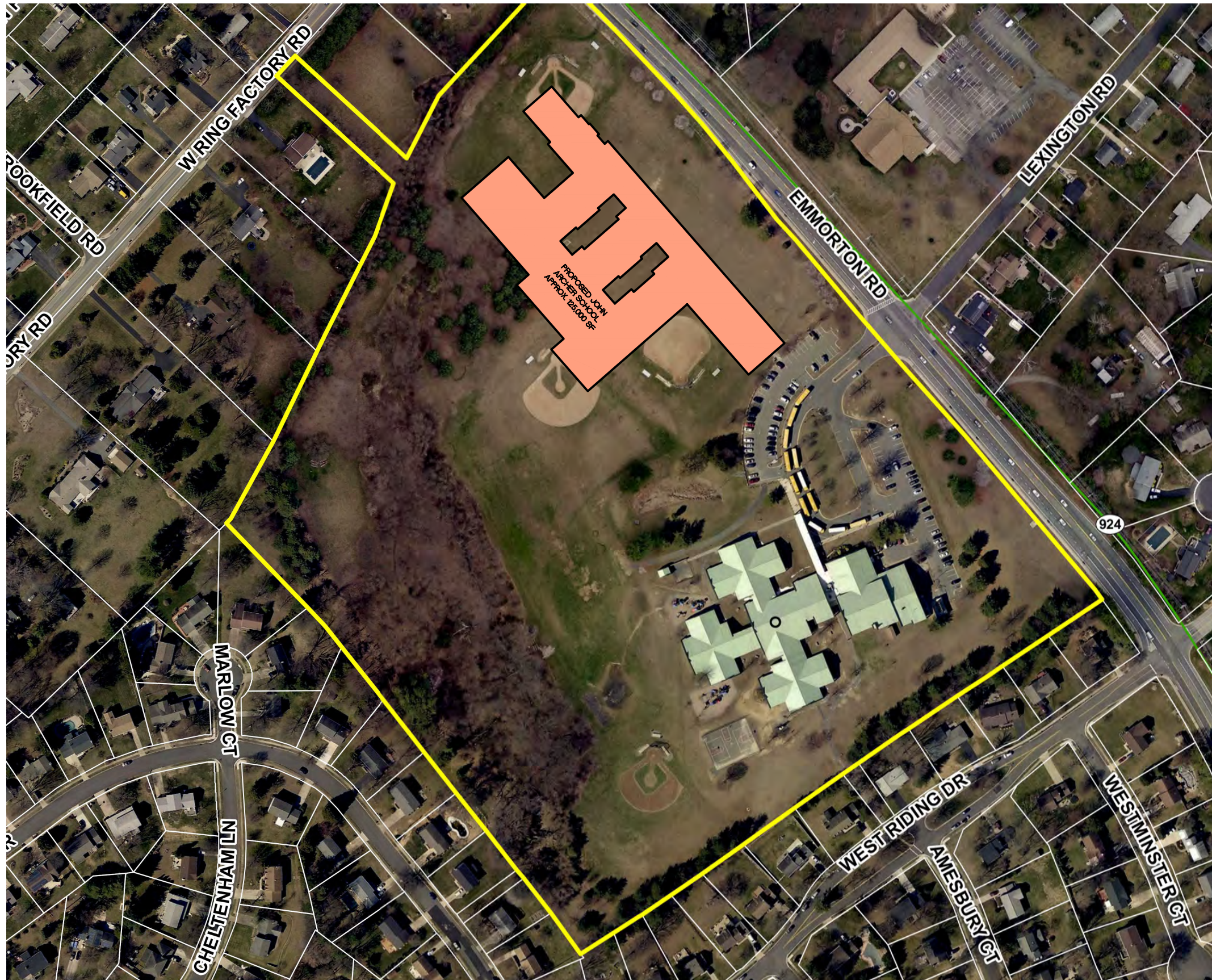
CONS

- John Archer School development will remove at least half of existing school play fields.
- Traffic volume and congestion.

SITE LOCATION AND DISTANCE DATA

- Physical distance from existing John Archer School Bel Air, MD 21015 = 3.82 miles | 5.4 miles / 13 minutes
- Physical distance from center of Bel Air (303 South Main Street) = 1.76 miles | 1.6 miles / 5 minutes
- Physical distance from White Hall, MD 21161 = 17.43 miles | 21.4 miles / 37 minutes
- Physical distance from Whiteford, MD 21160 = 13.65 miles | 16.5 miles / 29 minutes
- Physical distance from Havre de Grace MD 21078 = 13 miles | 20.4 miles / 28 minutes
- Mileage & Drive Time to Upper Chesapeake Medical Center Bel Air = 4,450.71 ft (1.36 km) | 2 miles / 8 minutes





JOHN ARCHER PROPOSED LOCATION - RING FACTORY ELEMENTARY
1400 Emmorton Road, Bel Air, Maryland 21014

SCALE: 1" = 200'-0"
MAY 21, 2021

CAMPUS HILLS

301 Shuck's Road
Bel Air, MD 21015

31.15 Acres

Currently no building development. Site is partially developed with parking and Parks & Recreation play fields.

PROS

- Building potential does not impede or diminish any existing school facility use.
- Reasonably close to center of Harford County and access from MD22.
- Adjacent Parks Rec development includes "Miracle Field" suited for special needs.
- Adjacent Parks and Rec development includes a "Sensory Trail" already being used by John Archer programs.
- Close proximity to Harford Tech High School and Harford Community College for Future Links, and Nursing Programs.
- Close proximity to Prospect Mill Elementary School for peer connections.
- Current transportation routing can remain in place.

CONS

- No public water and sewer at the site.
- There is currently a developed plan for future elementary school on this site.

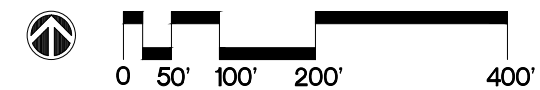
SITE LOCATION AND DISTANCE DATA

- Physical distance from existing John Archer School Bel Air, MD 21015 = 4,310.03 ft | Driving .8 miles / 3 minutes
- Physical distance from center of Bel Air (303 South Main Street) = 3.22 miles | Driving 4.4 miles / 9 minutes
- Physical distance from White Hall, MD 21161 = 18.84 miles | Driving 22.9 miles / 36 minutes
- Physical distance from Whiteford, MD 21160 = 11.7 miles | Driving 15.3 miles / 22 minutes
- Physical distance from Havre de Grace MD 21078 = 10.44 miles | Driving 12.4 miles / 20 minutes
- Mileage & Drive Time to Upper Chesapeake Medical Center Bel Air = 3.64 miles | Driving 6 miles / 14 minutes





JOHN ARCHER PROPOSED LOCATION -CAMPUS HILLS
301 Schuck's Road, Bel Air, Maryland 21015



SCALE: 1" = 200'-0"

MAY 21, 2021

SITE	Pro's
<p style="text-align: center;">Box Hill</p> <p>5/20 Recommend</p>	<ul style="list-style-type: none"> • New construction, no disruption to learning • This site appears to have similar flexibility for construction to Campus Hills • Proximity to WJES and not too far from PMMS/HS and Edgewood MS/HS • Provides increased access to community-based instruction (by foot) • Access to public utilities
	<p style="text-align: center;">Con's</p> <ul style="list-style-type: none"> • Isolated site, a "lab" site may be a better option • It is less centrally located and would likely increase transportation time/costs • Surrounding road infrastructure would be a challenge, area is congested • It is too far for students who live in the Northern end of the county • Takes away from the current fields and parks

SITE	Pro's
<p style="text-align: center;">Campus Hills</p> <p>17/20 Recommend</p>	<ul style="list-style-type: none"> • The amenities at this site are ideal • New construction, no disruption to learning • Ongoing traffic improvements in the area • Central location within the county, student transportation would not be affected • Access to the Sensory Trail • Provides the greatest ability to remain flexible during the educational specifications process • Supports the continued partnerships established with HTHS, HCC, and TUNE that greatly impact the student body • Proximity to hospital
	<p style="text-align: center;">Con's</p> <ul style="list-style-type: none"> • Traffic congestion, access is from busy road • Not connected to comprehensive school • Lacks co-location with a general education facility with MSDE unless one can be added to the campus

SITE	Pro's
<p style="text-align: center;">Ring Factory Campus</p> <p>10/20 Recommend</p>	<ul style="list-style-type: none"> • Proximity to a comprehension school is ideal, several schools nearby • Central Location • Proximity to hospital • Access to downtown Bel Air for work experience opportunities • Impact on student transportation times would be minimal
	<th data-bbox="510 537 1906 597" style="text-align: center;">Con's</th>
	<ul style="list-style-type: none"> • Traffic, area is congested • Loss of valuable fields for sports • No proximity to HTHS and HCC, and TUNE, loss of partnerships • Limited space • A co-location with a secondary school would be more preferred, as the majority of our student population is secondary age

SITE	Pro's
<p style="text-align: center;">William Paca/Old Post Road Campus</p> <p>2/20 Recommend</p>	<ul style="list-style-type: none"> • Potential to include in replacement building plans • Easy access to 95, 40, 7 and 24 • Close to businesses for partnerships • Proximity to a comprehension school is ideal
	<th data-bbox="510 1084 1906 1144" style="text-align: center;">Con's</th>
	<ul style="list-style-type: none"> • It is not centrally located, and does not provide good access to community-based instruction • Student transportation times will increase for northern end of the county • Lacks inclusive opportunities for older children, including work-based opportunities • Existing play fields for all students would be affected • A co-location with a secondary school is ideal, as the majority of our student population is secondary age • WPES timing of new/replacement building • Proximity to hospital

SITE	Pro's
<p>Woodbridge Center</p> <p>0/20 Recommend</p>	<ul style="list-style-type: none"> • N/A
	Con's
	<ul style="list-style-type: none"> • It is not centrally located, too isolated • It is not co-located with other schools • Proximity to hospital • Student transportation times will increase • Road infrastructure would be a challenge, Route 40 traffic • Limited space

SITE	Pro's
<p>Bel Air Middle Campus</p> <p>6/20 Recommend</p>	<ul style="list-style-type: none"> • Centrally located • Proximity to hospital • Co-located with other schools, inclusion opportunities for students of all levels • Work experience opportunities nearby
	Con's
	<ul style="list-style-type: none"> • Limited space, campus is already congested • Traffic and parking concerns, already crowded site • Increased student transportation times due to traffic, volume, and congestion • Limit plans for renovations and expansions for existing schools located on campus. • Existing play fields for all students would be affected

SITE	Pro's
John Archer School (HTHS Campus) 7/20 Recommend	<ul style="list-style-type: none"> Centrally located Proximity to hospital, HTHS and PMES Supports the continued partnerships already established with Harford Technical High School, HCC, and TUNE which greatly impact the student body Existing play fields for all students would be affected Renovation would be environmentally friendly and financially conservative
	Con's
	<ul style="list-style-type: none"> Facilities/ wastewater treatment issues Congested area, limited space Disruption to learning due to construction is not ideal (fragile student population)

All 7 sites were rated on a scale of 1-7 (1=Preferred Site through 7=Least Preferred Site)

Site	Ranking Average	Ranking Result	*Ranking Outlier 1	*Ranking Outlier 2
Campus Hills	2.05	1	1	1
Existing John Archer Site-HTHS	3.45	2	7	7
Ring Factory	3.8	3	7	7
Box Hill South	4.5	4	6	7
BAMS Campus	4.6	5	7	7
WPOPR Campus	5.25	6	7	7
Woodbridge Center	5.8	7	7	7

*Ranking Outliers-Two respondents did not utilize all of the numbers within the scale when they ranked the 7 locations, as shown in the chart above.



Siting Location Study for
THE JOHN
ARCHER SCHOOL
HARFORD COUNTY PUBLIC SCHOOLS



Introduction

- Existing John Archer School
 - Shared site with Harford Tech High and Prospect Mill Elementary
 - Constructed in 1971
 - Additions/renovations in 1981
- The previous John Archer School scope study was completed in 2009
 - Addition at the Bel Air Middle School located on the “Bel Air Campus”
 - Stand-alone facility with corridor connections to Bel Air Middle School
- The BCA Design Team is tasked with considering alternate site locations in Harford County



Approach

- Previous scope study is used as a guiding footprint
 - Approximately 125,000 square feet
 - Demonstrate site impact
- Seven sites are identified as possible locations
 - Three sites do not currently have an existing building
 - Four of the sites are existing school facility properties
- Location criteria of sites
 - Central for transportation
 - Proximity to Town of Bel Air
 - Proximity to Upper Chesapeake Medical Center
- Pros and Cons of each site



Sites Evaluated



Woodbridge Center
Edgewood, MD 21040

John Archer School
Bel Air, MD 21015

**William Paca/
Old Post Rd Elementary**
Abingdon, MD 21009

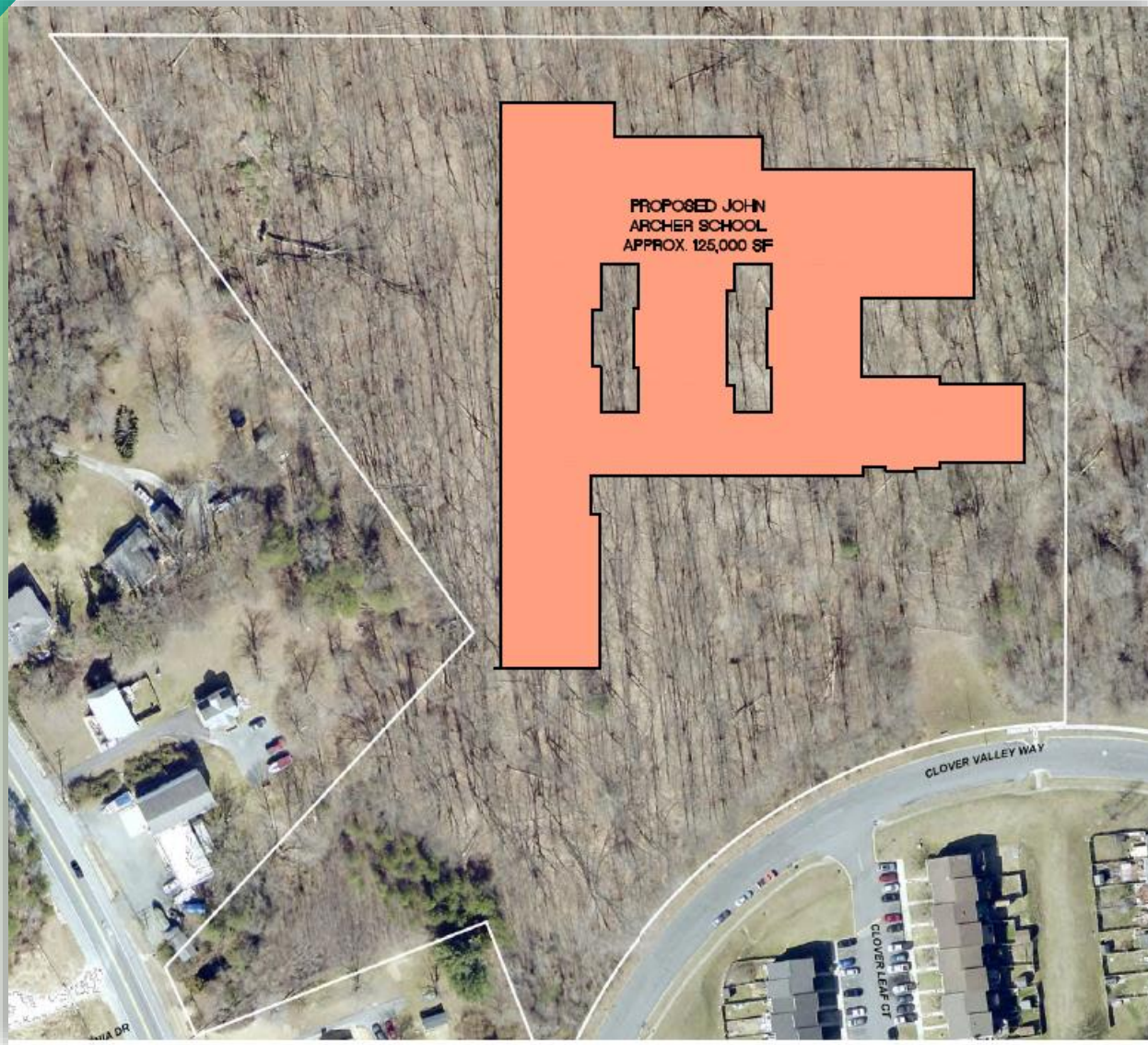
Box Hill South
Abingdon, MD 21009

Bel Air Campus
Bel Air, MD 21014

Ring Factory Elementary
Bel Air, MD 21014

Campus Hills
Bel Air, MD 21015

Woodbridge Center



PROS

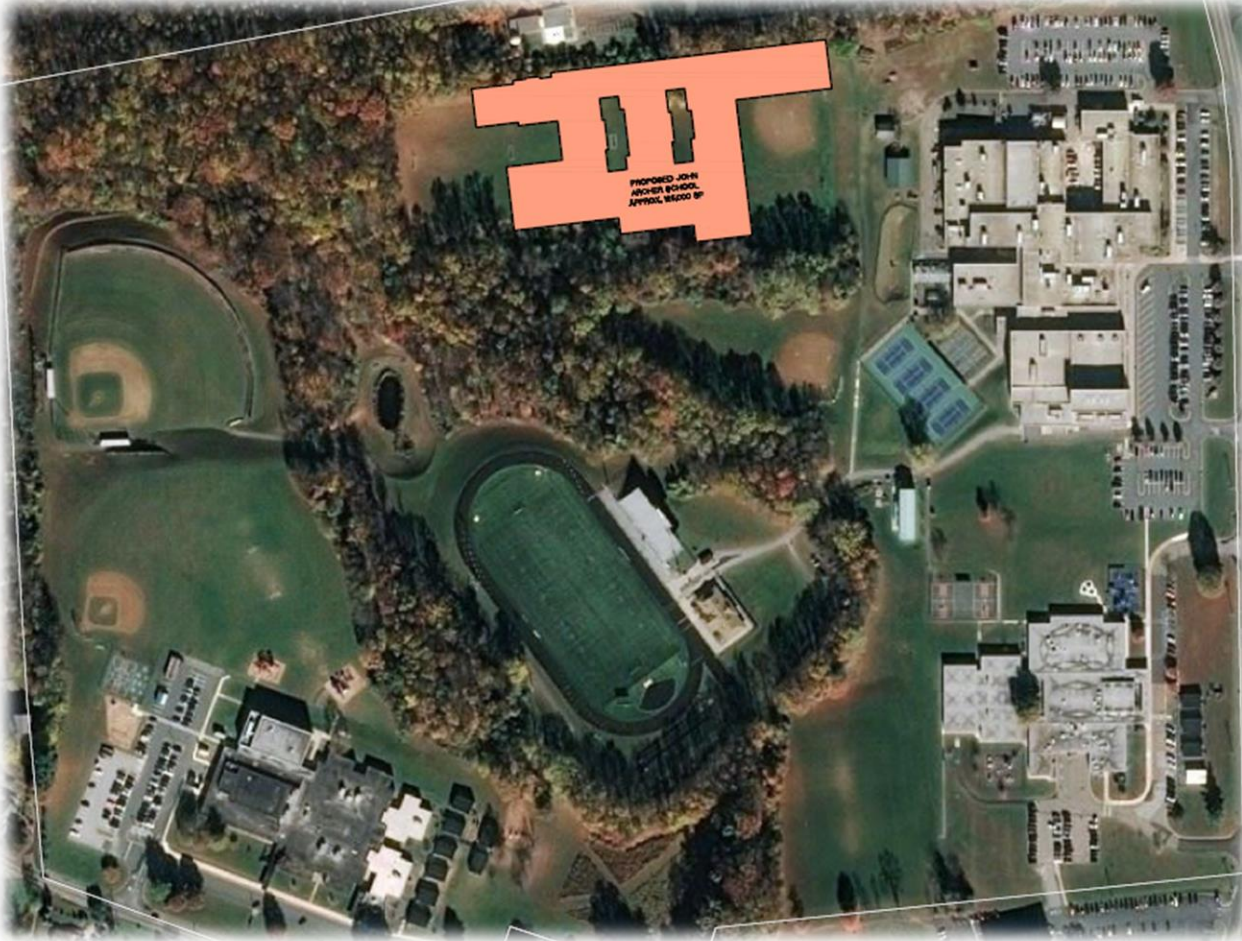
- ✓ Public utilities

CONS

- ✗ Limited play field area
- ✗ Not co-located
- ✗ Completely wooded
- ✗ Southerly location
- ✗ Within residential neighborhood
- ✗ Transportation capacity and routing
- ✗ Travel time from northern edges of County



Current John Archer Site



PROS

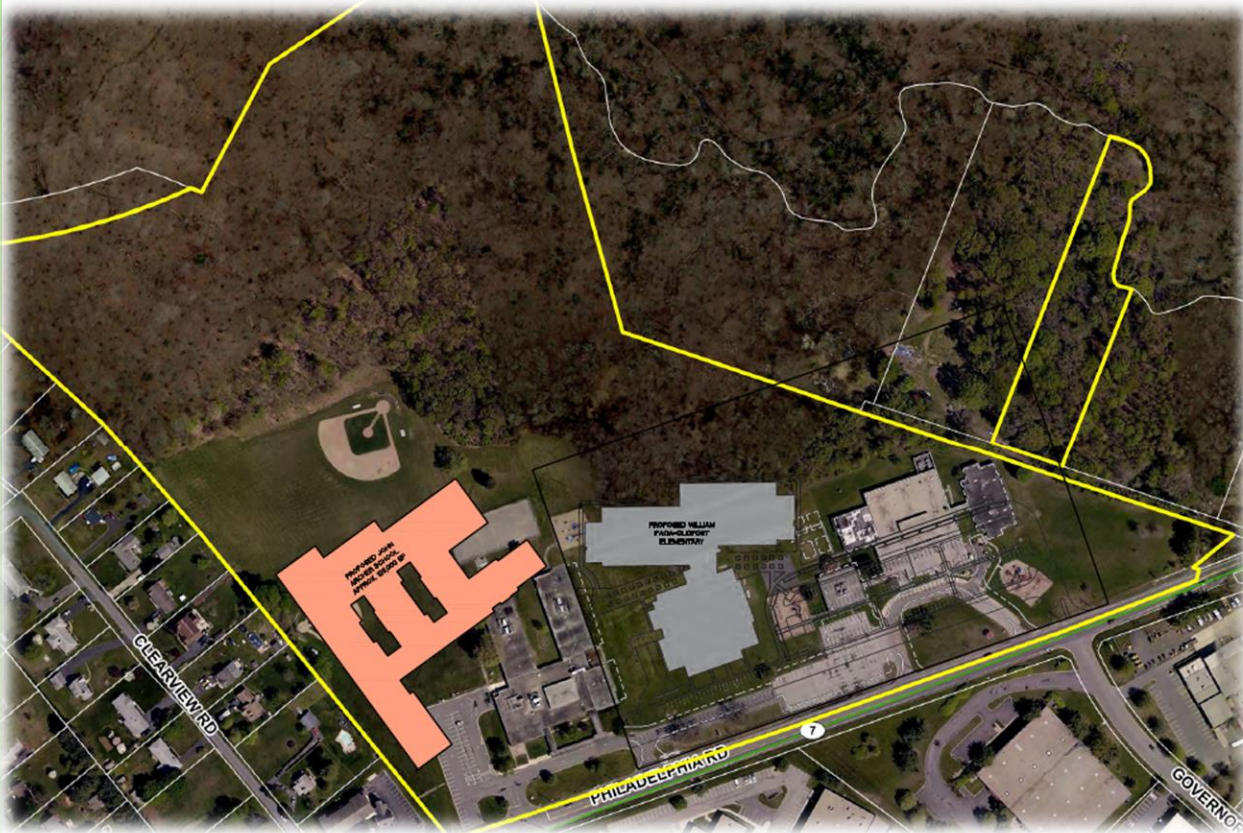
- ✓ Co-located with existing schools
- ✓ Proximity to Nursing Program at Harford Tech
- ✓ Proximity to Harford Community College

CONS

- ✗ Congested campus
- ✗ Connection to existing wastewater treatment plant
- ✗ Require demolition of existing facility
- ✗ Cannot repurpose existing location for other functions
- ✗ Septic reserve area
- ✗ Playfields move to busy traffic corner



William Paca/Old Post Rd Elementary



Pros

- ✓ Public utilities
- ✓ Accounts for planned replacement building
- ✓ Co-located with existing/ replacement school

Cons

- ✗ Limited play field area
- ✗ Construction phasing and timing with replacement school construction
- ✗ Transportation capacity and routing
- ✗ Travel time from northern edges of County



Box Hill South



Pros

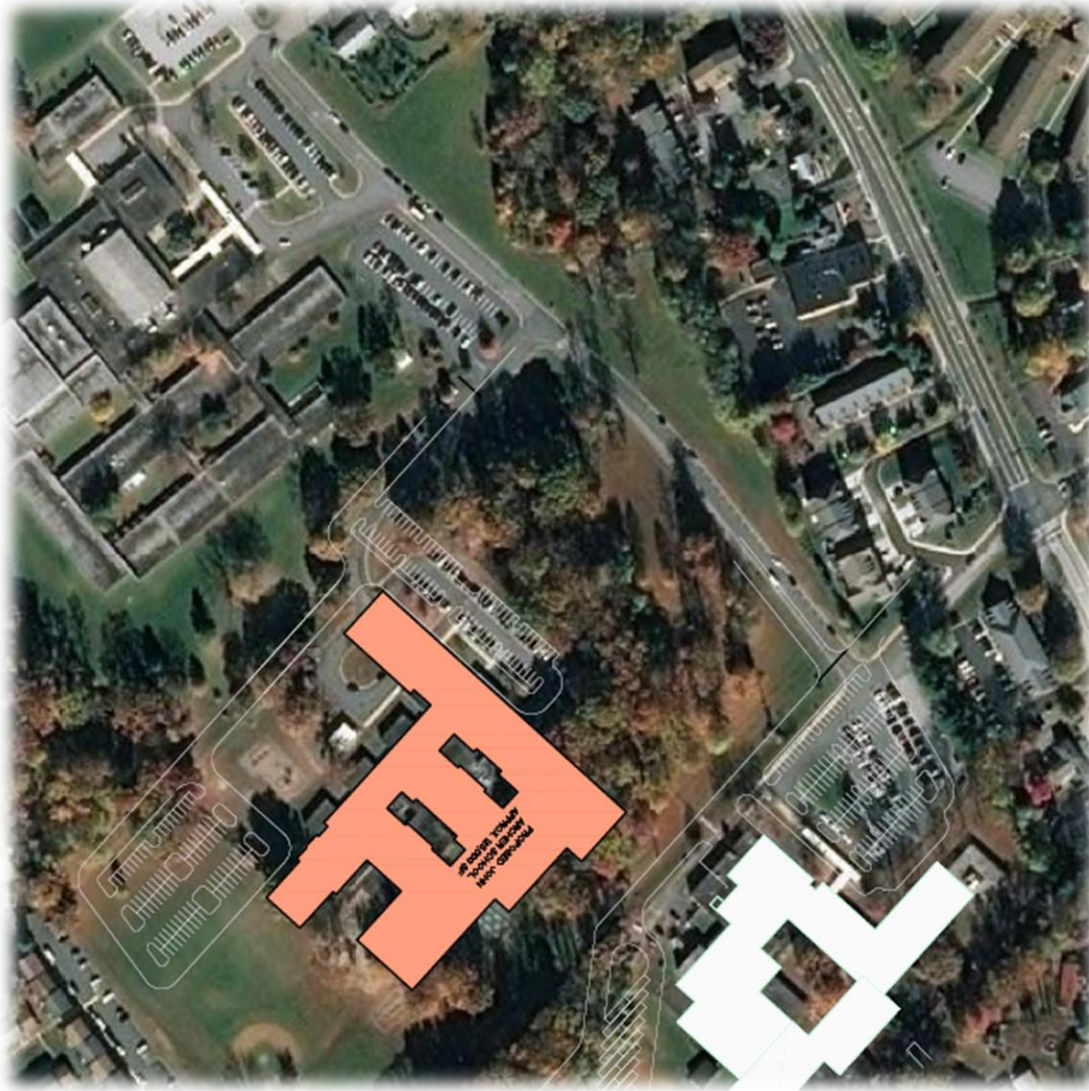
- ✓ Does not impede or diminish any existing school facility use
- ✓ Public utilities
- ✓ Access from MD24 and MD924

Cons

- ✗ Displace Parks and Recreation Fields
- ✗ Not co-located with another school
- ✗ Transportation capacity and routing
- ✗ Travel time from northern edges of County



Bel Air Campus



Pros

- ✓ Public utilities
- ✓ Co-located with existing schools
- ✓ Bel Air High School Bio-Med Signature Program
- ✓ Future Link program transportation
- ✓ Central location
- ✓ Access to Upper Chesapeake Medical Center

Cons

- ✗ Congested campus
- ✗ Traffic volume concerns
- ✗ Diminish playfields for Homestead/Wakefield Elementary School
- ✗ Severely limit renovation/expansion possibilities for Bel Air Middle School

Ring Factory Elementary



Pros

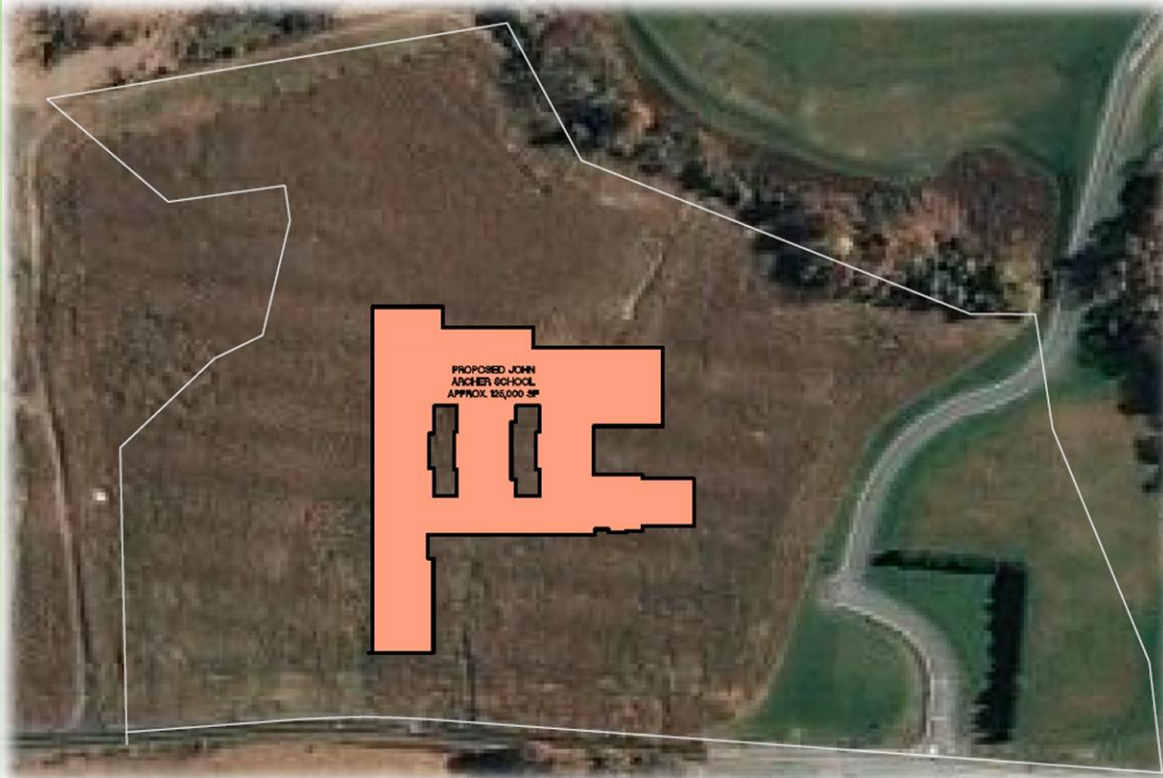
- ✓ Public utilities
- ✓ Co-located with an existing school
- ✓ Central location
- ✓ Access from MD924
- ✓ Access to Upper Chesapeake Medical Center
- ✓ Transportation routing impact will be minimal

Cons

- ✗ Remove at least half of existing school playfields
- ✗ Traffic volume and congestion



Campus Hills



PROS

- ✓ Does not impede existing school use
- ✓ Central location
- ✓ Access from MD22
- ✓ Parks Rec “Miracle Field” & “Sensory Trail”
- ✓ Proximity to Harford Technical High School, Harford Community College, and Prospect Mill Elementary School
- ✓ Current transportation

CONS

- ✗ No public water and sewer
- ✗ Existing developed plan for future elementary school



Staff Survey

All 7 sites were rated on a scale of 1-7 (1=Preferred Site through 7=Least Preferred Site)

Site	Ranking Average	Ranking Result	*Ranking Outlier 1	*Ranking Outlier 2
Campus Hills	2.05	1	1	1
Existing John Archer Site-HTHS	3.45	2	7	7
Ring Factory	3.8	3	7	7
Box Hill South	4.5	4	6	7
BAMS Campus	4.6	5	7	7
WPOPR Campus	5.25	6	7	7
Woodbridge Center	5.8	7	7	7

*Ranking Outliers-Two respondents did not utilize all of the numbers within the scale when they ranked the 7 locations, as shown in the chart above.

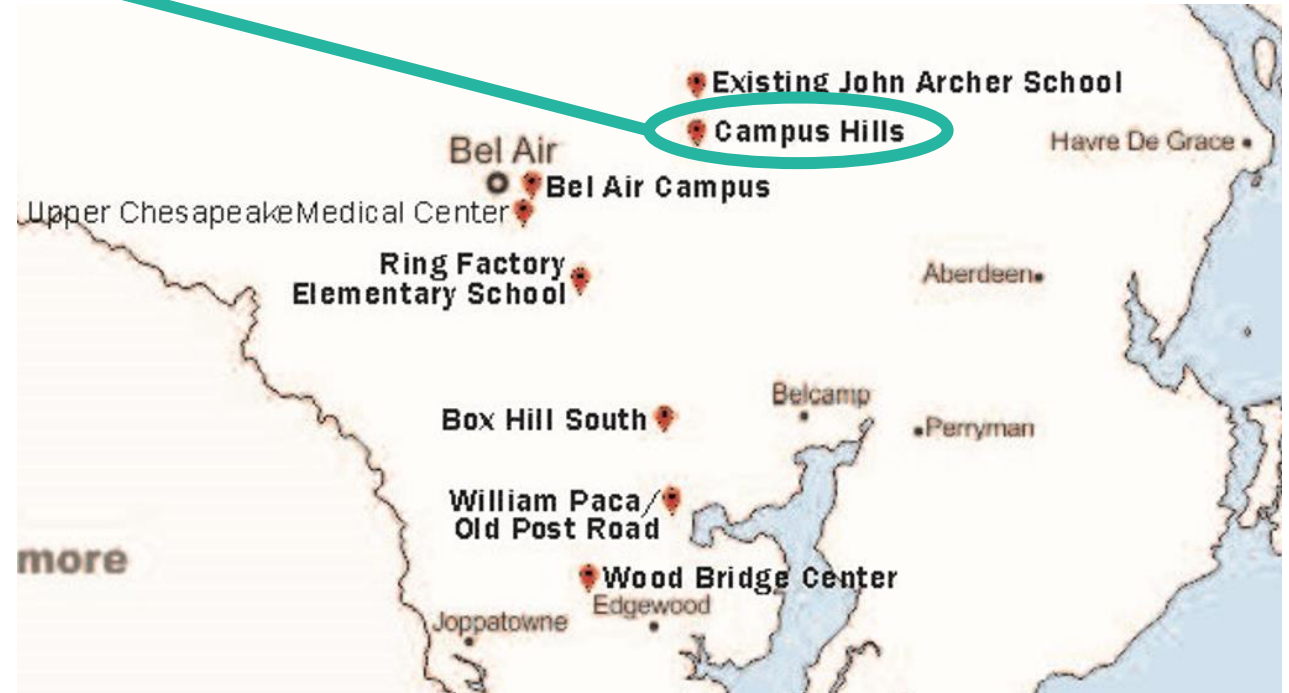


Recommendation

Campus Hills

Highest Ranked Site

- Site evaluation
- Transportation
- Central location
- Staff rating
- Proximity to other schools and HCC





Questions and Discussion

The Superintendent of Schools recommends
that the Board of Education approve the
Campus Hills Site as the location of the John
Archer Replacement School.