

BOARD OF EDUCATION OF HARFORD COUNTY
INFORMATIONAL REPORT AND DECISION ON
THE NEW COMBINATION HARFORD ACADEMY
AND ELEMENTARY SCHOOL
SCHEMATIC DESIGN

December 16, 2024

Background Information:

Harford Academy (HA), built in 1971, is the only public day school in Harford County for students ages 3 to 21 with severe disabilities. A 2009 study identified building deficiencies and the need for modernization, but renovation is not feasible due to the specialized needs of the students. The HA project, deferred for fiscal reasons, is now the county's top capital priority.

Timeline of Board of Education (BOE) Action:

- August 2021: BOE approved replacing the school at the Campus Hills site.
- February 2022: BOE approved combining Harford Academy with an elementary school to address capacity and funding trends.
- December 2022: HCPS submitted a waiver request to the Maryland Department of Planning (MDP) for the Campus Hills site. It was not approved.
- June 2023: BOE approved education specifications (Ed Spec) for the new school.
- February 2024: BOE approved the new site for the school, located near the Eva Mar community on Route 543.
- September 2024: BOE approved the design contract with Grimm + Parker Architects.
- November 2024: BOE approved pre-construction services with the construction management (CM) firm.

The BOE allocated \$16 million in the FY 2024 Capital Improvement Budget for planning and design services. The FY 2026 Capital Improvement Budget Request includes local planning approval, with funding from both state and local sources. The project will proceed with engineering, design, and construction services to finalize plans and secure construction pricing.

Discussion:

Utilizing the education specifications, Grimm + Parker Architects has collaborated with key stakeholders from both the Public Day School and the Elementary School to develop a schematic design (SD) for the new facility. During the SD phase, the overall concept and vision for the project were established. This phase sets the direction for the design, including the spatial layout, key design elements, and project scope. Grimm + Parker Architects developed foundation drawings and conceptual plans that outline the size, shape, and flow of spaces within the proposed school facility.

This presentation will provide the Board of Education and the community with an overview of the schematic design layout, highlighting key design themes for the new facility. Following the

presentation, the Board will be asked to approve the schematic design for submission to the State. Once approved, the design team will move into the Design Development phase, during which the design will be further refined and more detailed plans will be developed, including specifications for materials, systems, and construction methods. Construction is anticipated to begin in March 2026, with completion expected in August 2028.

Superintendent's Recommendation:

The Superintendent of Schools recommends that the Board of Education approve the schematic design for the New Combination Harford Academy and Elementary School for submission to the State.



HARFORD ACADEMY + ES

Schematic Design Board of Education Meeting
December 16, 2024



Agenda

- Guiding Principles
- Schedule Update
- Design Updates
- Recommendation



Harford Academy - Guiding Principles

Learning Happens Everywhere

- “Every space is a learning space. Every space.”
- Encourage Independence
- Integrate Model School + Observation

Spaces Where Students Belong

- Shared Experience, Shared Spaces
- Inclusion, Dignity, + Equity
- Universal Access + Barrier Free

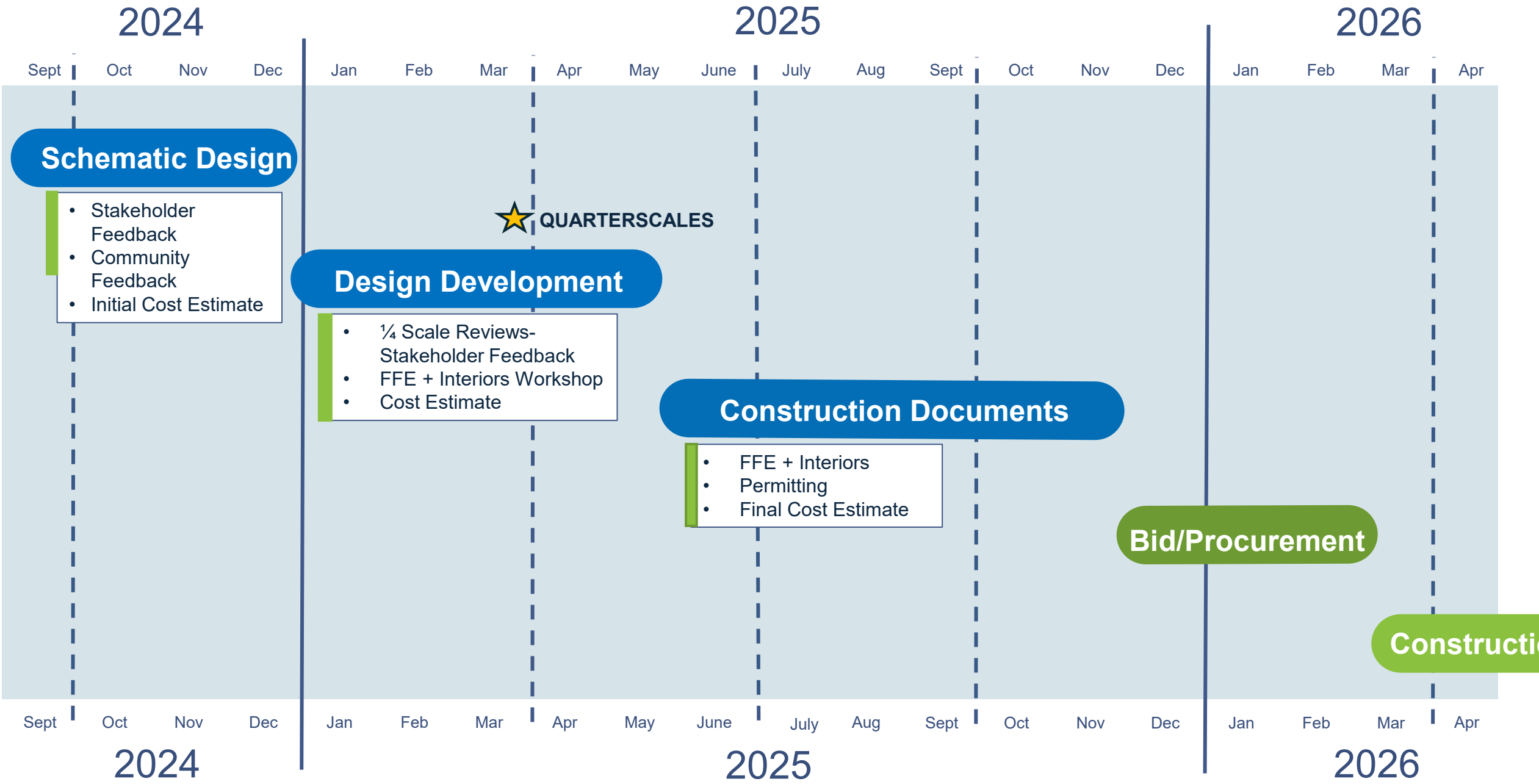
Quality of Environment

- Connection to Nature + Daylighting
- Spaces that make students feel like they matter
- Inspiring and Energetic
- Whole Child Wellness

Building a Support Network

- Sharing Resources
- Parent + Community Support
- Professional Development/Retention

Schedule Update



2024

2025

2026

Sept Oct Nov Dec

Jan Feb Mar Apr May June July Aug Sept Oct Nov Dec

Jan Feb Mar Apr

Schematic Design

- Stakeholder Feedback
- Community Feedback
- Initial Cost Estimate

Design Development

- 1/4 Scale Reviews-Stakeholder Feedback
- FFE + Interiors Workshop
- Cost Estimate

★ QUARTERSCALES

Construction Documents

- FFE + Interiors
- Permitting
- Final Cost Estimate

Bid/Procurement

Construction

Sept Oct Nov Dec

Jan Feb Mar Apr May June July Aug Sept Oct Nov Dec

Jan Feb Mar Apr

2024

2025

2026

Site Plan



Floor Plan

First Floor



Floor Plan

Second Floor



Design Themes

Inclusion, Dignity, + Equity

Separate, co-located programs maintain dignity for all students and encourage inclusion when possible

Area for shared dining experiences

Area for shared art experiences

Area for shared media experiences



Design Themes

Integrate Model School + Observation

Observation rooms at threshold provide for observation without disruption.

Integrated observation rooms in learning neighborhoods provide flexible use for both Model School and Elementary

Model School entry direct access through secure vestibule.



Design Themes

Parent + Community Support

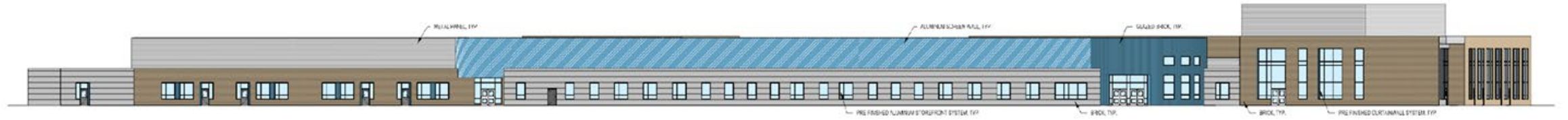


Outdoor spaces available for community-wide use

Two indoor gymnasiums available for community use

Secure zoning promotes afterhours use without accessing academic areas

Exterior Character



A West Elevation



B North Elevation



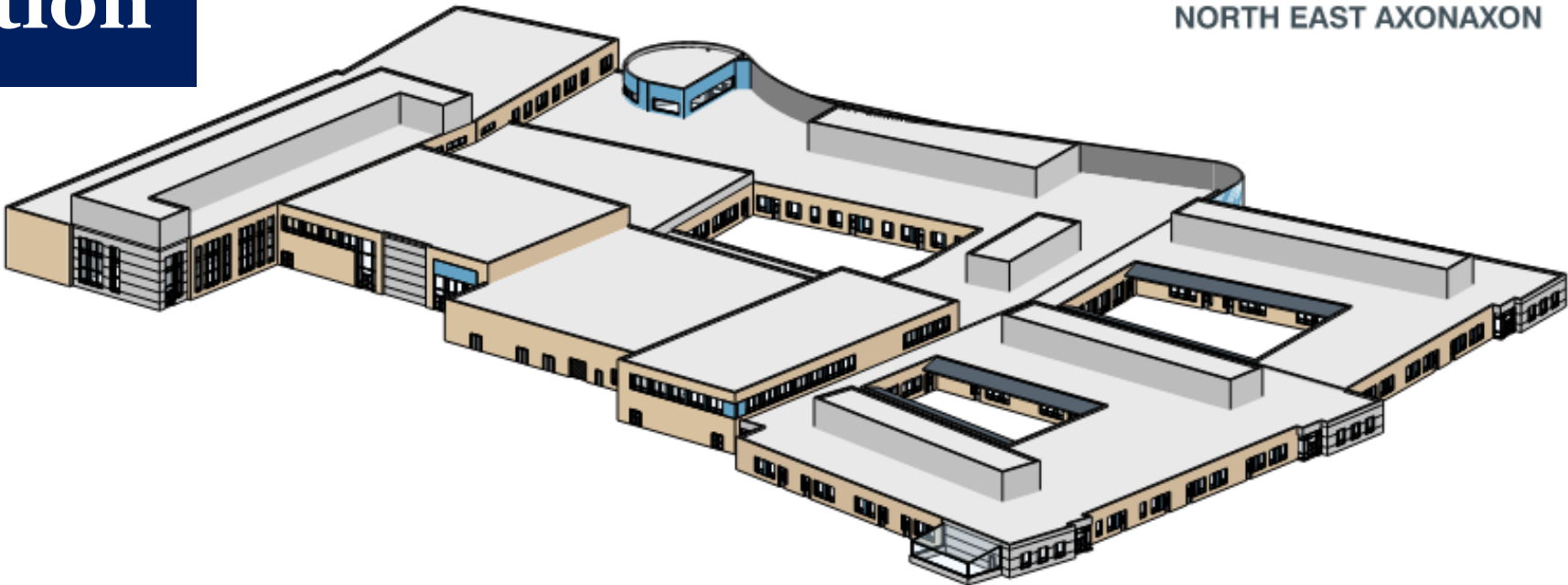
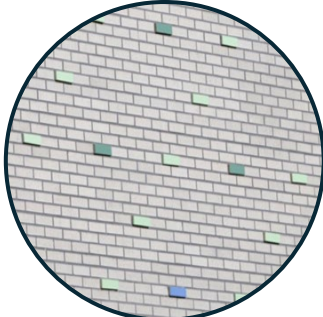
C East Elevation



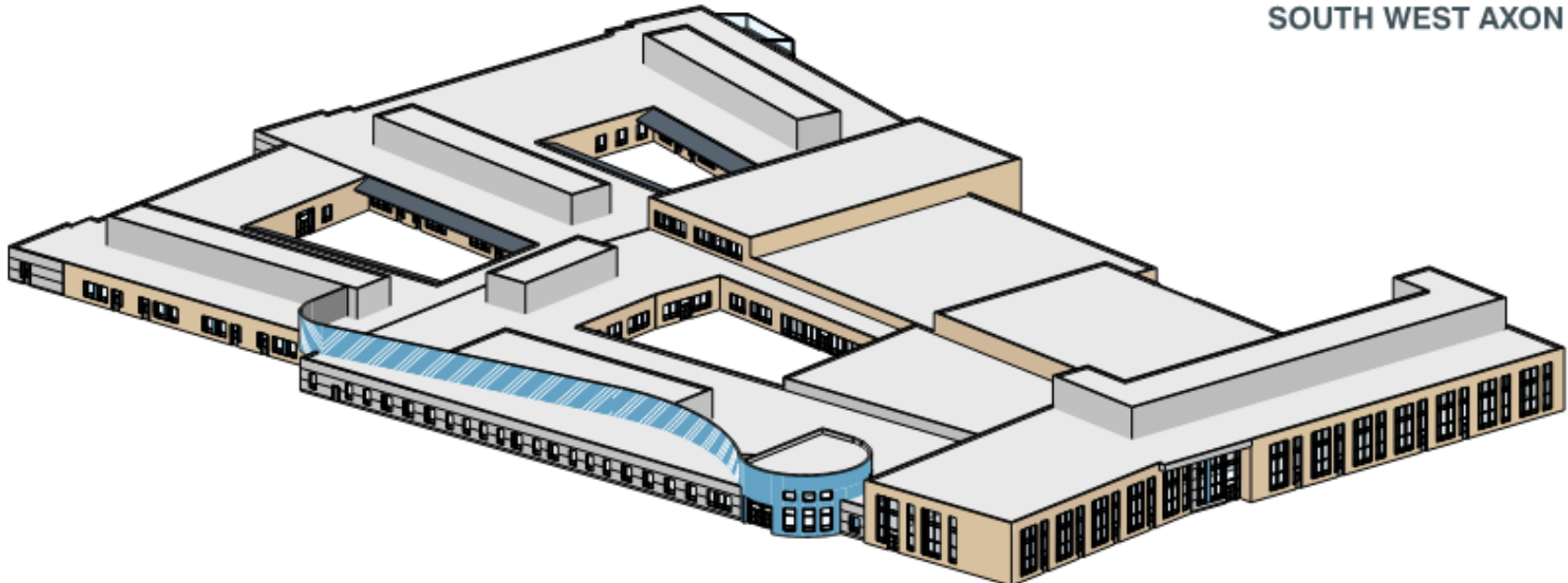
D South Elevation



Material Exploration



NORTH EAST AXONAXON



SOUTH WEST AXON

Recommendation



Project Highlights

- Co-located programs celebrate opportunities for inclusion while maintaining dignity for all students.
- Barrier-free design inside and out provides equity across learning environments.
- Variety of learning spaces allow students to exercise choice to understand how they learn best.

School Capacity

Elementary School:	600
Harford Academy:	150
Model School:	17

Square Footage

222,944 SF

Recommendation

The Superintendent of Schools recommends that the Board of Education approve the schematic design for the New Combination Harford Academy and Elementary School for submission to the State.



Thank You