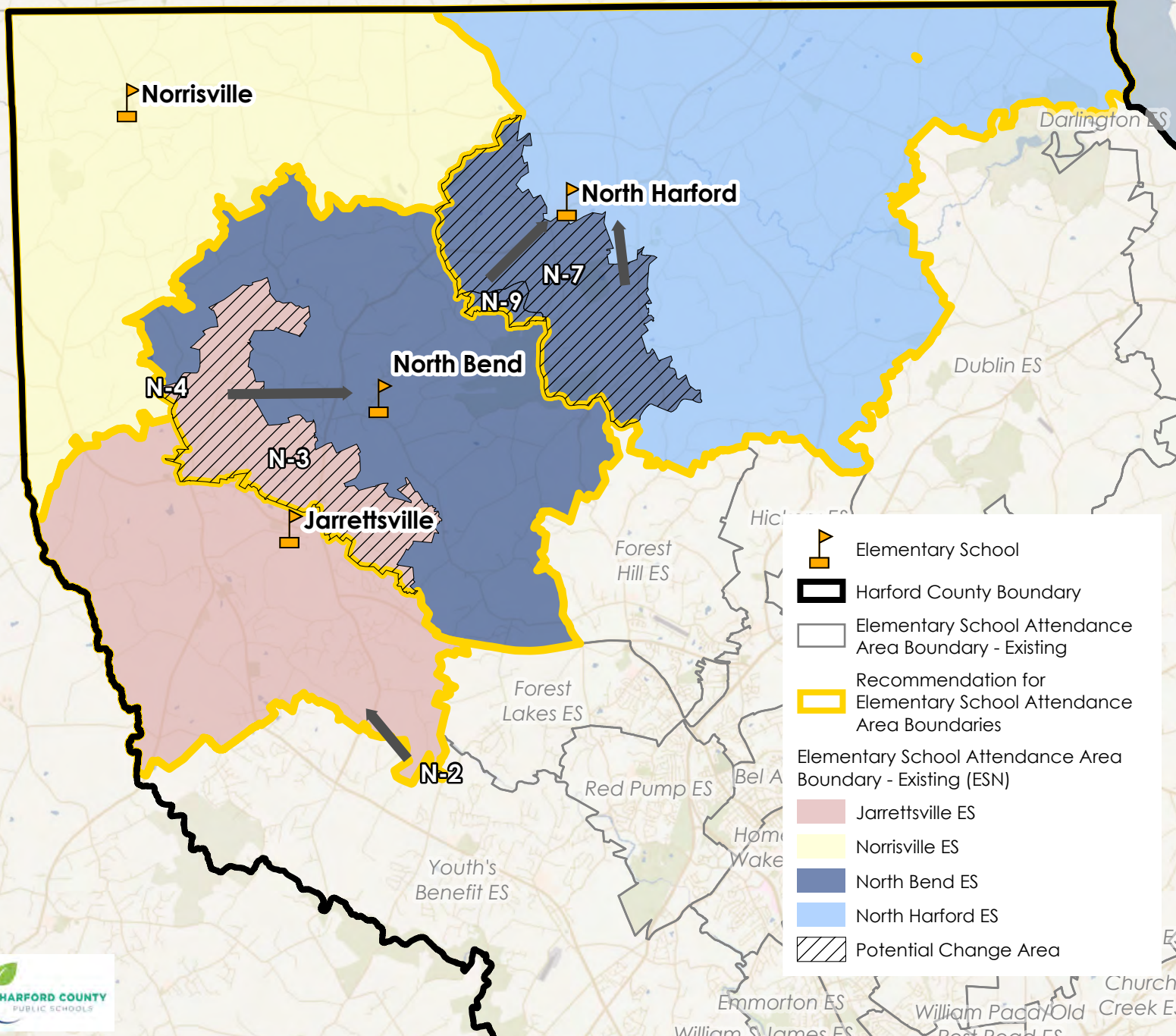
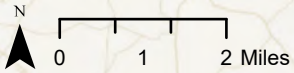







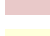









# District Overview - Recommendation

## Elementary School North (ESN)





-  Elementary School
-  Harford County Boundary
-  Elementary School Attendance Area Boundary - Existing
-  Recommendation for Elementary School Attendance Area Boundaries
-  Elementary School Attendance Area Boundary - Existing (ESN)
-  Jarrettsville ES
-  North Bend ES
-  North Harford ES
-  Potential Change Area

# Elementary School Boundary Recommendation - Jarrettsville ES

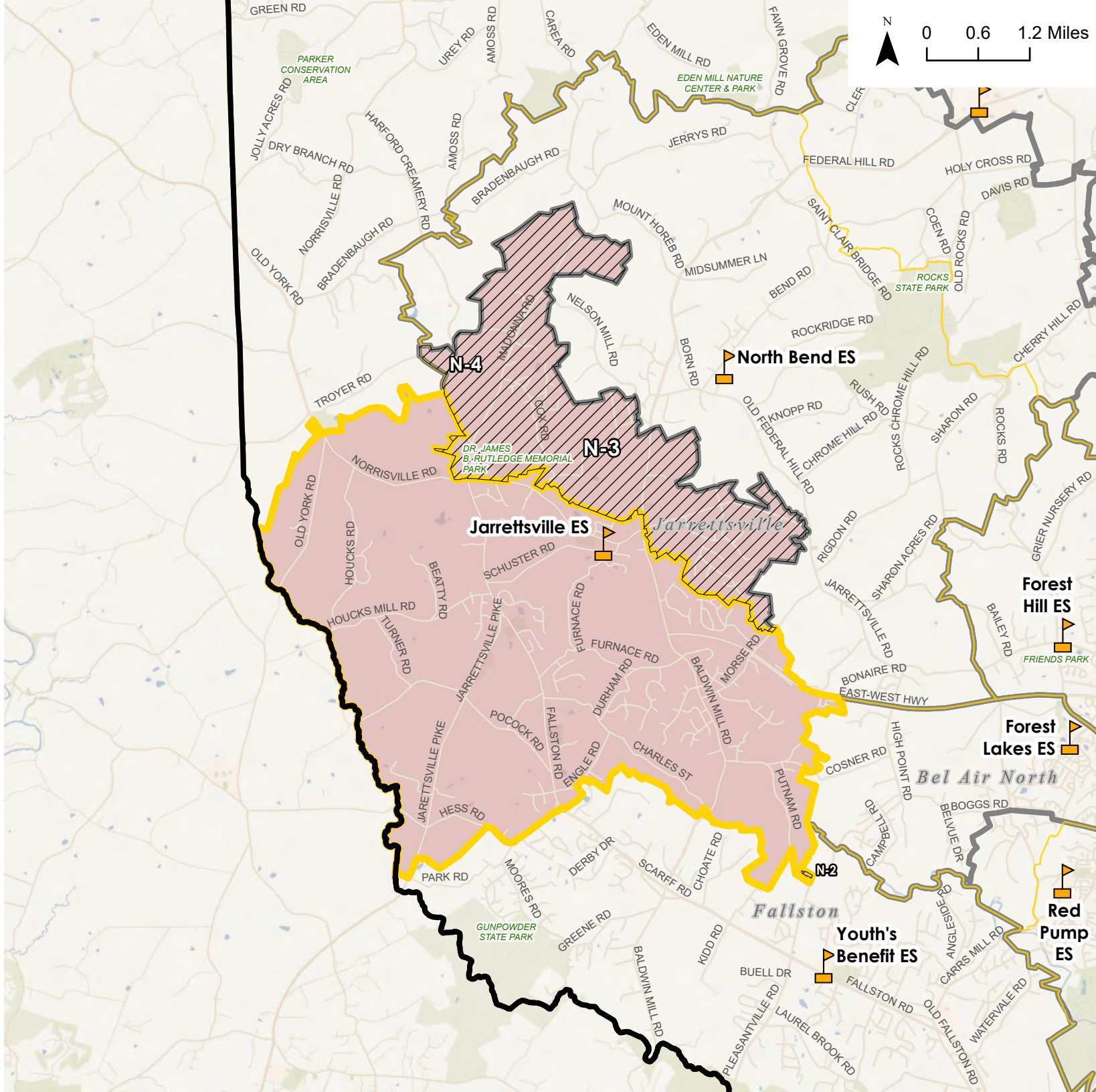
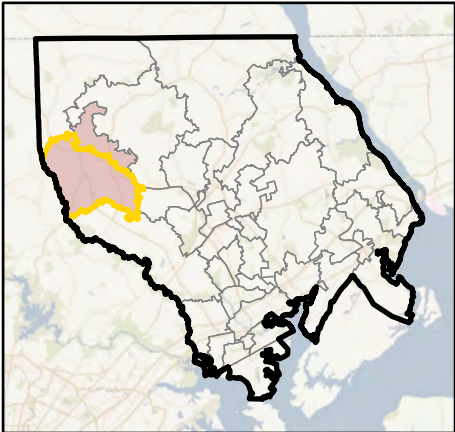
-  Elementary School
-  District Boundary
-  Advisory Team
-  Elementary School Boundary
-  Boundary Recommendation for Jarrettsville ES
-  Potential Change Area

## Current Configuration - Elementary Schools

-  Jarrettsville ES Current Attendance Area
-  Elementary School Attendance Area Boundary Outline - Current Attendance Area





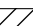



Potential Change Areas:  
 N-4: From Jarrettsville ES to North Bend ES  
 N-3: From Jarrettsville to North Bend  
 N-2: From Youth's Benefit ES to Jarrettsville ES

### Overview Map

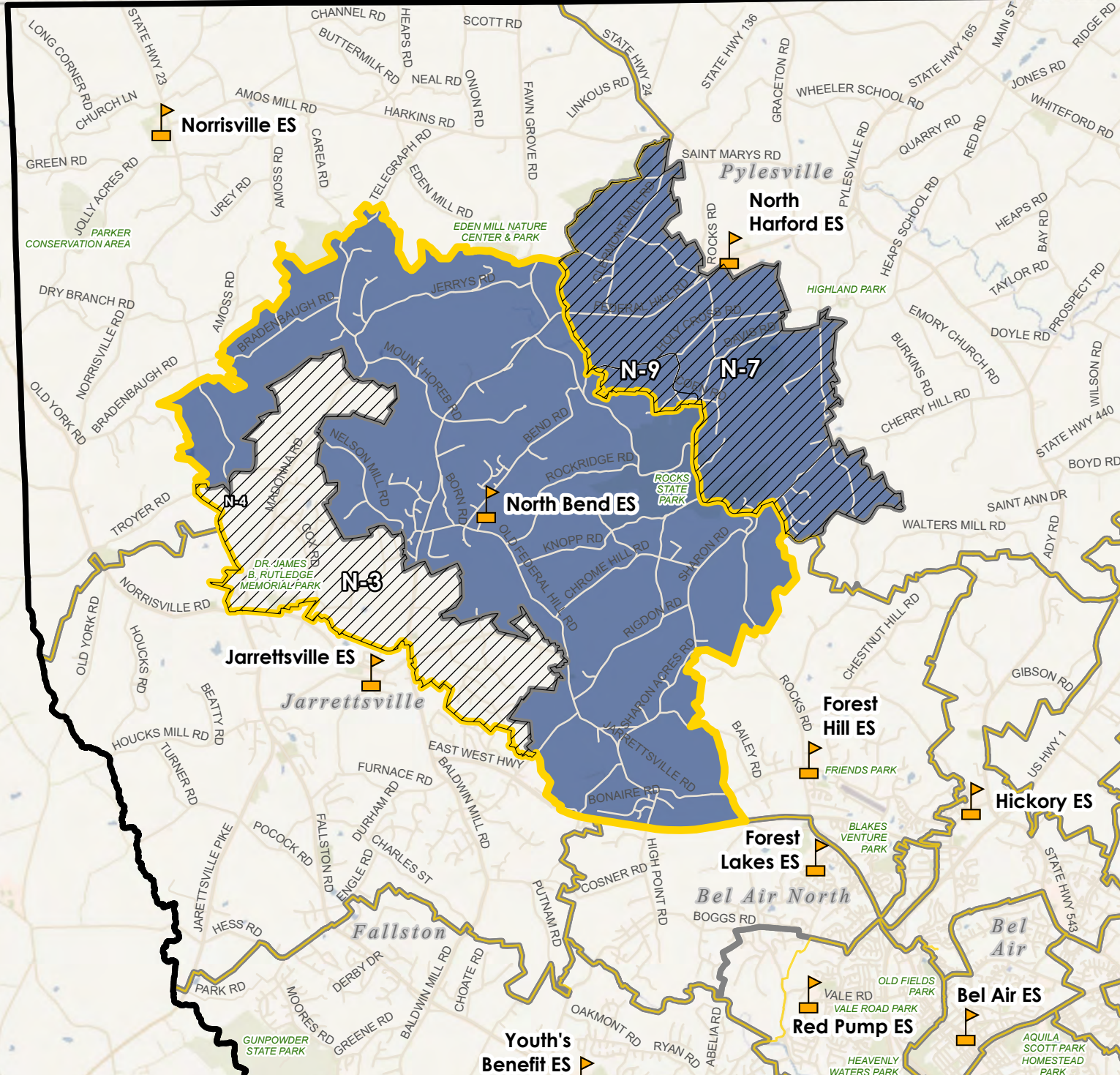
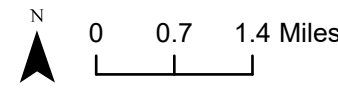




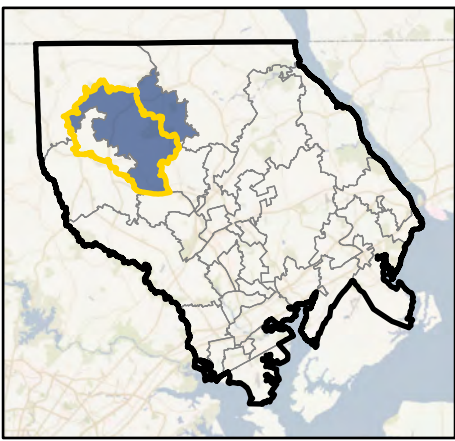
# Elementary School Boundary Recommendation - North Bend ES

-  Elementary School
-  District Boundary
-  Advisory Team Elementary School Boundary
-  Boundary Recommendation for North Bend ES
-  Potential Change Area
- Current Configuration - Elementary Schools**
-  North Bend ES Current Attendance Area
-  Elementary School Attendance Area
-  Boundary Outline - Current Attendance Area

Potential Change Areas:  
 N-7: From North Bend ES to North Harford ES  
 N-9: From North Bend ES to North Harford ES  
 N-4: From Jarrettsville ES to North Bend ES  
 N-3: From Jarrettsville ES to North Bend ES




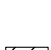


## Overview Map







**Elementary School Boundary Recommendation - North Harford ES**

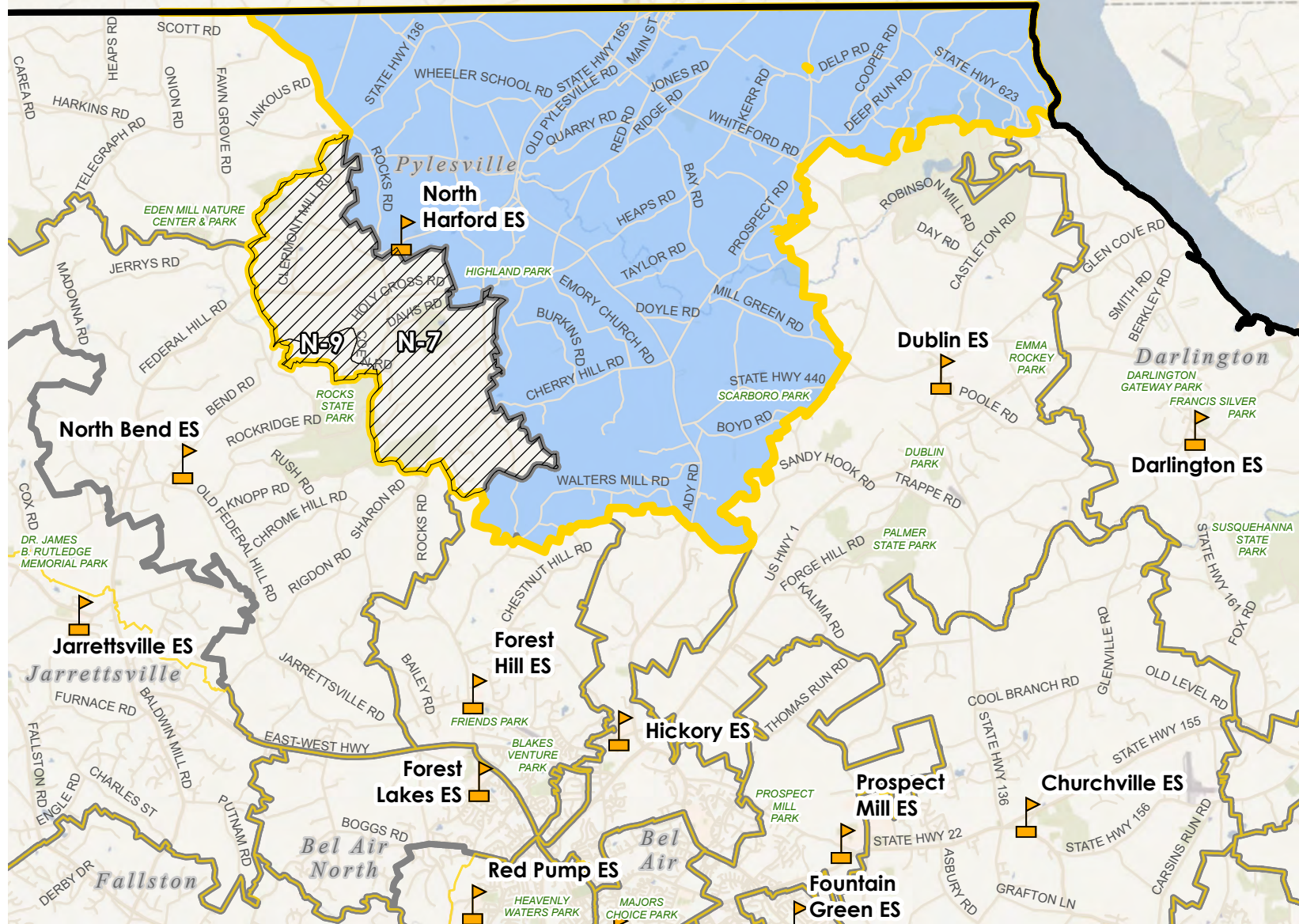
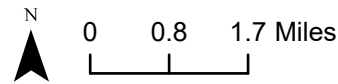
-  Elementary School
-  District Boundary
-  Advisory Team Elementary School Boundary
-  Potential Change Area

**Current Configuration - Elementary Schools**

-  North Harford ES Current Attendance Area
-  Elementary School Attendance Area Boundary Outline - Current Attendance Area

Potential Change Areas:

- N-7: From North Bend ES to North Harford ES
- N-9: From North Bend ES to North Harford ES

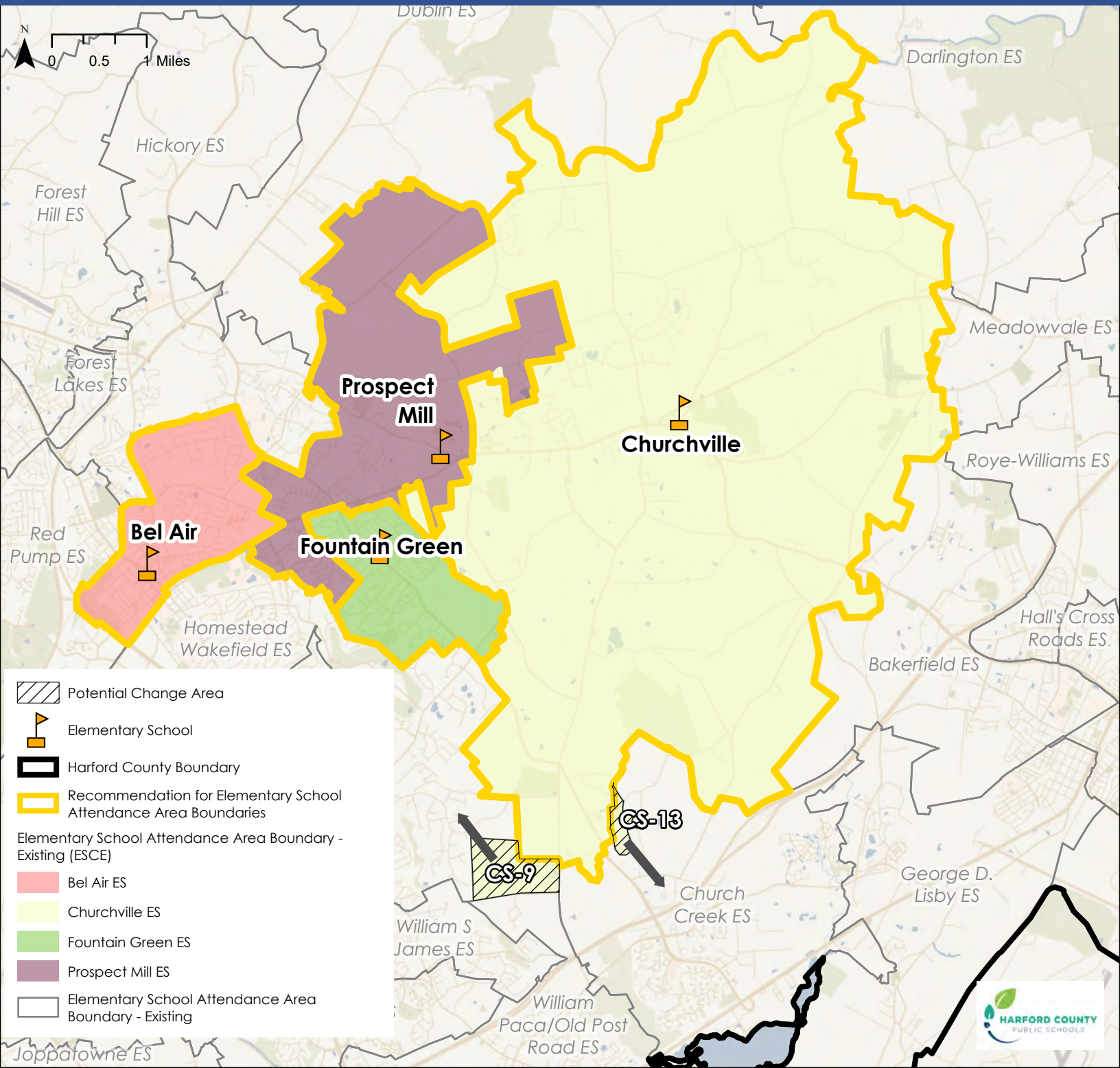


**Overview Map**









# District Overview - Recommendation Elementary School Center East (ESCE)

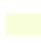





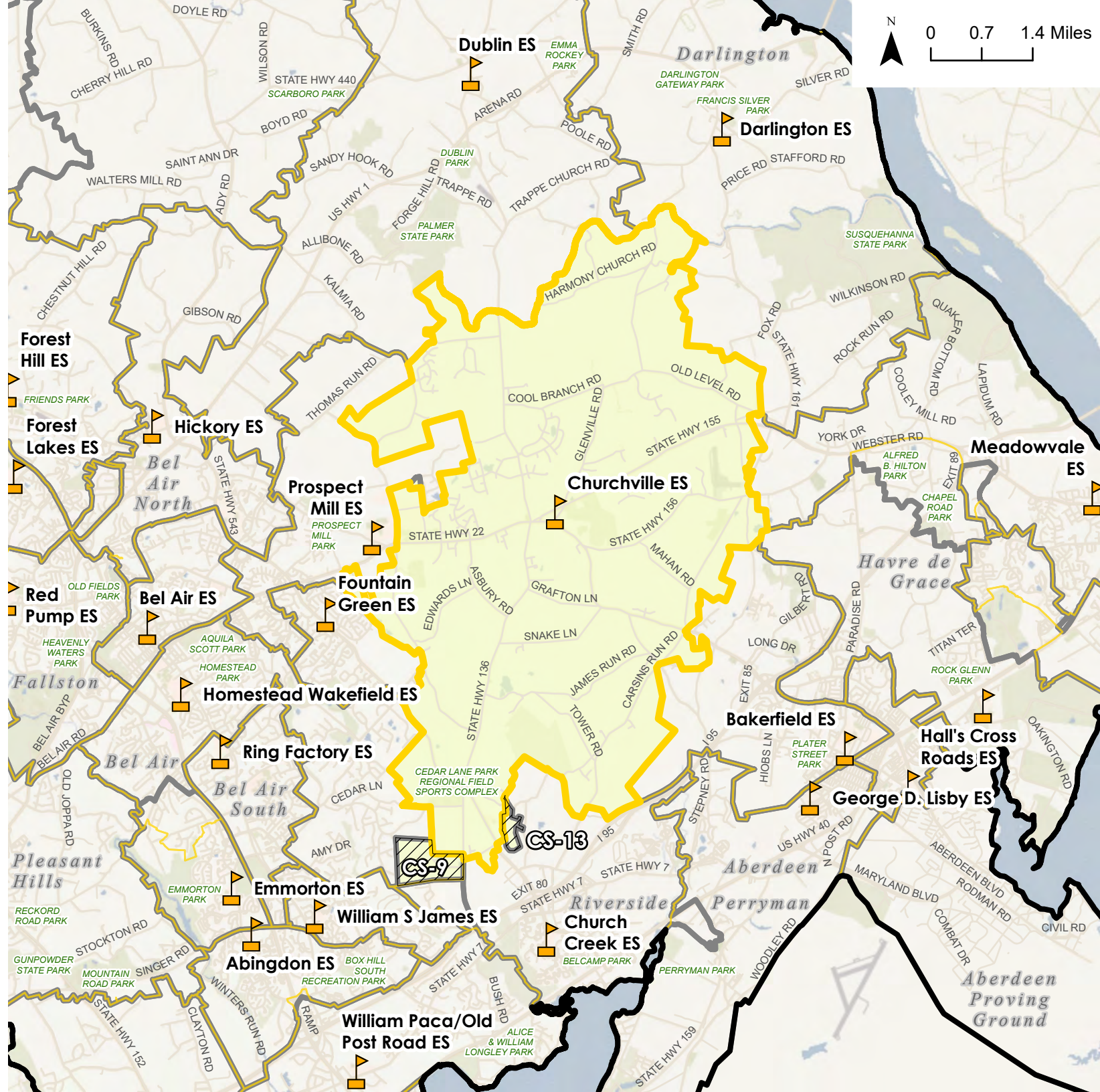
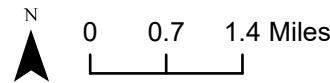
### Elementary School Boundary Recommendation - Churchville ES

-  Elementary School
-  District Boundary
-  Advisory Team Elementary School Boundary Recommendation for Churchville ES
-  Potential Change Area

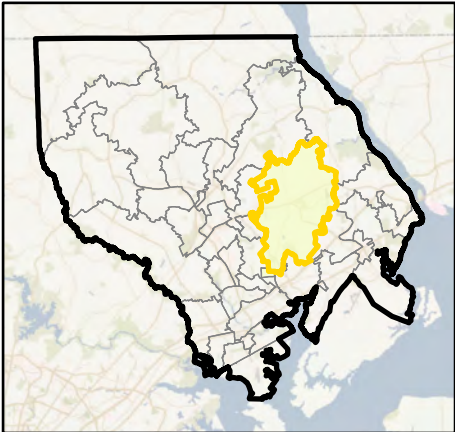
### Current Configuration - Elementary Schools

-  Churchville ES Current Attendance Area
-  Elementary School Attendance Area Boundary Outline - Current Attendance Area

Potential Change Areas:  
 CS-9: From Churchville ES to Homestead Wakefield ES  
 CS-13: From Churchville ES to Church Creek ES

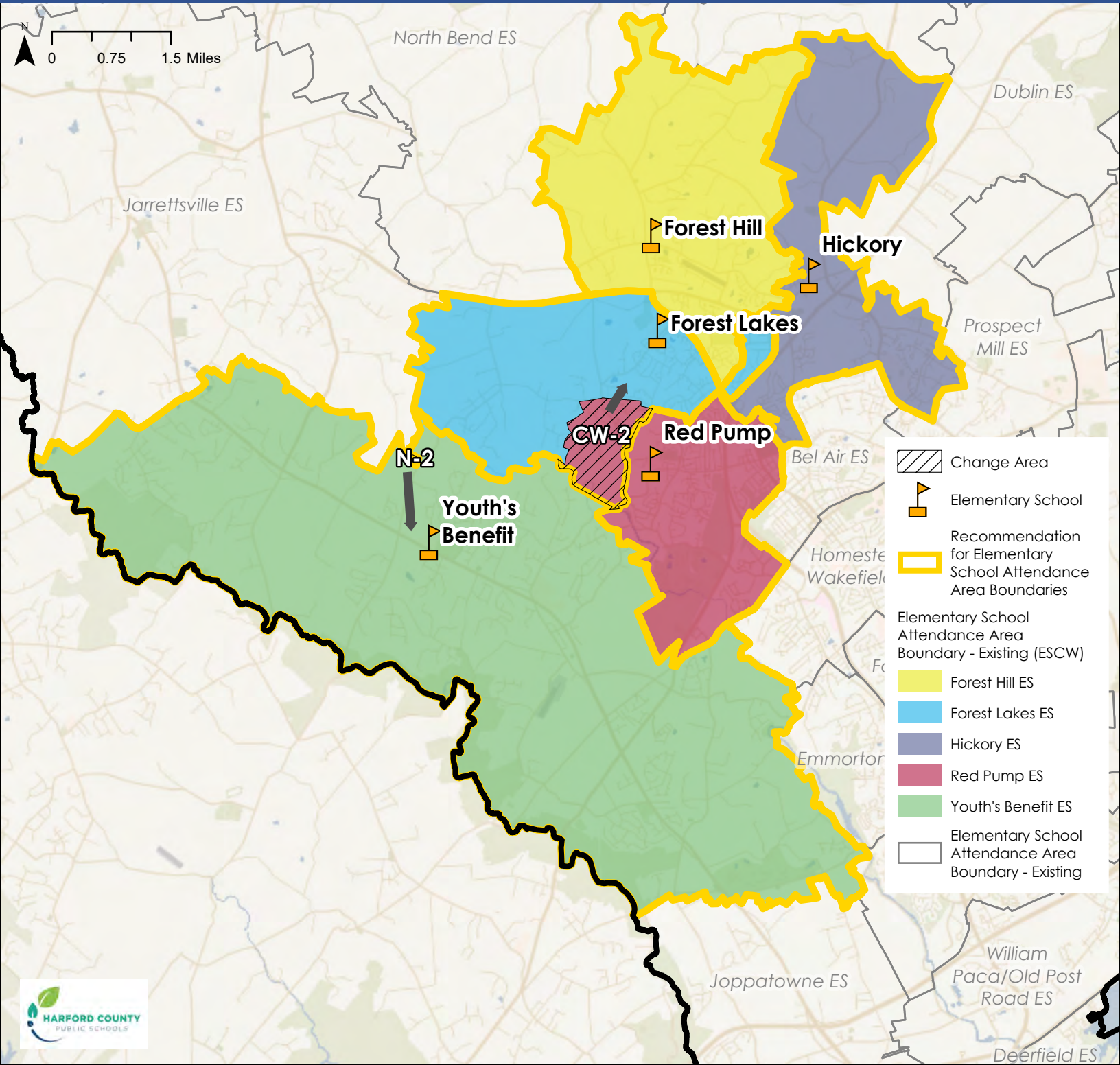


### Overview Map







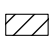





# District Overview - Recommendation Elementary School Center West (ESCWW)



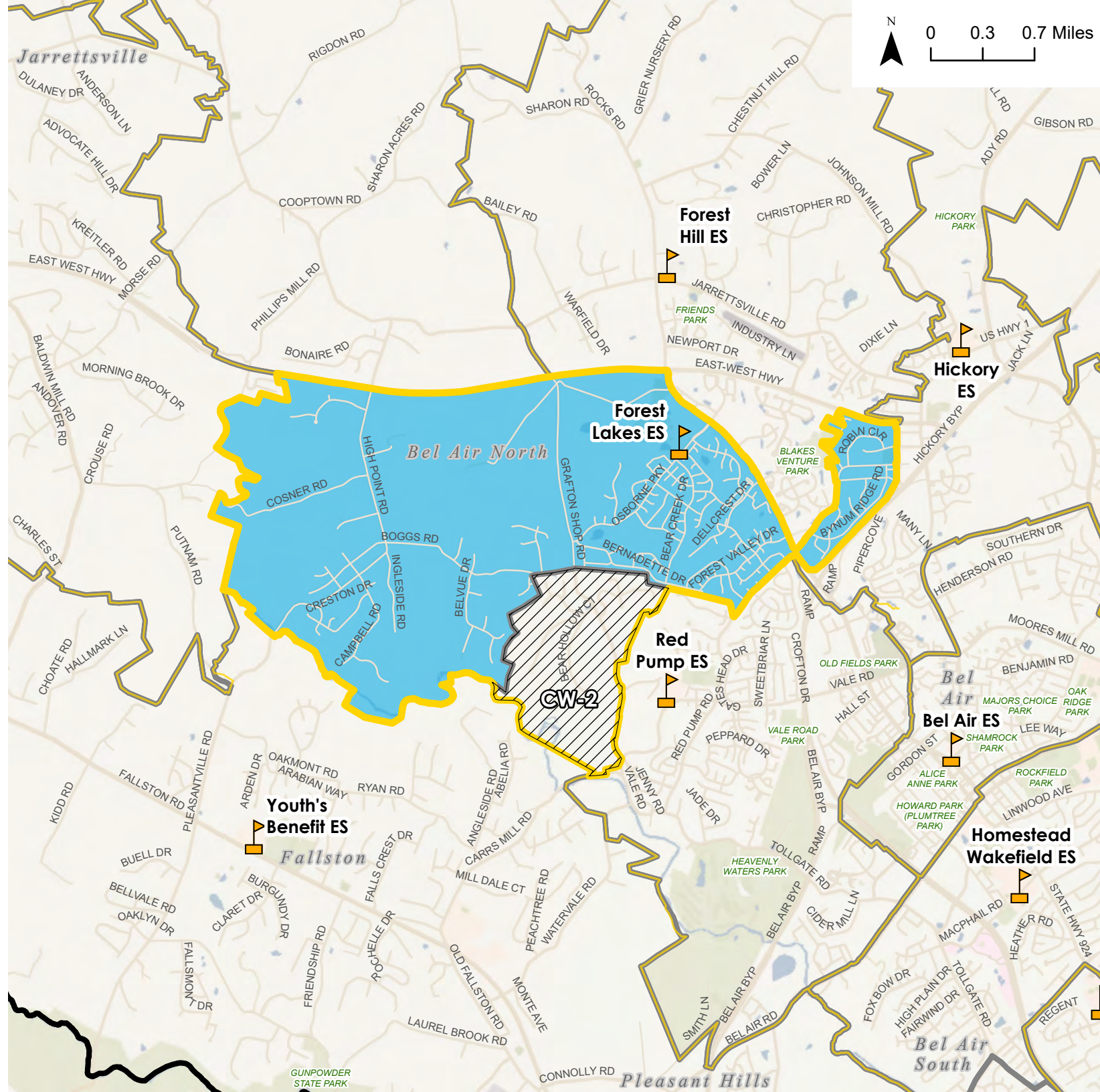
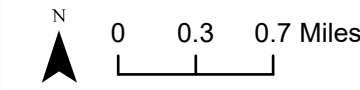


**Elementary School Boundary Recommendation - Forest Lakes ES**

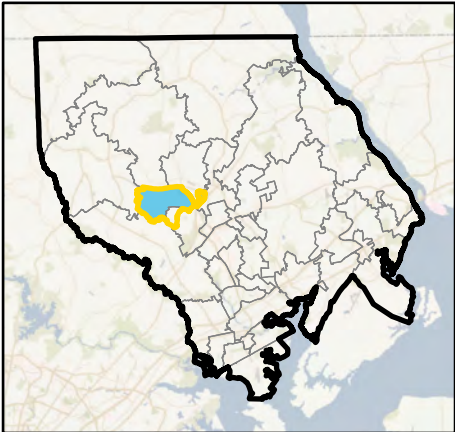
-  Elementary School
-  District Boundary
-  Advisory Team Elementary School Boundary
-  Potential Change Area
-  Forest Lakes ES Current Configuration
-  Forest Lakes ES Current Attendance Area
-  Elementary School Attendance Area Boundary Outline
-  Elementary School Attendance Area Current

Potential Change Areas:

CW-2: From Red Pump ES to Forest Lake ES










**Overview Map**



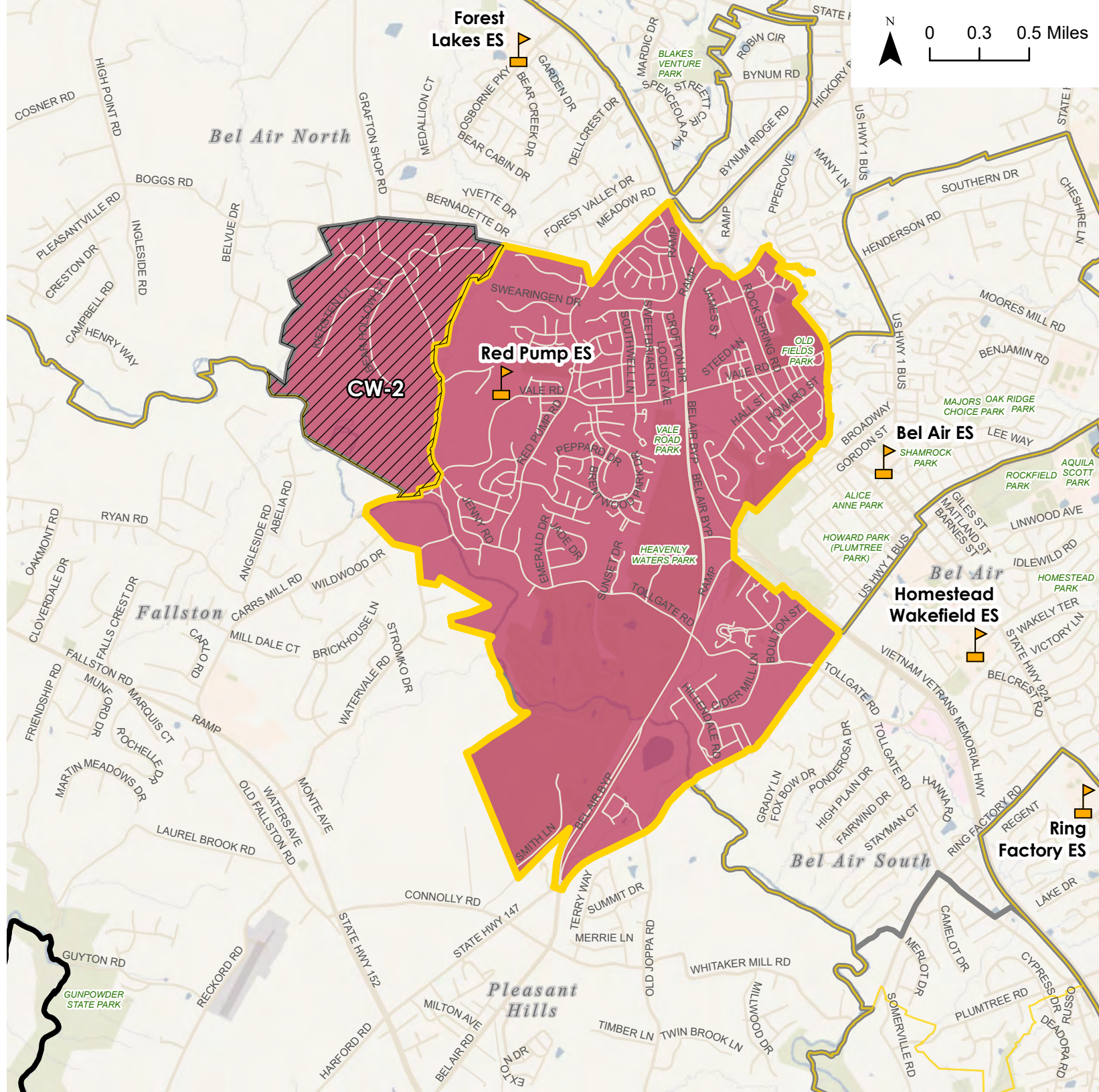
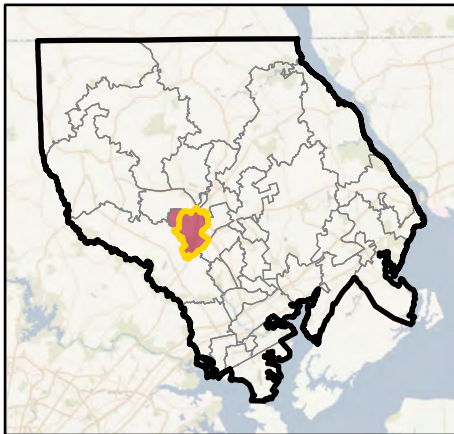


**Elementary School Boundary Recommendation - Red Pump ES**

-  Elementary School
  -  District Boundary
  -  Advisory Team Elementary School Boundary
  -  Boundary Recommendation for Red Pump ES
  -  Potential Change Area
- Current Configuration - Elementary Schools**
-  Red Pump ES Current Attendance Area
  -  Elementary School Attendance Area Boundary Outline - Current Attendance Area








Potential Change Areas:  
 CW-2: From Red Pump ES to Forest Lake ES

**Overview Map**



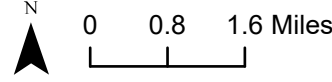
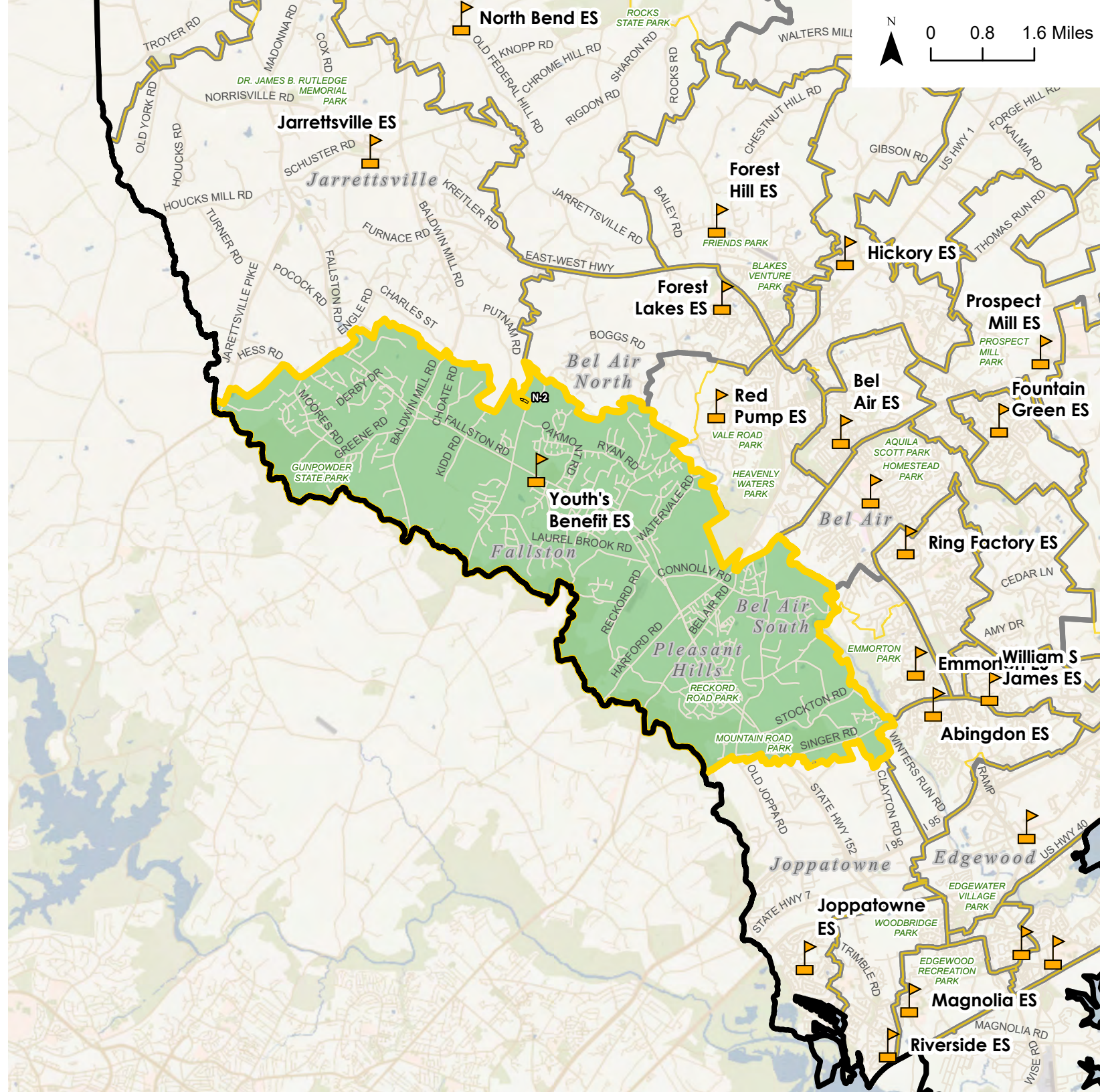
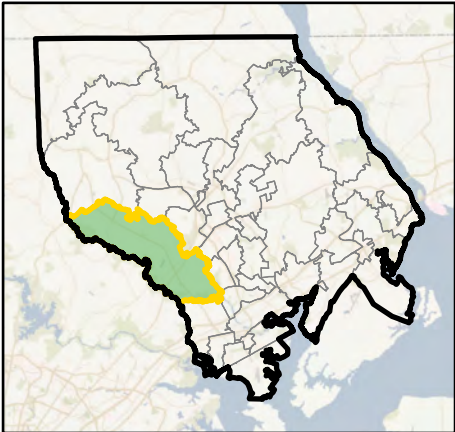


**Elementary School Boundary Recommendation - Youth's Benefit ES**

-  Elementary School
-  District Boundary
-  Advisory Team Elementary School Boundary
-  Boundary Recommendation for Youth's Benefit ES
-  Potential Change Area
- Current Configuration - Elementary Schools**
-  Youth's Benefit ES Current Attendance Area
-  Elementary School Attendance Area Boundary Outline - Current Attendance Area

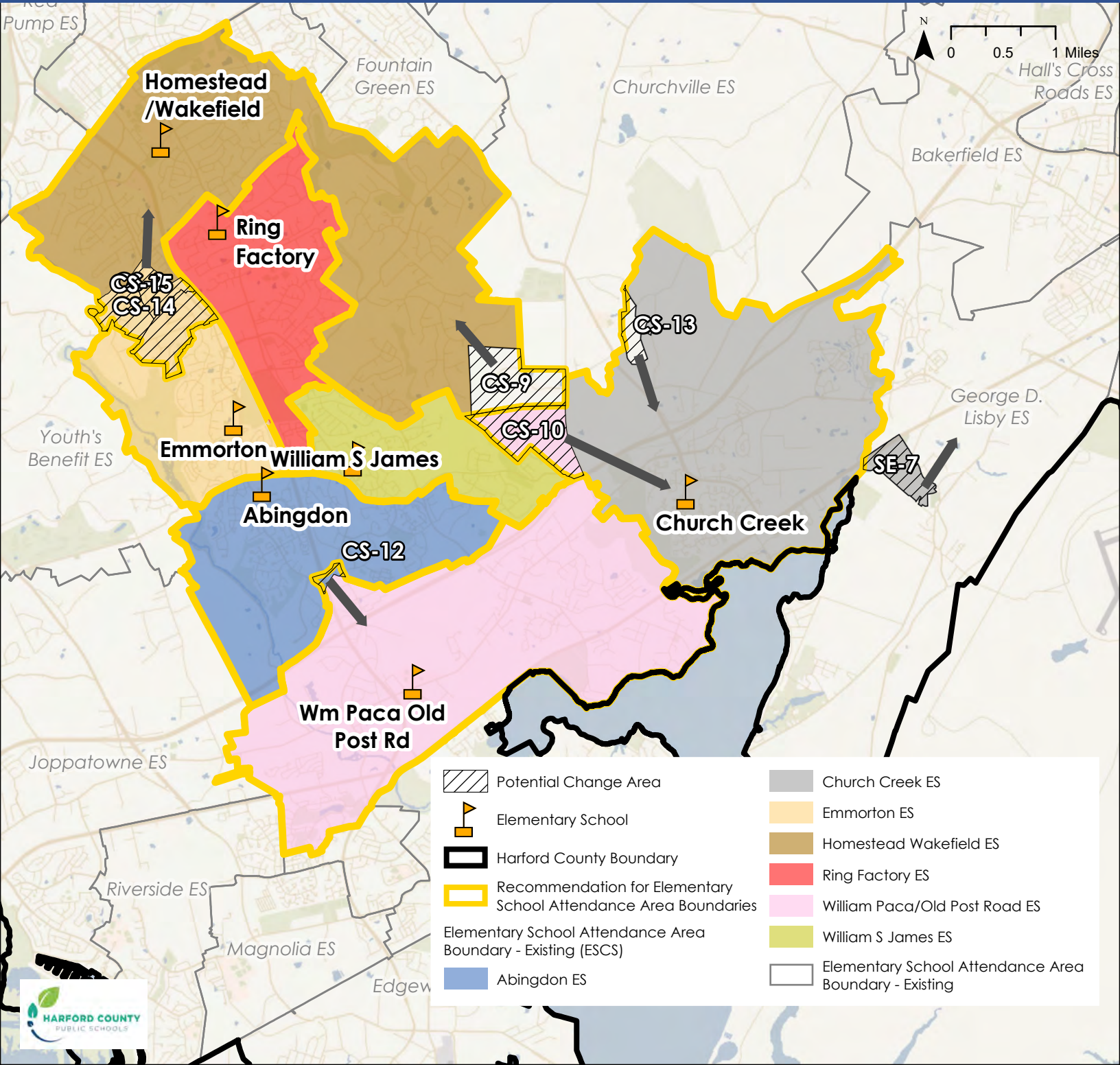
Potential Change Areas:  
N-2: From Youth's Benefit ES to Jarrettsville ES














**Overview Map**









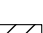


# District Overview - Recommendation Elementary School Center South (ESCS)



 Potential Change Area	 Church Creek ES
 Elementary School	 Emmorton ES
 Harford County Boundary	 Homestead Wakefield ES
 Recommendation for Elementary School Attendance Area Boundaries	 Ring Factory ES
 Elementary School Attendance Area Boundary - Existing (ESCS)	 William Paca/Old Post Road ES
 Abingdon ES	 William S James ES
	 Elementary School Attendance Area Boundary - Existing

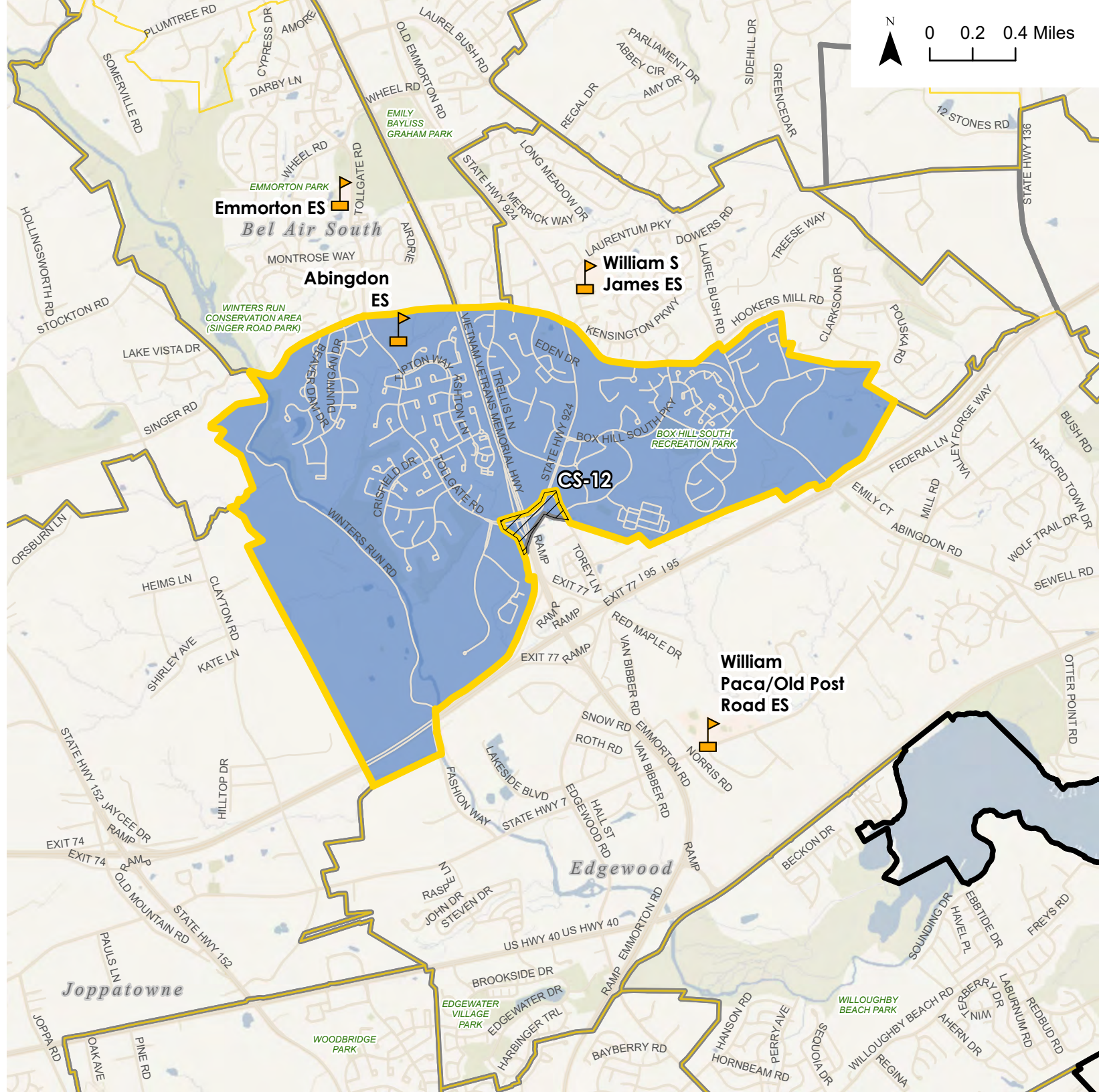


# Elementary School Boundary Recommendation - Abingdon ES

-  Elementary School
-  District Boundary
-  Advisory Team Elementary School Boundary
-  Boundary Recommendation for Abingdon ES
-  Potential Change Area
- Current Configuration - Elementary Schools**
-  Abingdon ES Current Attendance Area
-  Elementary School Attendance Area Boundary Outline - Current Attendance Area





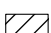



Potential Change Areas:  
CS-12: From Abingdon ES to William Paca/Old Post Road ES

## Overview Map



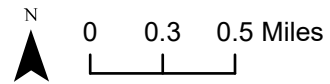
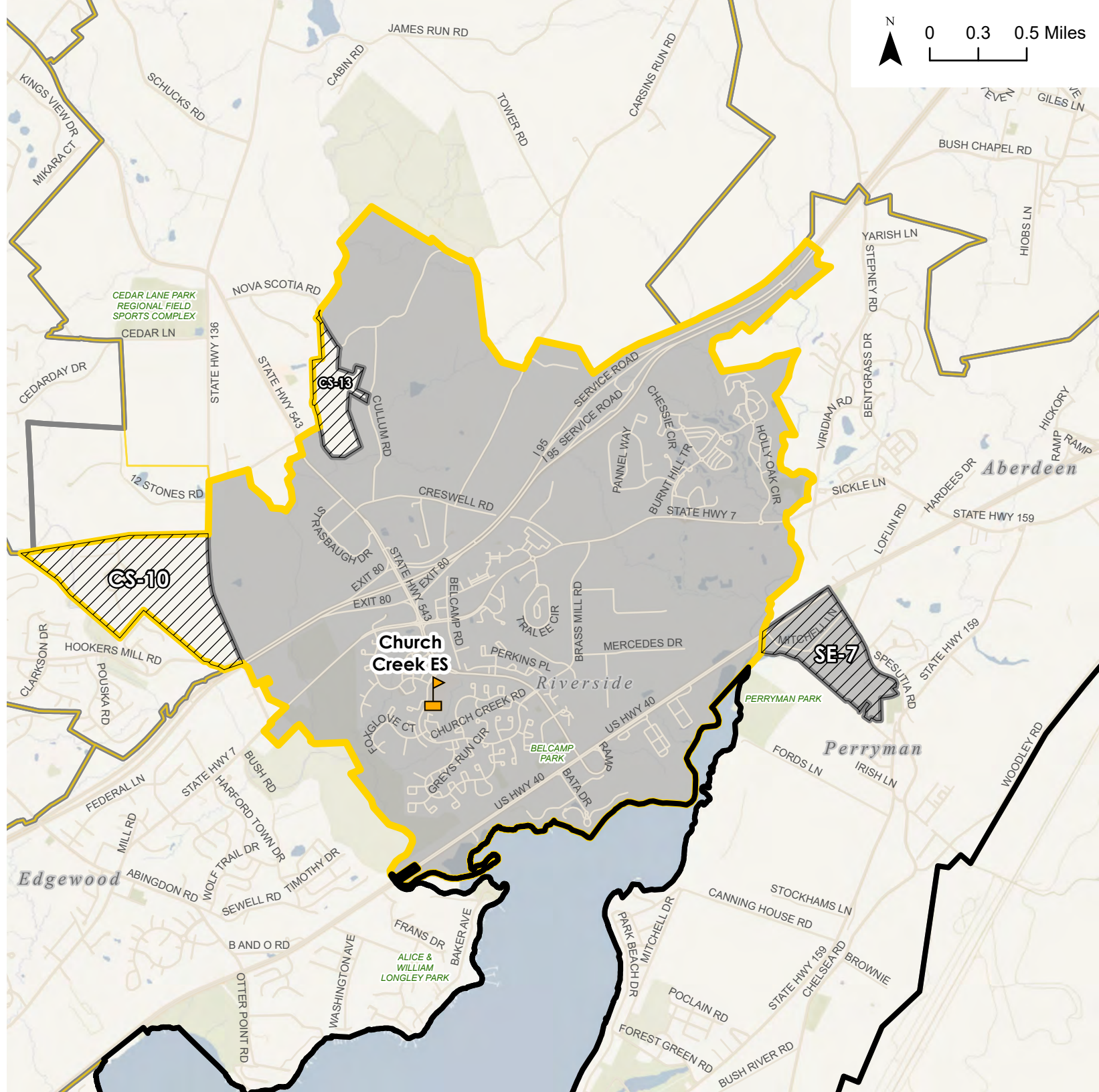
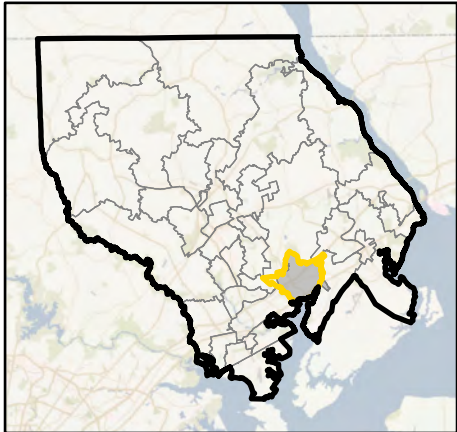


**Elementary School  
Boundary  
Recommendation -  
Church Creek ES**

-  Elementary School
-  District Boundary
-  Advisory Team  
Elementary School  
Boundary
-  Recommendation for  
Church Creek ES
-  Potential Change  
Area
- Current Configuration -  
Elementary Schools**
-  Church Creek ES  
Current Attendance  
Area
-  Elementary School  
Attendance Area
-  Boundary Outline -  
Current Attendance  
Area






Potential Change Areas:  
SE-7: From Church Creek ES to George D. Lisby ES  
CS-13: From Churchville ES to Church Creek ES  
CS-10: From William Paca/Old Post Road ES to Church Creek ES

**Overview Map**







# Elementary School Boundary Recommendation - Emmorton ES

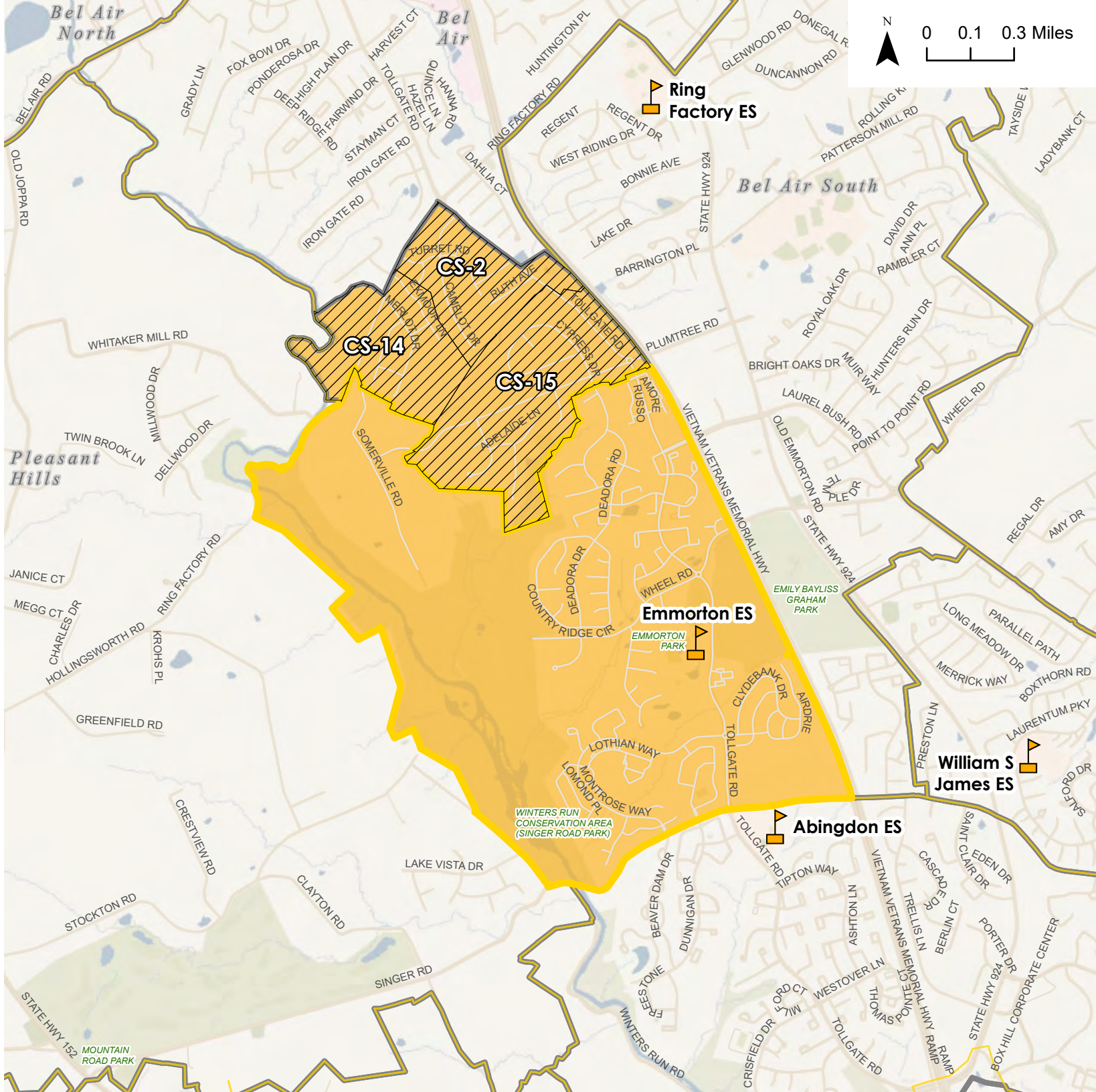
-  Elementary School
-  District Boundary
-  Advisory Team Elementary School Boundary
-  Boundary Recommendation for Emmorton ES
-  Potential Change Area

## Current Configuration - Elementary Schools

-  Emmorton ES Current Attendance Area
-  Elementary School Attendance Area Boundary Outline - Current Attendance Area

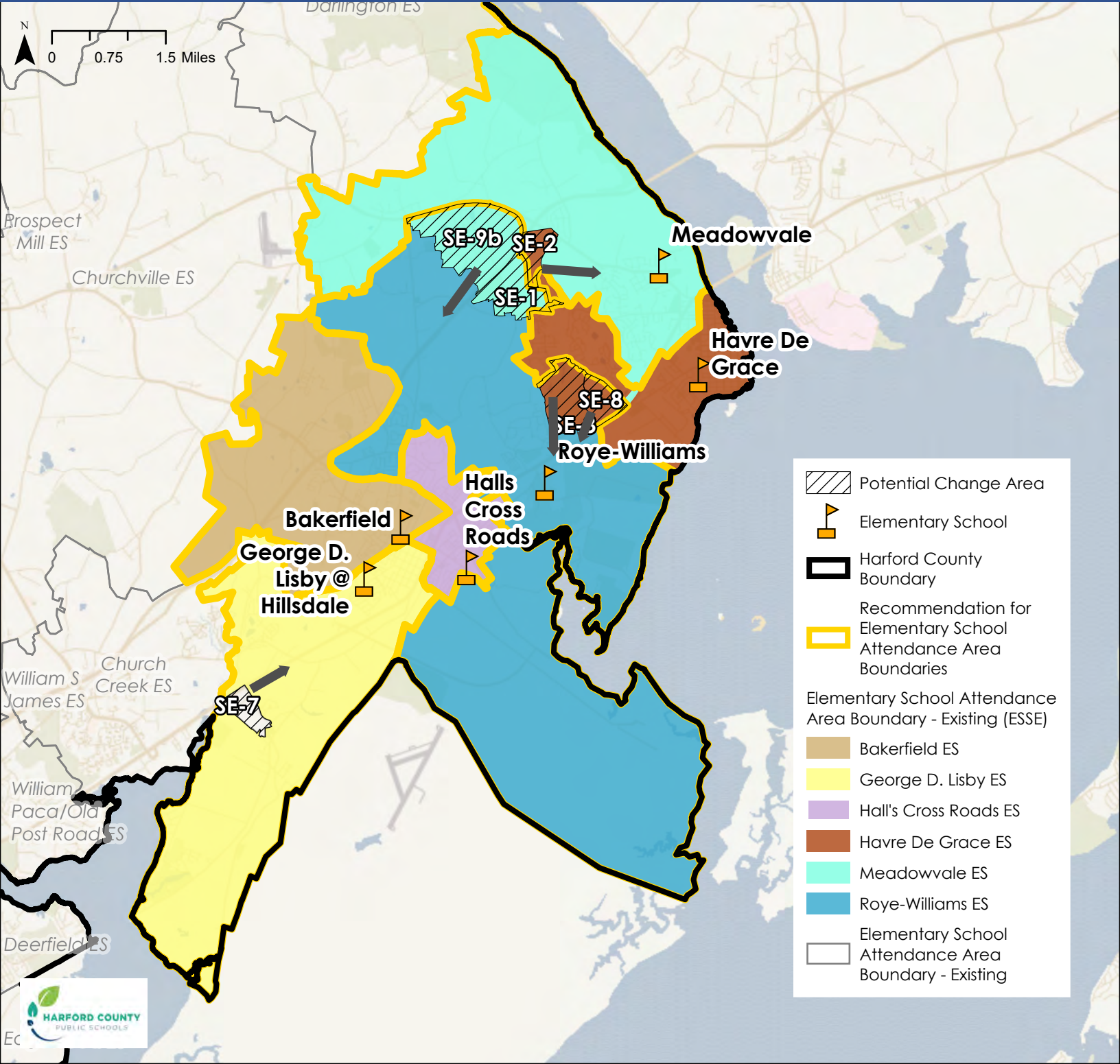
Potential Change Areas:  
 CS-2: From Emmorton ES to Homestead Wakefield ES  
 CS-15: From Emmorton ES to Homestead Wakefield ES  
 CS-14: From Emmorton ES to Homestead Wakefield ES

## Overview Map







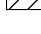
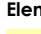



# District Overview - Recommendation Elementary School South East (ESSE)





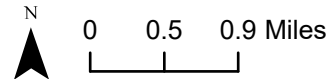
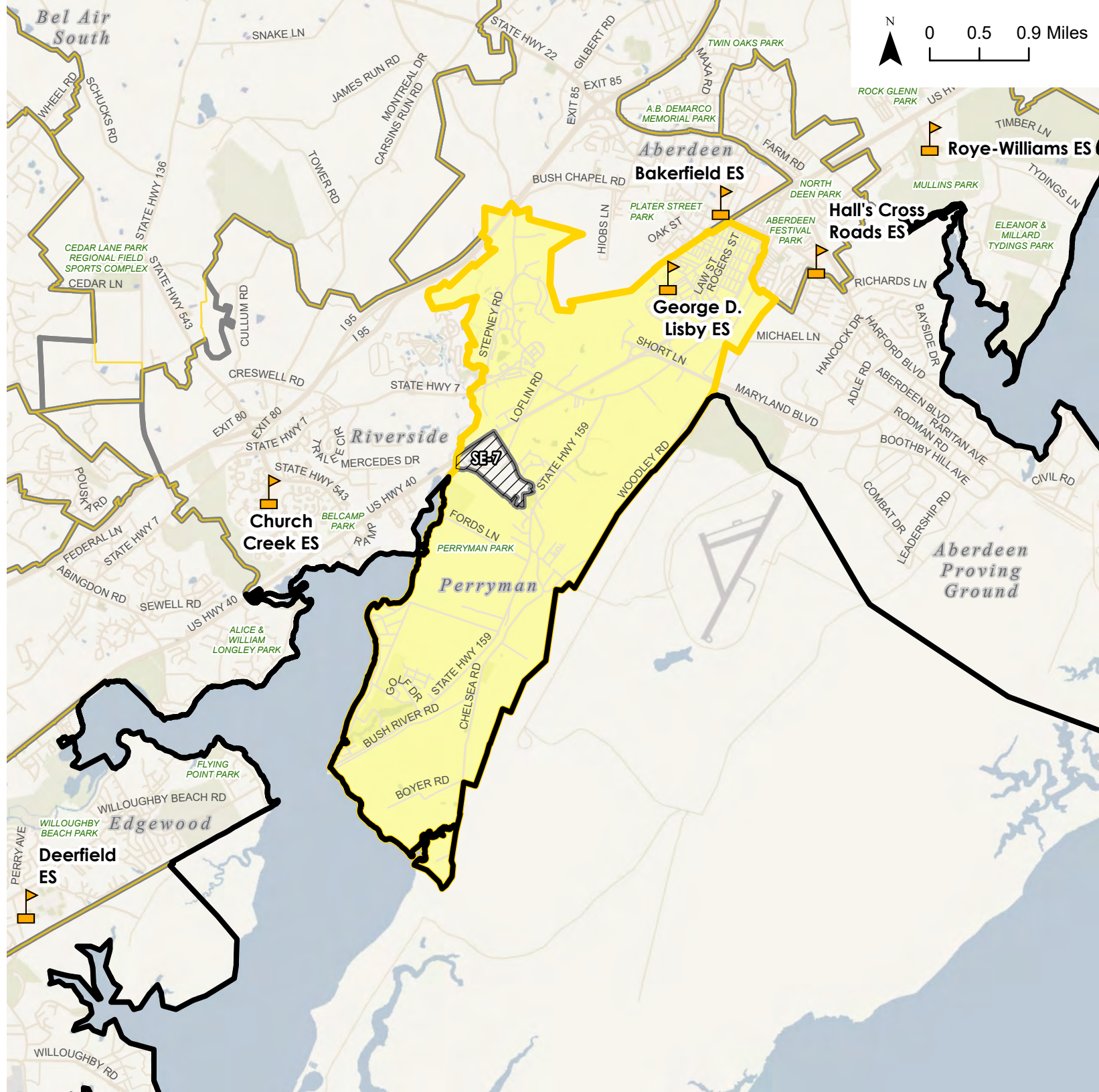
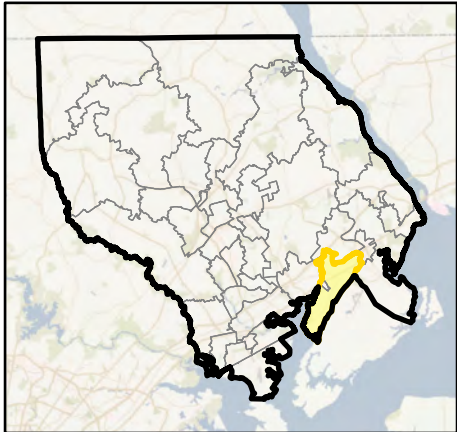
**Elementary School Boundary Recommendation - George D. Lisby ES**

-  Elementary School
-  District Boundary
-  Advisory Team Elementary School Boundary Recommendation for George D. Lisby ES
-  Potential Change Area
- Current Configuration - Elementary Schools**
-  George D. Lisby ES
-  Elementary School Attendance Area
-  Boundary Outline - Current Attendance Area

Potential Change Areas:






SE-7: From Church Creek ES to George D. Lisby ES

**Overview Map**









**Elementary School Boundary Recommendation - Havre De Grace ES**

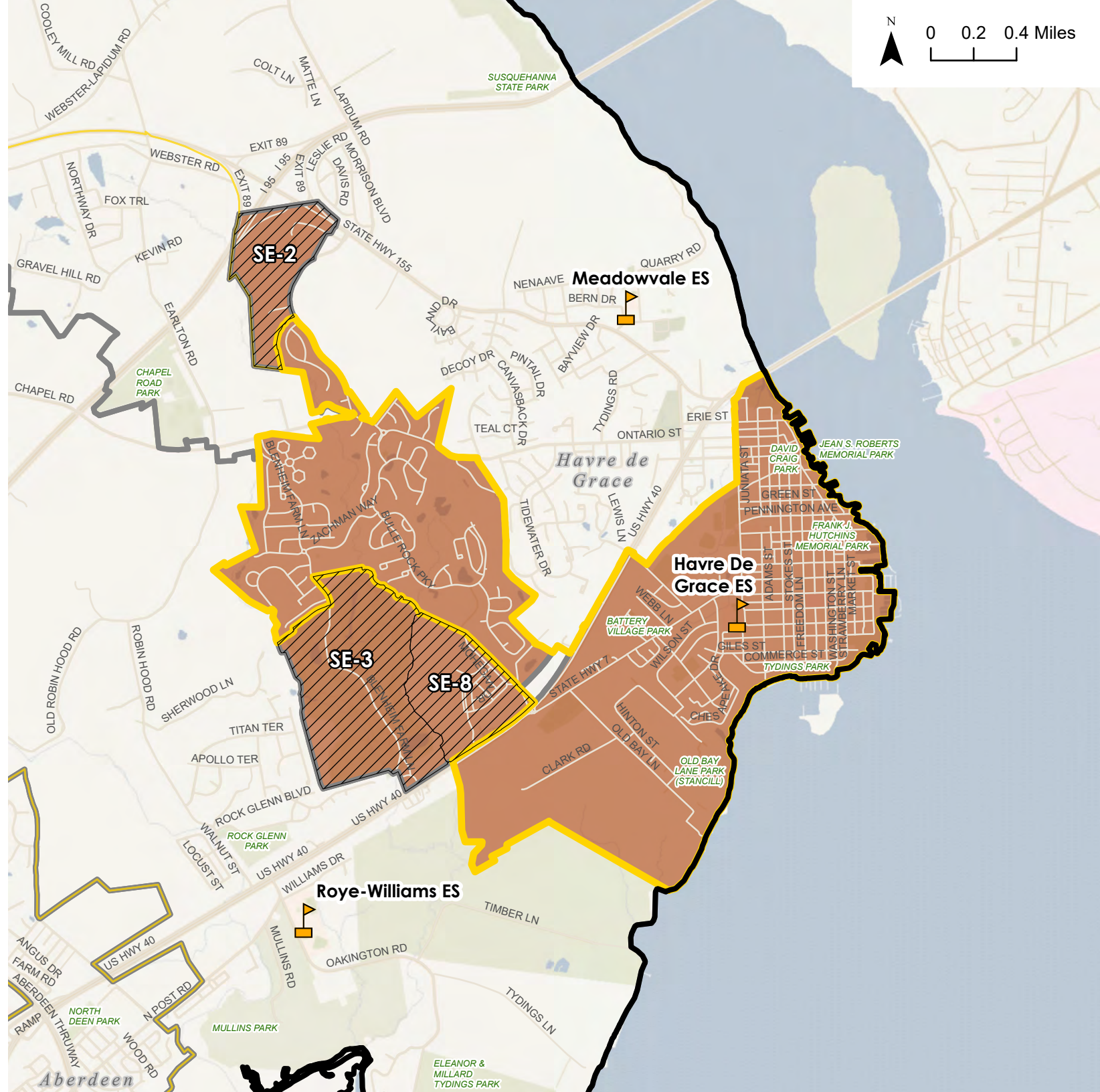
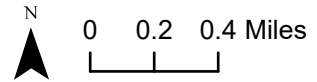
-  Elementary School
-  District Boundary
-  Advisory Team Elementary School Boundary
-  Recommendation for Havre De Grace ES
-  Potential Change Area

**Current Configuration - Elementary Schools**

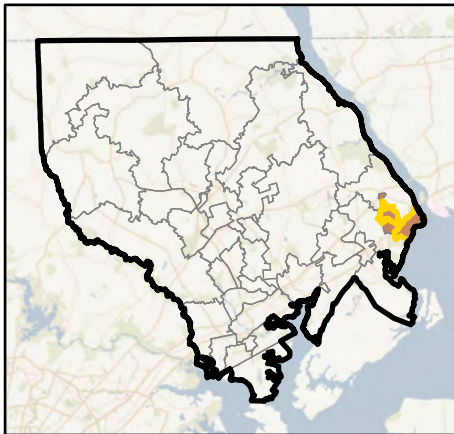
-  Havre De Grace ES
-  Current Attendance Area
-  Elementary School Attendance Area
-  Boundary Outline - Current Attendance Area

**Potential Change Areas:**

- SE-2: From Havre De Grace ES to Meadowvale ES
- SE-3: From Havre De Grace ES to Roye-Williams ES
- SE-8: From Havre De Grace ES to Roye-Williams ES






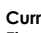



**Overview Map**



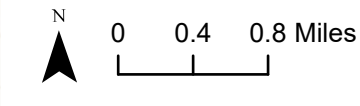
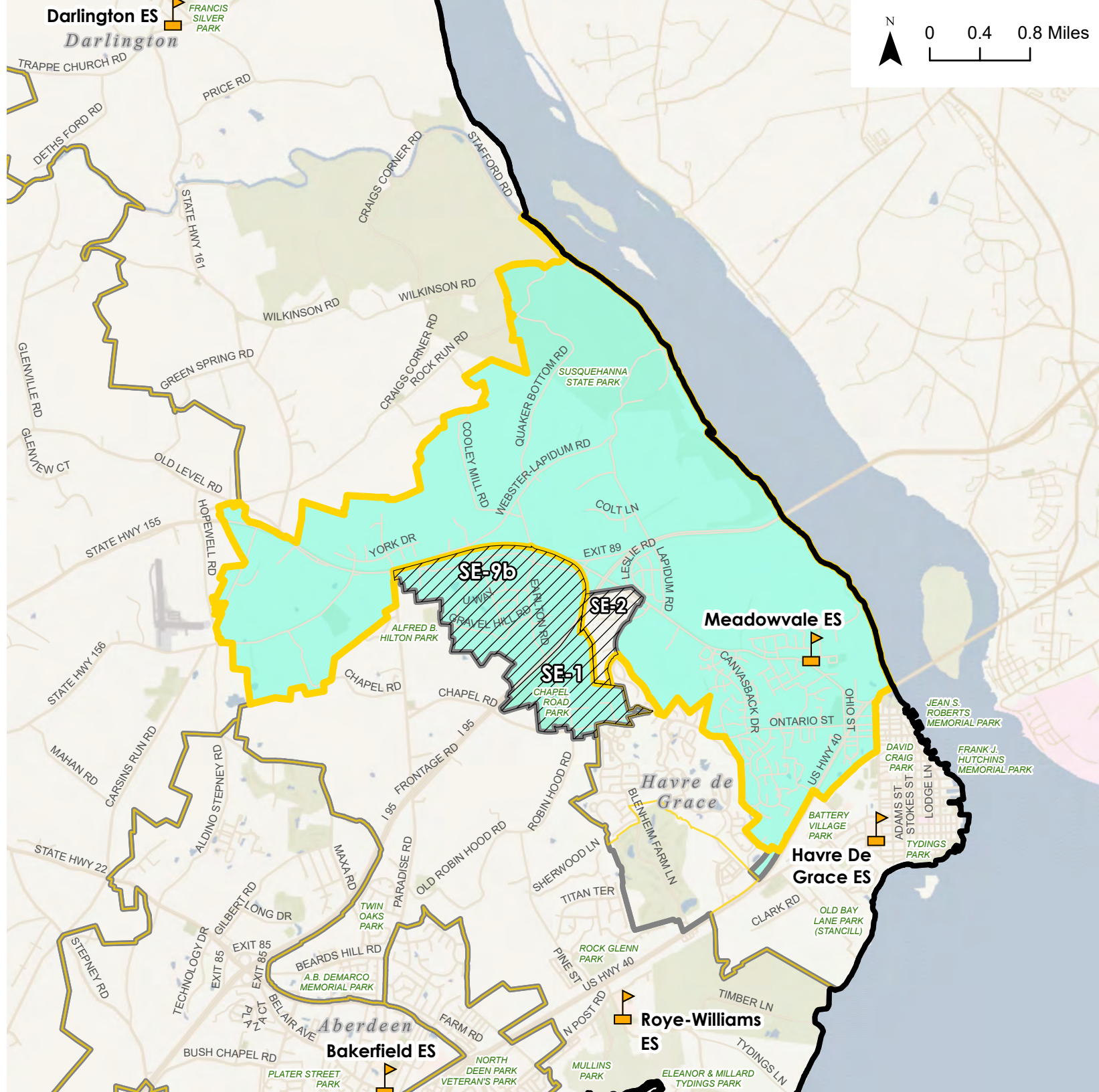
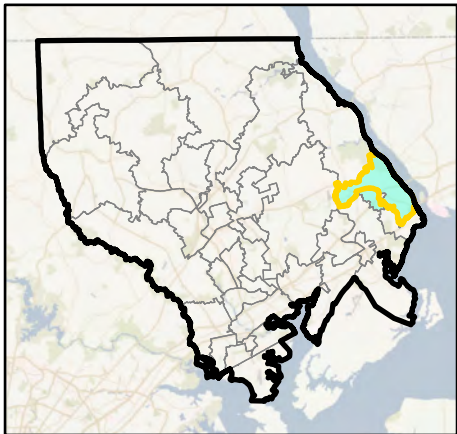


**Elementary School Boundary Recommendation - Meadowvale ES**

-  Elementary School
-  District Boundary
-  Advisory Team Elementary School Boundary
-  Potential Change Area
-  **Current Configuration - Elementary Schools**
-  Meadowvale ES Current Attendance Area
-  Elementary School Attendance Area Boundary Outline - Current Attendance Area





Potential Change Areas:  
 SE-1: From Meadowvale ES to Roye-Williams ES  
 SE-9: From Meadowvale ES to Roye-Williams ES  
 SE-2: From Havre De Grace ES to Meadowvale ES

**Overview Map**








**Elementary School  
Boundary  
Recommendation -  
Roye-Williams ES**

-  Elementary School
-  District Boundary
-  Advisory Team Elementary School Boundary
-  Potential Change Area

**Current Configuration -  
Elementary Schools**

-  Roye-Williams ES
-  Current Attendance Area
-  Elementary School Attendance Area Boundary Outline - Current Attendance Area

**Potential Change Areas:**

- SE-3: From Havre De Grace ES to Roye-Williams ES
- SE-1: From Meadowvale ES to Roye-Williams ES
- SE-8: From Havre De Grace ES to Roye-Williams ES
- SE-9: From Meadowvale ES to Roye-Williams ES

**Overview Map**

