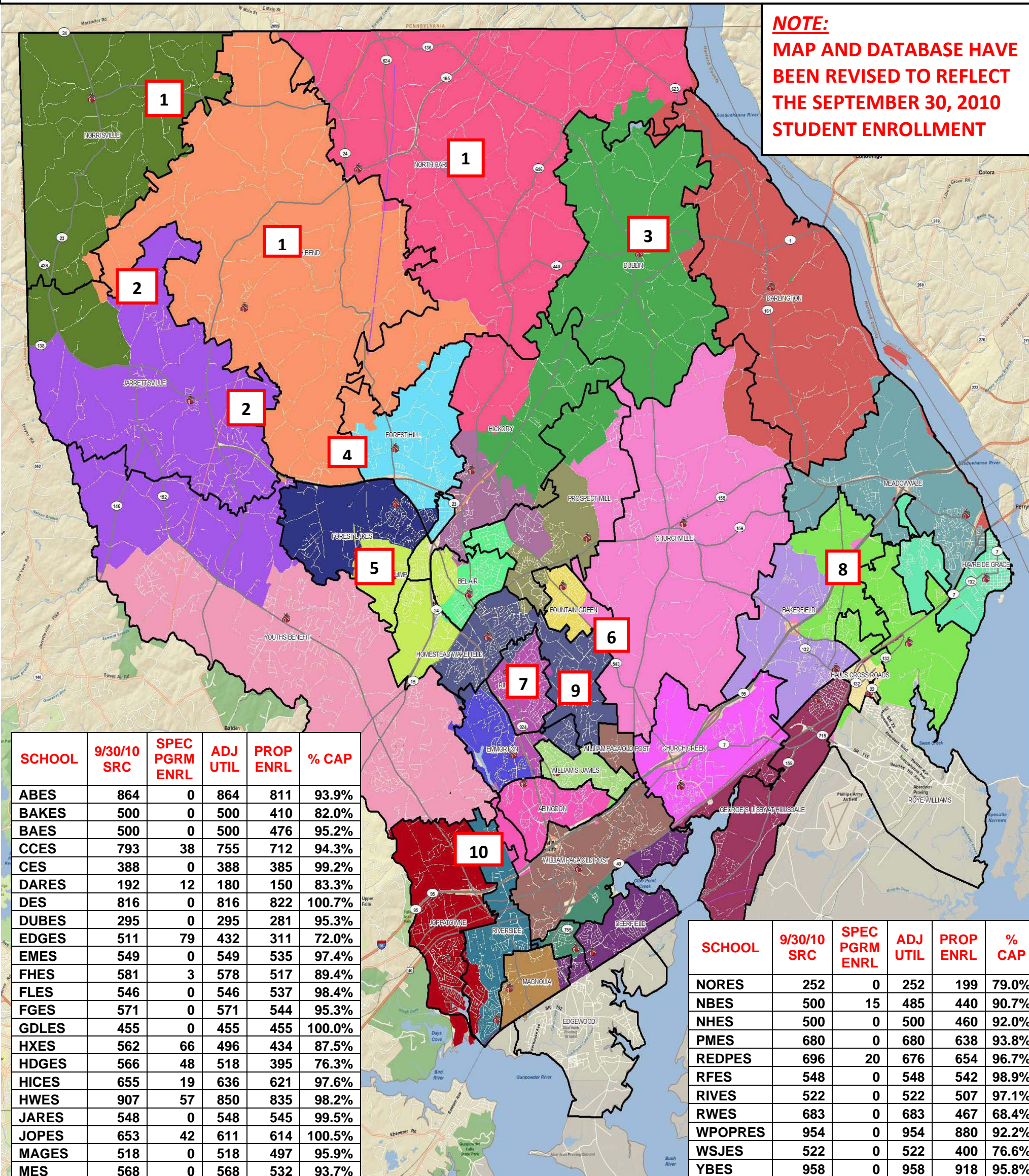


REVISION #1 - JANUARY 14, 2011- STAC

EXISTING AND PROPOSED ATTENDANCE AREA BOUNDARIES

NOTE:
MAP AND DATABASE HAVE BEEN REVISED TO REFLECT THE SEPTEMBER 30, 2010 STUDENT ENROLLMENT



SCHOOL	9/30/10 SRC	SPEC PGRM ENRL	ADJ UTIL	PROP ENRL	% CAP
ABES	864	0	864	811	93.9%
BAKES	500	0	500	410	82.0%
BAES	500	0	500	476	95.2%
CCES	793	38	755	712	94.3%
CES	388	0	388	385	99.2%
DARES	192	12	180	150	83.3%
DES	816	0	816	822	100.7%
DUBES	295	0	295	281	95.3%
EDGES	511	79	432	311	72.0%
EMES	549	0	549	535	97.4%
FHES	581	3	578	517	89.4%
FLES	546	0	546	537	98.4%
FGES	571	0	571	544	95.3%
GDLES	455	0	455	455	100.0%
HXES	562	66	496	434	87.5%
HDGES	566	48	518	395	76.3%
HICES	655	19	636	621	97.6%
HWES	907	57	850	835	98.2%
JARES	548	0	548	545	99.5%
JOPES	653	42	611	614	100.5%
MAGES	518	0	518	497	95.9%
MES	568	0	568	532	93.7%

SCHOOL	9/30/10 SRC	SPEC PGRM ENRL	ADJ UTIL	PROP ENRL	% CAP
NORES	252	0	252	199	79.0%
NBES	500	15	485	440	90.7%
NHES	500	0	500	460	92.0%
PMES	680	0	680	638	93.8%
REDPES	696	20	676	654	96.7%
RFES	548	0	548	542	98.9%
RIVES	522	0	522	507	97.1%
RWES	683	0	683	467	68.4%
WPOPRES	954	0	954	880	92.2%
WSJES	522	0	522	400	76.6%
YBES	958	0	958	918	95.8%

MAP LEGEND

1. BALANCED ENROLLMENT AMONGST NORRISVILLE, NORTH BEND, AND NORTH HARFORD ELEMENTARY SCHOOLS. RETURNED MUCH OF THE NORTHWEST PORTION OF NORTH BEND ELEMENTARY SCHOOL TO THE CURRENT ATTENDANCE AREA.
2. "STOP THE SWAP" – SWAP OF NORTH BEND AND JARRETTSVILLE ELEMENTARY STUDENTS.
3. RETURNED A MAJORITY OF THE DUBLIN/DARLINGTON STUDENTS BACK TO THE CURRENT ATTENDANCE AREA.
4. RETURNED A NUMBER OF STUDENTS BACK TO FOREST HILL ELEMENTARY FROM NORTH BEND REPRESENTING SOME NEIGHBORHOODS DIRECTLY ACROSS AND WEST OF RT. 24.
5. MADE CHANGES WITH RESPECT TO FOREST HILL, FOREST LAKES, HICKORY, HOMESTEAD/WAKEFIELD, PROSPECT MILL, RED PUMP ELEMENTARY SCHOOLS.
6. THE STONE RIDGE DEVELOPMENT WILL REMAIN IN THE FOUNTAIN GREEN ELEMENTARY SCHOOL ATTENDANCE AREA.
7. MAJORITY OF THE GLENWOOD SUBDIVISION DIRECTLY ACROSS THE STREET FROM RING FACTORY ELEMENTARY SCHOOL WILL BE RETURNED TO RING FACTORY WITH THE EXCEPTION OF A SMALL PORTION NAMED COLONIAL ACRES.
8. MADE ADJUSTMENTS TO THE NORTHEASTERN PORTION OF BAKERFIELD AND THE NORTHEASTERN PORTION OF HALL'S CROSS ROADS ELEMENTARY SCHOOLS TO ROYE WILLIAMS ELEMENTARY.
9. RETAINED SUBDIVISION KNOWN AS VINE HILL ESTATES IN RING FACTORY ELEMENTARY SCHOOL.
10. MOVED SMALL SECTION IN NORTH EAST PORTION OF RIVERSIDE TO ABINGDON.