



ABINGDON ELEMENTARY

January 2009

399 Singer Road, Abingdon, MD 21009 • 410-638-3910 • 410-638-3914 fax

AT A GLANCE

FACILITY OPENED: 1992

ADDITIONS/RENOVATIONS: 2001

SCHOOL CAPACITY: 821

TOTAL ENROLLMENT: 795

CLASSROOM TEACHERS: 58

ADMINISTRATION

PRINCIPAL:

Kathleen A. Burr

ASSISTANT PRINCIPAL:

Kristen M. Mang

INSTRUCTIONAL FACILITATOR:

Peter F. Carpenter, II



WELCOME

Abingdon Elementary School is entering its second decade of being a vital part of the community it serves. Thanks to the completion of a new addition to the school completed in fall of 2002, the school is able to fully accommodate all the classrooms and programs, which serve a student population of approximately 830 students.

School programs start with a state validated Pre-kindergarten program and continue to fifth grade. Through the support of the Harford County Public School System, additional services are offered to eligible students during the school day in enrichment, remedial reading, counseling, and special education. Thanks in part to the efforts of the Abingdon PTA, additional enrichment classes are offered to students beyond the school day at various times during the school year.

The experienced and talented faculty of Abingdon Elementary works hard each and every day to provide the children with a quality educational program in the individual classrooms. The School Improvement Team and many school-based committees work to make sure that school-wide programs and initiatives target the specific needs of our student population while focusing our efforts on targeted academic areas, such as reading and math. These efforts by the staff are supported by hundreds of volunteers and an enthusiastic, well-run PTA organization. Parents, teachers, and staff work well together and are truly committed to helping all children experience success academically, behaviorally, and socially. It is no wonder that Abingdon Elementary performs well on various state and county assessments. We are also very proud of our warm and welcoming atmosphere where adults and children truly care about each other and have fun while learning. By working together, members of the Abingdon Elementary School community are making our school slogan of "soaring to excellence" a reality each and every day.

Kathleen A. Burr
Principal



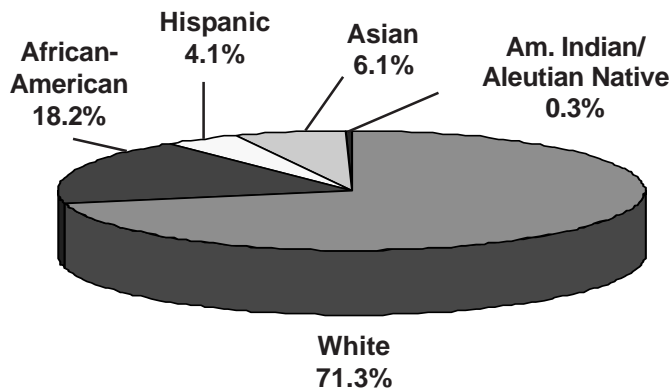
Student Population Characteristics

Student Enrollment	2005	2006	2007	2008	2009
Grade					
Pre-School	NA	NA	NA	0	0
Pre-K	40	40	37	38	40
Kindergarten	131	132	125	150	122
1	170	140	123	125	152
2	123	151	116	116	122
3	139	114	130	115	115
4	140	128	94	130	113
5	98	117	126	95	131

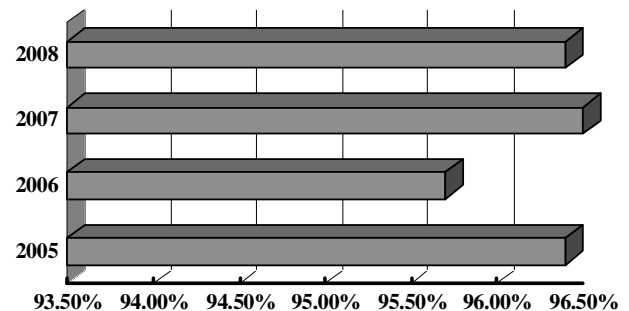
Students Absent				
< 5 days	39.9%	30.1%	46.2%	46.2%
> 20 days	1.8%	3.9%	2.6%	2.6%
Student Mobility				
Entrants	6.5%	5.5%	5.6%	9.6%
Withdrawals	5.7%	8.4%	8.1%	7.7%

Students Receiving Special Services	2006 %	2007 %	2008 %
Free/Reduced Price Meals	15.2	15.6	19.6
Limited English Proficient	1.1	1.0	1.0
Special Education	15.6	14.4	13.8

Student Membership by Ethnicity (2008)

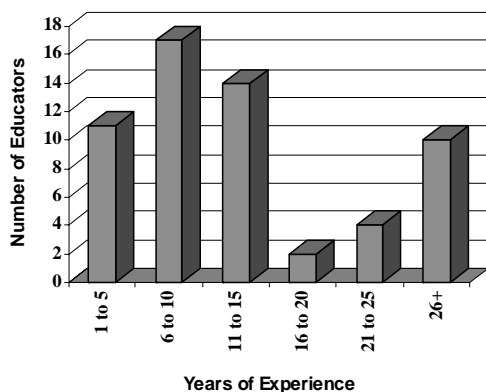


Student Attendance

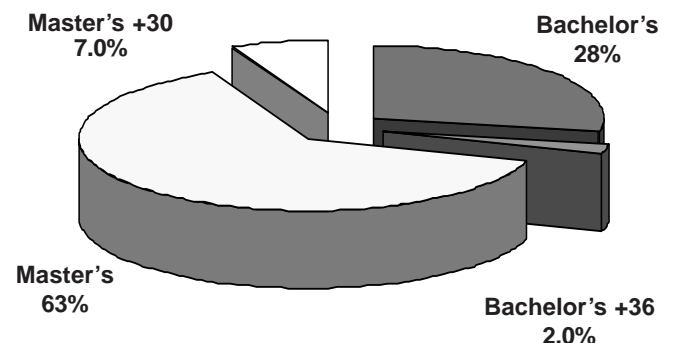


School Staff Characteristics

Professional Staff Experience

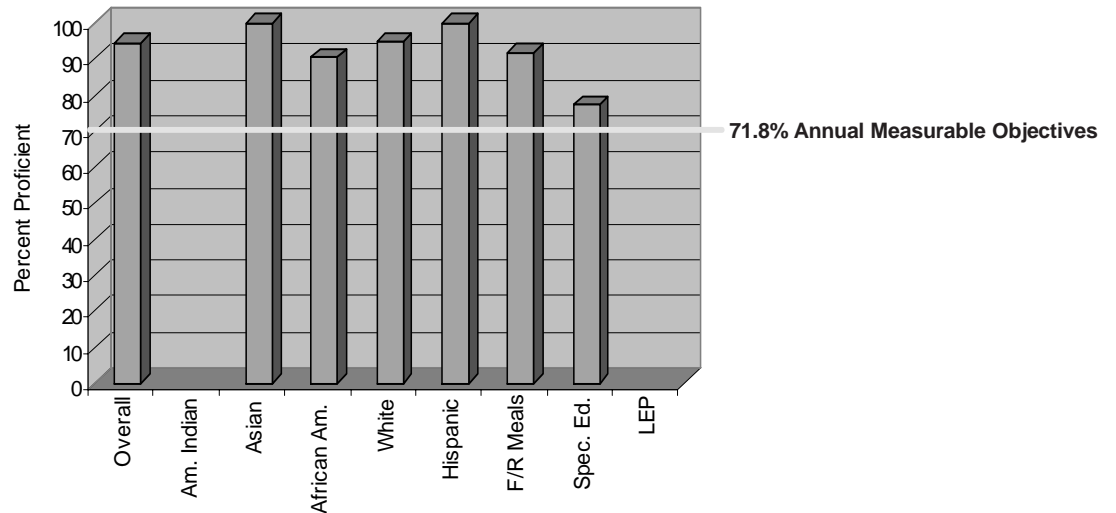


Education of Professional Staff

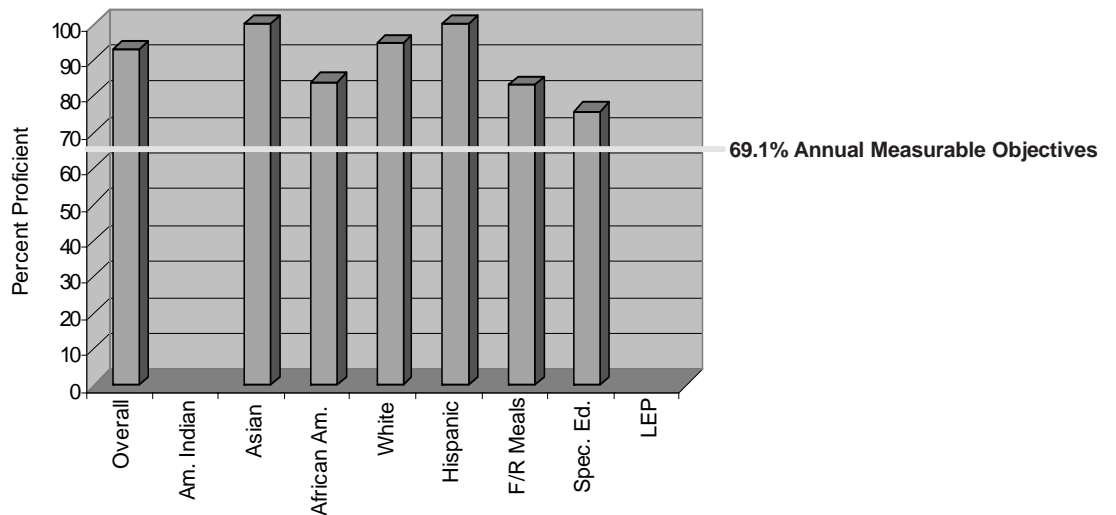


MSA Results: 2008

Reading: Grades 3, 4, and 5 Weighted Average



Mathematics: Grades 3, 4, and 5 Weighted Average



The graphs above show the percent of eligible third, fourth, and fifth grade students who performed at the proficient level on the Maryland State Assessment Reading and Mathematics tests. If a category is empty, there were too few students to monitor. For more information, go to www.msde.state.md.us, and click on 2008 Performance Report.