



# HICKORY ELEMENTARY

January 2009

2100 Conowingo Road, Bel Air, MD 21014 • 410-638-4170 • 410-638-4172 fax

## AT A GLANCE

**FACILITY OPENED:** 1950

**ADDITIONS/RENOVATIONS:** 1997

**SCHOOL CAPACITY:** 622

**TOTAL ENROLLMENT:** 702

**CLASSROOM TEACHERS:** 64

## ADMINISTRATION

### PRINCIPAL:

Jeanette Jennings

### ASSISTANT PRINCIPAL:

Robin D. Smith

### INSTRUCTIONAL FACILITATOR:

Marc D. Hamilton



## WELCOME

Life-long learning is the resounding message exemplified at Hickory Elementary School. Students are eager to learn. Teachers and support staff are actively engaged in Professional Learning Communities (PLC) which allows us to stay abreast of research-based instructional strategies. Continuous assessment of students' strengths and areas in need of improvement leads to effective instructional practices. With a focus on differentiation, we have been able to provide effective and appropriate instruction for each student at his/her developmental level. Students greatly benefit from this collaborative and adaptive approach to teaching and learning.

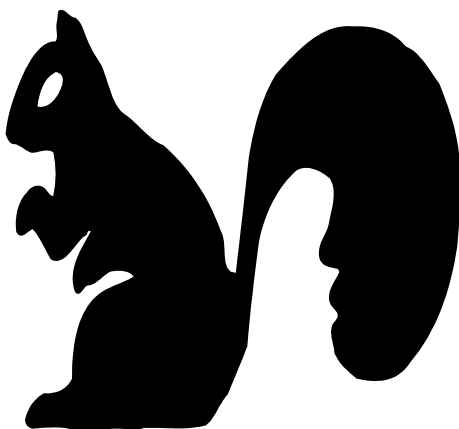
Our block schedule provides large periods of predictable, uninterrupted instructional time, making it possible for students' needs to be addressed through regrouping, intervention or enrichment.

Hickory Elementary School enjoys a strong and well-organized PTA and volunteer group. Fundraising, student recognition, special events, and tutoring are just a few of the activities of these groups.

Motivated students, a dedicated staff, a great deal of family involvement, and high expectations from all stakeholders contributed to Hickory Elementary School being recognized as one of Maryland's Blue Ribbon Schools in 2007.

Like our school mascot, the industrious squirrel, our students and staff are dedicated to our mission ... "Every child, every day, no squirrel left behind."

*Jeanette Jennings*  
Principal



# Student Population Characteristics

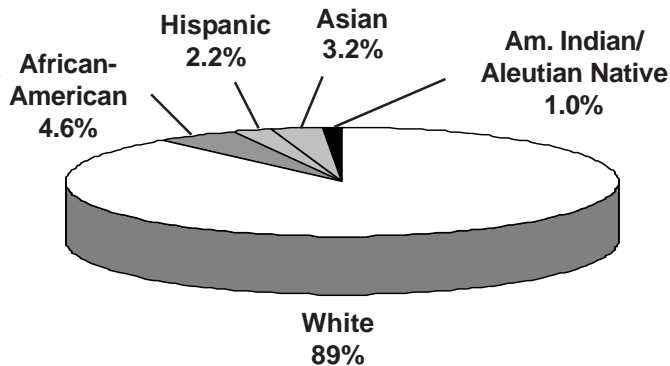
Student Enrollment	2005	2006	2007	2008	2009
<b>Grade</b>					
Pre-School	0	4	5	7	6
Pre-K	0	8	6	4	6
Kindergarten	98	114	82	120	109
1	116	111	122	89	120
2	101	118	117	118	92
3	104	99	116	124	119
4	140	105	107	127	125
5	108	137	109	104	125

Students Absent				
< 5 days	31.3%	28.6%	43.8%	43.8%
> 20 days	4.9%	6.4%	4.5%	4.5%
Student Mobility				
Entrants	7.8%	5.0%	6.4%	5.2%
Withdrawals	7.4%	3.1%	3.9%	4.3%

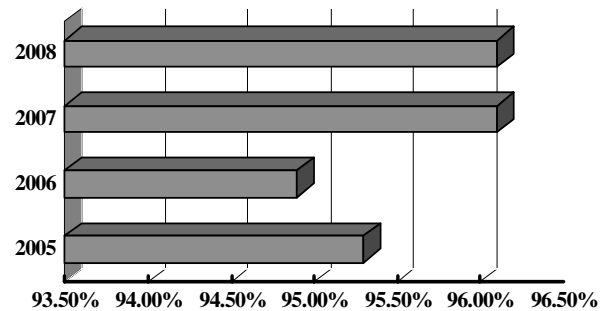
Students Receiving Special Services	2006 %	2007 %	2008 %
Free/Reduced Price Meals	9.7	11.4	10.4
Limited English Proficient	1.1	1.3	1.1
Special Education	11	9.0	8.1

\*\*Reflects students enrolled in "ungraded special education"

## Student Membership by Ethnicity (2008)

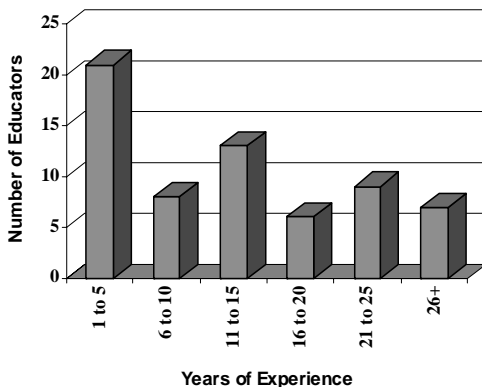


## Student Attendance

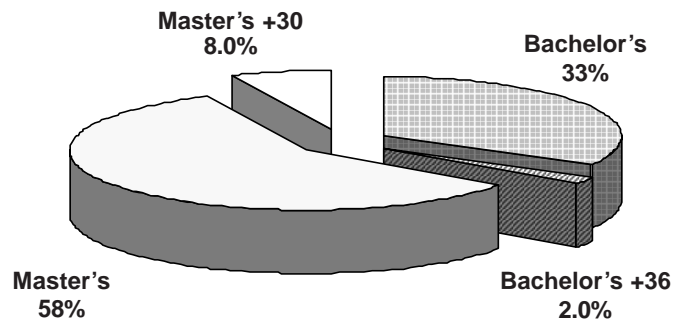


# School Staff Characteristics

## Professional Staff Experience

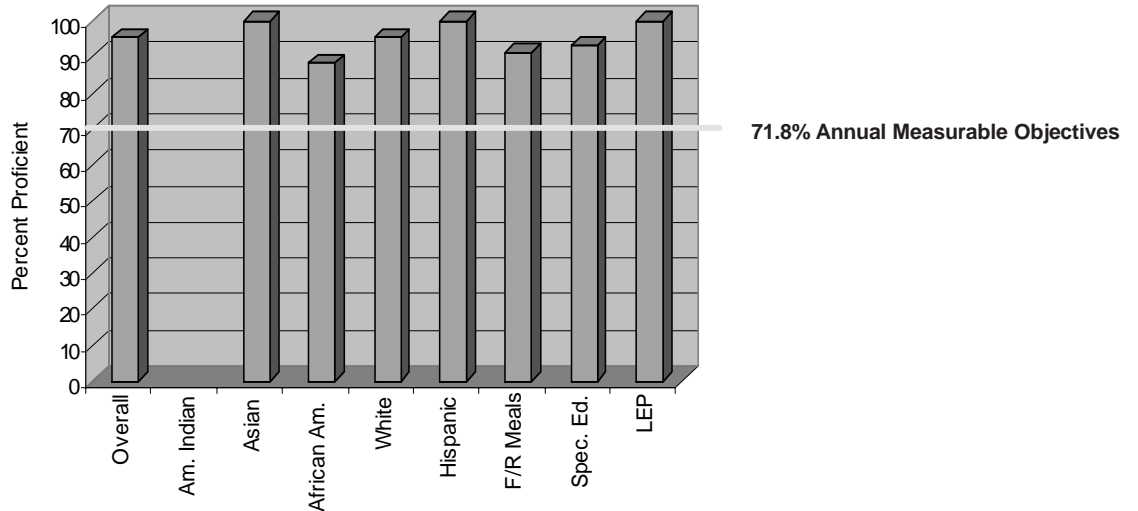


## Education of Professional Staff

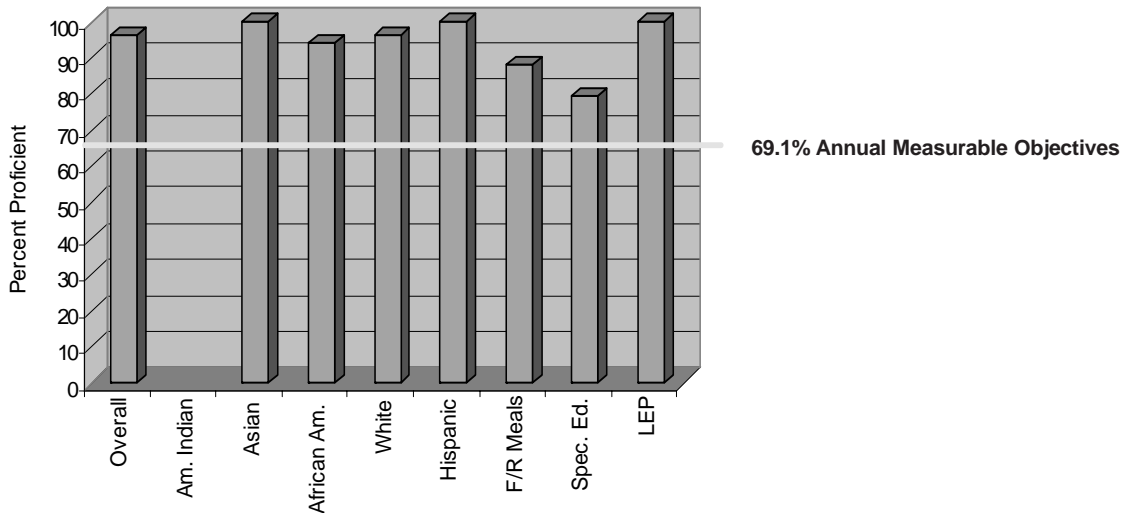


## MSA Results: 2008

### Reading: Grades 3, 4, and 5 Weighted Average



### Mathematics: Grades 3, 4, and 5 Weighted Average



*The graphs above show the percent of eligible third, fourth, and fifth grade students who performed at the proficient level on the Maryland State Assessment Reading and Mathematics tests. If a category is empty, there were too few students to monitor. For more information, go to [www.msde.state.md.us](http://www.msde.state.md.us), and click on 2008 Performance Report.*